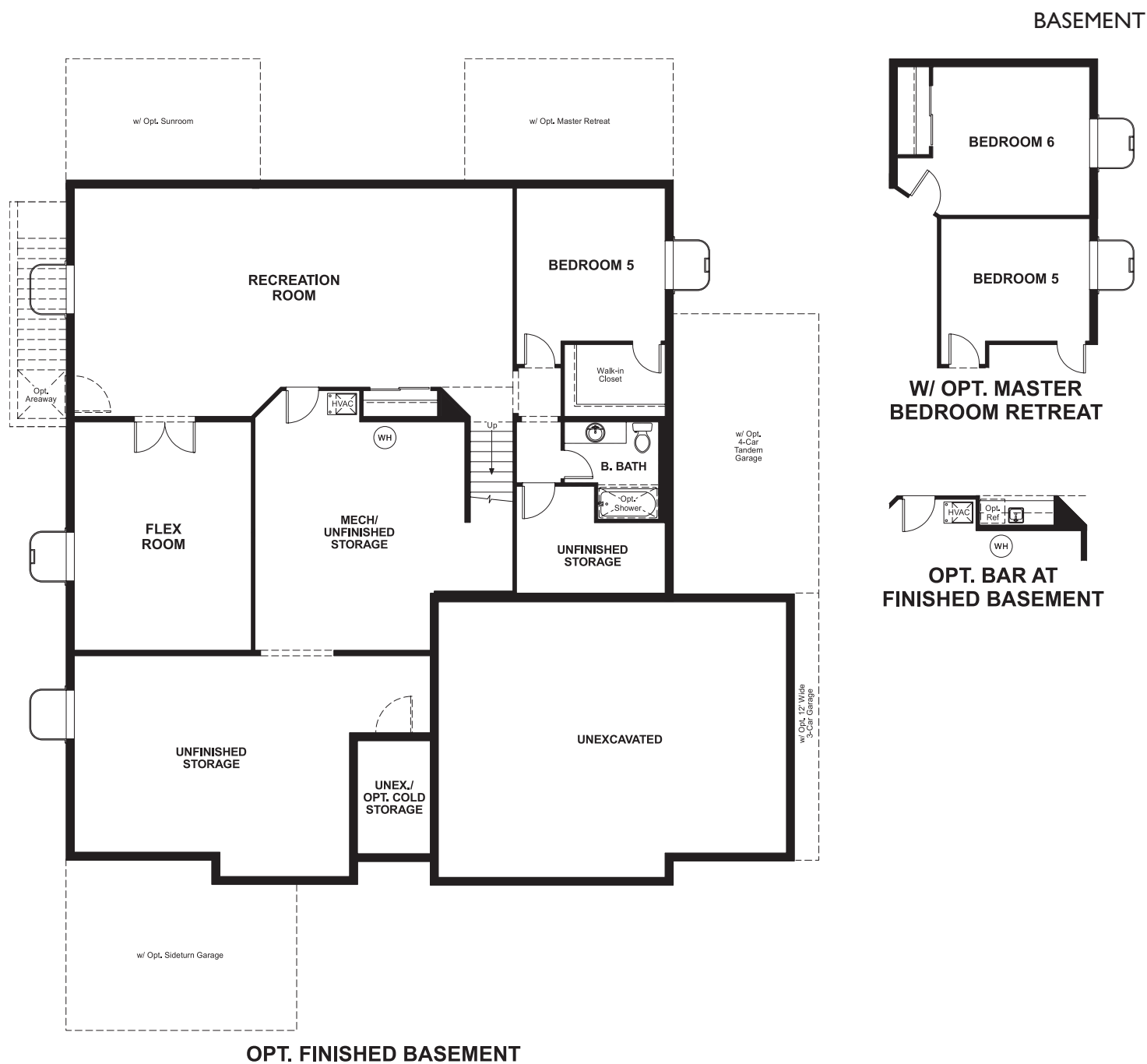


# THE DANIEL II

Approx. Sq. Ft.: 4,530 • Finished Sq. Ft.: 2,330 • Unfinished Sq. Ft.: 2,200 ^^  
 1 story • 3-6 bedrooms • 3- to 5-car garage • Plan #U237



ELEVATION E

## ABOUT THE DANIEL II

The ranch-style Daniel II plan greets guests with a charming covered entry. Inside, you'll find a private study with double doors, a spacious great room with an optional fireplace and an optional gourmet kitchen, complete with walk-in pantry, center island and nook. An elegant master suite featuring an immense walk-in closet and attached bath is separated from two additional bedrooms for privacy. Personalization options include a sunroom, tech center, master retreat and 4-car tandem garage.



ELEVATION A



ELEVATION B



ELEVATION C



ELEVATION D

### COMMUNITY LOCATION:

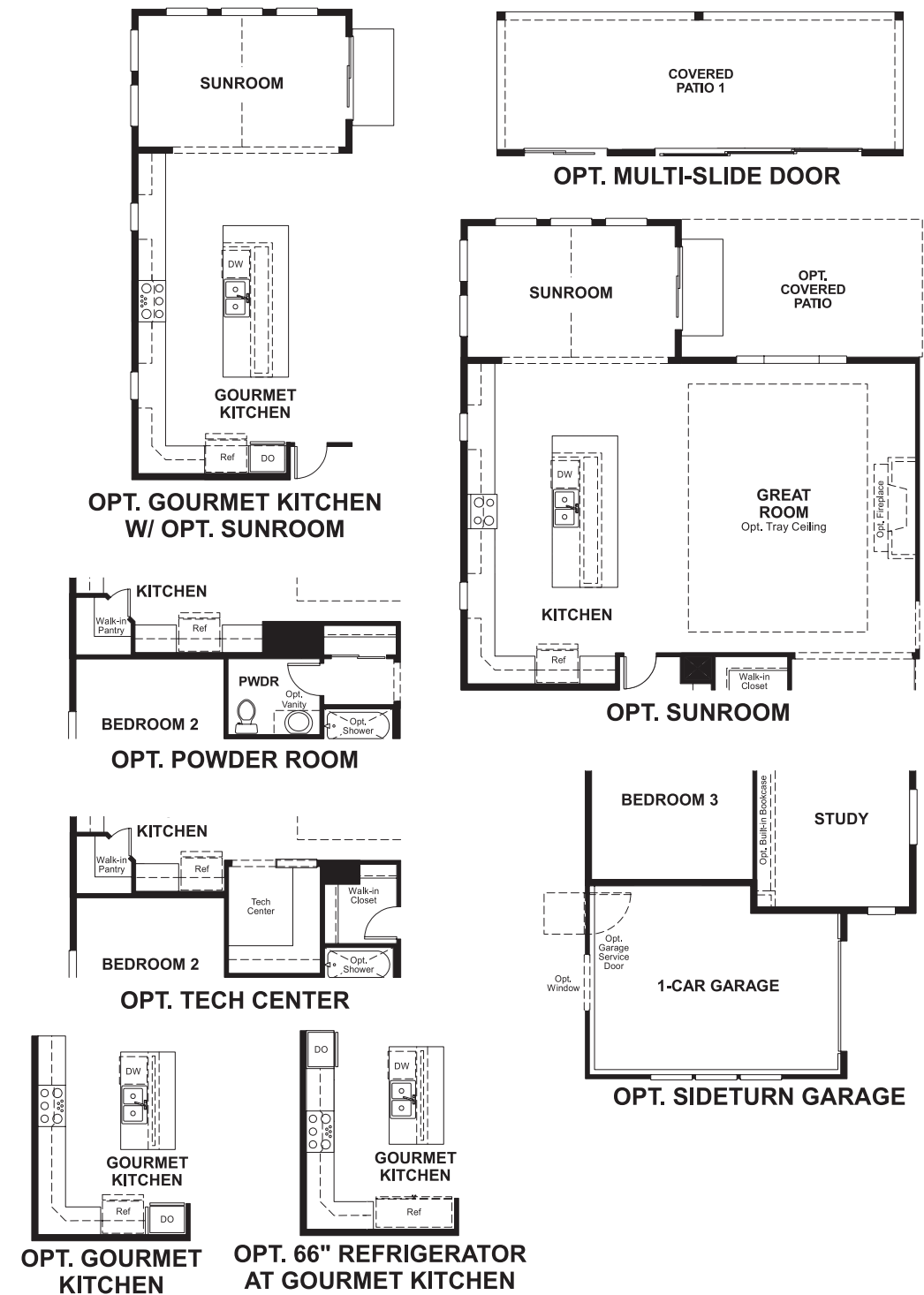
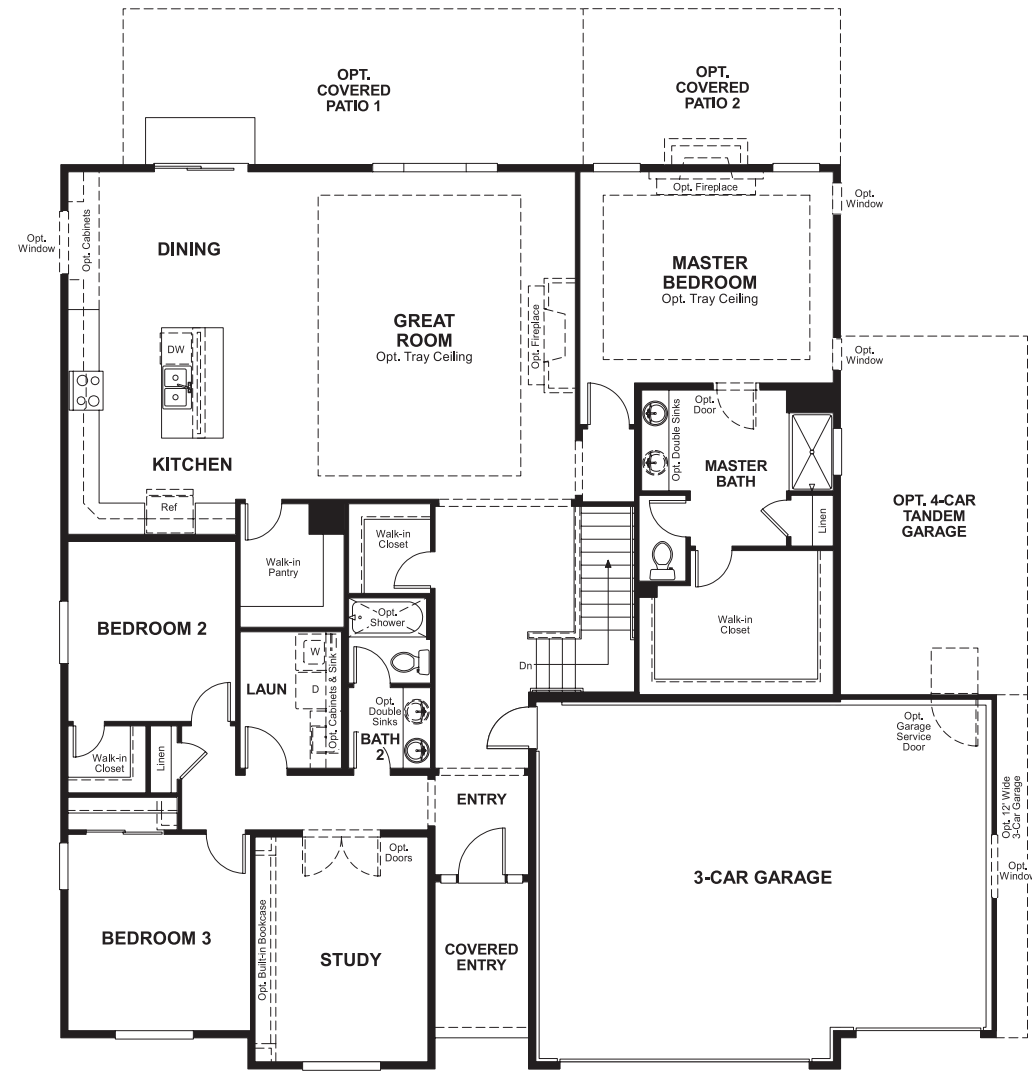
Mira Bella | 5866 West Suffolk View Lane | Herriman, UT 84096 | 801.446.3676

^^Square footage and plan dimensions are approximate and may show approximate total available footage with finished and unfinished footages listed separately. Unfinished areas may be available to be finished. Finished basement areas below-grade may vary in value from finished above-grade areas. Actual homes may vary from renderings, which may depict optional features, furniture layout and/or an elevation that may not be available on all homes which may change the footages and could change without notice. Drawings may not be to scale. Some structural options may not be available in combination. Ask a sales associate if you need assistance in personalizing your plan. Floor plans and renderings are conceptual drawings and may vary from actual plans and homes as built. Options and features may not be available on all homes and are subject to change without notice. Actual homes may vary from photos and/or drawings which show upgraded landscaping and may not represent the lowest-priced homes in the community. Features may include optional upgrades and may not be available on all homes. Square footage and plan dimensions are approximate and may show approximate total available footage with finished and unfinished footages listed separately. Unfinished areas may be available to be finished. Actual homes may vary from renderings, which may depict optional features, furniture layout and/or an elevation that may not be available on all homes which may change the footages and could change without notice. Drawings may not be to scale. Some structural options may not be available in combination. Ask a sales associate if you need assistance in personalizing your plan. Prices, specifications and availability subject to change without notice. ©2019 Richmond American Homes, Richmond American Homes of Utah, Inc. (866-400-4131). 5/30/2019



MAIN FLOOR

MAIN FLOOR OPTIONS



^^Square footage and plan dimensions are approximate and may show approximate total available footage with finished and unfinished footages listed separately. Unfinished areas may be available to be finished. Finished basement areas below-grade may vary in value from finished above-grade areas. Actual homes may vary from renderings, which may depict optional features, furniture layout and/or an elevation that may not be available on all homes which may change the footages and could change without notice. Drawings may not be to scale. Some structural options may not be available in combination. Ask a sales associate if you need assistance in personalizing your plan. Floor plans and renderings are conceptual drawings and may vary from actual plans and homes as built. Options and features may not be available on all homes and are subject to change without notice. Actual homes may vary from photos and/or drawings which show upgraded landscaping and may not represent the lowest-priced homes in the community. Features may include optional upgrades and may not be available on all homes. Square footage and plan dimensions are approximate and may show approximate total available footage with finished and unfinished footages listed separately. Unfinished areas may be available to be finished. Actual homes may vary from renderings, which may depict optional features, furniture layout and/or an elevation that may not be available on all homes which may change the footages and could change without notice. Drawings may not be to scale. Some structural options may not be available in combination. Ask a sales associate if you need assistance in personalizing your plan. Prices, specifications and availability subject to change without notice. ©2019 Richmond American Homes, Richmond American Homes of Utah, Inc. (866-400-4131). 5/30/2019

^^Square footage and plan dimensions are approximate and may show approximate total available footage with finished and unfinished footages listed separately. Unfinished areas may be available to be finished. Finished basement areas below-grade may vary in value from finished above-grade areas. Actual homes may vary from renderings, which may depict optional features, furniture layout and/or an elevation that may not be available on all homes which may change the footages and could change without notice. Drawings may not be to scale. Some structural options may not be available in combination. Ask a sales associate if you need assistance in personalizing your plan. Floor plans and renderings are conceptual drawings and may vary from actual plans and homes as built. Options and features may not be available on all homes and are subject to change without notice. Actual homes may vary from photos and/or drawings which show upgraded landscaping and may not represent the lowest-priced homes in the community. Features may include optional upgrades and may not be available on all homes. Square footage and plan dimensions are approximate and may show approximate total available footage with finished and unfinished footages listed separately. Unfinished areas may be available to be finished. Actual homes may vary from renderings, which may depict optional features, furniture layout and/or an elevation that may not be available on all homes which may change the footages and could change without notice. Drawings may not be to scale. Some structural options may not be available in combination. Ask a sales associate if you need assistance in personalizing your plan. Prices, specifications and availability subject to change without notice. ©2019 Richmond American Homes, Richmond American Homes of Utah, Inc. (866-400-4131). 5/30/2019