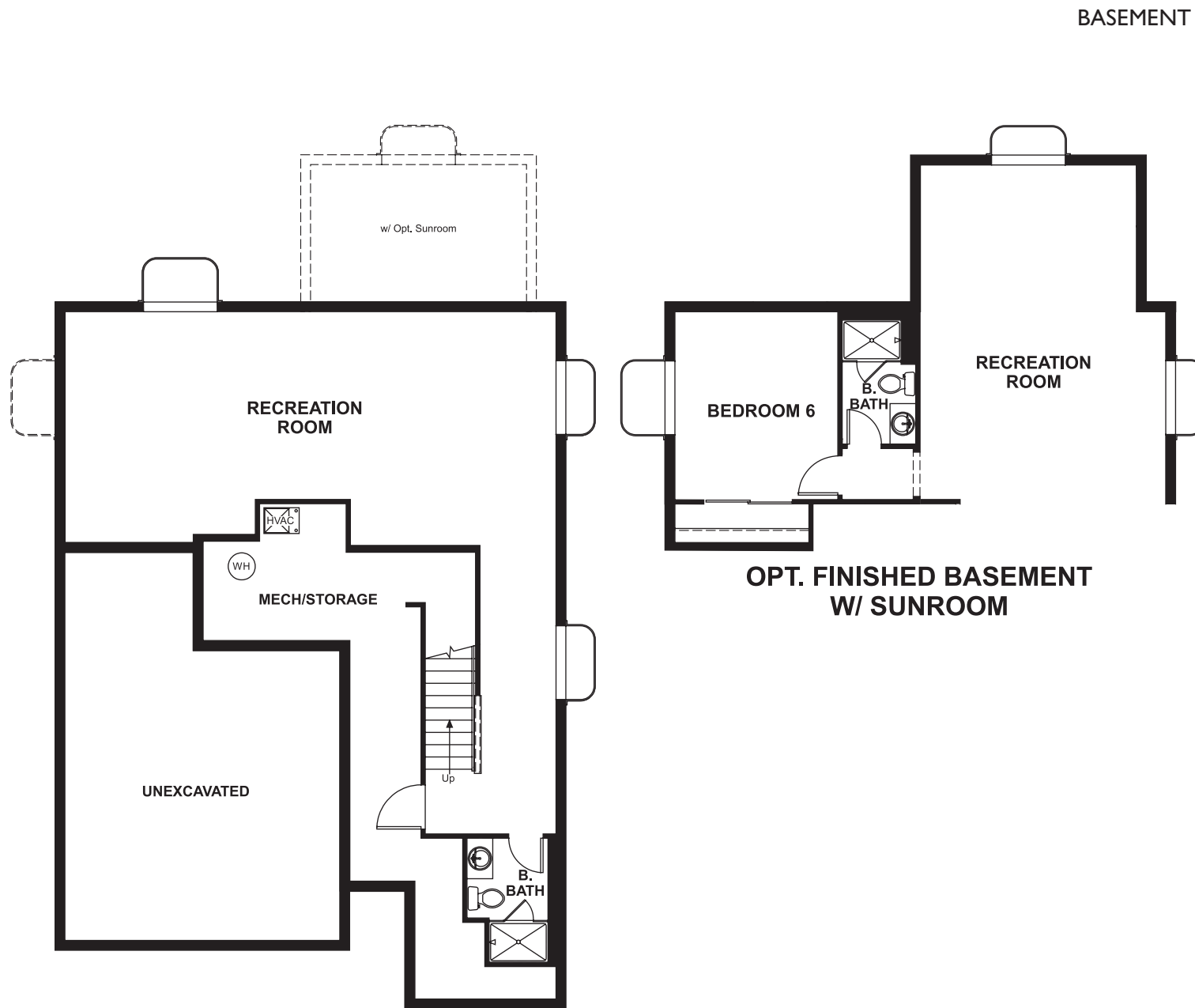


THE FLEMING

Approx. 2,190 sq. ft. | 2 stories | 3-6 bedrooms | 2- to 3-car garage | Plan #D597



ELEVATION C

ABOUT THE FLEMING

The main floor of the Fleming plan was designed for entertaining, with open great and dining rooms and a spacious kitchen with a center island, walk-in pantry and optional gourmet features. You'll also appreciate the quiet study. Upstairs offers an inviting loft, which can be converted to an extra bedroom, and an elegant master suite. Customize this plan with options including a deluxe master bath, sunroom and finished basement.



ELEVATION A



ELEVATION B

COMMUNITY LOCATION:

Cliffrose at Homestead at Crystal Valley | 5563 Cat Hollow Court | Castle Rock, CO 80104 | 303.663.2155

HOME GALLERY LOCATION:

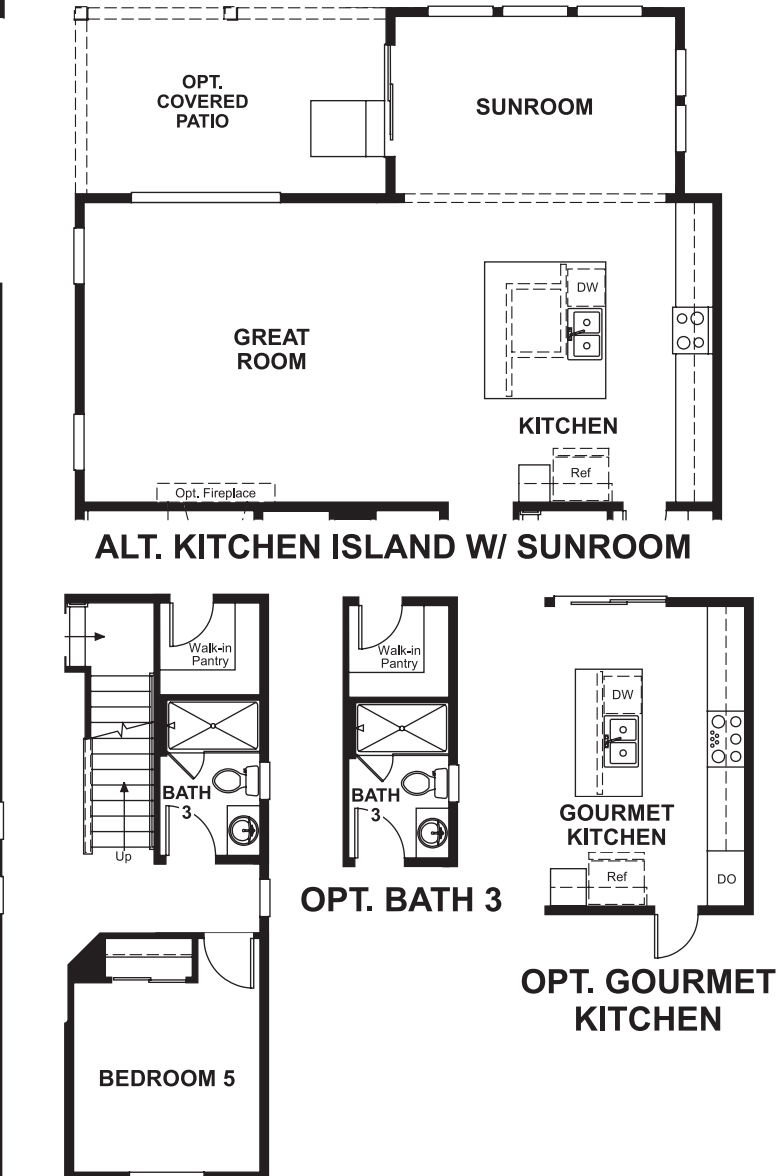
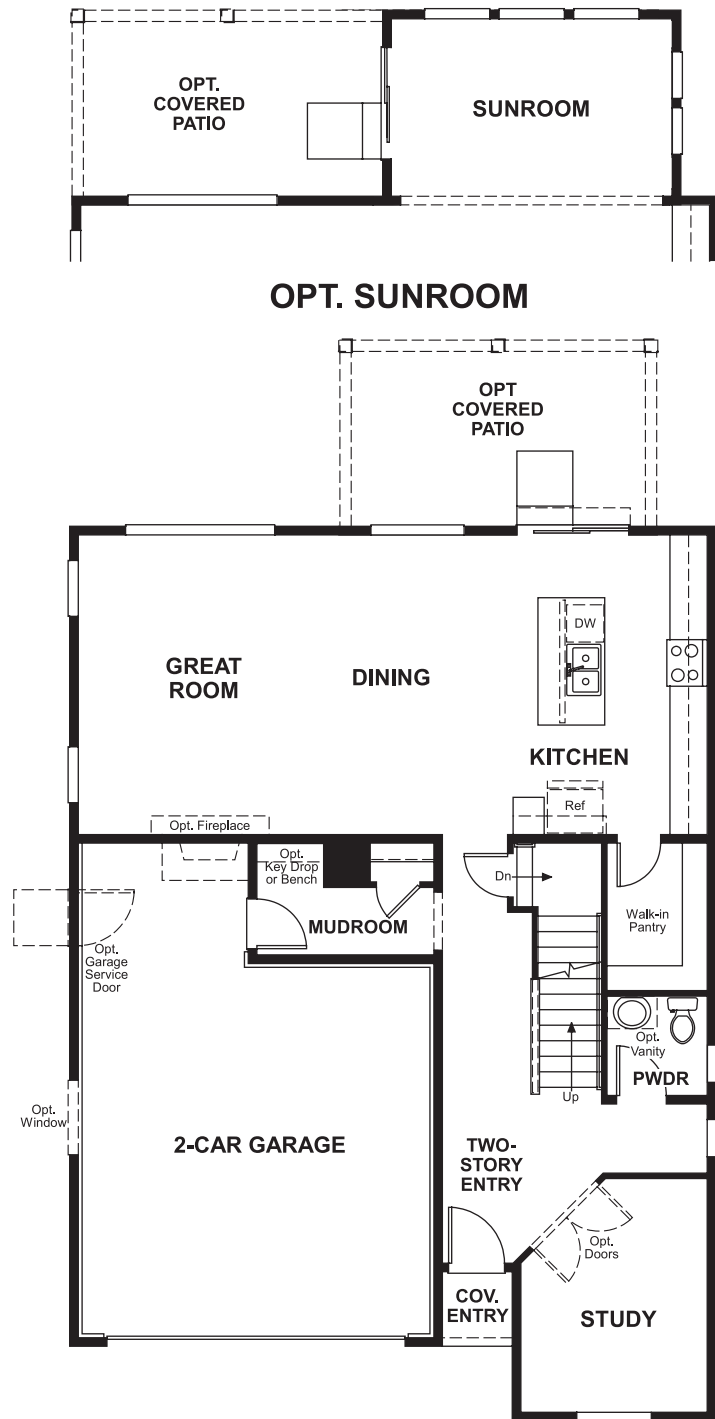
HG2 by Richmond American™ | 8000 East Belleview Avenue, Suite D-30 | Greenwood Village, CO 80111 | 888.402.4663



Floor plans and renderings are conceptual drawings and may vary from actual plans and homes as built. Options and features may not be available on all homes and are subject to change without notice. Actual homes may vary from photos and/or drawings which show upgraded landscaping and may not represent the lowest-priced homes in the community. Features may include optional upgrades and may not be available on all homes. Square footage numbers are approximate and are subject to change without notice. Prices, specifications and availability subject to change without notice. ©2020 Richmond American Homes, Richmond American Homes of Colorado, Inc. 4/16/2020

MAIN FLOOR

SECOND FLOOR



OPT. BEDROOM 5/
BATH 3



OPT. DELUXE
MASTER BATH

BEDROOM 4
OPT. BEDROOM 4



Floor plans and renderings are conceptual drawings and may vary from actual plans and homes as built. Options and features may not be available on all homes and are subject to change without notice. Actual homes may vary from photos and/or drawings which show upgraded landscaping and may not represent the lowest-priced homes in the community. Features may include optional upgrades and may not be available on all homes. Square footage numbers are approximate and are subject to change without notice. Prices, specifications and availability subject to change without notice. ©2020 Richmond American Homes, Richmond American Homes of Colorado, Inc. 4/16/2020

Floor plans and renderings are conceptual drawings and may vary from actual plans and homes as built. Options and features may not be available on all homes and are subject to change without notice. Actual homes may vary from photos and/or drawings which show upgraded landscaping and may not represent the lowest-priced homes in the community. Features may include optional upgrades and may not be available on all homes. Square footage numbers are approximate and are subject to change without notice. Prices, specifications and availability subject to change without notice. ©2020 Richmond American Homes, Richmond American Homes of Colorado, Inc. 4/16/2020