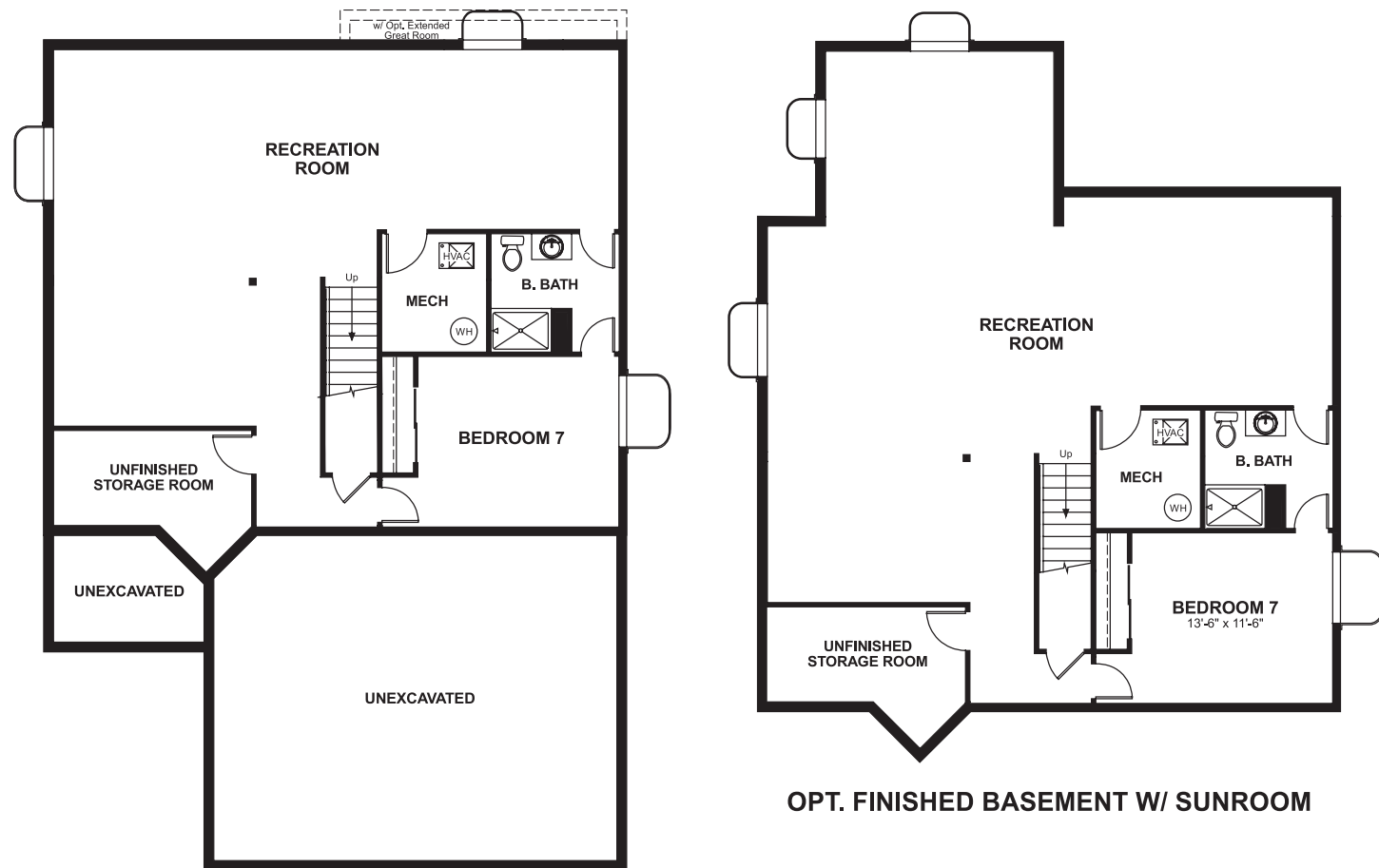


THE SETH

Approx. 3,000 sq. ft. | 2 stories | 4-7 bedrooms | 3-car garage | Plan #D29A

BASEMENT



OPT. FINISHED BASEMENT

OPT. FINISHED BASEMENT W/ SUNROOM



ELEVATION F

ABOUT THE SETH

The spacious Seth plan offers a kitchen with walk-in pantry and nook, which opens into the great room. A formal dining room, powder room and study with walk-in closet complete the main floor. Upstairs, you'll find a loft, three inviting bedrooms, a full bath, a convenient laundry and a luxurious master suite with two walk-in closets and a private bath.

COMMUNITY LOCATION:

Willow Neighborhood at Copperleaf | 4573 South Valdai Circle | Centennial, CO 80015 | 720.758.8915

HOME GALLERY LOCATION:

Denver Metro Home Gallery™ | 8000 East Belleview Avenue, Suite C-12 | Greenwood Village, CO 80111 | 888.402.4663



Floor plans and renderings are conceptual drawings and may vary from actual plans and homes as built. Options and features may not be available on all homes and are subject to change without notice. Actual homes may vary from photos and/or drawings which show upgraded landscaping and may not represent the lowest-priced homes in the community. Features may include optional upgrades and may not be available on all homes. Square footage numbers are approximate and are subject to change without notice. Prices, specifications and availability subject to change without notice. ©2020 Richmond American Homes, Richmond American Homes of Colorado, Inc. 2/17/2020



ELEVATION A



ELEVATION B



ELEVATION C



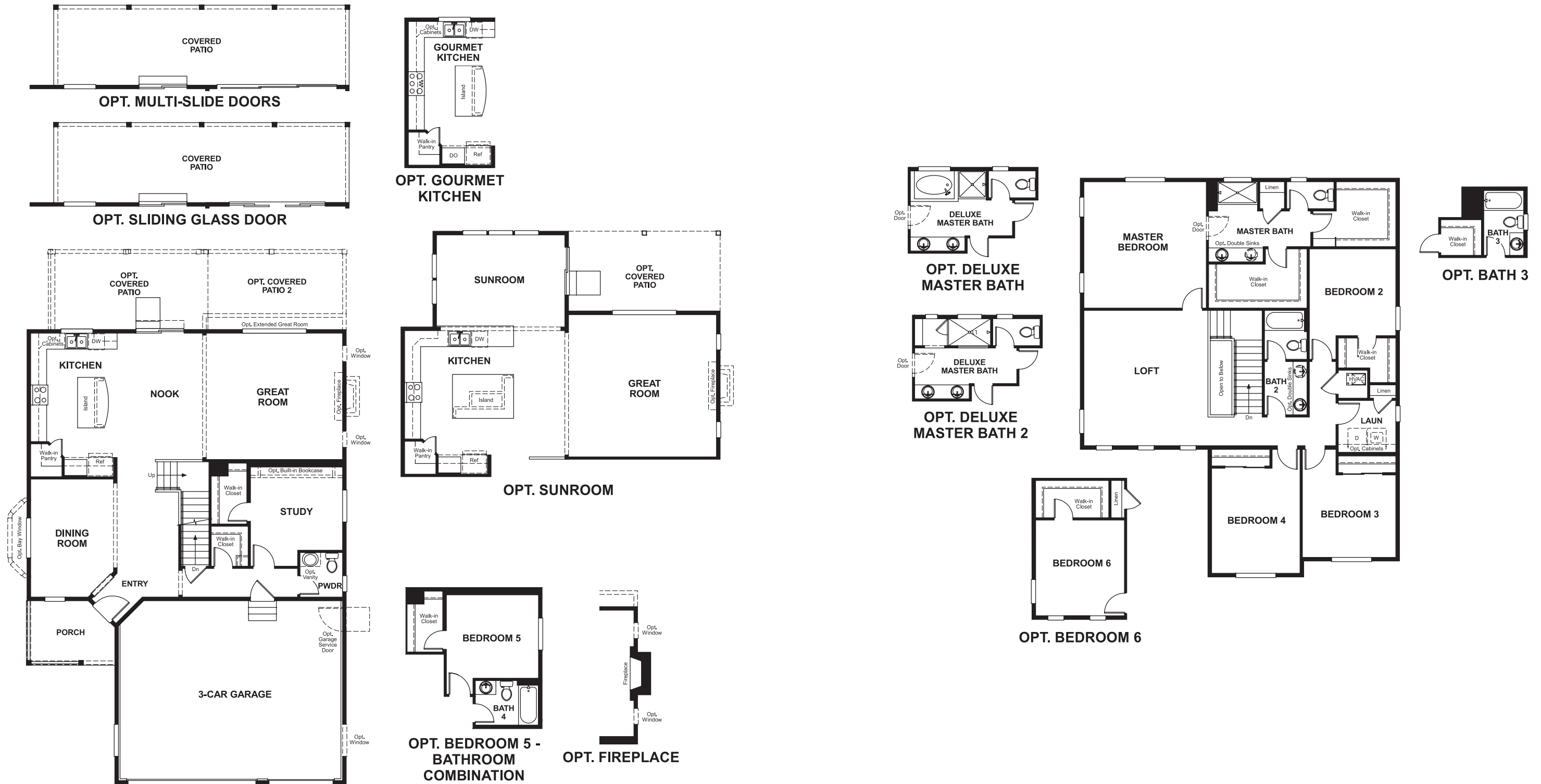
ELEVATION D



ELEVATION E

MAIN FLOOR

SECOND FLOOR



Floor plans and renderings are conceptual drawings and may vary from actual plans and homes as built. Options and features may not be available on all homes and are subject to change without notice. Actual homes may vary from photos and/or drawings which show upgraded landscaping and may not represent the lowest-priced homes in the community. Features may include optional upgrades and may not be available on all homes. Square footage numbers are approximate and are subject to change without notice. Prices, specifications and availability subject to change without notice. ©2020 Richmond American Homes, Richmond American Homes of Colorado, Inc. 2/17/2020

Floor plans and renderings are conceptual drawings and may vary from actual plans and homes as built. Options and features may not be available on all homes and are subject to change without notice. Actual homes may vary from photos and/or drawings which show upgraded landscaping and may not represent the lowest-priced homes in the community. Features may include optional upgrades and may not be available on all homes. Square footage numbers are approximate and are subject to change without notice. Prices, specifications and availability subject to change without notice. ©2020 Richmond American Homes, Richmond American Homes of Colorado, Inc. 2/17/2020