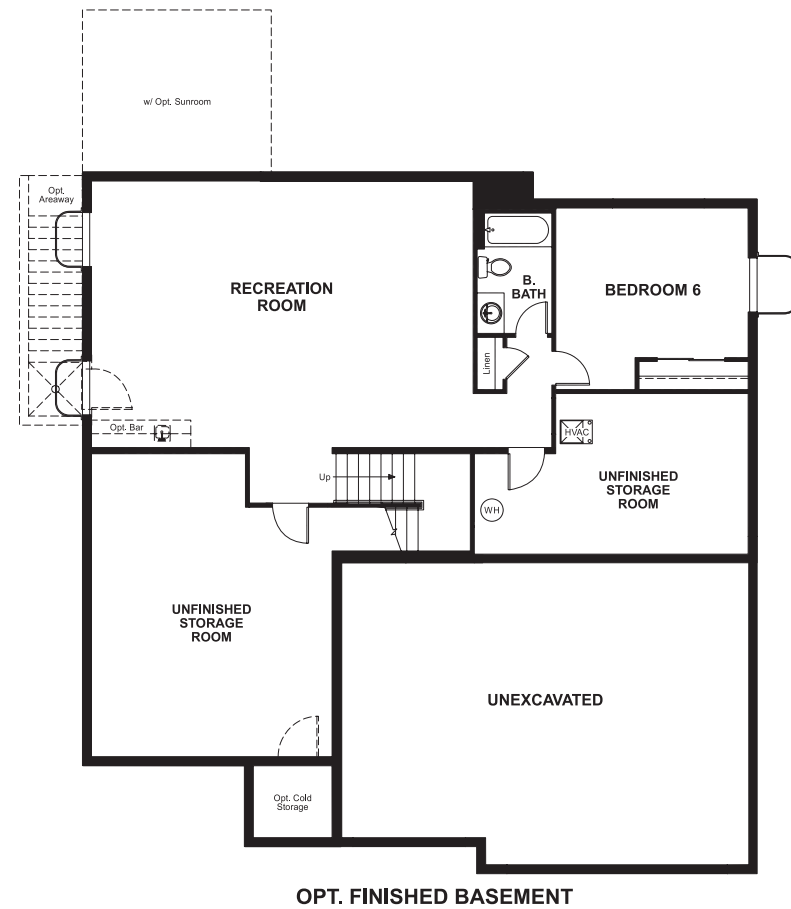


**BASEMENT**



ELEVATION E

**ABOUT THE DILLON**

The Dillon plan greets guests with a dramatic two-story entry, and continues to impress with an airy great room and a formal dining room with a butler's pantry leading to a kitchen with a center island and nook. You'll also appreciate a quiet study and a convenient mudroom off the 3-car garage. Upstairs, enjoy four bedrooms, including an elegant master suite with an oversized walk-in closet. Personalization options include a loft, an extra bedroom in lieu of the study, a finished basement and a covered patio.

**COMMUNITY LOCATION:**

Mira Bella | 5866 West Suffolk View Lane | Herriman, UT 84096 | 801.446.3676



ELEVATION A



ELEVATION B



ELEVATION C



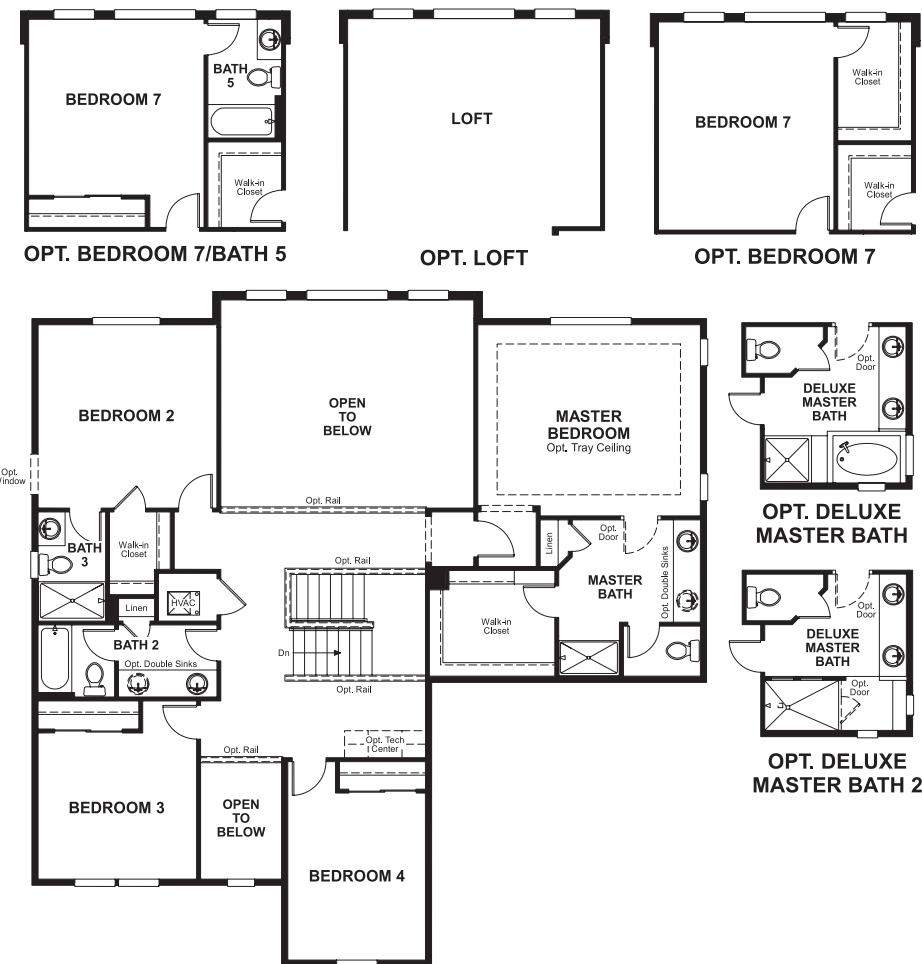
ELEVATION D

^^Square footage and plan dimensions are approximate and may show approximate total available footage with finished and unfinished footages listed separately. Unfinished areas may be available to be finished. Finished basement areas below-grade may vary in value from finished above-grade areas. Actual homes may vary from renderings, which may depict optional features, furniture layout and/or an elevation that may not be available on all homes which may change the footages and could change without notice. Drawings may not be to scale. Some structural options may not be available in combination. Ask a sales associate if you need assistance in personalizing your plan. Floor plans and renderings are conceptual drawings and may vary from actual plans and homes as built. Options and features may not be available on all homes and are subject to change without notice. Actual homes may vary from photos and/or drawings which show upgraded landscaping and may not represent the lowest-priced homes in the community. Features may include optional upgrades and may not be available on all homes. Square footage and plan dimensions are approximate and may show approximate total available footage with finished and unfinished footages listed separately. Unfinished areas may be available to be finished. Actual homes may vary from renderings, which may depict optional features, furniture layout and/or an elevation that may not be available on all homes which may change the footages and could change without notice. Drawings may not be to scale. Some structural options may not be available in combination. Ask a sales associate if you need assistance in personalizing your plan. Prices, specifications and availability subject to change without notice. ©2019 Richmond American Homes, Richmond American Homes of Utah, Inc. (866-400-4131). 6/14/2019



MAIN FLOOR

SECOND FLOOR



OPT. 66" REFRIGERATOR AT OPT. SUNROOM

OPT. GOURMET KITCHEN

OPT. BEDROOM 5/ BATH 4

OPT. BEDROOM 7/BATH 5

OPT. LOFT

OPT. BEDROOM 7

OPT. DELUXE MASTER BATH

DELUXE MASTER BATH

OPT. DELUXE MASTER BATH 2

^^Square footage and plan dimensions are approximate and may show approximate total available footage with finished and unfinished footages listed separately. Unfinished areas may be available to be finished. Finished basement areas below-grade may vary in value from finished above-grade areas. Actual homes may vary from renderings, which may depict optional features, furniture layout and/or an elevation that may not be available on all homes which may change the footages and could change without notice. Drawings may not be to scale. Some structural options may not be available in combination. Ask a sales associate if you need assistance in personalizing your plan. Floor plans and renderings are conceptual drawings and may vary from actual plans and homes as built. Options and features may not be available on all homes and are subject to change without notice. Actual homes may vary from photos and/or drawings which show upgraded landscaping and may not represent the lowest-priced homes in the community. Features may include optional upgrades and may not be available on all homes. Square footage and plan dimensions are approximate and may show approximate total available footage with finished and unfinished footages listed separately. Unfinished areas may be available to be finished. Actual homes may vary from renderings, which may depict optional features, furniture layout and/or an elevation that may not be available on all homes which may change the footages and could change without notice. Drawings may not be to scale. Some structural options may not be available in combination. Ask a sales associate if you need assistance in personalizing your plan. Prices, specifications and availability subject to change without notice. ©2019 Richmond American Homes, Richmond American Homes of Utah, Inc. (866-400-4131). 6/14/2019

^^Square footage and plan dimensions are approximate and may show approximate total available footage with finished and unfinished footages listed separately. Unfinished areas may be available to be finished. Finished basement areas below-grade may vary in value from finished above-grade areas. Actual homes may vary from renderings, which may depict optional features, furniture layout and/or an elevation that may not be available on all homes which may change the footages and could change without notice. Drawings may not be to scale. Some structural options may not be available in combination. Ask a sales associate if you need assistance in personalizing your plan. Floor plans and renderings are conceptual drawings and may vary from actual plans and homes as built. Options and features may not be available on all homes and are subject to change without notice. Actual homes may vary from photos and/or drawings which show upgraded landscaping and may not represent the lowest-priced homes in the community. Features may include optional upgrades and may not be available on all homes. Square footage and plan dimensions are approximate and may show approximate total available footage with finished and unfinished footages listed separately. Unfinished areas may be available to be finished. Actual homes may vary from renderings, which may depict optional features, furniture layout and/or an elevation that may not be available on all homes which may change the footages and could change without notice. Drawings may not be to scale. Some structural options may not be available in combination. Ask a sales associate if you need assistance in personalizing your plan. Prices, specifications and availability subject to change without notice. ©2019 Richmond American Homes, Richmond American Homes of Utah, Inc. (866-400-4131). 6/14/2019