

THE ELBERT

Approx. 1,880 sq. ft. | 2 stories | 3-4 bedrooms | 2-car garage | Plan #L787



ELEVATION D

ABOUT THE ELBERT

The two-story Elbert floor plan is the perfect pick for buyers seeking versatile living space. The main floor offers an appealing open layout with a gourmet kitchen, a great room, a dining nook and a powder room. Upstairs, the master suite showcases an oversized walk-in closet and a private bath with dual sinks. A loft is adjacent; add room for relaxing by replacing it with a master retreat, or choose a fourth bedroom for additional sleeping space. Also includes a covered patio!

COMMUNITY LOCATION:

Skye Knoll at Summerlin | Charleston Boulevard and Sky Vista Drive | Las Vegas, NV 89138 | **702.638.4440**

*This information is presented for education purposes only. The HERS index for a confirmed rating will be determined by a third-party HERS rater based on data gathered from on-site observations and, if required, testing of rated features for a home as featured, optioned, located, oriented and/or built.

+Standard new home is based on the RESNET® Reference Home definition with a HERS® index of 100 (based on the 2006 International Energy Conservation Code).

++Typical resale home is based on the U.S. Department of Energy definition with a HERS® index of 130.

^RESNET® has developed the HERS® index to indicate the comparative efficiencies of homes. It is no guarantee that energy efficiencies will be achieved.

Floor plans and renderings are conceptual drawings and may vary from actual plans and homes as built. Options and features may not be available on all homes and are subject to change without notice. Actual homes may vary from photos and/or drawings which show upgraded landscaping and may not represent the lowest-priced homes in the community. Features may include optional upgrades and may not be available on all homes. Square footage numbers are approximate and are subject to change without notice. ©2019 Richmond American Homes. In Nevada, homes are offered by Richmond American Homes of Nevada, Inc. (Nevada Contractor License #0026417.) 7/6/2019



ELEVATION A

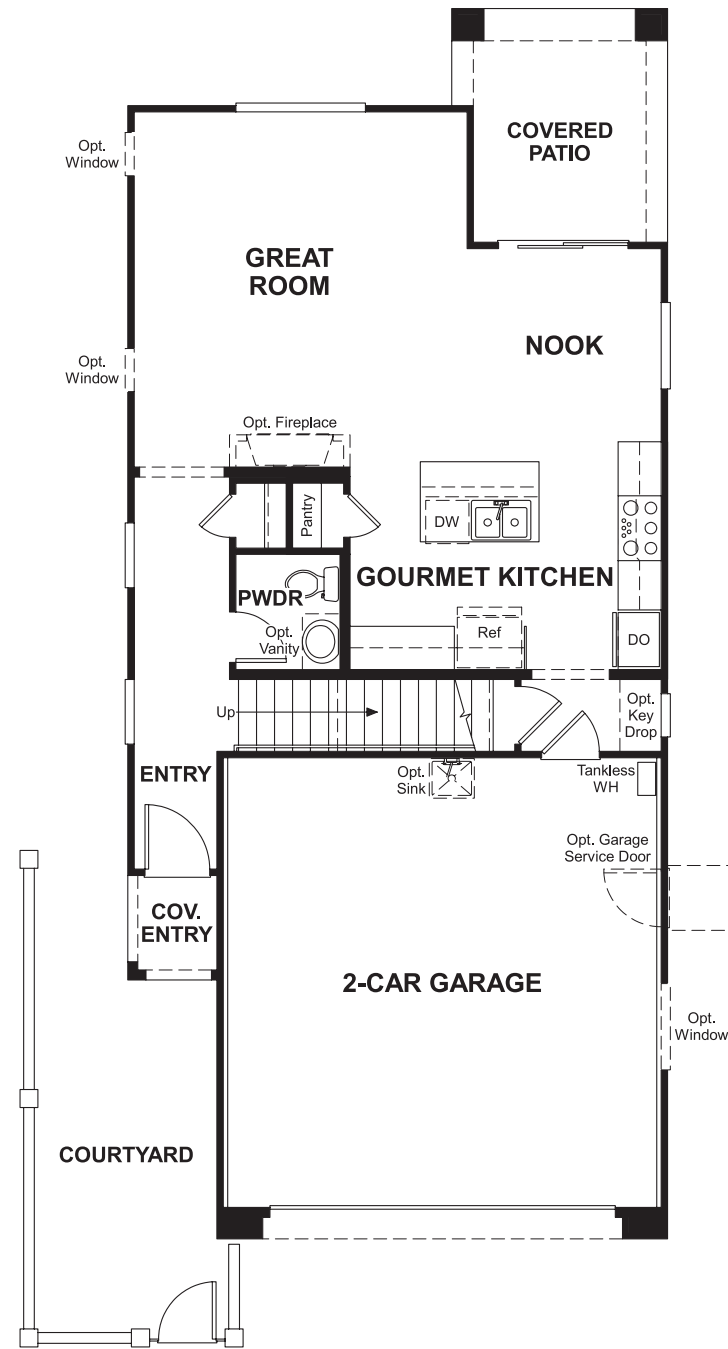


ELEVATION B

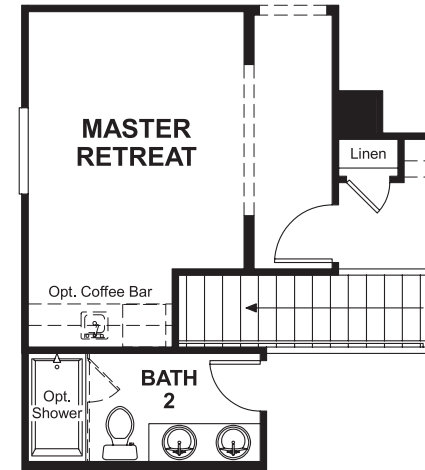


ELEVATION C

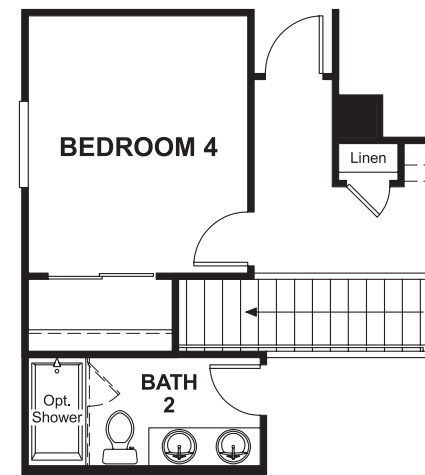
MAIN FLOOR



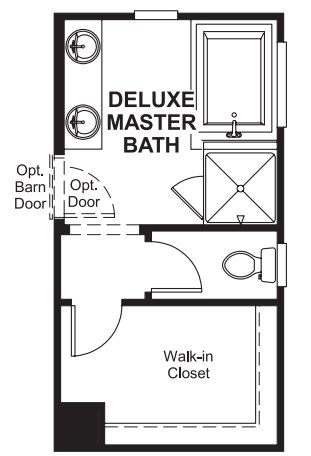
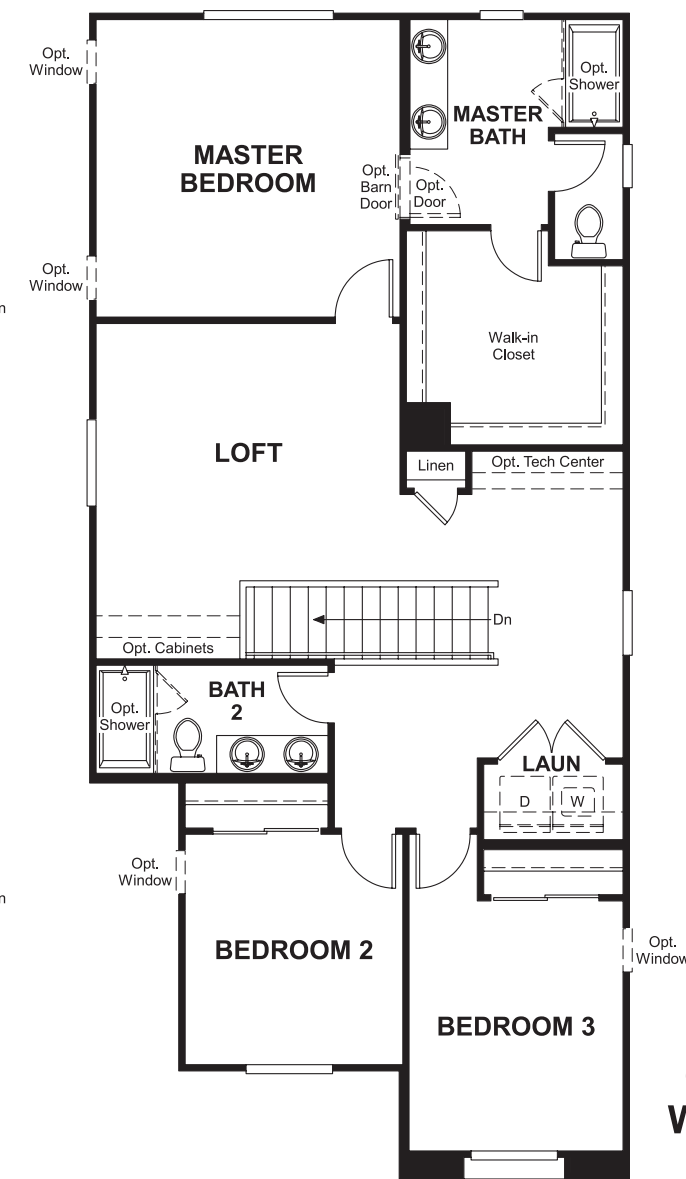
SECOND FLOOR



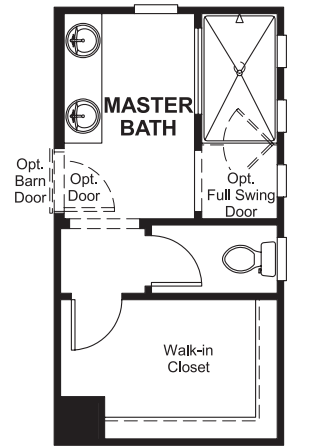
OPT. MASTER BEDROOM RETREAT



OPT. BEDROOM 4



OPT. DELUXE MASTER BATH



OPT. MASTER BATH W/ WALK-IN SHOWER

THIS PLAN'S PROJECTED **HERS® INDEX = TBD***
 Projected Rating Based on Plans – Field Confirmation required

How does this floor plan rate?
 Take a look: **100** = Standard new home+ **130** = Typical resale Home++
 The lower number, the better! Refer to the RESNET® HERS index brochure or go to www.RESNET.us and www.HERSindex.com

What's a HERS® Index? HERS stands for Home Energy Rating System, a system created by RESNET® to measure home energy efficiency. A Projected HERS index or rating is a computer simulation performed prior to construction by a third-party HERS rater using RESNET-accredited rating software, rated feature and specification data derived from home plans, features and specifications, and other data selected or assumed by the rater. The projected HERS index is approximate and is subject to change without notice. Actual results will vary.