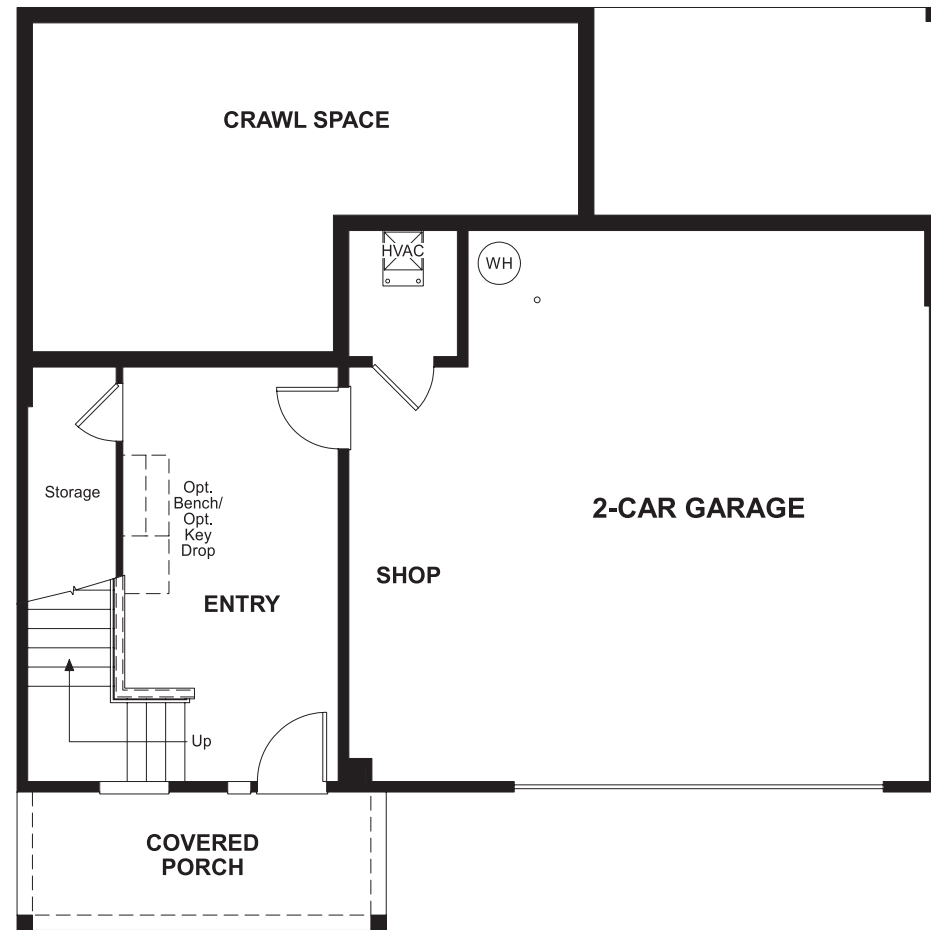


# THE SYBIL

Approx. 2,760 sq. ft. | 2 stories | 3-5 bedrooms | 2-car garage | Plan #G720

## BASEMENT



ELEVATION C

## ABOUT THE SYBIL

The main floor of the Sybil plan is ideal for entertaining, offering an expansive great room with an optional fireplace and an impressive kitchen featuring a center island, walk-in pantry, adjacent dining room and optional gourmet or chef's features. You'll also appreciate a convenient powder room, a private study and a relaxing covered patio. Upstairs, discover a laundry, a versatile loft and three generous bedrooms, including an elegant master suite with a private bath and oversized walk-in closet. Personalize this plan with a deluxe master bath and extra bedrooms in lieu of the study and loft.



ELEVATION A



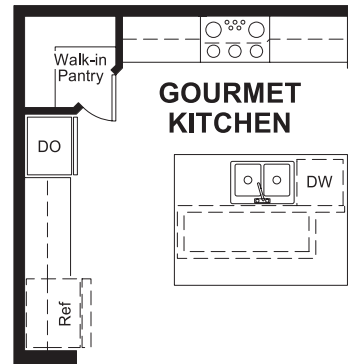
ELEVATION B



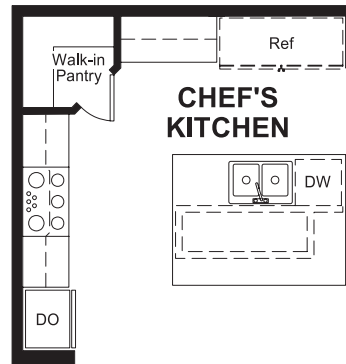
Floor plans and renderings are conceptual drawings and may vary from actual plans and homes as built. Options and features may not be available on all homes and are subject to change without notice. Actual homes may vary from photos and/or drawings which show upgraded landscaping and may not represent the lowest-priced homes in the community. Features may include optional upgrades and may not be available on all homes. Square footage numbers are approximate and are subject to change without notice. Prices, specifications and availability subject to change without notice. ©2019 Richmond American Homes, Richmond American Homes of Oregon, Inc., CCB #218193. 1/16/2019

MAIN FLOOR

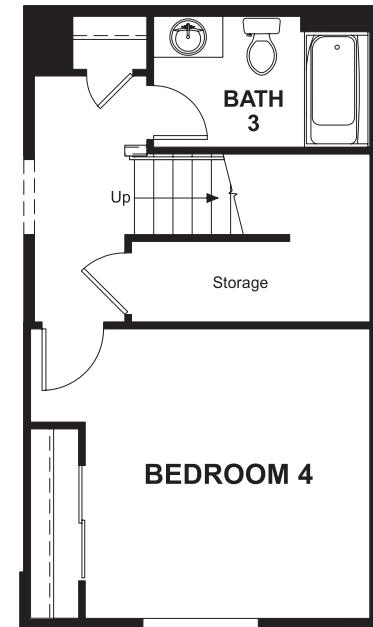
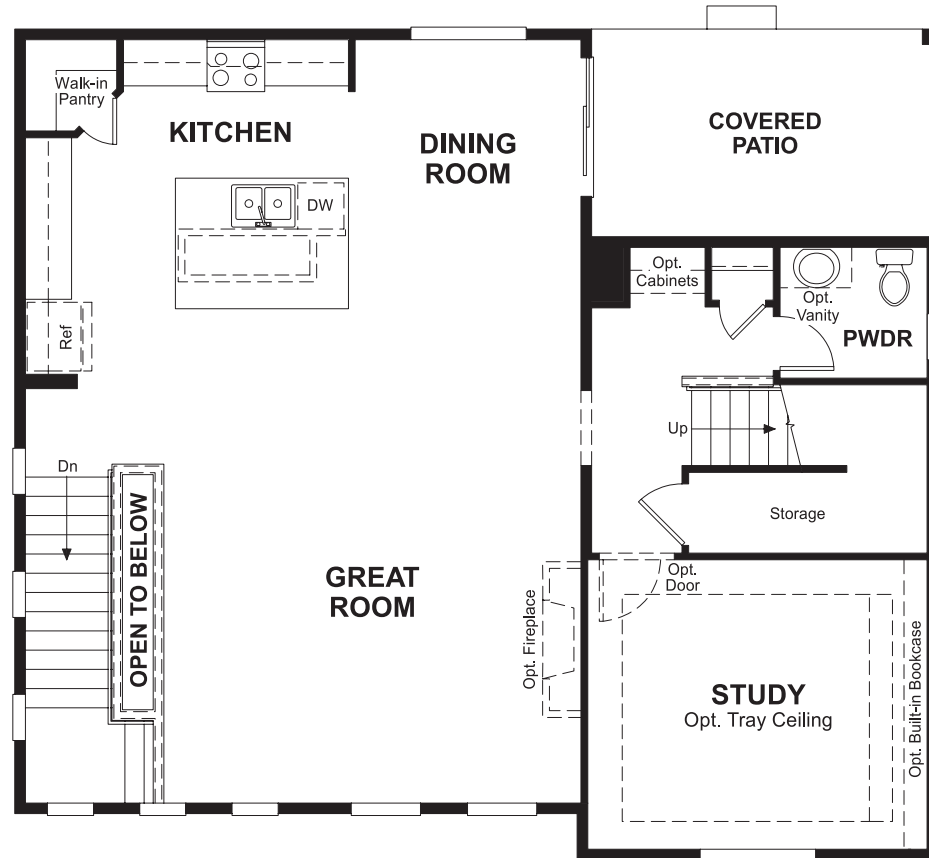
SECOND FLOOR



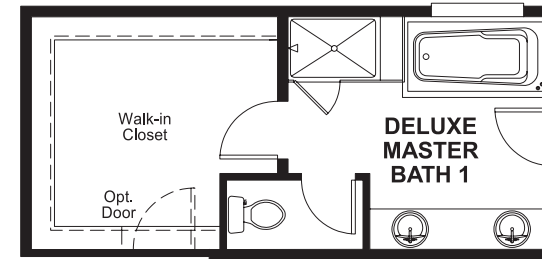
OPT. GOURMET KITCHEN



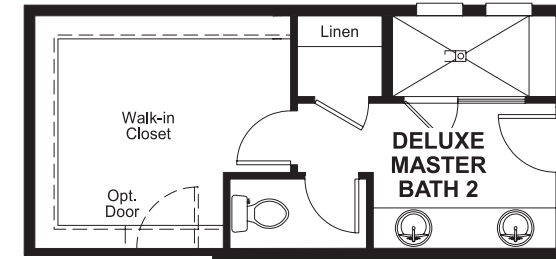
OPT. CHEF'S KITCHEN



OPT. BED 4/BATH 3



OPT. DELUXE MASTER BATH #1



OPT. DELUXE MASTER BATH #2



OPT. BED 5

Floor plans and renderings are conceptual drawings and may vary from actual plans and homes as built. Options and features may not be available on all homes and are subject to change without notice. Actual homes may vary from photos and/or drawings which show upgraded landscaping and may not represent the lowest-priced homes in the community. Features may include optional upgrades and may not be available on all homes. Square footage numbers are approximate and are subject to change without notice. Prices, specifications and availability subject to change without notice. ©2019 Richmond American Homes, Richmond American Homes of Oregon, Inc., CCB #218193. 1/16/2019

Floor plans and renderings are conceptual drawings and may vary from actual plans and homes as built. Options and features may not be available on all homes and are subject to change without notice. Actual homes may vary from photos and/or drawings which show upgraded landscaping and may not represent the lowest-priced homes in the community. Features may include optional upgrades and may not be available on all homes. Square footage numbers are approximate and are subject to change without notice. Prices, specifications and availability subject to change without notice. ©2019 Richmond American Homes, Richmond American Homes of Oregon, Inc., CCB #218193. 1/16/2019