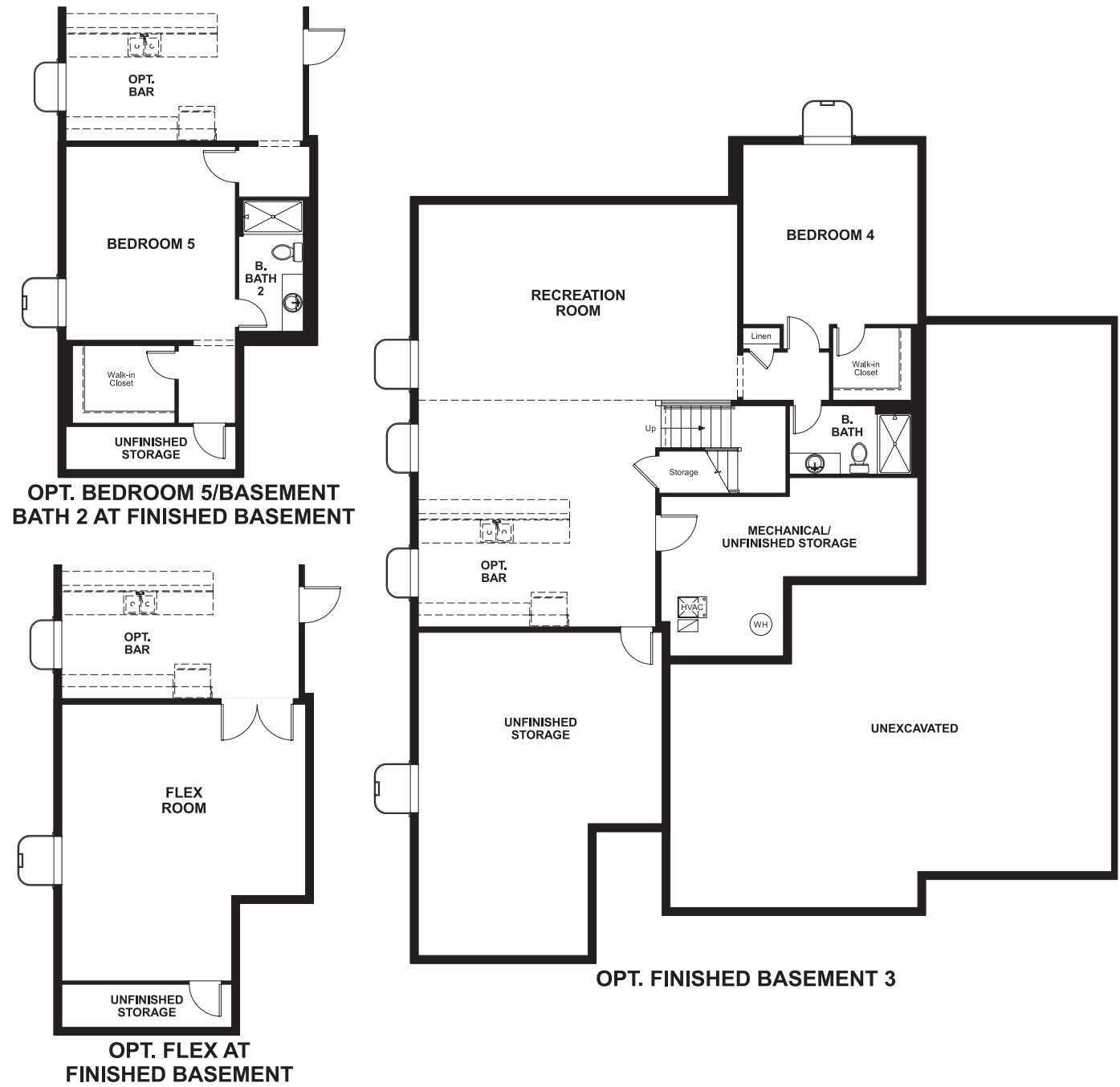


BASEMENT



ELEVATION C

ABOUT THE HAMPTON

A two-car garage, attached RV garage and charming covered entry give the ranch-style Hampton plan abundant curb appeal. Inside, you'll find a spacious great room and an impressive kitchen featuring a generous walk-in pantry and center island designed to seat six. An elegant master suite boasting an attached bath and expansive walk-in closet is separated from two additional bedrooms for privacy. A central laundry room and mudroom are also included. Personalize this plan with a deluxe master bath, covered patio and finished basement.



ELEVATION A



ELEVATION D



ELEVATION E

COMMUNITY LOCATION:

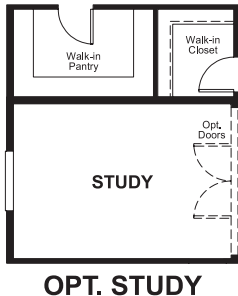
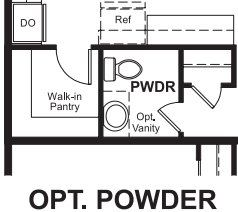
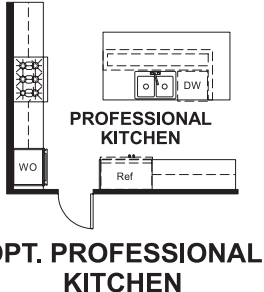
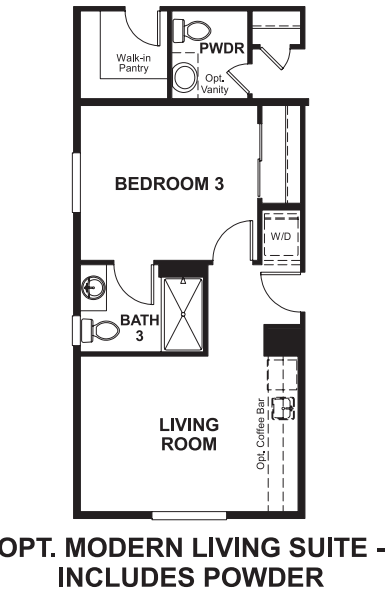
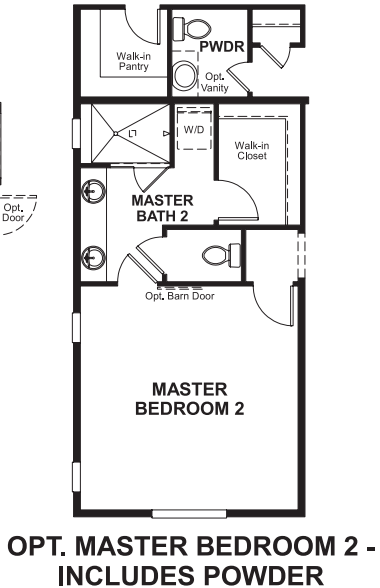
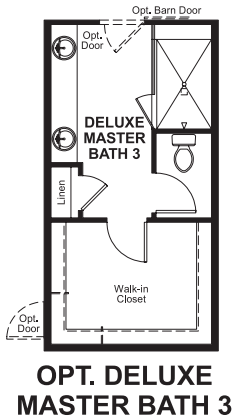
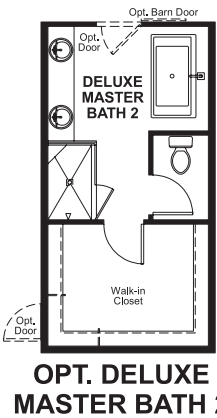
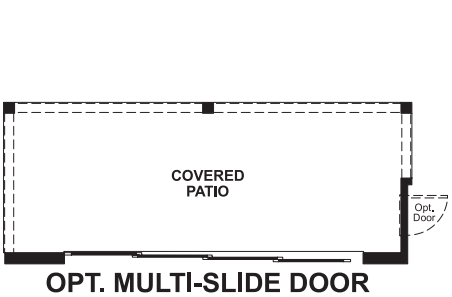
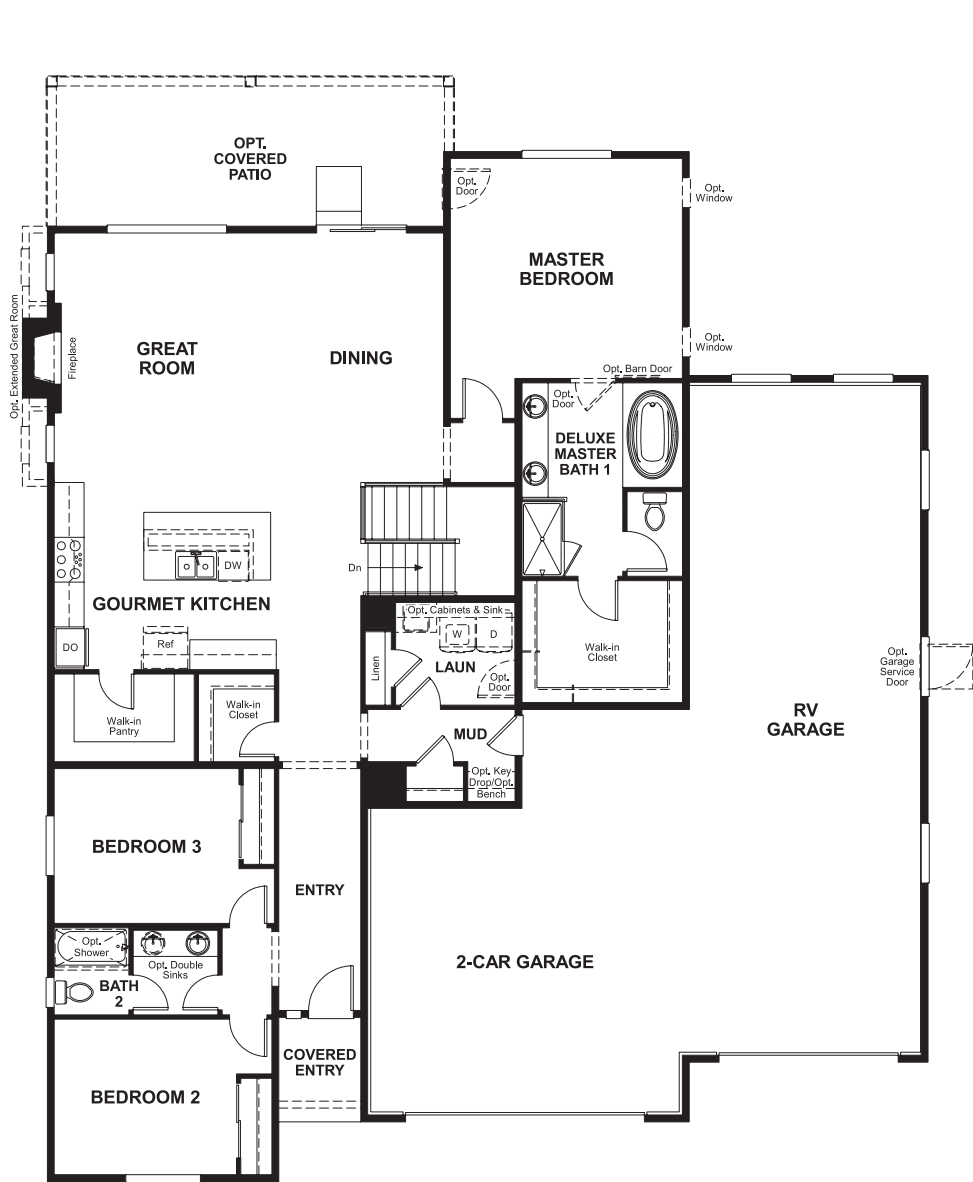
Blacktail at The Meadows | 1687 Gentle Rain Drive | Castle Rock, CO 80109 | 303.850.5750



Floor plans and renderings are conceptual drawings and may vary from actual plans and homes as built. Options and features may not be available on all homes and are subject to change without notice. Actual homes may vary from photos and/or drawings which show upgraded landscaping and may not represent the lowest-priced homes in the community. Features may include optional upgrades and may not be available on all homes. Square footage numbers are approximate and are subject to change without notice. Prices, specifications and availability subject to change without notice. ©2019 Richmond American Homes, Richmond American Homes of Colorado, Inc. 9/10/19

MAIN FLOOR

MAIN FLOOR OPTIONS



Floor plans and renderings are conceptual drawings and may vary from actual plans and homes as built. Options and features may not be available on all homes and are subject to change without notice. Actual homes may vary from photos and/or drawings which show upgraded landscaping and may not represent the lowest-priced homes in the community. Features may include optional upgrades and may not be available on all homes. Square footage numbers are approximate and are subject to change without notice. Prices, specifications and availability subject to change without notice. ©2019 Richmond American Homes, Richmond American Homes of Colorado, Inc. 9/10/19

Floor plans and renderings are conceptual drawings and may vary from actual plans and homes as built. Options and features may not be available on all homes and are subject to change without notice. Actual homes may vary from photos and/or drawings which show upgraded landscaping and may not represent the lowest-priced homes in the community. Features may include optional upgrades and may not be available on all homes. Square footage numbers are approximate and are subject to change without notice. Prices, specifications and availability subject to change without notice. ©2019 Richmond American Homes, Richmond American Homes of Colorado, Inc. 9/10/19