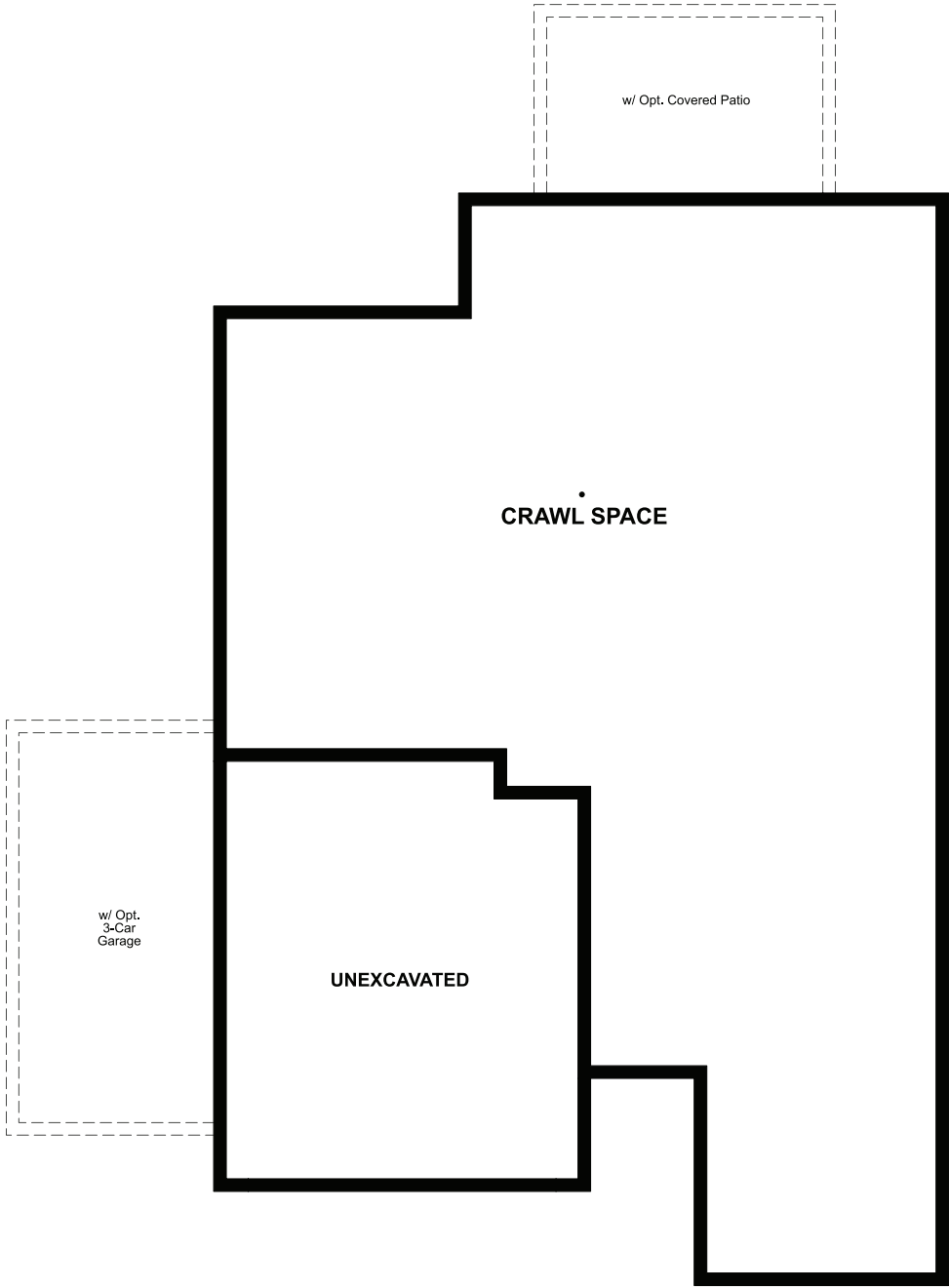


THE ONYX

Approx. 1,580 sq. ft. | 3 bed | 2 bath | 2- to 3-car garage | Plan #D902

CRAWL SPACE



ELEVATION C

ABOUT THE ONYX

Enjoy single-floor living in this inspired ranch floor plan! At the front of the home, you'll find two bedrooms flanking a full bath. Toward the back, there's a well-appointed kitchen nestled between an elegant dining room and generous great room. A tech center provides added convenience! The laundry is located near the owner's bedroom, which has a large walk-in closet and a private bath. Add a covered patio for outdoor entertaining.



ELEVATION A



ELEVATION B

COMMUNITY LOCATION:

Seasons at Prairie Center | 1805 Papuan Court | Brighton, CO 80601 | **303.850.5750**

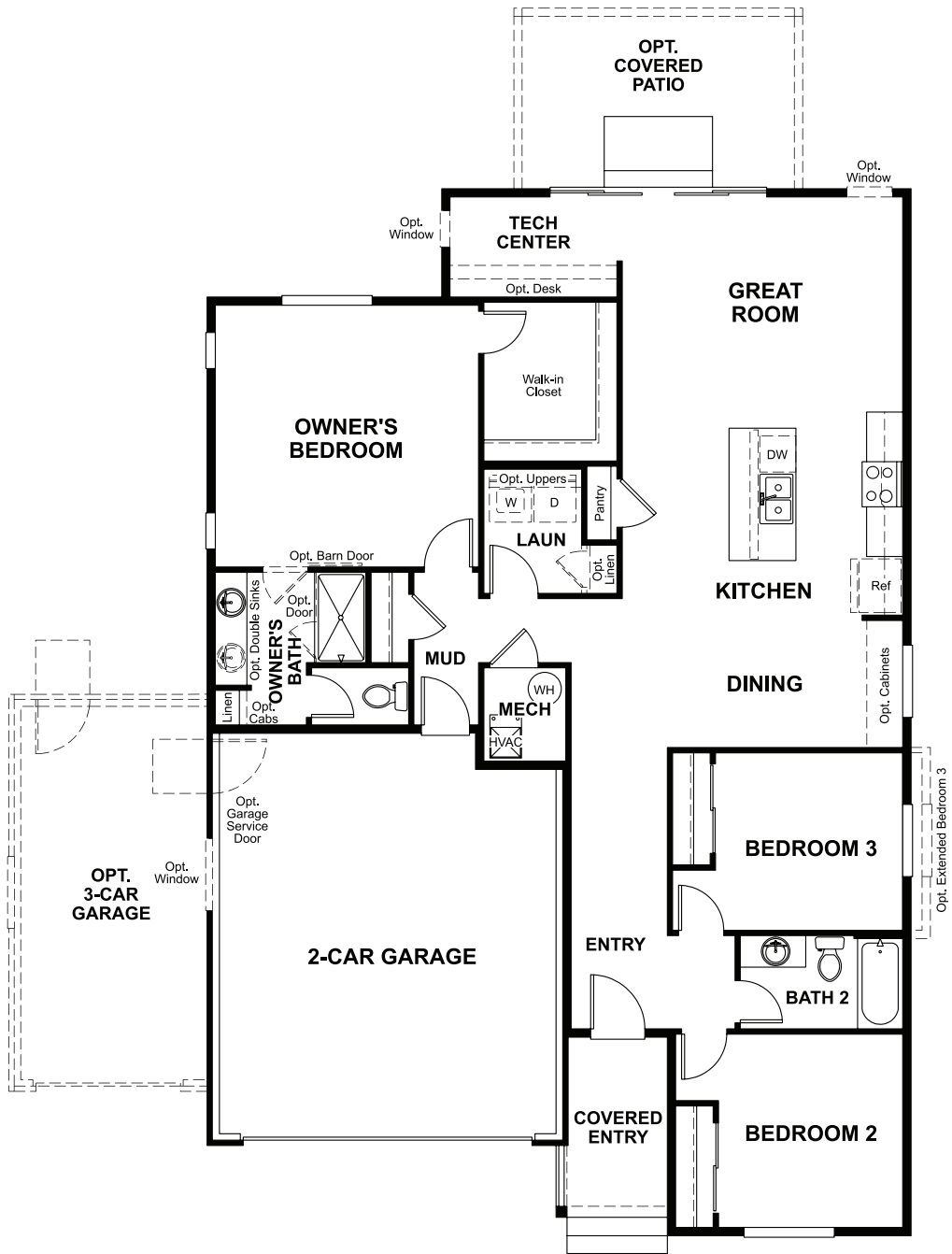
DESIGN CENTER LOCATION:

HG2 by Richmond American[™] | 8000 E. Bellevue Avenue, Suite D-30 | Greenwood Village, CO 80111 | **888.402.4663**



Floor plans and renderings are conceptual drawings and may vary from actual plans and homes as built. Options and features may not be available on all homes and are subject to change without notice. Actual homes may vary from photos and/or drawings which show upgraded landscaping and may not represent the lowest-priced homes in the community. Features may include optional upgrades and may not be available on all homes. Prices, specifications and availability are subject to change without notice. Square footage is approximate and subject to change without notice. ©2021 Richmond American Homes, Richmond American Homes of Colorado, Inc. 7/2/2021

MAIN FLOOR



MAIN-FLOOR OPTIONS

