

PRELIMINARY



ELEVATION C



ABOUT THE SETH

The Seth greets visitors with a charming front porch and an airy two-story entry. The main floor showcases a dining room and an open layout with a great room, a nook and a large kitchen with a center island and a walk-in pantry. You'll also find a study, powder room and a mudroom on this floor. The upstairs master suite offers two generous walk-in closets and a luxurious private bath with dual sinks and a separate shower and soaking tub. Personalize it with a walk-in shower or other deluxe features! Three additional bedrooms and a bath fill out the second floor, along with a loft space that can be built as a sixth bedroom. Enhance the outdoor space with a covered patio, or add a morning room off of the kitchen.



ELEVATION A



ELEVATION B

COMMUNITY LOCATION:

Fieldcress at Terramor | 24241 Flora Road | Corona, CA 92883 | **951.351.1112**

HOME GALLERY LOCATION:

Southern California Home Gallery™ | 5171 California Avenue, Suite 110 | Irvine, CA 92617 | **909.579.3288**

*This information is presented for education purposes only. The HERS index for a confirmed rating will be determined by a third-party HERS rater based on data gathered from on-site observations and, if required, testing of rated features for a home as featured, optioned, located, oriented and/or built.

+Standard new home is based on the RESNET® Reference Home definition with a HERS® index of 100 (based on the 2006 International Energy Conservation Code).

++Typical resale home is based on the U.S. Department of Energy definition with a HERS® index of 130.

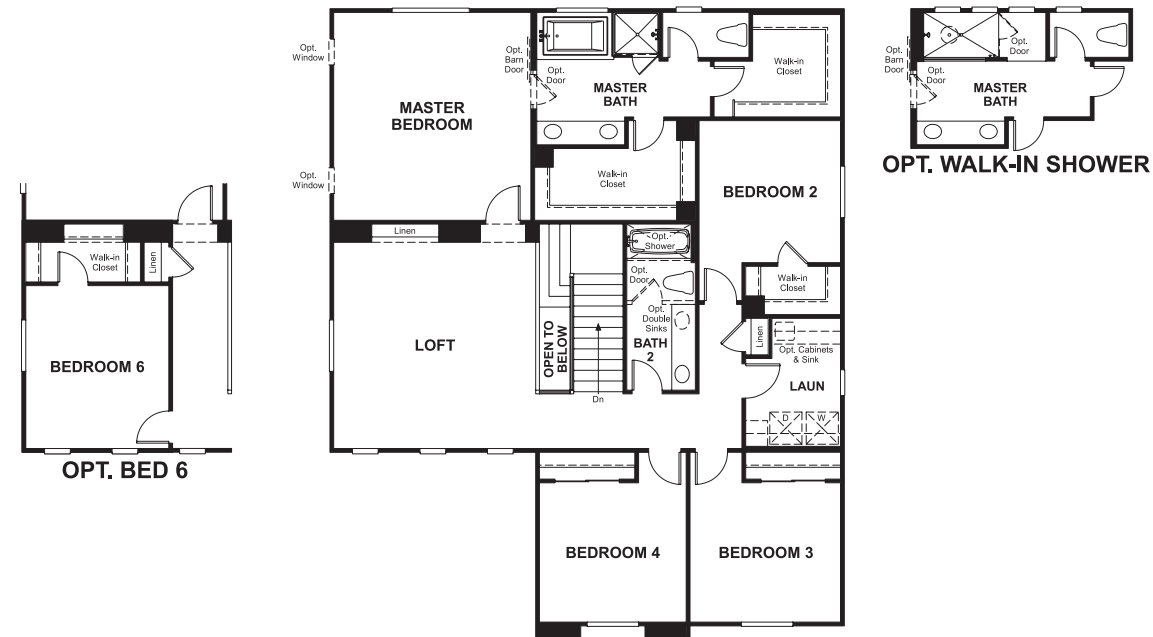
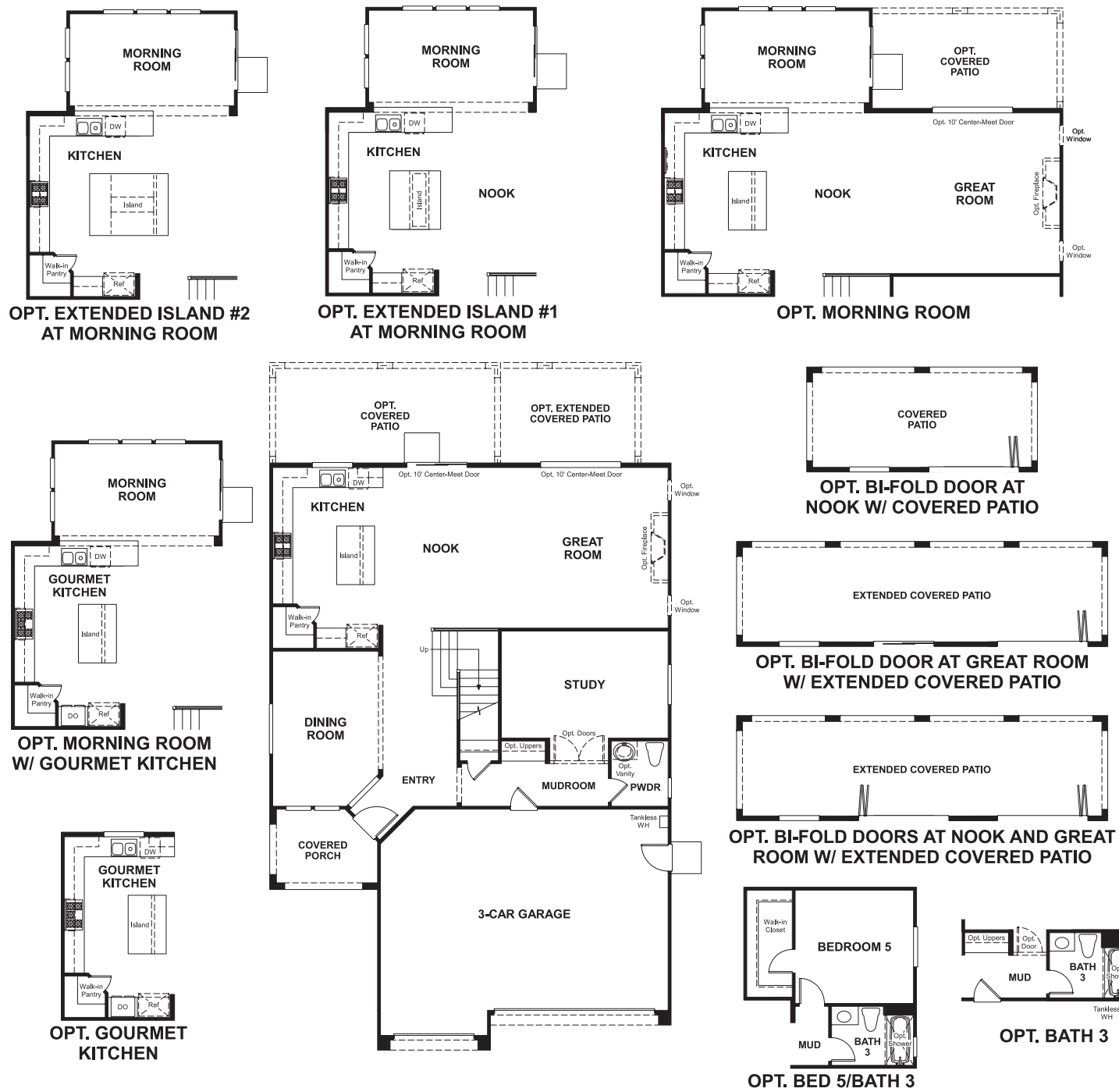
^RESNET® has developed the HERS® index to indicate the comparative efficiencies of homes. It is no guarantee that energy efficiencies will be achieved.

Floorplans and renderings are conceptual drawings and may vary from actual plans and homes as built. Options and features may not be available on all homes and are subject to change without notice. Actual homes may vary from photos and/or drawings which show upgraded landscaping and may not represent the lowest-priced homes in the community. Features may include optional upgrades and may not be available on all homes. Square footage numbers are approximate and are subject to change without notice. Prices, specifications and availability subject to change without notice. ©2020 Richmond American Homes, Richmond American Homes of Maryland, Inc., California Bureau of Real Estate – Real Estate Broker, Corporation License Number 01842595. 02/11/2020



MAIN FLOOR
PRELIMINARY

SECOND FLOOR
PRELIMINARY



**THIS PLAN'S PROJECTED
HERS® INDEX = 44***
Projected Rating Based on Plans – Field Confirmation required

How does this floor plan rate?

Take a look: **100** = Standard new home+ **130** = Typical resale Home++
The lower number, the better! Refer to the RESNET® HERS index brochure or go to
www.RESNET.us and **www.HERSindex.com**

What's a HERS® Index? *HERS stands for Home Energy Rating System, a system created by RESNET® to measure home energy efficiency.[^]*

A Projected HERS index or rating is a computer simulation performed prior to construction by a third-party HERS rater using RESNET-accredited rating software, rated feature and specification data derived from home plans, features and specifications, and other data selected or assumed by the rater. The projected HERS index is approximate and is subject to change without notice. Actual results will vary.