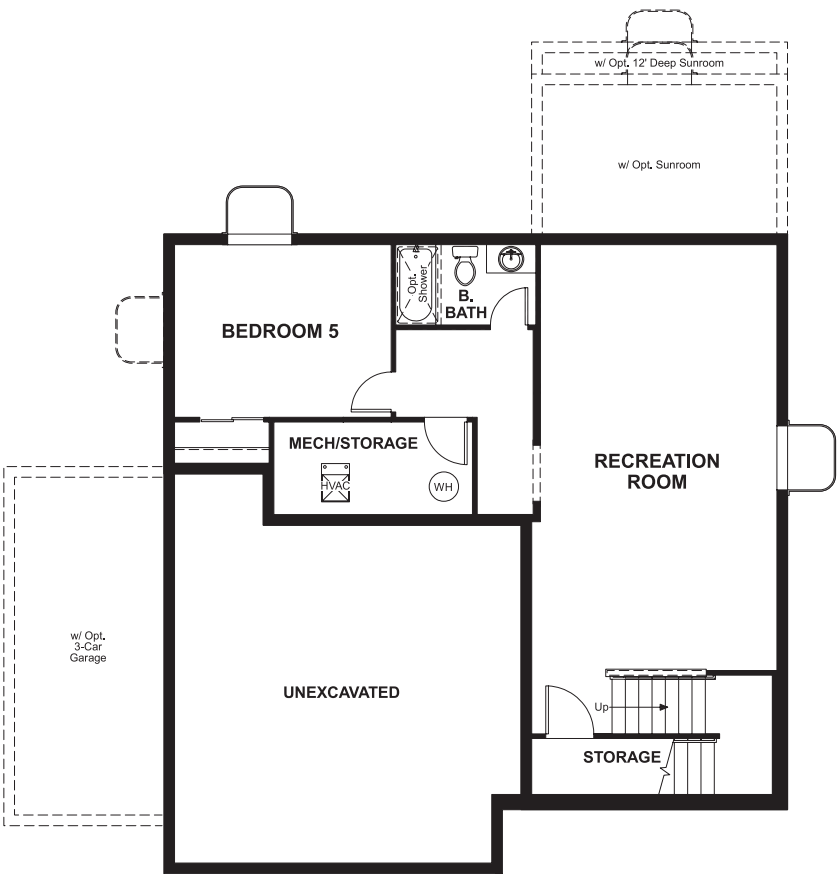


THE BEDFORD

Approx. 2,300 sq. ft. | 2 stories | 3-5 bedrooms | 2- to 3-car garage | Plan #D722

BASEMENT



OPT. FINISHED BASEMENT



ELEVATION E

ABOUT THE BEDFORD

The beautiful Bedford plan offers two stories of smartly designed living space. On the main floor, you'll find a spacious dining room, great room and kitchen with a center island, as well as a convenient mudroom and powder room off the 2-car garage. Upstairs, there's a versatile loft, centrally located laundry room, hall bath and three inviting bedrooms—including the master bedroom with walk-in closet and private bath. Options: gourmet kitchen, finished basement, deluxe master bath, bedroom in lieu of the loft, sunroom, 3-car garage and covered patio.

COMMUNITY LOCATION:

Oak Neighborhood at Copperleaf | 4573 South Valdai Circle | Centennial, CO 80015 | 720.758.8915

HOME GALLERY LOCATION:

Denver Metro Home Gallery™ | 8000 East Belleview Avenue, Suite C-12 | Greenwood Village, CO 80111 | 888.402.4663



Floor plans and renderings are conceptual drawings and may vary from actual plans and homes as built. Options and features may not be available on all homes and are subject to change without notice. Actual homes may vary from photos and/or drawings which show upgraded landscaping and may not represent the lowest-priced homes in the community. Features may include optional upgrades and may not be available on all homes. Square footage numbers are approximate and are subject to change without notice. Prices, specifications and availability subject to change without notice. ©2019 Richmond American Homes, Richmond American Homes of Colorado, Inc. 12/4/2019



ELEVATION A



ELEVATION B



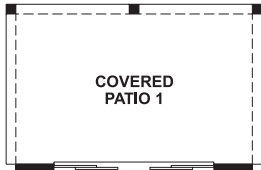
ELEVATION C



ELEVATION D

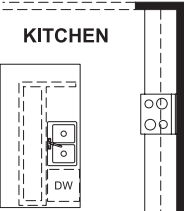
MAIN FLOOR

SECOND FLOOR

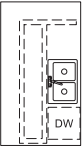


**OPT. CENTER
MEET DOOR**

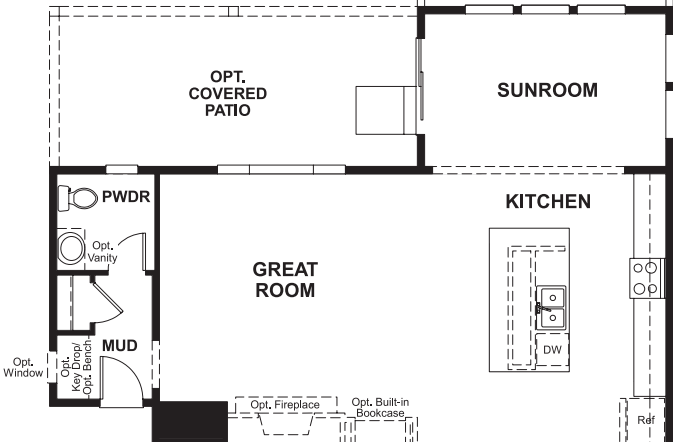
OPT. GOURMET KITCHEN



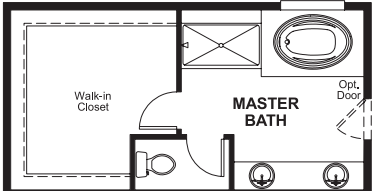
**OPT. 66"
REFRIGERATOR
W/ SUNROOM**



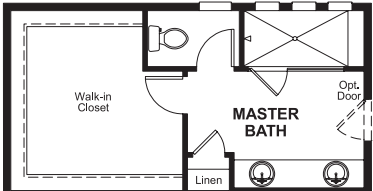
**OPT. 66" REFRIGERATOR
W/ SUNROOM AND
GOURMET KITCHEN**



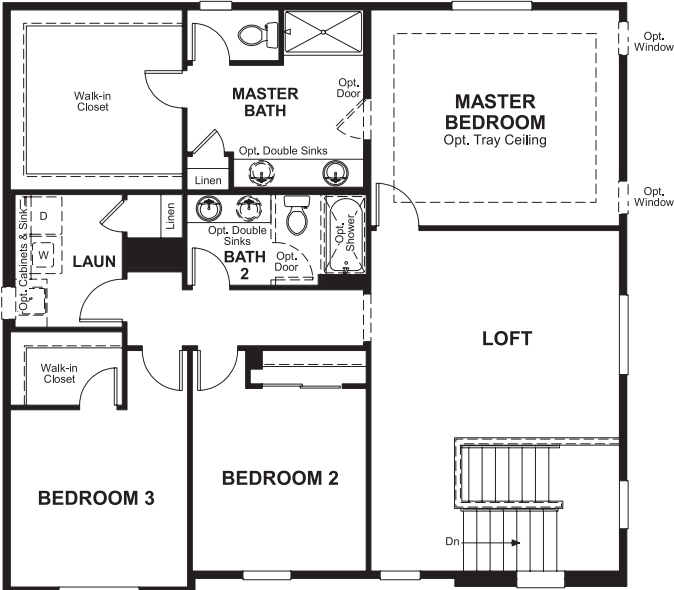
OPT. SUNROOM



OPT. DELUXE MASTER BATH



OPT. DELUXE MASTER BATH



OPT. BEDROOM 4

Floor plans and renderings are conceptual drawings and may vary from actual plans and homes as built. Options and features may not be available on all homes and are subject to change without notice. Actual homes may vary from photos and/or drawings which show upgraded landscaping and may not represent the lowest-priced homes in the community. Features may include optional upgrades and may not be available on all homes. Square footage numbers are approximate and are subject to change without notice. Prices, specifications and availability subject to change without notice. ©2019 Richmond American Homes, Richmond American Homes of Colorado, Inc. 12/4/2019

Floor plans and renderings are conceptual drawings and may vary from actual plans and homes as built. Options and features may not be available on all homes and are subject to change without notice. Actual homes may vary from photos and/or drawings which show upgraded landscaping and may not represent the lowest-priced homes in the community. Features may include optional upgrades and may not be available on all homes. Square footage numbers are approximate and are subject to change without notice. Prices, specifications and availability subject to change without notice. ©2019 Richmond American Homes, Richmond American Homes of Colorado, Inc. 12/4/2019