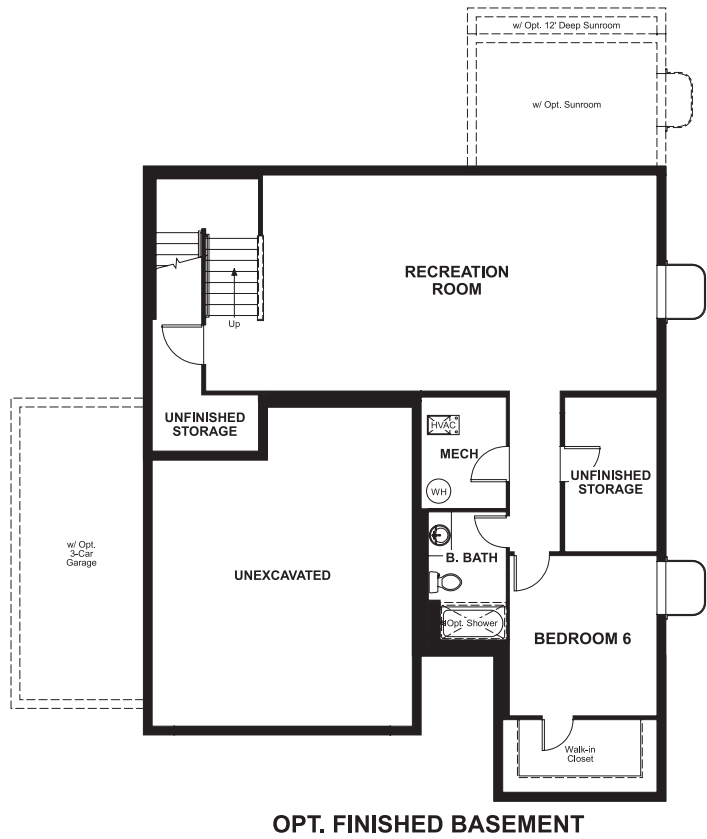


# THE HOPEWELL

Approx. 2,680 sq. ft. | 2 stories | 3-6 bedrooms | 2- to 3-car garage | Plan #D724

## BASEMENT



OPT. FINISHED BASEMENT



ELEVATION E

## ABOUT THE HOPEWELL

Love to entertain? The Hopewell's wide open great room and dining area are ideal for gathering with friends and family. The adjacent kitchen allows you to interact with guests without interrupting meal prep. Opt for a sunroom or covered patio for even more space to mingle. Upstairs, enjoy a loft, two guest rooms and a large master bedroom with a private bath and immense walk-in closet. Personalize with a tech center, bonus bedrooms, a deluxe master bath and more.

### COMMUNITY LOCATION:

Oak Neighborhood at Copperleaf | 4573 South Valdai Circle | Centennial, CO 80015 | **720.758.8915**

### HOME GALLERY LOCATION:

Denver Metro Home Gallery™ | 8000 East Bellevue Avenue, Suite C-12 | Greenwood Village, CO 80111 | **888.402.4663**



Floor plans and renderings are conceptual drawings and may vary from actual plans and homes as built. Options and features may not be available on all homes and are subject to change without notice. Actual homes may vary from photos and/or drawings which show upgraded landscaping and may not represent the lowest-priced homes in the community. Features may include optional upgrades and may not be available on all homes. Square footage numbers are approximate and are subject to change without notice. Prices, specifications and availability subject to change without notice. ©2019 Richmond American Homes, Richmond American Homes of Colorado, Inc. 12/4/2019



ELEVATION A



ELEVATION B

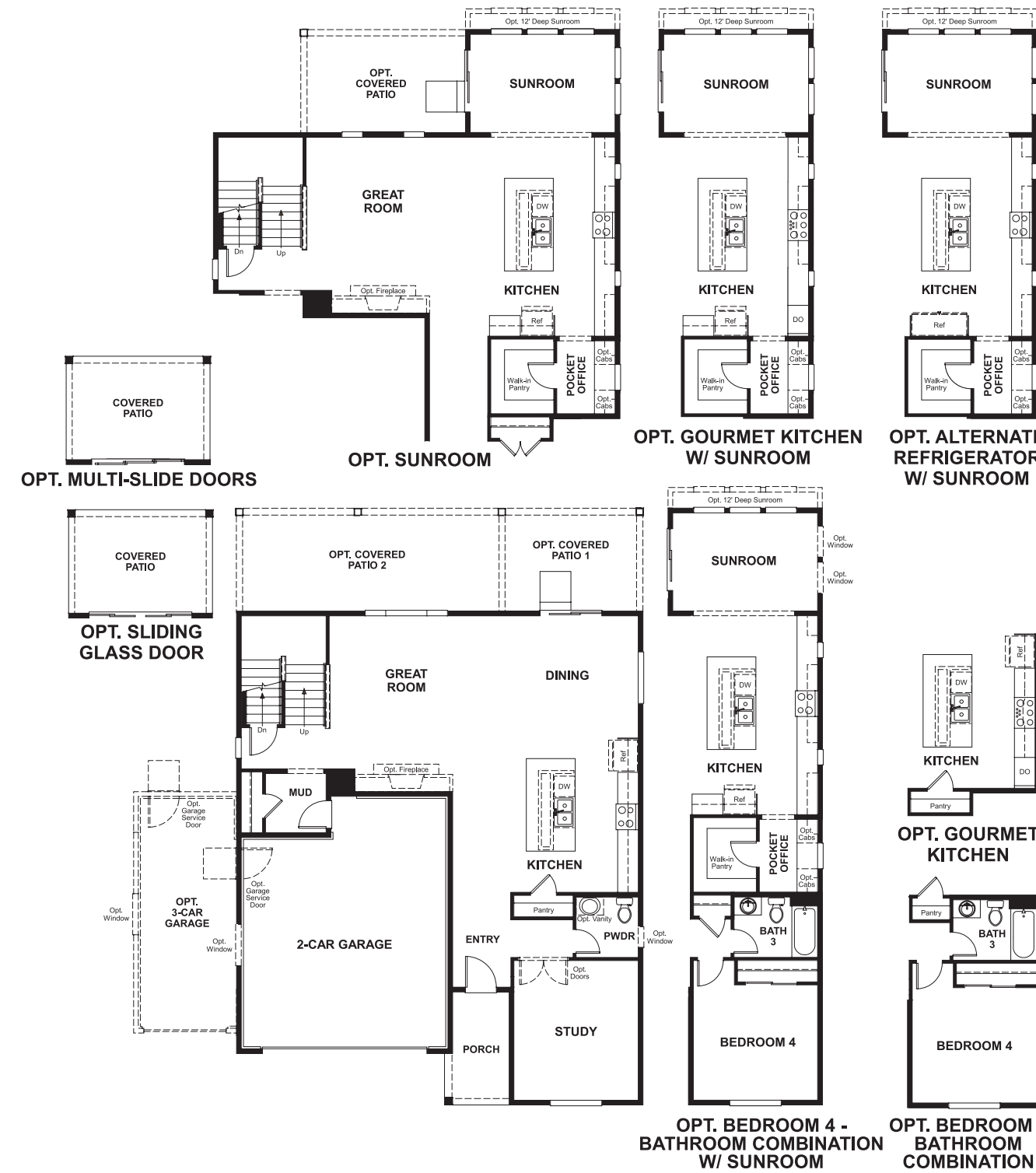


ELEVATION C

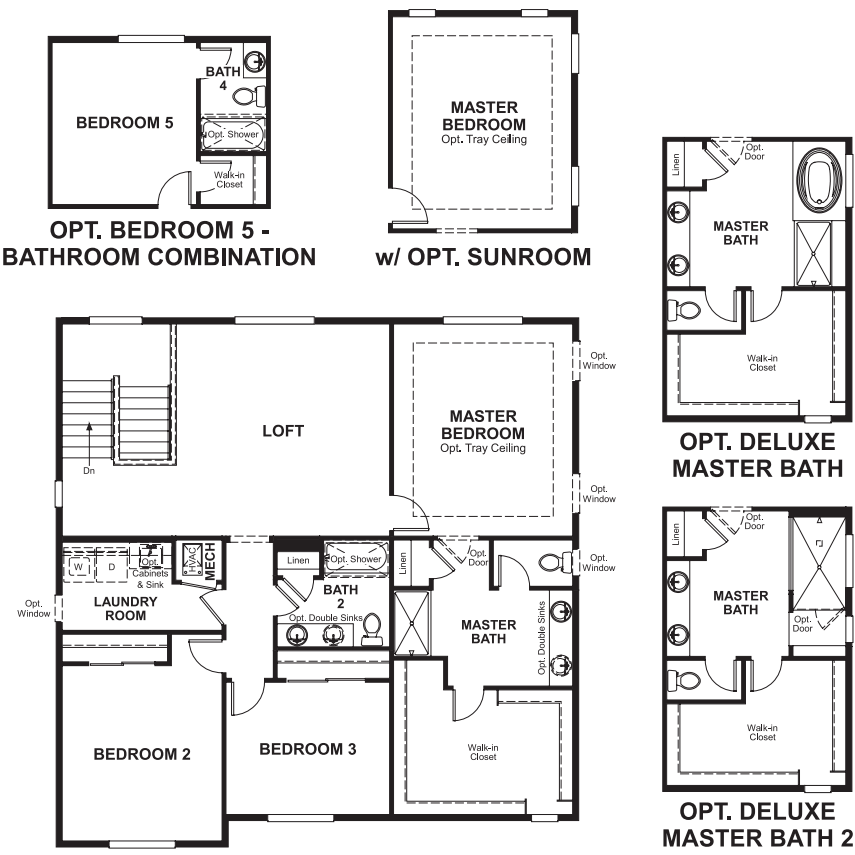


ELEVATION D

MAIN FLOOR



SECOND FLOOR



Floor plans and renderings are conceptual drawings and may vary from actual plans and homes as built. Options and features may not be available on all homes and are subject to change without notice. Actual homes may vary from photos and/or drawings which show upgraded landscaping and may not represent the lowest-priced homes in the community. Features may include optional upgrades and may not be available on all homes. Square footage numbers are approximate and are subject to change without notice. Prices, specifications and availability subject to change without notice. ©2019 Richmond American Homes, Richmond American Homes of Colorado, Inc. 12/4/2019

Floor plans and renderings are conceptual drawings and may vary from actual plans and homes as built. Options and features may not be available on all homes and are subject to change without notice. Actual homes may vary from photos and/or drawings which show upgraded landscaping and may not represent the lowest-priced homes in the community. Features may include optional upgrades and may not be available on all homes. Square footage numbers are approximate and are subject to change without notice. Prices, specifications and availability subject to change without notice. ©2019 Richmond American Homes, Richmond American Homes of Colorado, Inc. 12/4/2019