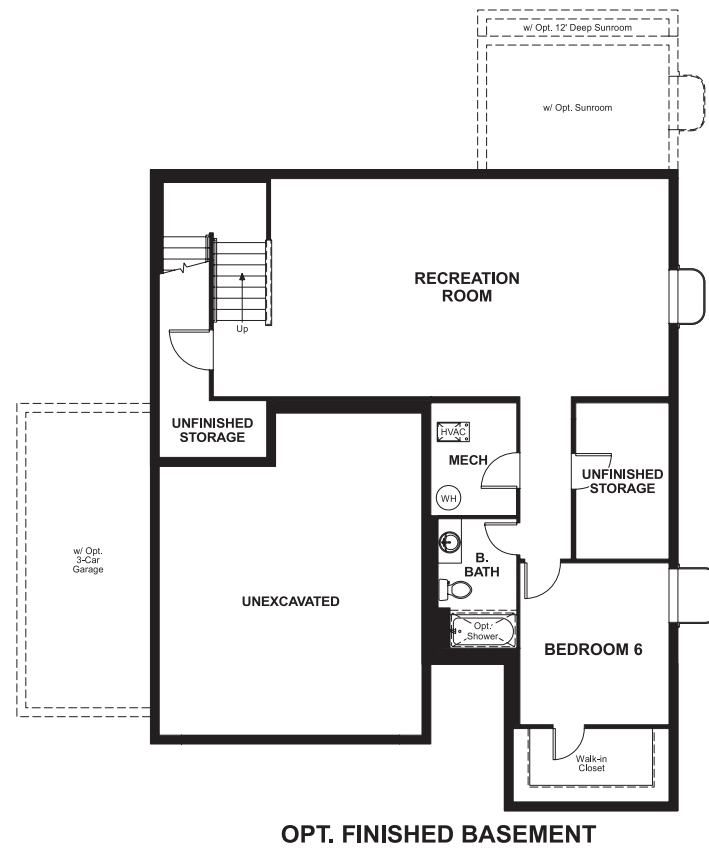


## BASEMENT



OPT. FINISHED BASEMENT



ELEVATION E

## ABOUT THE HOPEWELL

The Hopewell plan is ideal for entertaining, with a formal dining room, a spacious great room and a well-appointed kitchen with a center island, breakfast nook and optional gourmet features. The main floor also boasts a private study and a convenient master suite with an optional deluxe bath. Upstairs, you'll find a full bath and two large bedrooms with walk-in closets. Personalize this plan with an optional sunroom, loft and finished basement.

### COMMUNITY LOCATION:

Ridgeline at Meridian Village | 14925 Pepper Pike Drive | Parker, CO 80134 | 303.620.5425

### HOME GALLERY LOCATION:

Denver Metro Home Gallery™ | 8000 East Belleview Avenue, Suite C-12 | Greenwood Village, CO 80111 | 888.402.4663



ELEVATION A



ELEVATION B



ELEVATION C



ELEVATION D



Floor plans and renderings are conceptual drawings and may vary from actual plans and homes as built. Options and features may not be available on all homes and are subject to change without notice. Actual homes may vary from photos and/or drawings which show upgraded landscaping and may not represent the lowest-priced homes in the community. Features may include optional upgrades and may not be available on all homes. Square footage numbers are approximate and are subject to change without notice. Prices, specifications and availability subject to change without notice. ©2020 Richmond American Homes, Richmond American Homes of Colorado, Inc. 2/19/2020

