



ELEVATION D

ABOUT THE FULMER X


The appealing Fulmer plan offers a charming porch entry. Toward the back of the home, you’ll find an open layout with a great room, a dining area and a large kitchen with a walk-in pantry and center island. You’ll also find a bedroom and a bath on this floor. The second-floor master suite includes an immense walk-in closet and a private bath with double sinks, a shower and a separate soaking tub. Three additional bedrooms, a laundry, a bath and a loft complete the floor. Make this plan your own with a range of exciting personalization options, including gourmet or deluxe kitchen features, a California room, a great room fireplace, a 12’ center-meet sliding door to the backyard, an additional bedroom and bath in lieu of the loft, and more.

COMMUNITY LOCATION:

Pineberry at the Preserve | 8833 Bay Laurel Street | Chino, CA 91708 | **909.942.6781**

HOME GALLERY LOCATION:

Southern California Home Gallery™ | 5171 California Avenue, Suite 110 | Irvine, CA 92617 | **909.579.3288**

EQUAL HOUSING
OPPORTUNITY

Floor plans and renderings are conceptual drawings and may vary from actual plans and homes as built. Options and features may not be available on all homes and are subject to change without notice. Actual homes may vary from photos and/or drawings which show upgraded landscaping and may not represent the lowest-priced homes in the community. Features may include optional upgrades and may not be available on all homes. Square footage numbers are approximate and are subject to change without notice. Prices, specifications and availability subject to change without notice. ©2019 Richmond American Homes, Richmond American Homes of Maryland, Inc., California Bureau of Real Estate – Real Estate Broker, Corporation License Number 01842595. 9/13/2019



ELEVATION A

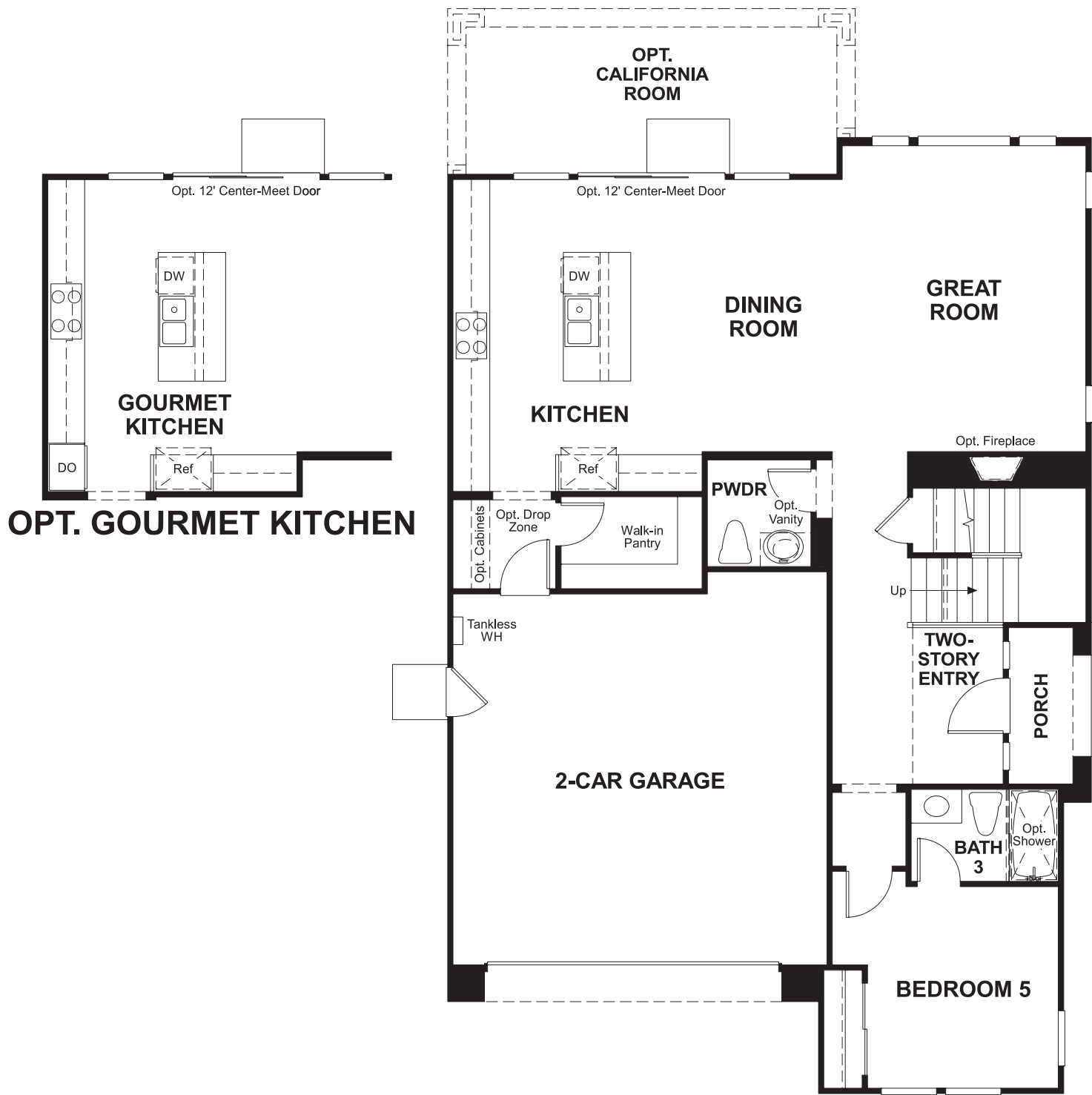


ELEVATION B



ELEVATION C

MAIN FLOOR



SECOND FLOOR



THIS PLAN'S PROJECTED
HERS® INDEX = 39*
Projected Rating Based on Plans – Field Confirmation required

How does this floor plan rate?
Take a look: **100** = Standard new home* **130** = Typical resale Home**
The lower number, the better! Refer to the RESNET® HERS index brochure or go to www.RESNET.us and www.HERSindex.com

What's a HERS® Index? HERS stands for Home Energy Rating System, a system created by RESNET® to measure home energy efficiency.[^]
A Projected HERS index or rating is a computer simulation performed prior to construction by a third-party HERS rater using RESNET-accredited rating software, rated feature and specification data derived from home plans, features and specifications, and other data selected or assumed by the rater. The projected HERS index is approximate and is subject to change without notice. Actual results will vary.