

# THE DALEY

Approx. 3,370 sq. ft. | 2 stories | 7 bedrooms | 3-car garage | Plan #W600



ELEVATION H

## ABOUT THE DALEY

A grand two-story entry welcomes guests to the inviting Daley plan. The main floor offers a private study, a spacious great room and a large kitchen featuring an immense center island, walk-in pantry and adjacent dining room. You'll also appreciate a convenient bedroom with an attached bath, and a relaxing covered patio. Upstairs, enjoy a versatile loft and four large bedrooms, including an elegant master suite with a spa-like bath and expansive walk-in closet. Personalize this plan with a formal dining room, gourmet or chef's kitchen and finished walk-out basement boasting a bedroom, bathroom, rec room and covered patio.



ELEVATION F



ELEVATION G

### HOME GALLERY LOCATION:

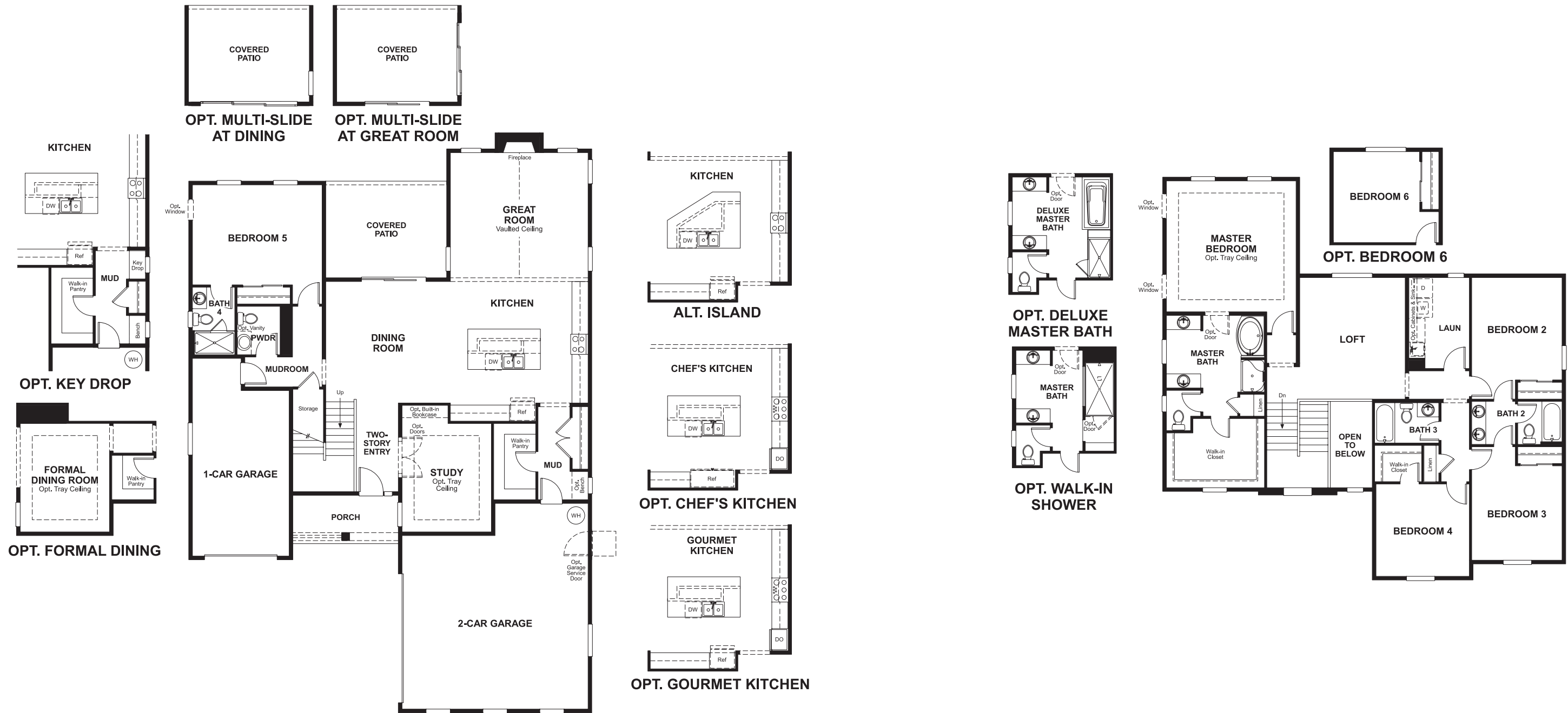
Washington Home Gallery™ | 20829 72<sup>nd</sup> Avenue South, Suite 115 | Kent, WA 98032 | **253.446.7277**



Floor plans and renderings are conceptual drawings and may vary from actual plans and homes as built. Options and features may not be available on all homes and are subject to change without notice. Actual homes may vary from photos and/or drawings which show upgraded landscaping and may not represent the lowest-priced homes in the community. Features may include optional upgrades and may not be available on all homes. Square footage numbers are approximate and are subject to change without notice. Prices, specifications and availability subject to change without notice. ©2019 Richmond American Homes, Richmond American Homes of Washington, Inc. 8/28/2019

MAIN FLOOR

SECOND FLOOR



Floor plans and renderings are conceptual drawings and may vary from actual plans and homes as built. Options and features may not be available on all homes and are subject to change without notice. Actual homes may vary from photos and/or drawings which show upgraded landscaping and may not represent the lowest-priced homes in the community. Features may include optional upgrades and may not be available on all homes. Square footage numbers are approximate and are subject to change without notice. Prices, specifications and availability subject to change without notice. ©2019 Richmond American Homes, Richmond American Homes of Washington, Inc. 8/28/2019

Floor plans and renderings are conceptual drawings and may vary from actual plans and homes as built. Options and features may not be available on all homes and are subject to change without notice. Actual homes may vary from photos and/or drawings which show upgraded landscaping and may not represent the lowest-priced homes in the community. Features may include optional upgrades and may not be available on all homes. Square footage numbers are approximate and are subject to change without notice. Prices, specifications and availability subject to change without notice. ©2019 Richmond American Homes, Richmond American Homes of Washington, Inc. 8/28/2019