



ELEVATION M

ABOUT HARRIS

The Harris boasts a thoughtfully designed kitchen, which overlooks a great room and a dining nook—offering access to an inviting patio. A mudroom provides a convenient entry point from the garage, and a formal dining room is ready to fill in as a quiet study. Other highlights include an RV garage, a centrally located laundry room and three bedrooms—including a generous owner’s suite with a private bath and walk-in closet. Additional personalization options include a gourmet kitchen with a double oven and a deluxe owner’s bath with a separate shower and soaking tub.

HOME GALLERY LOCATION:


Jacksonville Home Gallery™ | 10255 Fortune Parkway, Suite 150 | Jacksonville, FL 32256 | **904.541.2555**

\*This information is presented for education purposes only. The HERS index for a confirmed rating will be determined by a third-party HERS rater based on data gathered from on-site observations and, if required, testing of rated features for a home as featured, optioned, located, oriented and/or built.

+Standard new home is based on the RESNET® Reference Home definition with a HERS® index of 100 (based on the 2006 International Energy Conservation Code).

++Typical resale home is based on the U.S. Department of Energy definition with a HERS® index of 130.

^RESNET® has developed the HERS® index to indicate the comparative efficiencies of homes. It is no guarantee that energy efficiencies will be achieved.



Floor plans and renderings are conceptual drawings and may vary from actual plans and homes as built. Options and features may not be available on all homes and are subject to change without notice. Actual homes may vary from photos and/or drawings which show upgraded landscaping and may not represent the lowest-priced homes in the community. Features may include optional upgrades and may not be available on all homes. Square footage numbers are approximate and are subject to change without notice. Prices, specifications and availability subject to change without notice. ©2021 Richmond American Homes, Richmond American Homes of Florida, LP, CBC1257429 2/24/2021



ELEVATION K

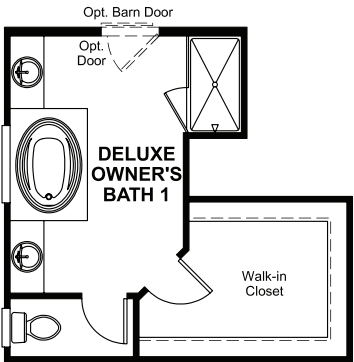
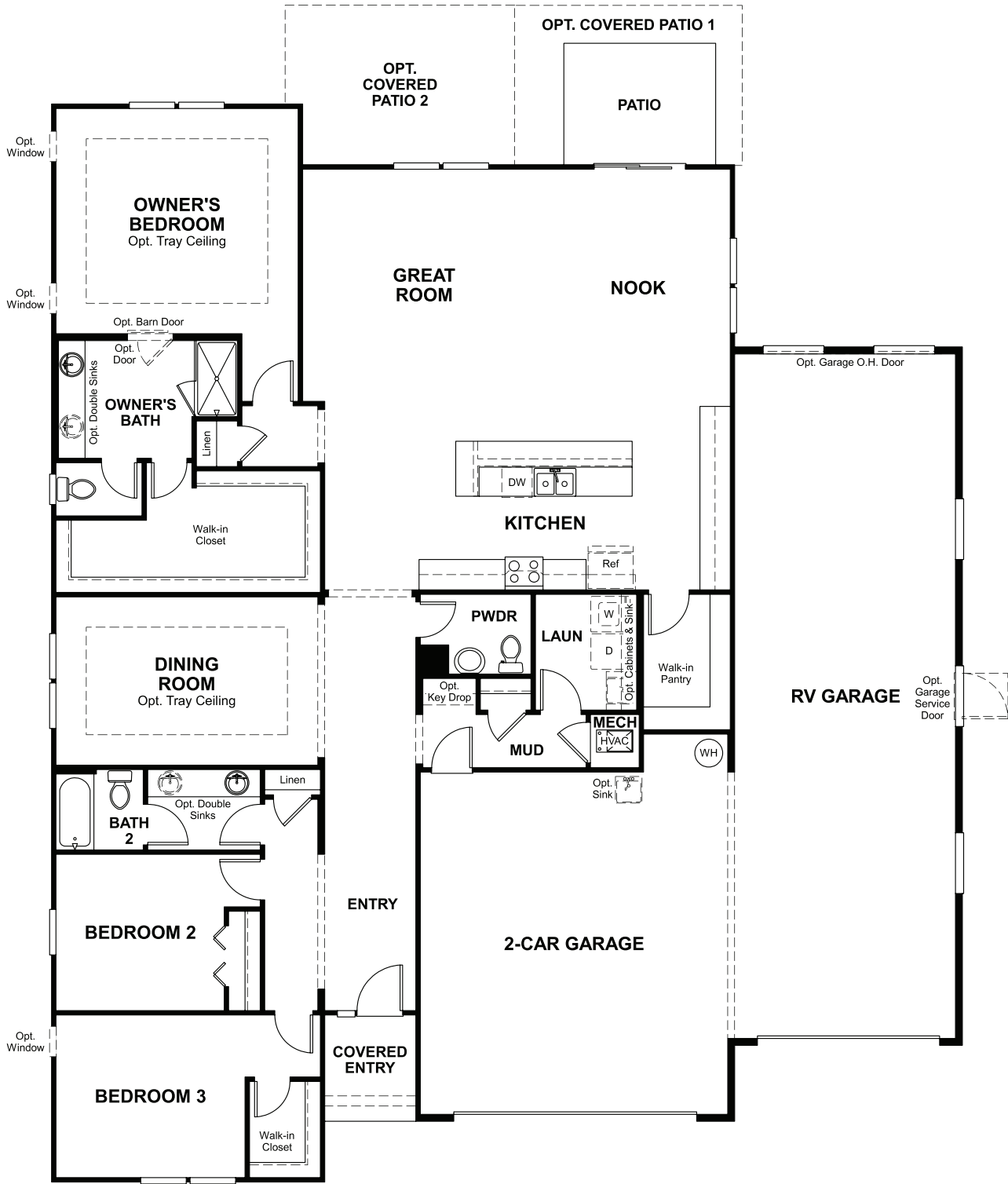


ELEVATION L

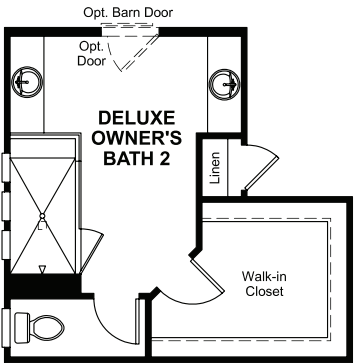


MAIN FLOOR

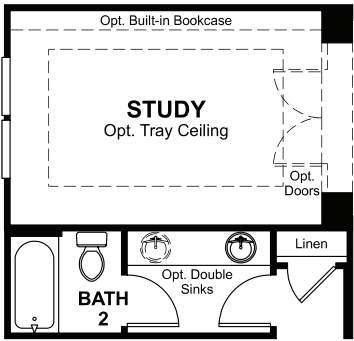
MAIN FLOOR OPTIONS



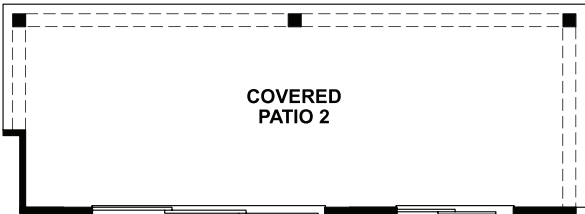
OPT. DELUXE OWNER'S BATH



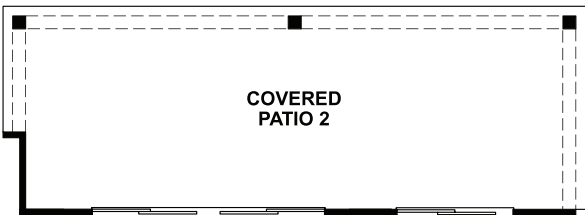
OPT. DELUXE OWNER'S BATH #2



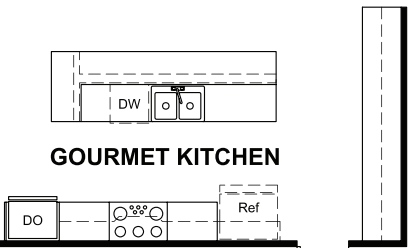
OPT. STUDY



OPT. MULTI-SLIDE DOOR



OPT. CENTER-MEET DOOR



OPT. GOURMET KITCHEN

THIS PLAN'S PROJECTED  
**HERS® INDEX = 62\***  
Projected Rating Based on Plans – Field Confirmation required

**How does this floor plan rate?**  
Take a look: **100** = Standard new home+ **130** = Typical resale Home++  
The lower number, the better! Refer to the RESNET® HERS index brochure or go to [www.RESNET.us](http://www.RESNET.us) and [www.HERSindex.com](http://www.HERSindex.com)

**What's a HERS® Index?** HERS stands for Home Energy Rating System, a system created by RESNET® to measure home energy efficiency.^  
A Projected HERS index or rating is a computer simulation performed prior to construction by a third-party HERS rater using RESNET-accredited rating software, rated feature and specification data derived from home plans, features and specifications, and other data selected or assumed by the rater. The projected HERS index is approximate and is subject to change without notice. Actual results will vary.