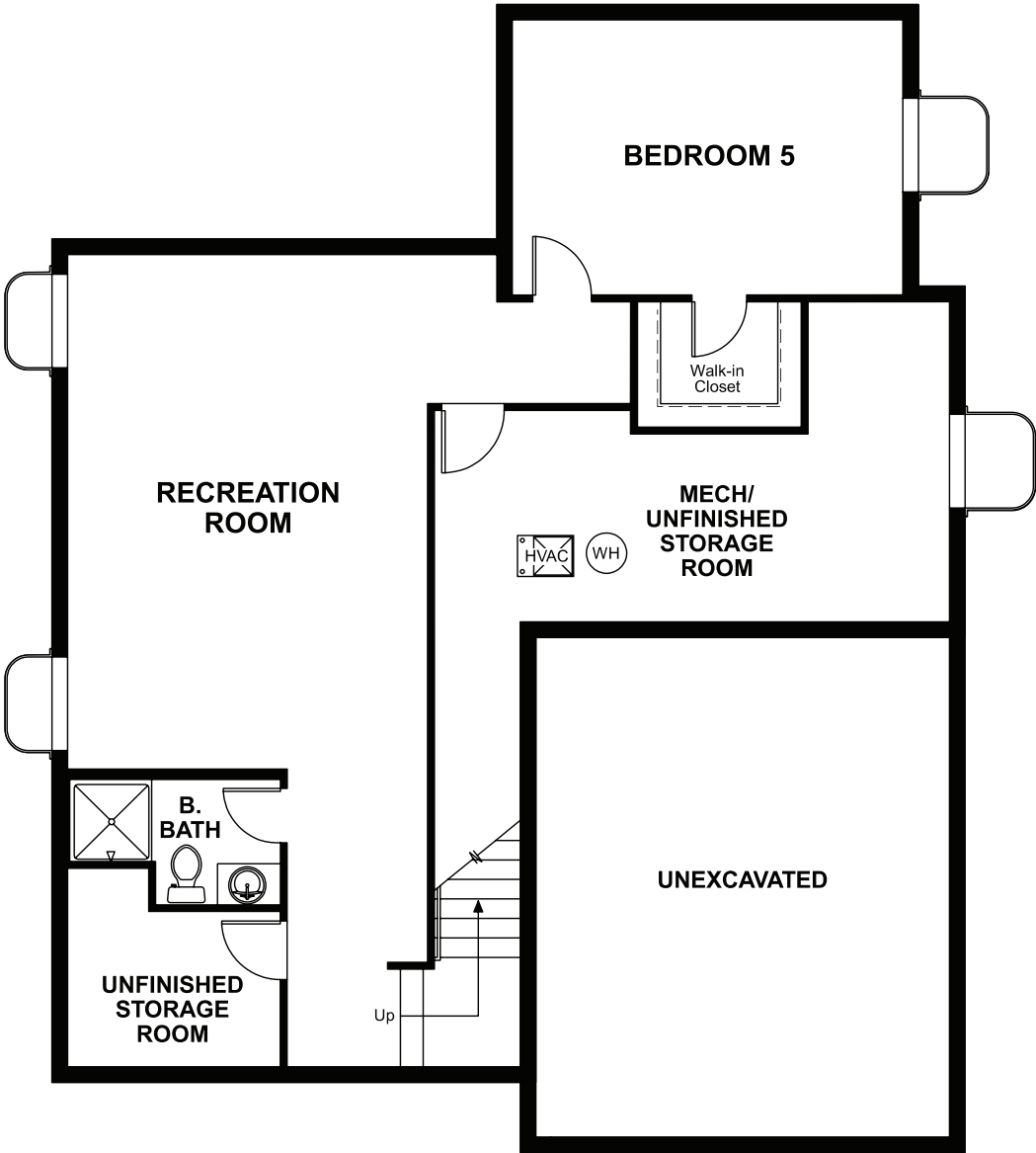


THE VERNON

Approx. 2,460 sq. ft. | 2 stories | 4-5 bedrooms | 2-car garage | Plan #D221

BASEMENT




OPT. FINISHED BASEMENT

COMMUNITY LOCATION:

Ascent Village at Sterling Ranch | 9873 Eagle River Street | Littleton, CO 80125 | 303.850.5750

HOME GALLERY LOCATION:

Denver Metro Home Gallery™ | 8000 East Belleview Avenue, Suite C-12 | Greenwood Village, CO 80111 | 888.402.4663

 Floor plans and renderings are conceptual drawings and may vary from actual plans and homes as built. Options and features may not be available on all homes and are subject to change without notice. Actual homes may vary from photos and/or drawings which show upgraded landscaping and may not represent the lowest-priced homes in the community. Features may include optional upgrades and may not be available on all homes. Square footage numbers are approximate and are subject to change without notice. Prices, specifications and availability subject to change without notice. ©2020 Richmond American Homes, Richmond American Homes of Colorado, Inc. 3/10/2020



ELEVATION D

ABOUT THE VERNON

A covered front porch gives the Vernon attractive curb appeal. An open great room that overlooks the dining room and kitchen with island and corner walk-in pantry. Flex space helps personalize the home's layout for your lifestyle. Upstairs, the master suite has a large walk-in closet. Options include a finished basement, covered patio and deluxe master bath.



ELEVATION A



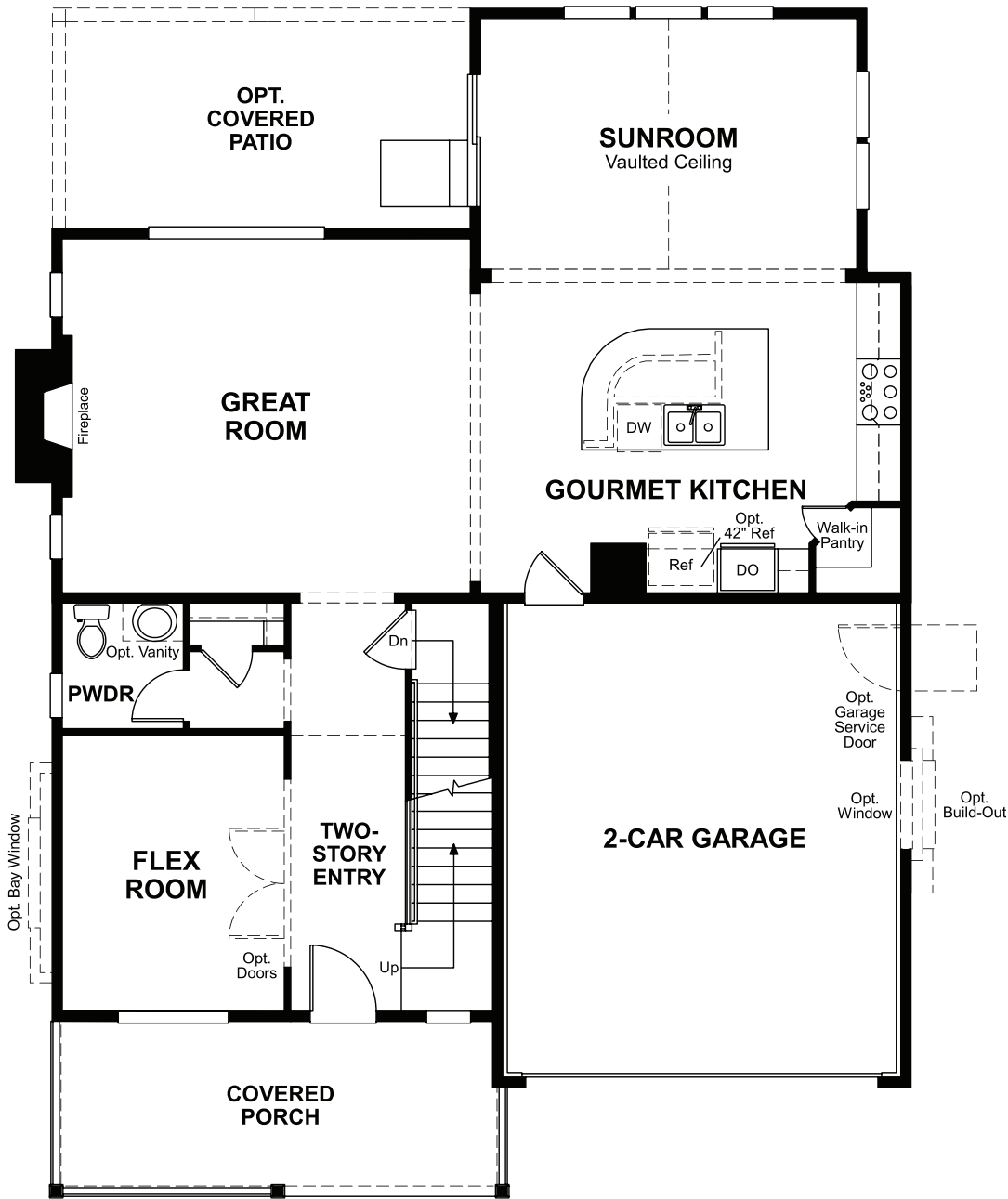
ELEVATION B



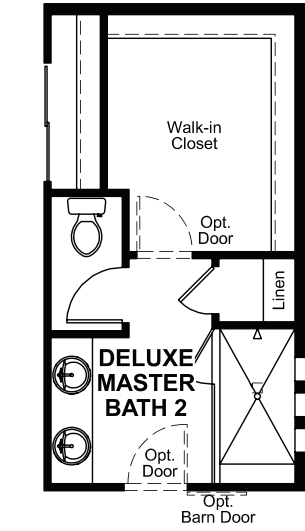
ELEVATION C



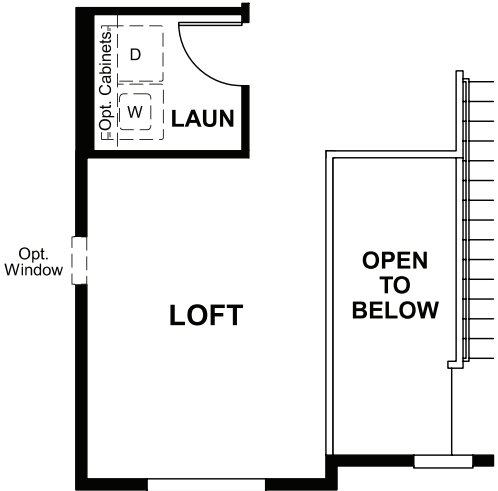
MAIN FLOOR



SECOND FLOOR



OPT. DELUXE MASTER BATH 2



OPT. LOFT

Floor plans and renderings are conceptual drawings and may vary from actual plans and homes as built. Options and features may not be available on all homes and are subject to change without notice. Actual homes may vary from photos and/or drawings which show upgraded landscaping and may not represent the lowest-priced homes in the community. Features may include optional upgrades and may not be available on all homes. Square footage numbers are approximate and are subject to change without notice. Prices, specifications and availability subject to change without notice. ©2020 Richmond American Homes, Richmond American Homes of Colorado, Inc. 3/10/2020

Floor plans and renderings are conceptual drawings and may vary from actual plans and homes as built. Options and features may not be available on all homes and are subject to change without notice. Actual homes may vary from photos and/or drawings which show upgraded landscaping and may not represent the lowest-priced homes in the community. Features may include optional upgrades and may not be available on all homes. Square footage numbers are approximate and are subject to change without notice. Prices, specifications and availability subject to change without notice. ©2020 Richmond American Homes, Richmond American Homes of Colorado, Inc. 3/10/2020