



ELEVATION G

ABOUT THE JEFFERSON

The impressive Jefferson plan boasts two stories of versatile living space. A covered porch entry leads into an open layout featuring a great room with a fireplace, a dining room and a spacious kitchen with an optional center island. Choose gourmet or chef's kitchen features, and add an adjacent covered patio for al fresco dining! You can also opt for a bedroom and bath in lieu of the dining room. The inviting master suite is upstairs, and offers a walk-in closet and private bath with dual sinks, a shower and a lavish soaking tub. Personalize with deluxe features! Three additional bedrooms, a loft and a laundry round out this plan.

COMMUNITY LOCATION:

Fairview Terrace | 7903 17th Street Southeast | Lake Stevens, WA 98258 | **253.235.4570**

HOME GALLERY LOCATION:

Washington Home Gallery™ | 20829 72nd Avenue South, Suite 115 | Kent, WA 98032 | **253.446.7277**

*This information is presented for education purposes only. The HERS index for a confirmed rating will be determined by a third-party HERS rater based on data gathered from on-site observations and, if required, testing of rated features for a home as featured, optioned, located, oriented and/or built.

+Standard new home is based on the RESNET® Reference Home definition with a HERS® index of 100 (based on the 2006 International Energy Conservation Code).

++Typical resale home is based on the U.S. Department of Energy definition with a HERS® index of 130.

^RESNET® has developed the HERS® index to indicate the comparative efficiencies of homes. It is no guarantee that energy efficiencies will be achieved.



Floor plans and renderings are conceptual drawings and may vary from actual plans and homes as built. Options and features may not be available on all homes and are subject to change without notice. Actual homes may vary from photos and/or drawings which show upgraded landscaping and may not represent the lowest-priced homes in the community. Features may include optional upgrades and may not be available on all homes. Square footage numbers are approximate and are subject to change without notice. Prices, specifications and availability subject to change without notice. ©2020 Richmond American Homes, Richmond American Homes of Washington, Inc. 7/6/2020

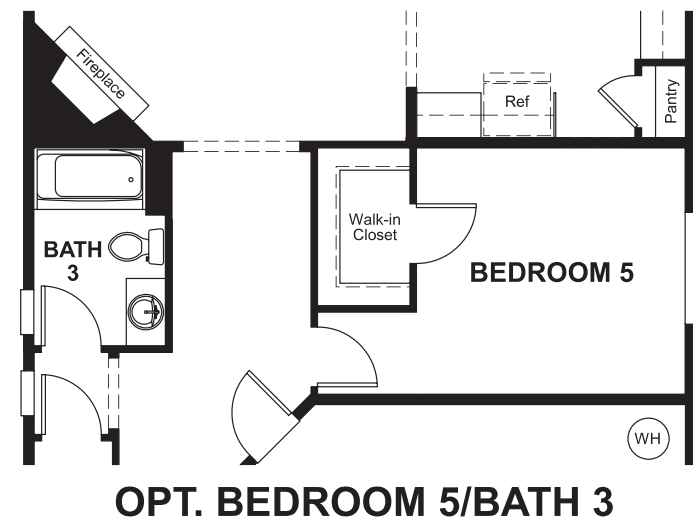
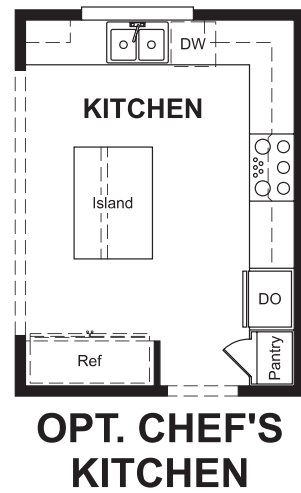
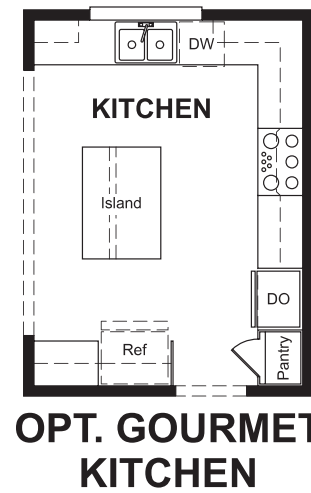
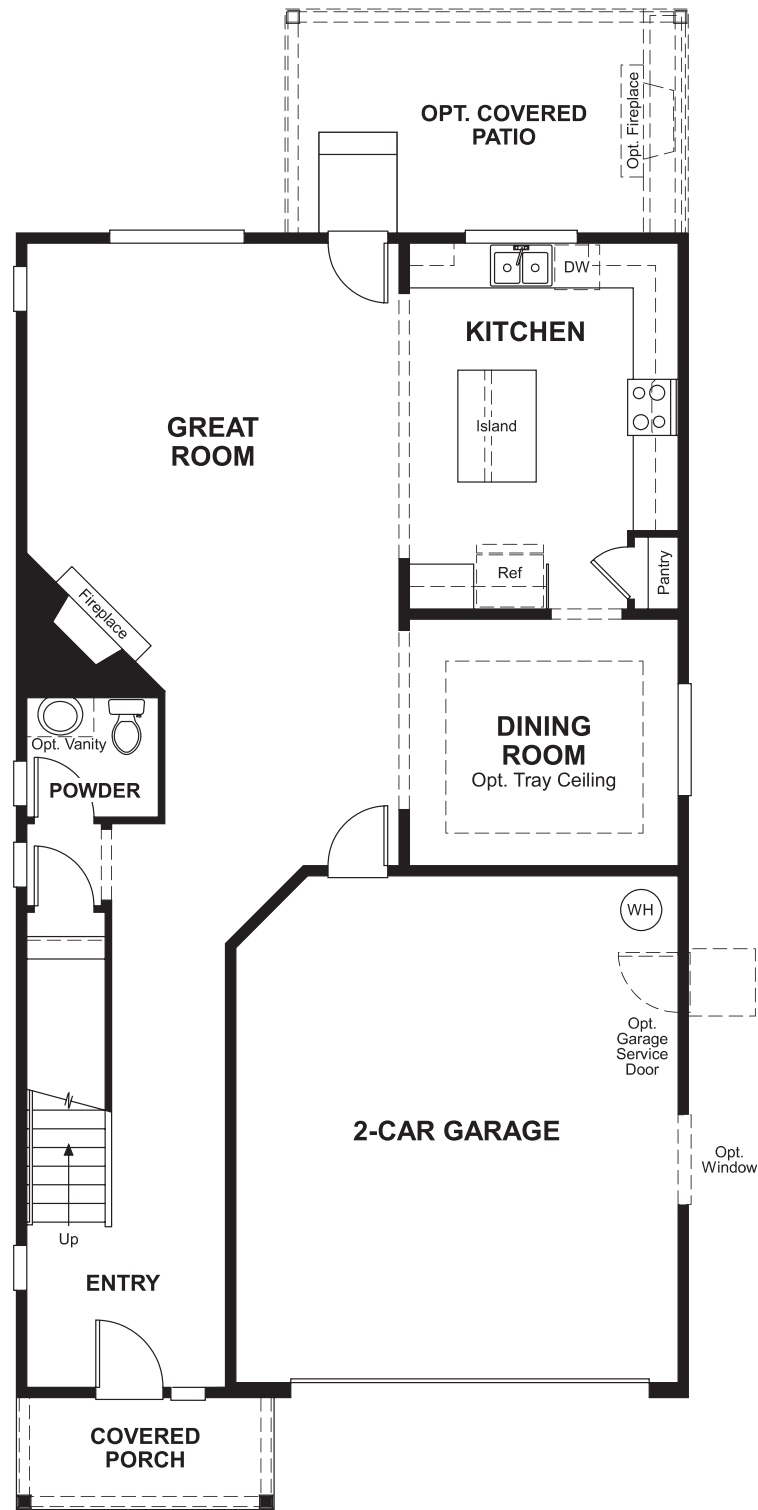


ELEVATION E

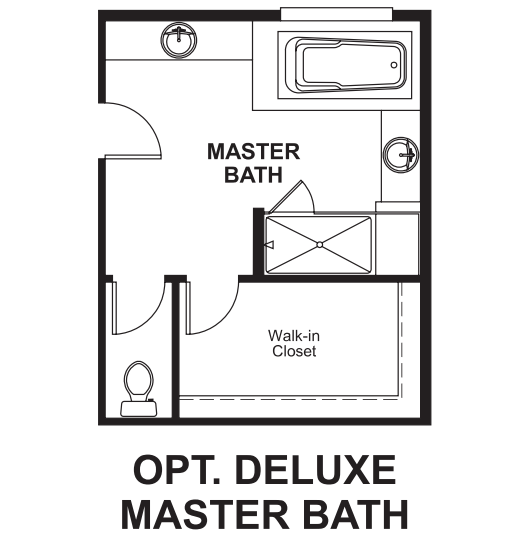
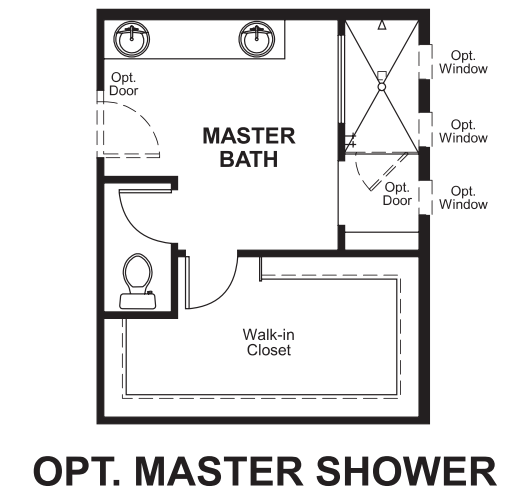
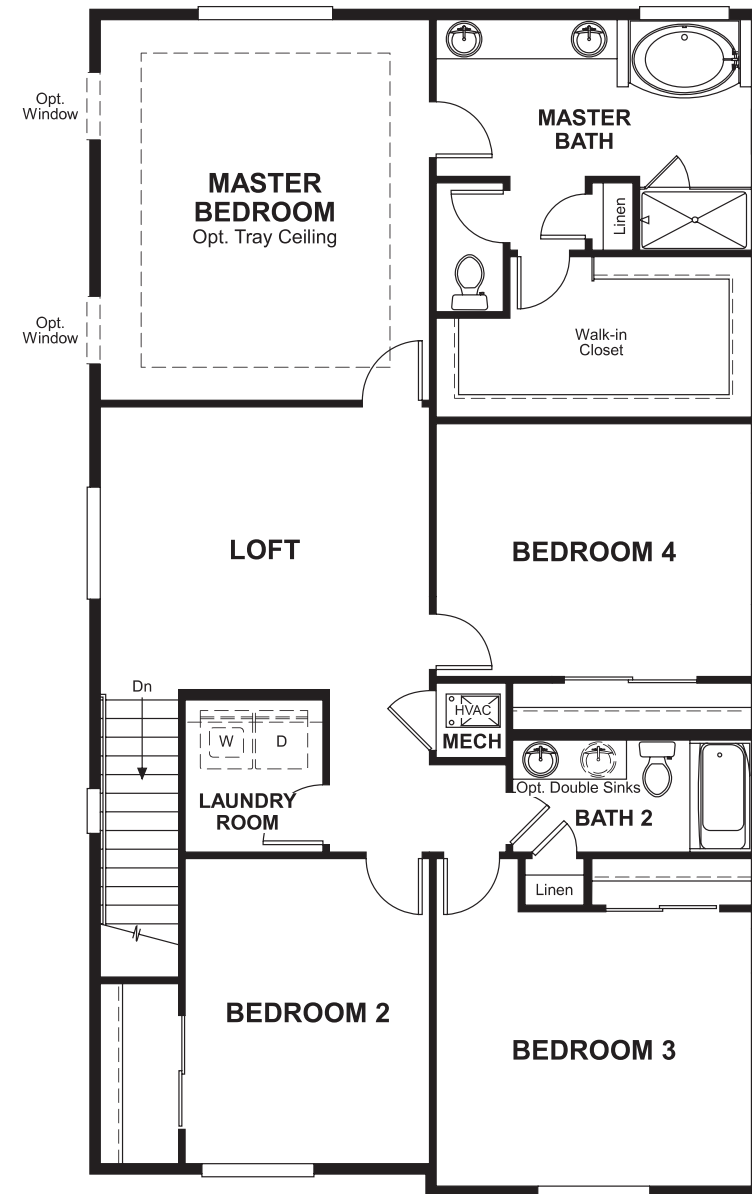


ELEVATION F

MAIN FLOOR



SECOND FLOOR



THIS PLAN'S PROJECTED **HERS® INDEX = 59***
 Projected Rating Based on Plans – Field Confirmation required

How does this floor plan rate?
 Take a look: **100** = Standard new home+ **130** = Typical resale Home++
 The lower number, the better! Refer to the RESNET® HERS index brochure or go to www.RESNET.us and www.HERSindex.com

What's a HERS® Index? HERS stands for Home Energy Rating System, a system created by RESNET® to measure home energy efficiency. A Projected HERS index or rating is a computer simulation performed prior to construction by a third-party HERS rater using RESNET-accredited rating software, rated feature and specification data derived from home plans, features and specifications, and other data selected or assumed by the rater. The projected HERS index is approximate and is subject to change without notice. Actual results will vary.