

THE ABRAMS

Approx. 1,510 sq. ft. | 1 story | 2-3 bedrooms | 2-car garage | Plan #N838



ELEVATION C

ABOUT THE ABRAMS

The Abrams plan showcases an open-concept layout that's ideal for entertaining. An inviting covered porch entry leads to an airy great room that flows into a dining nook and an impressive kitchen, complete with a walk-in pantry and a center island. The primary suite is adjacent, and offers a walk-in closet and a private bath. Two additional bedrooms and a bath round out this versatile plan. Make this home your own and opt for gourmet or deluxe kitchen features, add a covered patio off the great room, or choose a study in place of the third bedroom.

COMMUNITY LOCATION:

Woodberry at Bradshaw Crossing | 9602 Ogden Ranch Road | Sacramento, CA 95829 | **916.581.7002**

HOME GALLERY LOCATION:

Northern California Home Gallery™ | One Harbor Center, Suite 150 | Suisun City, CA 94585 | **707.416.2800**

*This information is presented for education purposes only. The HERS index for a confirmed rating will be determined by a third-party HERS rater based on data gathered from on-site observations and, if required, testing of rated features for a home as featured, optioned, located, oriented and/or built.

+Standard new home is based on the RESNET® Reference Home definition with a HERS® index of 100 (based on the 2006 International Energy Conservation Code).

++Typical resale home is based on the U.S. Department of Energy definition with a HERS® index of 130.

^RESNET® has developed the HERS® index to indicate the comparative efficiencies of homes. It is no guarantee that energy efficiencies will be achieved.

Floor plans and renderings are conceptual drawings and may vary from actual plans and homes as built. Options and features may not be available on all homes and are subject to change without notice. Actual homes may vary from photos and/or drawings which show upgraded landscaping and may not represent the lowest-priced homes in the community. Features may include optional upgrades and may not be available on all homes. Square footage numbers are approximate and are subject to change without notice. ©2023 Richmond American Homes, Richmond American Homes of Maryland, Inc., California Department of Real Estate – Real Estate Broker, Corporation License Number 01842595. 08/17/2023



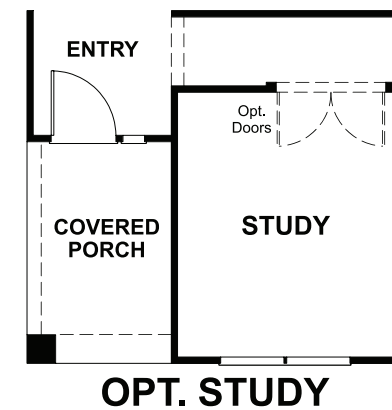
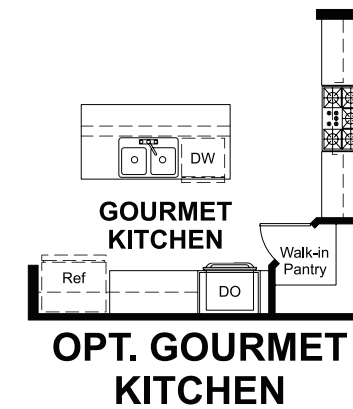
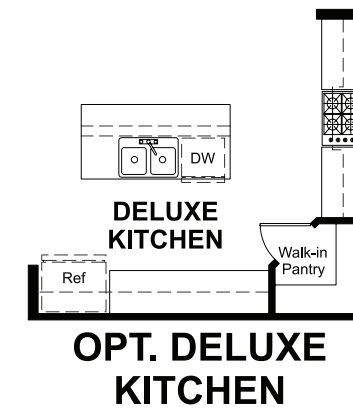
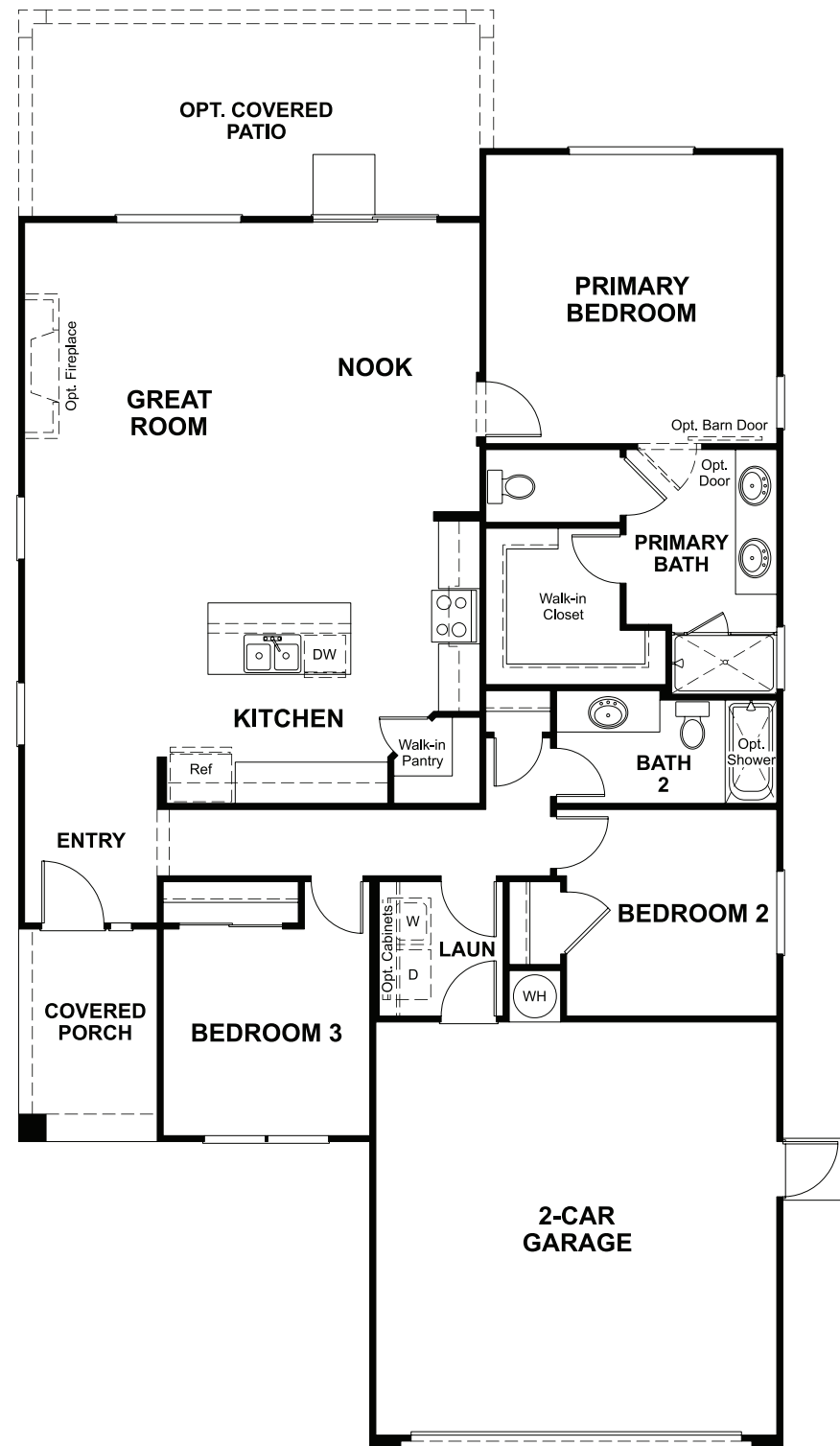
ELEVATION A



ELEVATION B

MAIN FLOOR

MAIN-FLOOR OPTIONS



THIS PLAN'S PROJECTED
HERS® INDEX = 34*
Projected Rating Based on Plans – Field Confirmation required

How does this floor plan rate?
Take a look: **100** = Standard new home+ **130** = Typical resale Home++
The lower number, the better! Refer to the RESNET® HERS index brochure or go to www.RESNET.us and www.HERSindex.com

What's a HERS® Index? HERS stands for Home Energy Rating System, a system created by RESNET® to measure home energy efficiency. A Projected HERS index or rating is a computer simulation performed prior to construction by a third-party HERS rater using RESNET-accredited rating software, rated feature and specification data derived from home plans, features and specifications, and other data selected or assumed by the rater. The projected HERS index is approximate and is subject to change without notice. Actual results will vary.