

THE BEAUMONT

Approx. 1,900 sq. ft. | 2 stories | 3-4 bedrooms | 2-car garage | Plan #N837



ELEVATION C

ABOUT THE BEAUMONT

Ample living space and exciting options make the Beaumont plan a standout. The main floor offers a dramatic two-story entry, which leads to an open layout with a great room, a dining nook and a kitchen with a center island and a walk-in pantry. Add a covered patio off the nook for a lovely outdoor space! Upstairs, you'll find the primary suite, which boasts a walk-in closet and a private bath. Two additional bedrooms, a bath and conveniently located laundry round out the residence. Add your personal touch to this plan with deluxe or gourmet kitchen features, or a fourth bedroom in lieu of the loft.

COMMUNITY LOCATION:

Woodberry at Bradshaw Crossing | 9602 Ogden Ranch Road | Sacramento, CA 95829 | **916.581.7002**

HOME GALLERY LOCATION:


Northern California Home Gallery™ | One Harbor Center, Suite 150 | Suisun City, CA 94585 | **707.416.2800**

*This information is presented for education purposes only. The HERS index for a confirmed rating will be determined by a third-party HERS rater based on data gathered from on-site observations and, if required, testing of rated features for a home as featured, optioned, located, oriented and/or built.

+Standard new home is based on the RESNET® Reference Home definition with a HERS® index of 100 (based on the 2006 International Energy Conservation Code).

++Typical resale home is based on the U.S. Department of Energy definition with a HERS® index of 130.

^RESNET® has developed the HERS® index to indicate the comparative efficiencies of homes. It is no guarantee that energy efficiencies will be achieved.



Floor plans and renderings are conceptual drawings and may vary from actual plans and homes as built. Options and features may not be available on all homes and are subject to change without notice. Actual homes may vary from photos and/or drawings which show upgraded landscaping and may not represent the lowest-priced homes in the community. Features may include optional upgrades and may not be available on all homes. Square footage numbers are approximate and are subject to change without notice. ©2023 Richmond American Homes, Richmond American Homes of Maryland, Inc., California Department of Real Estate – Real Estate Broker, Corporation License Number 01842595. 07/28/2023



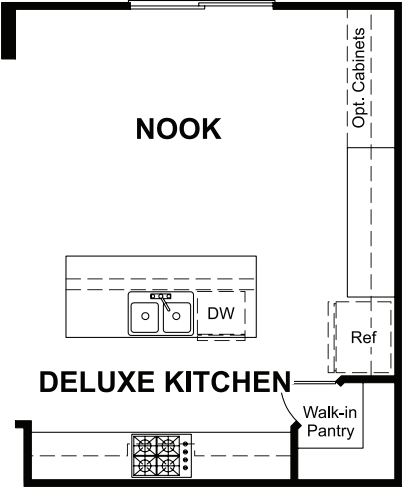
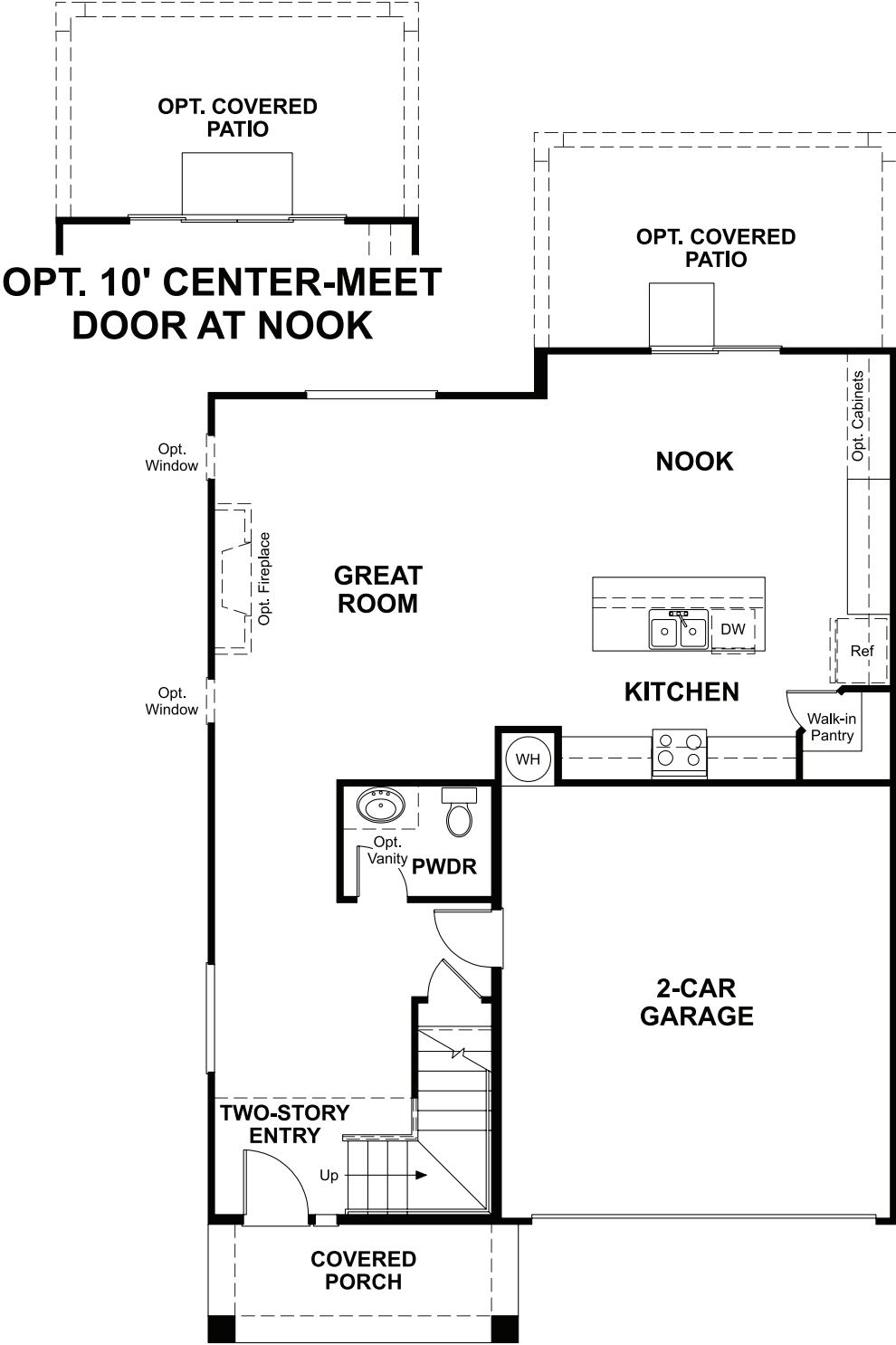
ELEVATION A



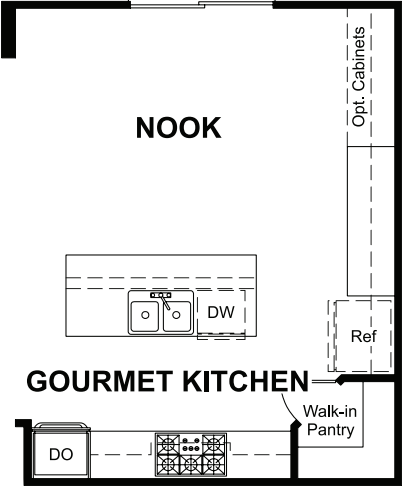
ELEVATION B

MAIN FLOOR

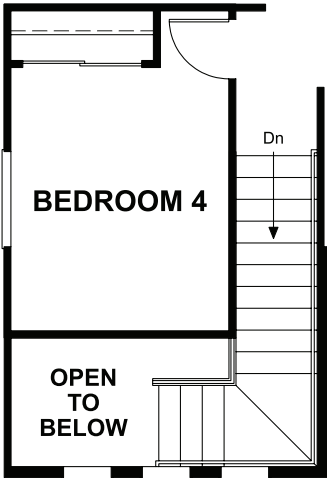
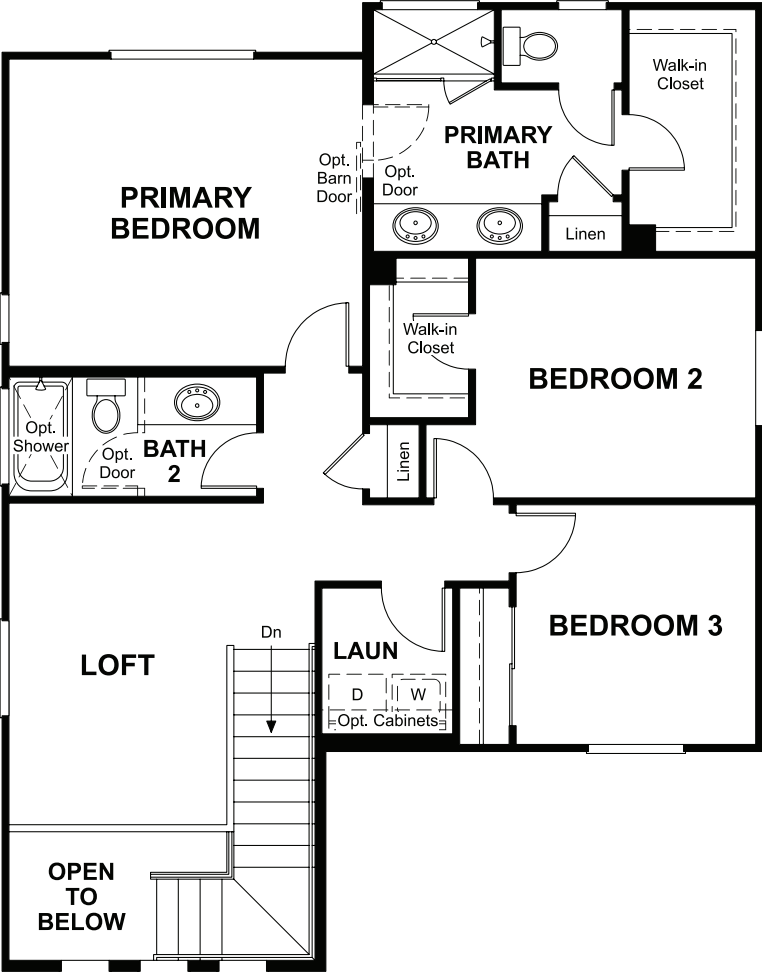
SECOND FLOOR



OPT. DELUXE KITCHEN



OPT. GOURMET KITCHEN



OPT. BEDROOM 4

THIS PLAN'S PROJECTED
HERS® INDEX = 35*
Projected Rating Based on Plans – Field Confirmation required

How does this floor plan rate?
Take a look: **100** = Standard new home+ **130** = Typical resale Home++
The lower number, the better! Refer to the RESNET® HERS index brochure or go to www.RESNET.us and www.HERSindex.com

What's a HERS® Index? HERS stands for Home Energy Rating System, a system created by RESNET® to measure home energy efficiency.^
A Projected HERS index or rating is a computer simulation performed prior to construction by a third-party HERS rater using RESNET-accredited rating software, rated feature and specification data derived from home plans, features and specifications, and other data selected or assumed by the rater. The projected HERS index is approximate and is subject to change without notice. Actual results will vary.