



ELEVATION C

ABOUT THE CARTWRIGHT

Seeking a plan with ample living space and exciting personalization options? Consider the Cartwright! A covered porch entry leads past a study to an open layout with a great room, a dining nook and a large kitchen, complete with an immense walk-in pantry and center island. Personalize the main floor with a bedroom and bath in lieu of the study, gourmet features and an extended island in the kitchen, and a 10' center-meet door at the nook! On the second floor, you'll find an expansive owner's suite with dual walk-in closets and a private bath, showcasing dual sinks, a lavish soaking tub and a shower. An additional bedroom, a laundry, and a loft that can be personalized as a bedroom round out the plan.

COMMUNITY LOCATION:

Preserve at Kessing Ranch | 90 Jagla Street | Cotati, CA 94931 | 707.229.7001

HOME GALLERY LOCATION:

Northern California Home Gallery™ | One Harbor Center, Suite 150 | Suisun City, CA 94585 | 707.416.2800

\*This information is presented for education purposes only. The HERS index for a confirmed rating will be determined by a third-party HERS rater based on data gathered from on-site observations and, if required, testing of rated features for a home as featured, optioned, located, oriented and/or built.

+Standard new home is based on the RESNET® Reference Home definition with a HERS® index of 100 (based on the 2006 International Energy Conservation Code).

++Typical resale home is based on the U.S. Department of Energy definition with a HERS® index of 130.

^RESNET® has developed the HERS® index to indicate the comparative efficiencies of homes. It is no guarantee that energy efficiencies will be achieved.

Floor plans and renderings are conceptual drawings and may vary from actual plans and homes as built. Options and features may not be available on all homes and are subject to change without notice. Actual homes may vary from photos and/or drawings which show upgraded landscaping and may not represent the lowest-priced homes in the community. Features may include optional upgrades and may not be available on all homes. Square footage numbers are approximate and are subject to change without notice. ©2020 Richmond American Homes, Richmond American Homes of Maryland, Inc., California Department of Real Estate – Real Estate Broker, Corporation License Number 01842595. 10/23/2020



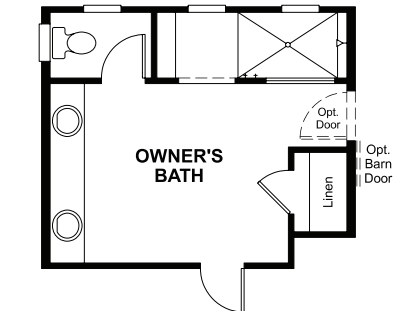
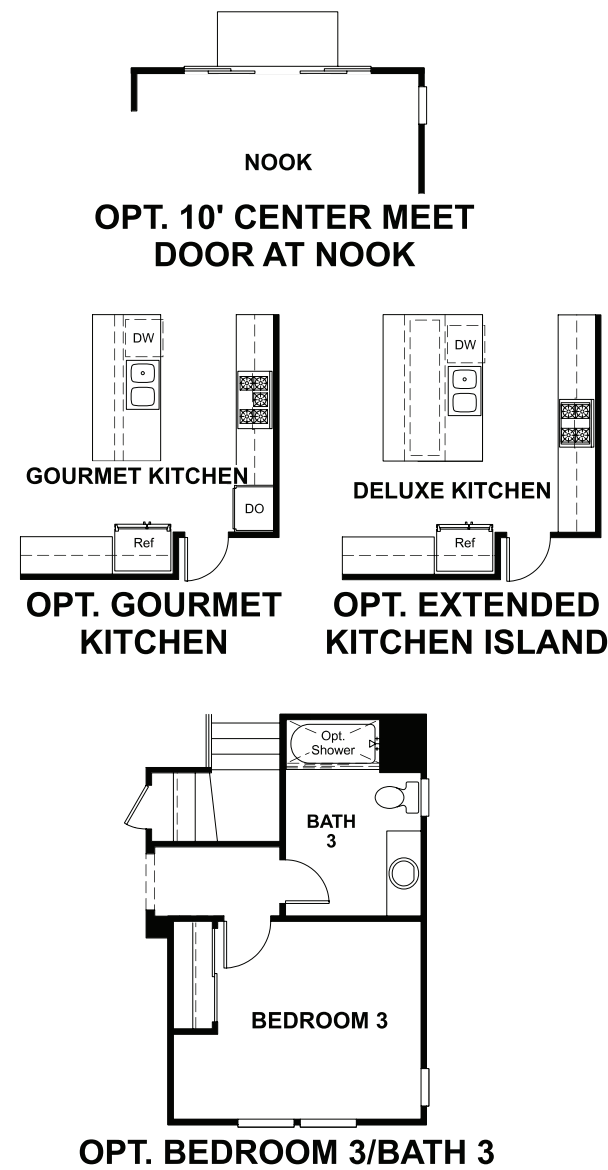
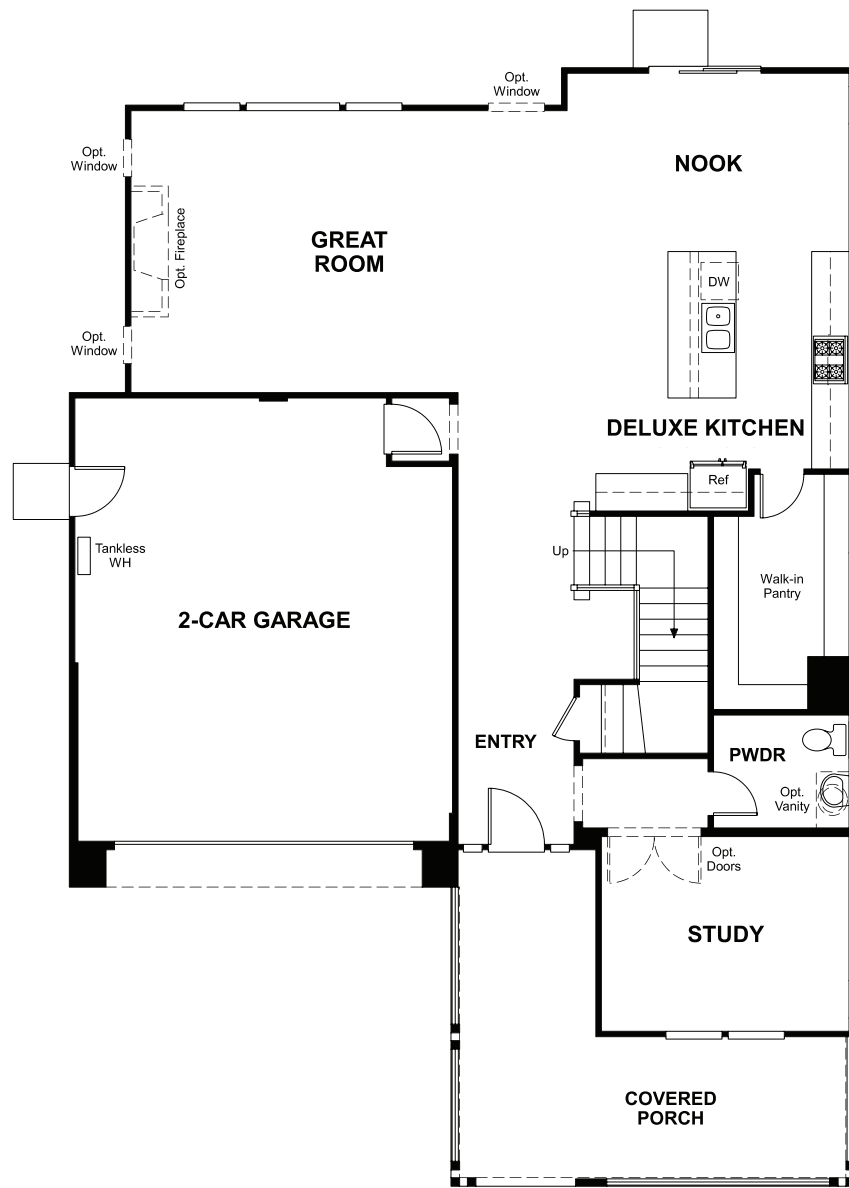
ELEVATION A



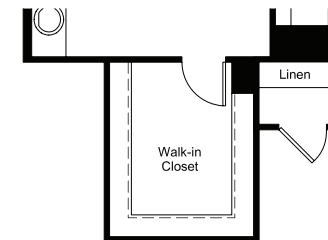
ELEVATION B

MAIN FLOOR

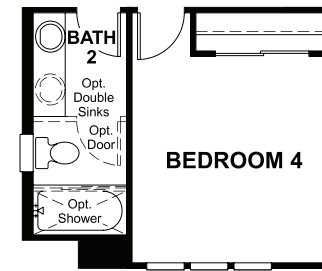
SECOND FLOOR



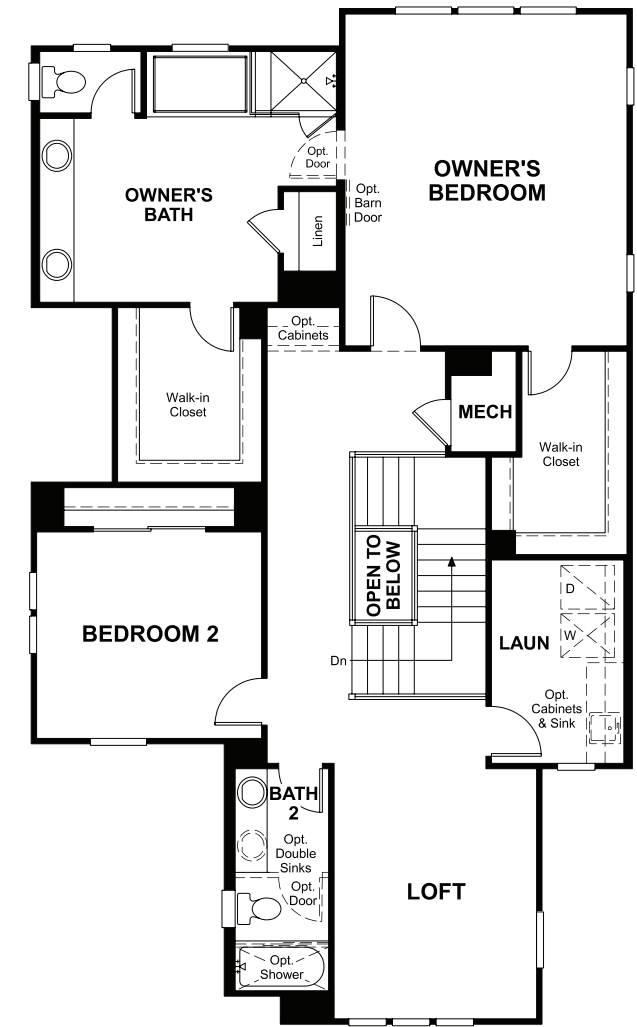
OPT. WALK-IN SHOWER AT OWNER'S BATH



OPT. LINEN CLOSET



OPT. BEDROOM 4



THIS PLAN'S PROJECTED **HERS® INDEX = 42\***  
 Projected Rating Based on Plans – Field Confirmation required

**How does this floor plan rate?**  
 Take a look: **100** = Standard new home+ **130** = Typical resale Home++  
 The lower number, the better! Refer to the RESNET® HERS index brochure or go to [www.RESNET.us](http://www.RESNET.us) and [www.HERSindex.com](http://www.HERSindex.com)

**What's a HERS® Index?** HERS stands for Home Energy Rating System, a system created by RESNET® to measure home energy efficiency. A Projected HERS index or rating is a computer simulation performed prior to construction by a third-party HERS rater using RESNET-accredited rating software, rated feature and specification data derived from home plans, features and specifications, and other data selected or assumed by the rater. The projected HERS index is approximate and is subject to change without notice. Actual results will vary.