

THE HARLEY

Approx. 2,740-3,190 sq. ft. | 3-5 bedrooms | 2.5-5 baths | 2-car + RV garage | Plan #P776



ELEVATION C

ABOUT THE HARLEY

Entertaining is easy in the ranch-style Harley plan, which boasts a well-appointed kitchen with a walk-in pantry, center island and breakfast nook, and an adjacent great room overlooking a relaxing covered patio. A quiet study can be optioned as an extra bedroom or formal dining room, and a spacious master suite with attached bath and walk-in closet is separated from two additional bedrooms for privacy. Both a 2-car garage and an RV garage are included. Personalize this plan with an optional gourmet kitchen, second master bedroom, club room and more!

COMMUNITY LOCATION:

The Estates at Gateway Quarter | 21072 East Sparrow Drive | Queen Creek, AZ 85142 | **480.988.7157**

HOME GALLERY LOCATION:

Phoenix Home Gallery™ | 16427 North Scottsdale Road, Suite 175 | Scottsdale, AZ 85254 | **877.444.1485** **Select Opt. 3**

*This information is presented for education purposes only. The HERS index for a confirmed rating will be determined by a third-party HERS rater based on data gathered from on-site observations and, if required, testing of rated features for a home as featured, optioned, located, oriented and/or built.

+Standard new home is based on the RESNET® Reference Home definition with a HERS® index of 100 (based on the 2006 International Energy Conservation Code).

++Typical resale home is based on the U.S. Department of Energy definition with a HERS® index of 130.

^RESNET® has developed the HERS® index to indicate the comparative efficiencies of homes. It is no guarantee that energy efficiencies will be achieved.



Floor plans and renderings are conceptual drawings and may vary from actual plans and homes as built. Options and features may not be available on all homes and are subject to change without notice. Actual homes may vary from photos and/or drawings which show upgraded landscaping and may not represent the lowest-priced homes in the community. Features may include optional upgrades and may not be available on all homes. Square footage numbers are approximate and are subject to change without notice. Prices, specifications and availability subject to change without notice. ©2020 Richmond American Homes, Richmond American Homes of Arizona, Inc. (a public report is available on the state real estate department's website), Richmond American Construction, Inc. ROC #206612. 7/7/2020

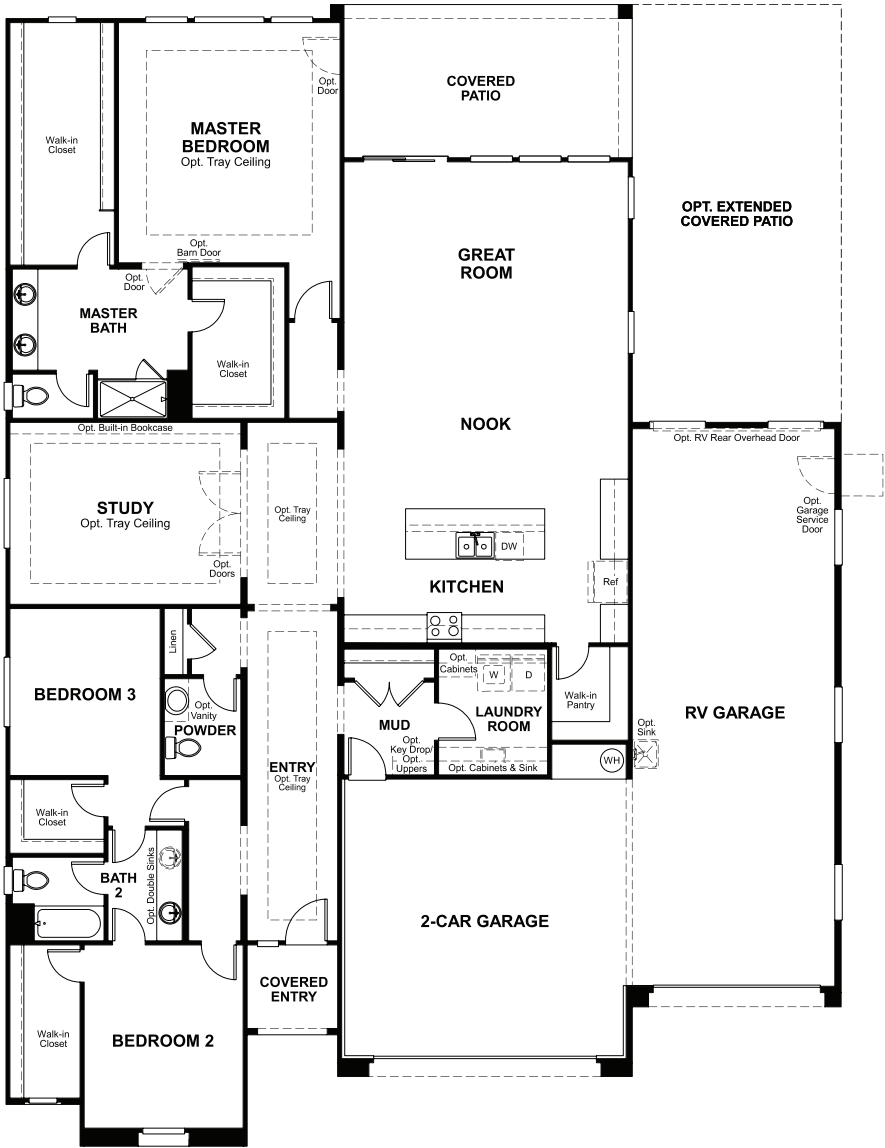


ELEVATION A

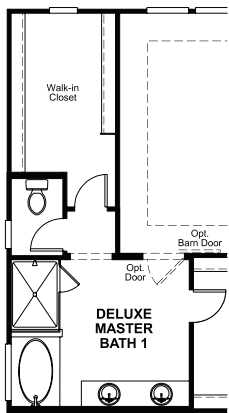


ELEVATION B

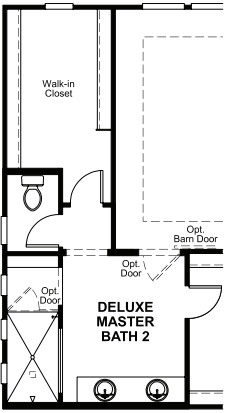
MAIN FLOOR



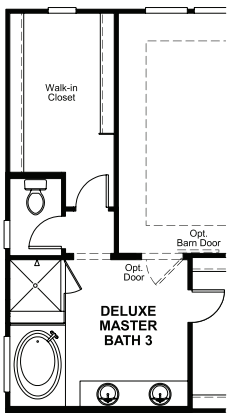
MAIN FLOOR OPTIONS



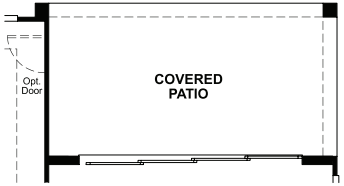
OPT. DELUXE MASTER BATH #1



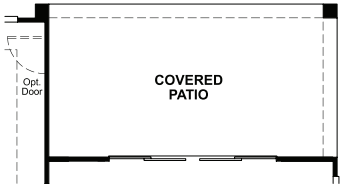
OPT. DELUXE MASTER BATH #2



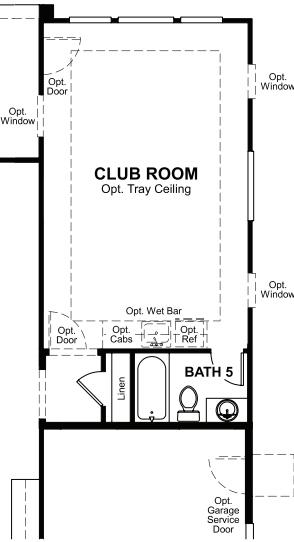
OPT. DELUXE MASTER BATH #3



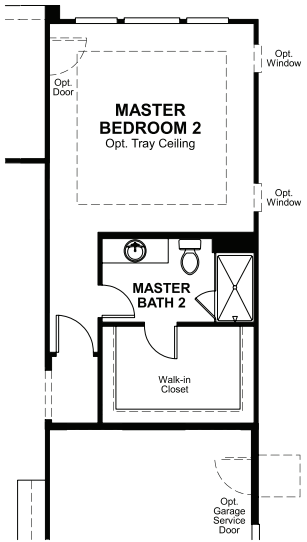
OPT. MULTI-SLIDE AT GREAT ROOM



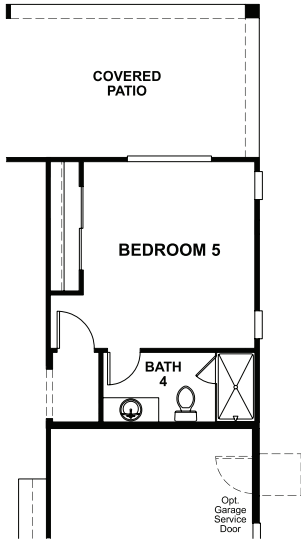
OPT. CENTER-MEET AT GREAT ROOM



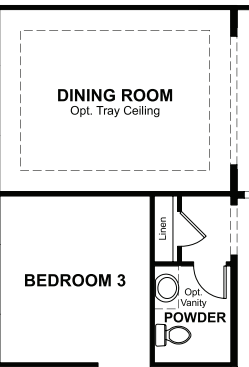
OPT. CLUB ROOM



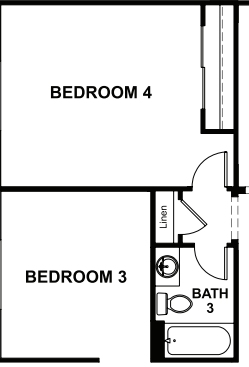
OPT. MASTER BEDROOM 2



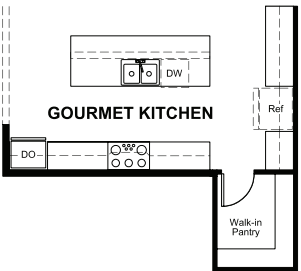
OPT. BEDROOM 5/BATH 4



OPT. DINING ROOM



OPT. BEDROOM 4 W/ BATH 3



OPT. GOURMET KITCHEN

THIS PLAN'S PROJECTED
HERS® INDEX = 57*
Projected Rating Based on Plans – Field Confirmation required

How does this floor plan rate?
Take a look: **100** = Standard new home+ **130** = Typical resale Home++
The lower number, the better! Refer to the RESNET® HERS index brochure or go to www.RESNET.us and www.HERSindex.com

What's a HERS® Index? HERS stands for Home Energy Rating System, a system created by RESNET® to measure home energy efficiency.^
A Projected HERS index or rating is a computer simulation performed prior to construction by a third-party HERS rater using RESNET-accredited rating software, rated feature and specification data derived from home plans, features and specifications, and other data selected or assumed by the rater. The projected HERS index is approximate and is subject to change without notice. Actual results will vary.