



ELEVATION C

ABOUT THE CORONADO

The main floor of the Coronado floor plan provides spaces for working and entertaining. Just off the entry are a study and a powder room. At the back of the home, enjoy a great room, an open dining room and a gourmet kitchen, complete with center island and walk-in pantry off the mudroom. Upstairs, discover a convenient laundry, a generous loft and three inviting bedrooms, including a relaxing master suite with an attached bath and expansive walk-in closet. Add up to two additional bedrooms, a morning room and a covered patio!

COMMUNITY LOCATION:

Hartford | Hualapai Way and Serene Avenue | Las Vegas, NV 89178 | 702.638.4440

HOME GALLERY LOCATION:

Las Vegas Home Gallery™ | 7770 South Dean Martin Drive, Suite 309 | Las Vegas, NV 89139 | 702.617.8400

*This information is presented for education purposes only. The HERS index for a confirmed rating will be determined by a third-party HERS rater based on data gathered from on-site observations and, if required, testing of rated features for a home as featured, optioned, located, oriented and/or built.

+Standard new home is based on the RESNET® Reference Home definition with a HERS® index of 100 (based on the 2006 International Energy Conservation Code).

++Typical resale home is based on the U.S. Department of Energy definition with a HERS® index of 130.

^RESNET® has developed the HERS® index to indicate the comparative efficiencies of homes. It is no guarantee that energy efficiencies will be achieved.

Floor plans and renderings are conceptual drawings and may vary from actual plans and homes as built. Options and features may not be available on all homes and are subject to change without notice. Actual homes may vary from photos and/or drawings which show upgraded landscaping and may not represent the lowest-priced homes in the community. Features may include optional upgrades and may not be available on all homes. Square footage numbers are approximate and are subject to change without notice. ©2020 Richmond American Homes. In Nevada, homes are offered by Richmond American Homes of Nevada, Inc. (Nevada Contractor License #0026417.) 5/1/2020



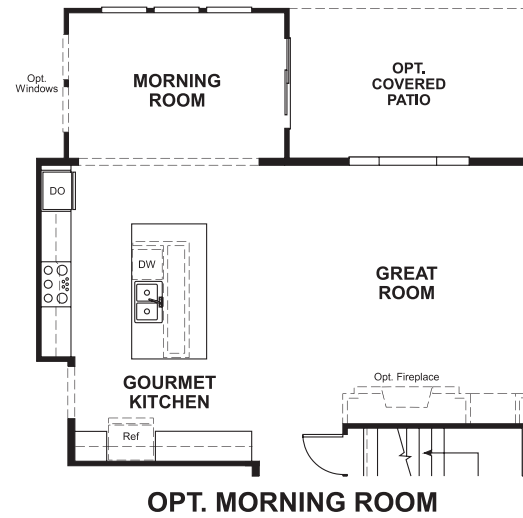
ELEVATION A



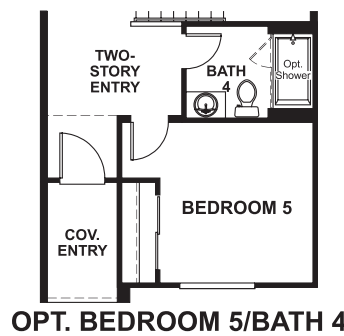
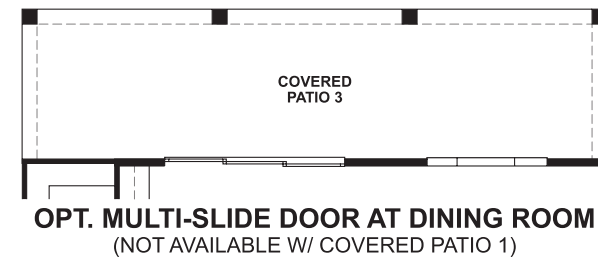
ELEVATION B

MAIN FLOOR

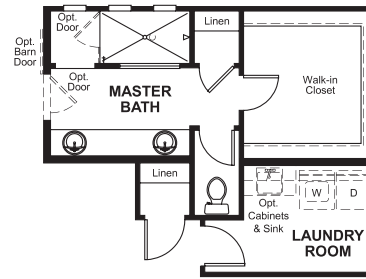
SECOND FLOOR



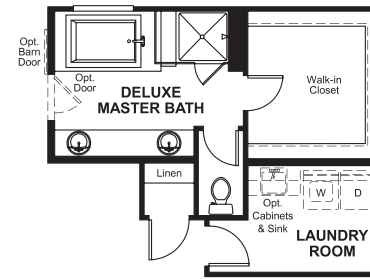
OPT. MORNING ROOM



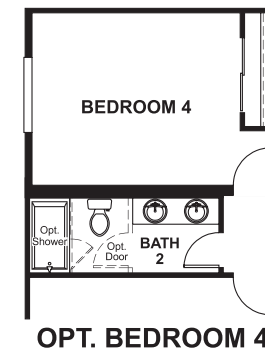
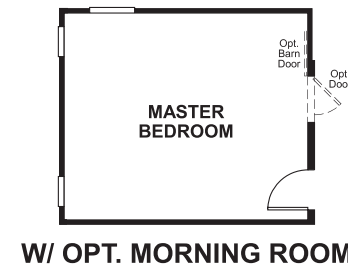
OPT. BEDROOM 5/BATH 4



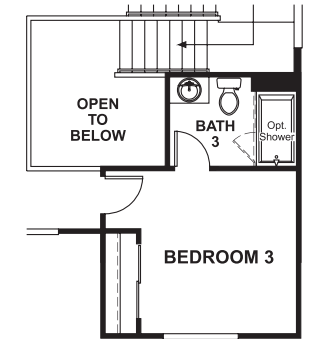
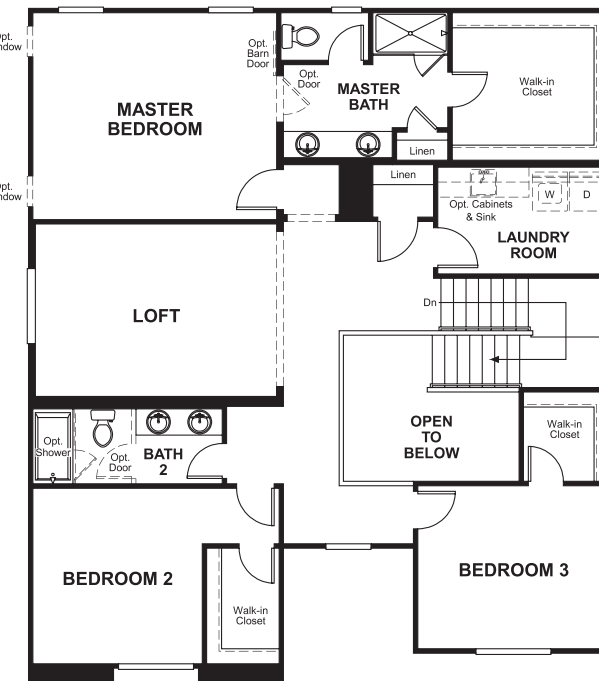
OPT. MASTER BATH WALK-IN SHOWER



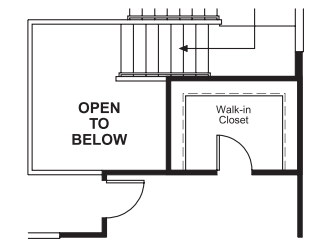
OPT. DELUXE MASTER BATH



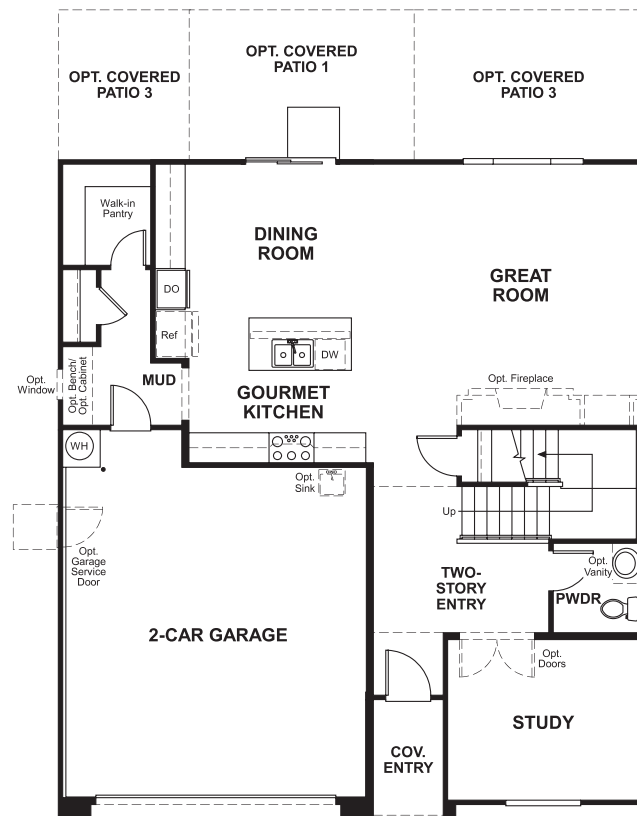
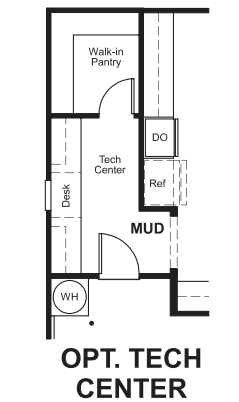
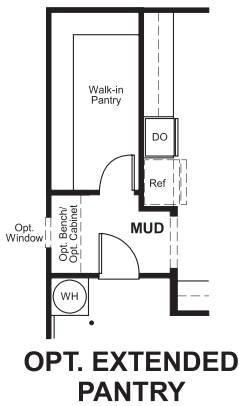
OPT. BEDROOM 4



OPT. BATH 3 AT BEDROOM 3
(ONLY AVAILABLE W/ BEDROOM 5/BATH 4)



W/ OPT. BEDROOM 5/BATH 4



THIS PLAN'S PROJECTED
HERS® INDEX = 60*
Projected Rating Based on Plans – Field Confirmation required

How does this floor plan rate?
Take a look: 100 = Standard new home+ 130 = Typical resale Home++
The lower number, the better! Refer to the RESNET® HERS index brochure or go to www.RESNET.us and www.HERSindex.com

What's a HERS® Index? HERS stands for Home Energy Rating System, a system created by RESNET® to measure home energy efficiency. A Projected HERS index or rating is a computer simulation performed prior to construction by a third-party HERS rater using RESNET-accredited rating software, rated feature and specification data derived from home plans, features and specifications, and other data selected or assumed by the rater. The projected HERS index is approximate and is subject to change without notice. Actual results will vary.