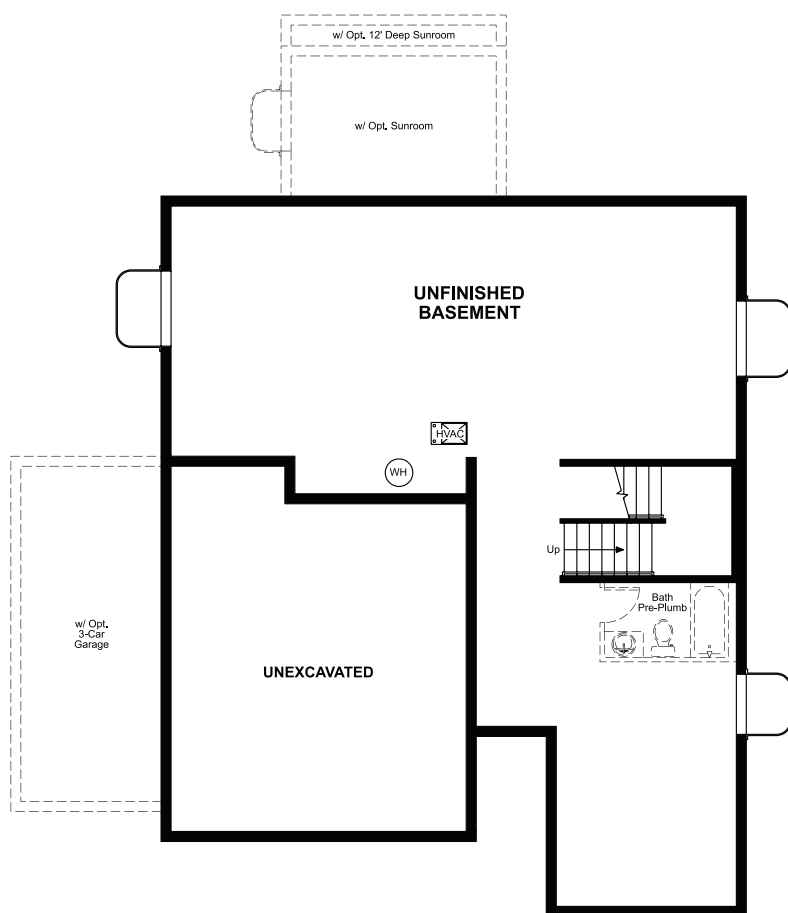


BASEMENT



ELEVATION C

ABOUT THE CORONADO

The main floor of the Coronado floor plan provides spaces for working, living and entertaining. Just off the airy two-story entry, either a study and powder room or a bedroom and full bath offer added convenience. At the heart of the home, discover a relaxing great room, a dining room and a smartly planned kitchen, complete with a center island and a roomy walk-in pantry. Two bedrooms, a shared bath, a laundry and a stunning primary suite boasting a walk-in closet and a private bath are located upstairs. Additional features may include a gourmet kitchen, a sunroom, a deluxe primary bath, either a loft or an extra bedroom, an attached bath at one of the secondary bedrooms, and/or a covered patio.



ELEVATION A



ELEVATION B

COMMUNITY LOCATION:

Independence | 1077 East Witherspoon Drive | Elizabeth, CO 80107 | 303.255.6042



Floor plans and renderings are conceptual drawings and may vary from actual plans and homes as built. Options and features may not be available on all homes and are subject to change without notice. Actual homes may vary from photos and/or drawings which show upgraded landscaping and may not represent the lowest-priced homes in the community. Features may include optional upgrades and may not be available on all homes. Prices, specifications and availability are subject to change without notice. Square footage is approximate and subject to change without notice. ©2025 Richmond American Homes, Richmond American Homes of Colorado, Inc. 01/02/25

MAIN FLOOR

SECOND FLOOR

