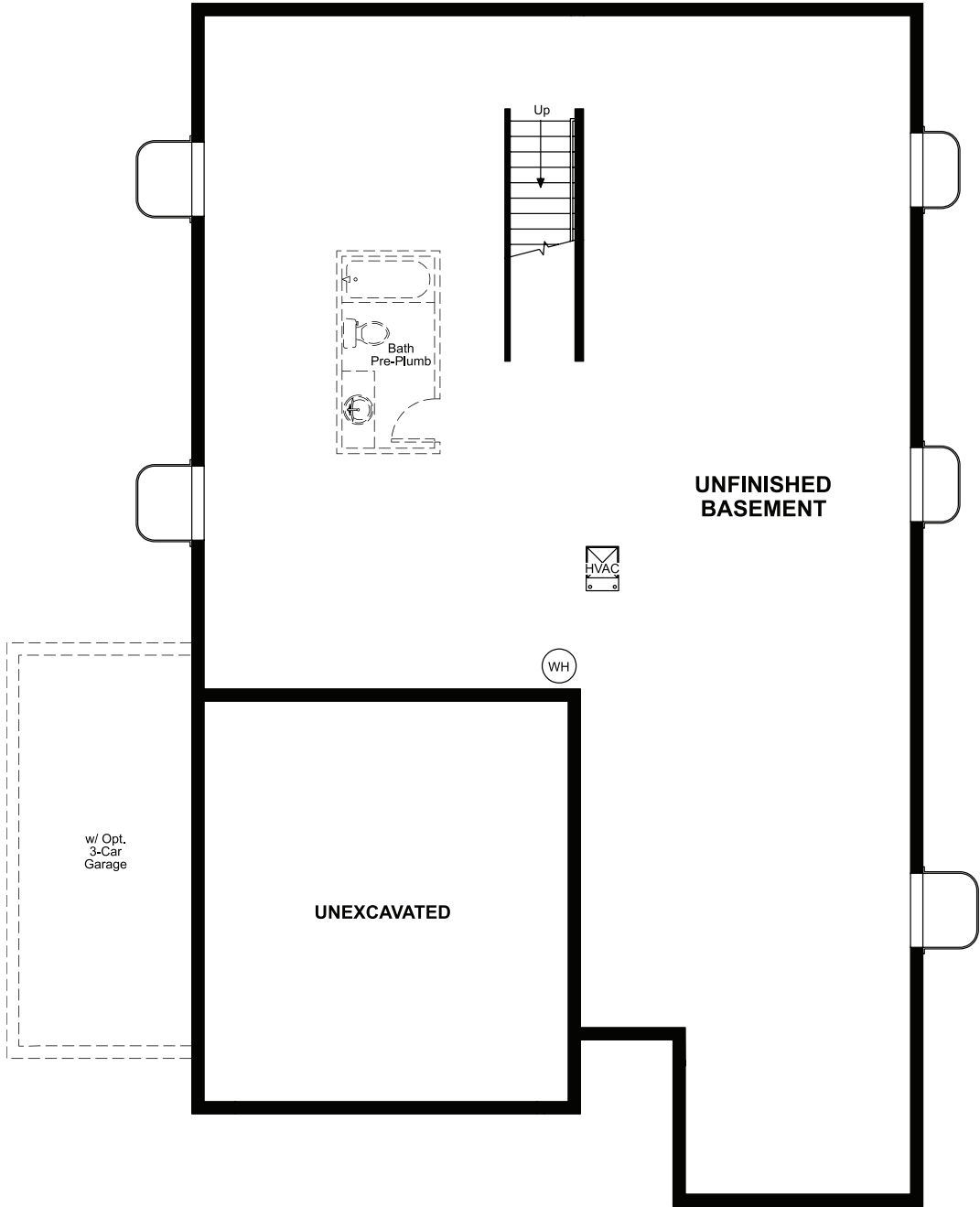


BASEMENT



ELEVATION C

ABOUT THE ARLINGTON

Looking for a ranch-style floor plan? Put the Arlington at the top of your list! This impressive home offers an open layout with a generous great room, a dining room and a well-appointed kitchen. You'll also appreciate three inviting bedrooms, including a luxurious primary suite showcasing an oversized walk-in closet and a private bath. Conveniences like a mudroom, laundry room, broad kitchen island and unfinished basement add to the plan's single-floor appeal. Additional features may include a gourmet kitchen, a deluxe primary bath and/or a tranquil covered patio.




ELEVATION A



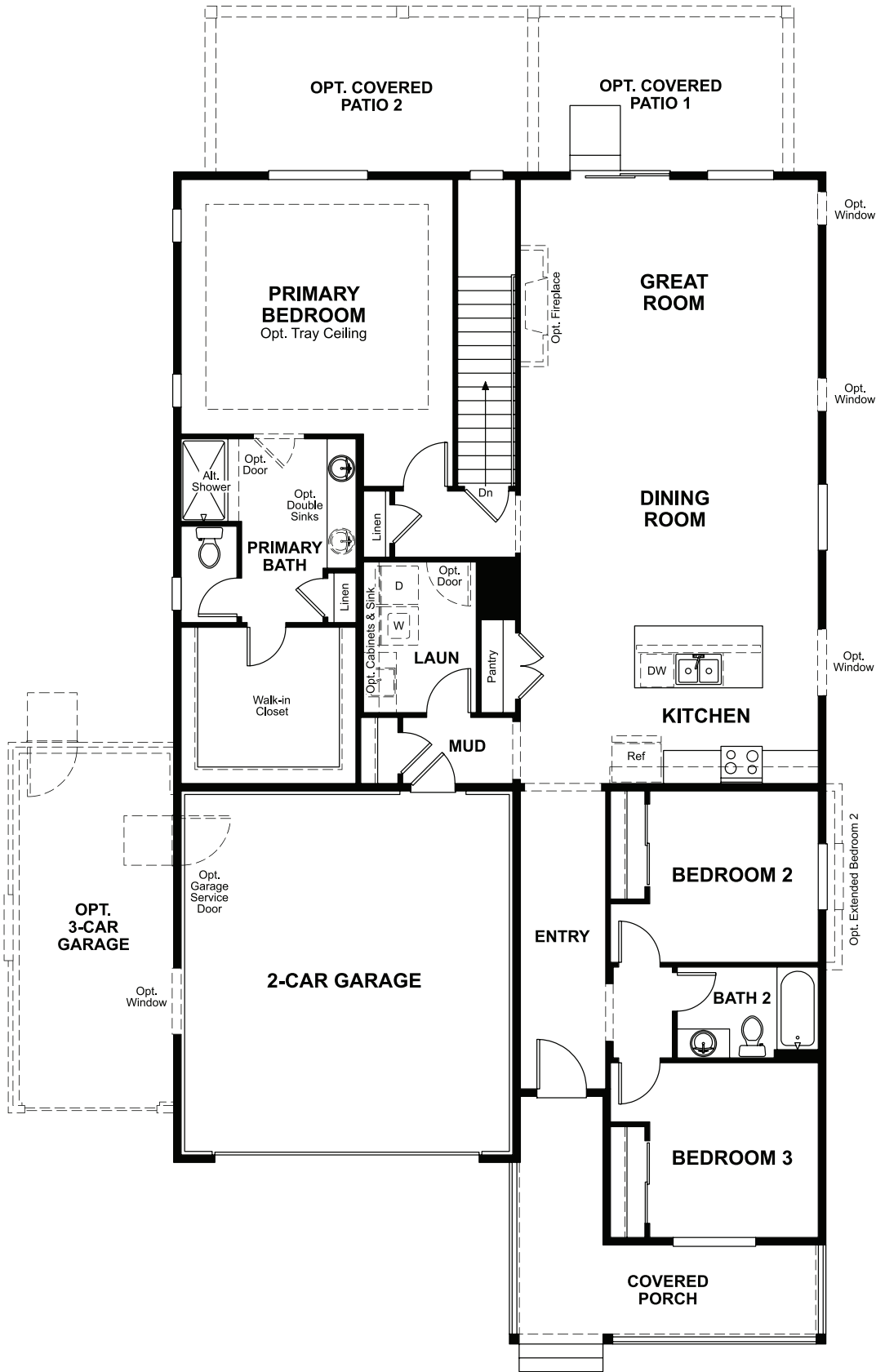
ELEVATION B

COMMUNITY LOCATION:

Independence | 1077 East Witherspoon Drive | Elizabeth, CO 80107 | 303.255.6042

 Floor plans and renderings are conceptual drawings and may vary from actual plans and homes as built. Options and features may not be available on all homes and are subject to change without notice. Actual homes may vary from photos and/or drawings which show upgraded landscaping and may not represent the lowest-priced homes in the community. Features may include optional upgrades and may not be available on all homes. Prices, specifications and availability are subject to change without notice. Square footage is approximate and subject to change without notice. ©2025 Richmond American Homes, Richmond American Homes of Colorado, Inc. 01/02/25

MAIN FLOOR



MAIN-FLOOR OPTIONS

