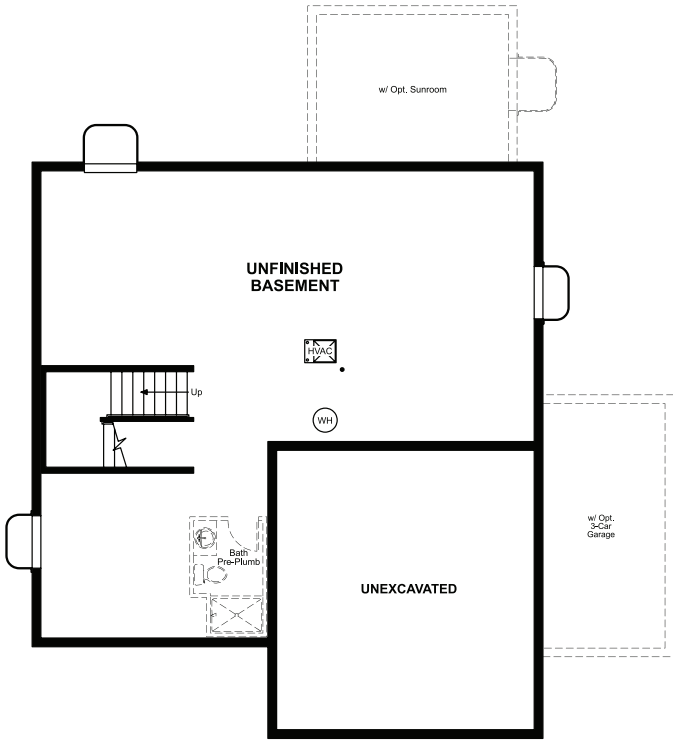


BASEMENT



ELEVATION C

ABOUT THE HEMINGWAY

The main floor of the distinctive Hemingway plan features a versatile flex space, an open great room and a large kitchen with a center island and a walk-in pantry. Upstairs, you'll find three secondary bedrooms, a shared bath, a beautiful primary suite with a private bath and generous walk-in closet, and either a loft or an extra bedroom. Convenient laundry and powder rooms complete this plan. Select homes may include a gourmet kitchen, a charming sunroom, a deluxe primary bath, an attached bath at one of the secondary bedrooms, and/or a covered patio.

COMMUNITY LOCATION:

Independence | 1077 East Witherspoon Drive | Elizabeth, CO 80107 | 303.255.6042



Floor plans and renderings are conceptual drawings and may vary from actual plans and homes as built. Options and features may not be available on all homes and are subject to change without notice. Actual homes may vary from photos and/or drawings which show upgraded landscaping and may not represent the lowest-priced homes in the community. Features may include optional upgrades and may not be available on all homes. Prices, specifications and availability are subject to change without notice. Square footage is approximate and subject to change without notice. ©2025 Richmond American Homes, Richmond American Homes of Colorado, Inc. 01/02/25



ELEVATION A



ELEVATION B

MAIN FLOOR

SECOND FLOOR

