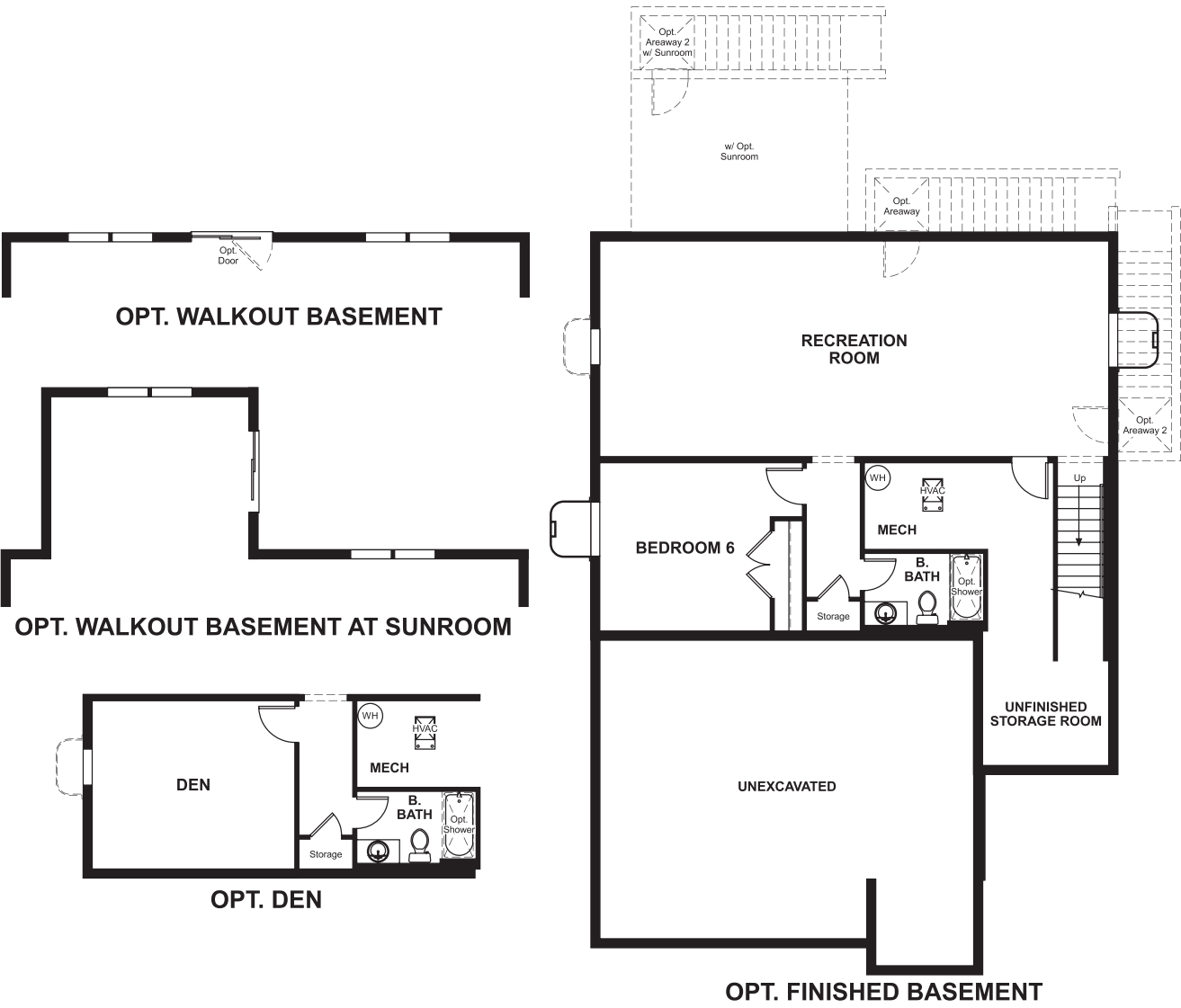


BASEMENT



ELEVATION D

ABOUT THE YELLOWSTONE

The Yellowstone offers ample space and personalization options to meet your needs. Main-floor highlights include a charming covered porch, a private study, a generous great room with an optional fireplace, and an open kitchen with a walk-in pantry, center island and adjacent dining space. If desired, you can also add a covered patio off the kitchen. Bedrooms are located upstairs, including a lavish master suite with a roomy walk-in closet and private bath. In addition, a versatile loft provides access to a convenient laundry room. Completing the floor plan, a basement offers the choice to add a rec room, a walkout patio, and an extra bedroom and bathroom. Other personalization options: gourmet kitchen, sunroom, bedroom in lieu of the study, deluxe master bath, laundry sink and cabinets, mudroom key drop.

COMMUNITY LOCATION:

Two Rivers | 2690 Orchard Oriole Way | Odenton, MD 21113 | 410.312.2829

HOME GALLERY LOCATION:

Virginia Home Gallery™ | 11393 Government Center Parkway | Fairfax, VA 22030 | 703.349.7381

*This information is presented for education purposes only. The HERS index for a confirmed rating will be determined by a third-party HERS rater based on data gathered from on-site observations and, if required, testing of rated features for a home as featured, optioned, located, oriented and/or built.
+Standard new home is based on the RESNET® Reference Home definition with a HERS® index of 100 (based on the 2006 International Energy Conservation Code).
++Typical resale home is based on the U.S. Department of Energy definition with a HERS® index of 130.
^RESNET® has developed the HERS® index to indicate the comparative efficiencies of homes. It is no guarantee that energy efficiencies will be achieved.
Floor plans and renderings are conceptual drawings and may vary from actual plans and homes as built. Options and features may not be available on all homes and are subject to change without notice. Actual homes may vary from photos and/or drawings which show upgraded landscaping and may not represent the lowest-priced homes in the community. Features may include optional upgrades and may not be available on all homes. Square footage numbers are approximate and are subject to change without notice. ©2020 Richmond American Homes, Richmond American Homes of Maryland, Inc., MHBR #299. ©2020 Richmond American Homes, Richmond American Homes of Virginia, Inc. 5/4/2020



ELEVATION A



ELEVATION B



ELEVATION C



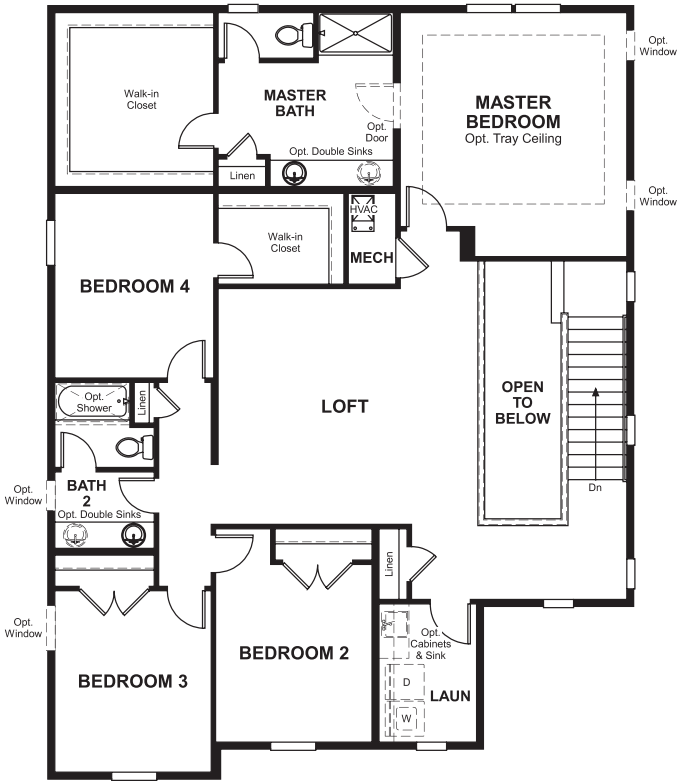
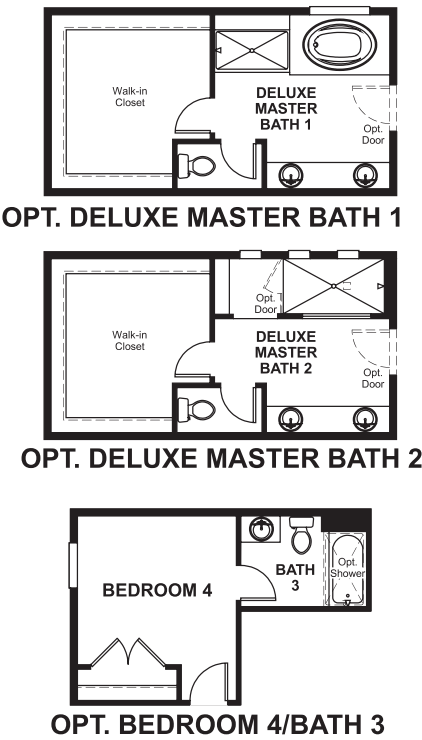
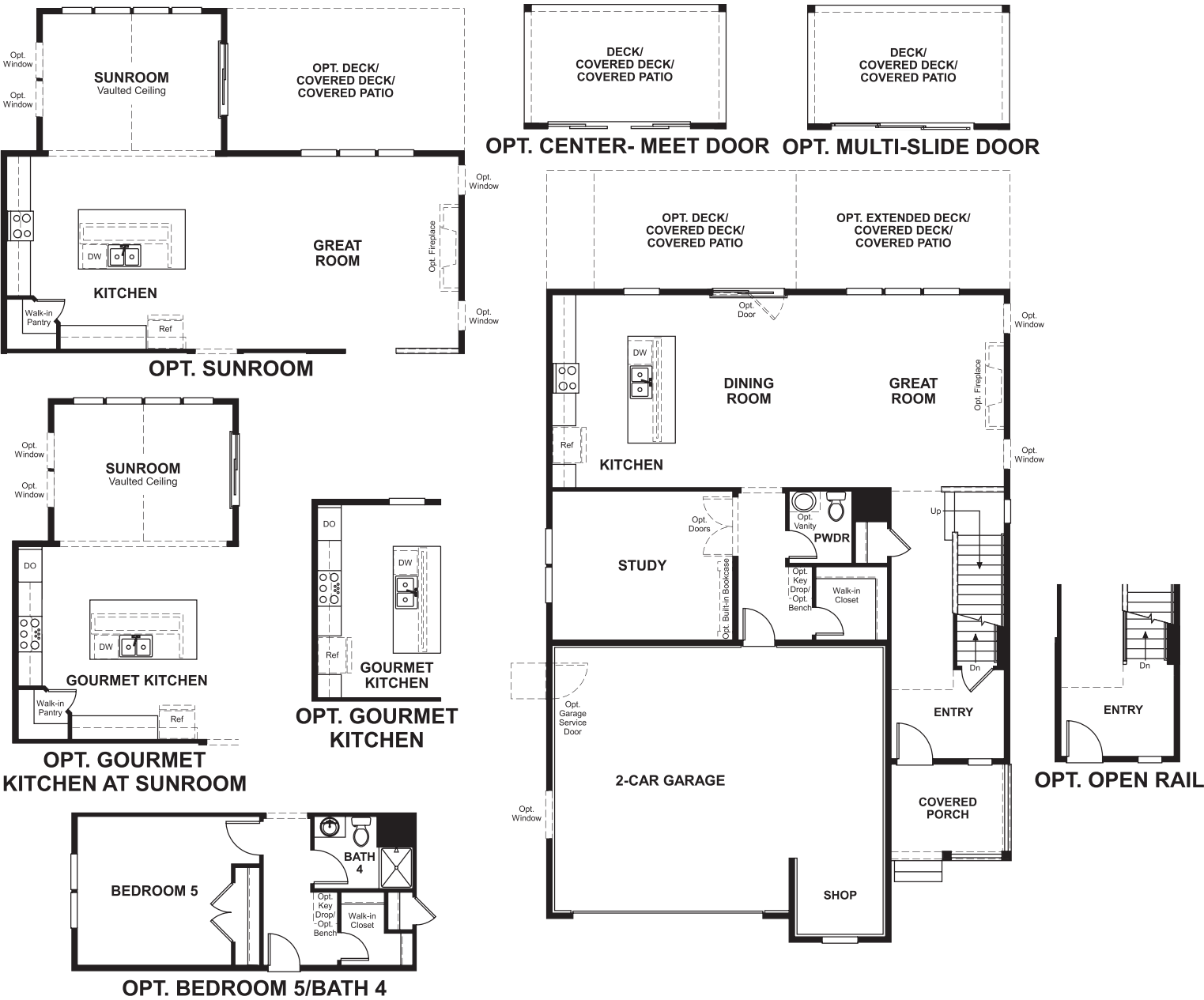
ELEVATION E



ELEVATION F

MAIN FLOOR

SECOND FLOOR



THIS PLAN'S PROJECTED
HERS® INDEX = 74*
Projected Rating Based on Plans – Field Confirmation required

How does this floor plan rate?
Take a look: **100** = Standard new home+ **130** = Typical resale Home++
The lower number, the better! Refer to the RESNET® HERS index brochure or go to www.RESNET.us and www.HERSindex.com

What's a HERS® Index? HERS stands for Home Energy Rating System, a system created by RESNET® to measure home energy efficiency.^\nA Projected HERS index or rating is a computer simulation performed prior to construction by a third-party HERS rater using RESNET-accredited rating software, rated feature and specification data derived from home plans, features and specifications, and other data selected or assumed by the rater. The projected HERS index is approximate and is subject to change without notice. Actual results will vary.