

# THE DARIUS

Approx. 2,860 sq. ft. | 1 story | 4 bedrooms | 3-car garage | Plan #J786



ELEVATION M

## ABOUT THE DARIUS

With its open layout and versatile options, the ranch-style Darius plan is sure to impress. This home features a spacious great room, nook and adjacent kitchen with gourmet options available. You'll also appreciate two charming bedrooms, one with a walk-in closet, that are connected by a jack-and-jill bath. As part of our Modern Living™ collection, you can choose a separated suite complete with bedroom, private bath and living area with optional entry. The space can also be built as a larger master suite and club room instead. Also included are a laundry room, powder room, mudroom, 3-car garage, covered patio and a study, which can be optioned as a formal dining room.

### HOME GALLERY LOCATION:


Jacksonville Home Gallery™ | 10255 Fortune Parkway, Suite 150 | Jacksonville, FL 32256 | **904.541.2555**

\*This information is presented for education purposes only. The HERS index for a confirmed rating will be determined by a third-party HERS rater based on data gathered from on-site observations and, if required, testing of rated features for a home as featured, optioned, located, oriented and/or built.

+Standard new home is based on the RESNET® Reference Home definition with a HERS® index of 100 (based on the 2006 International Energy Conservation Code).

++Typical resale home is based on the U.S. Department of Energy definition with a HERS® index of 130.

^RESNET® has developed the HERS® index to indicate the comparative efficiencies of homes. It is no guarantee that energy efficiencies will be achieved.



Floor plans and renderings are conceptual drawings and may vary from actual plans and homes as built. Options and features may not be available on all homes and are subject to change without notice. Actual homes may vary from photos and/or drawings which show upgraded landscaping and may not represent the lowest-priced homes in the community. Features may include optional upgrades and may not be available on all homes. Square footage numbers are approximate and are subject to change without notice. Prices, specifications and availability subject to change without notice. ©2019 Richmond American Homes, Richmond American Homes of Florida, LP, CBC1257429 11/19/2019



ELEVATION K

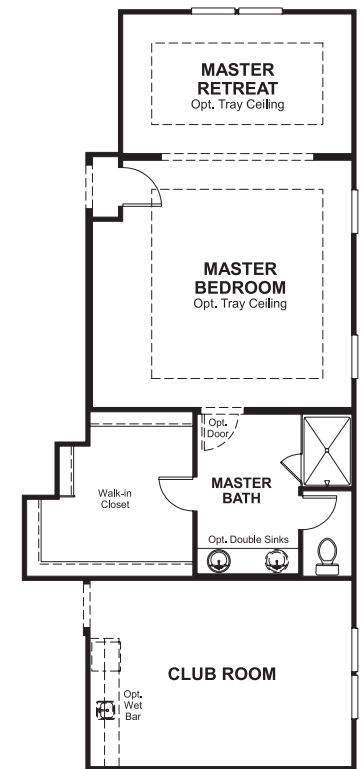
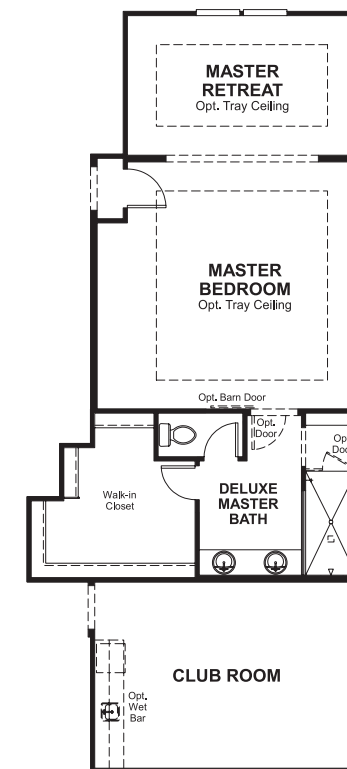
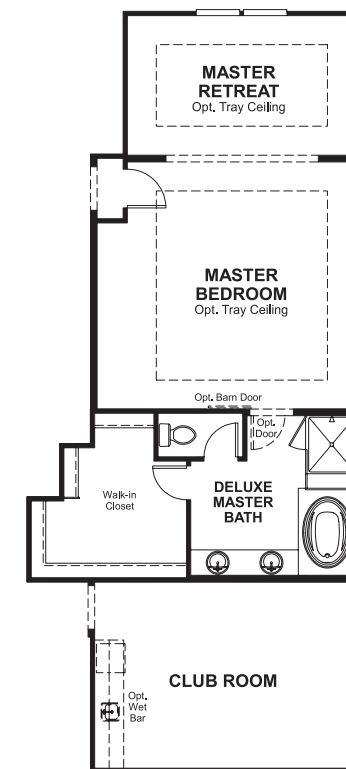
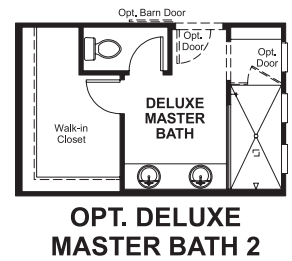
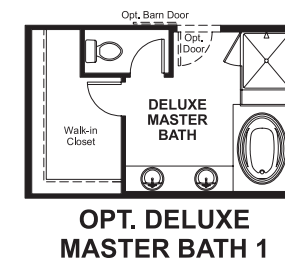
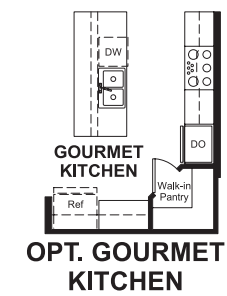
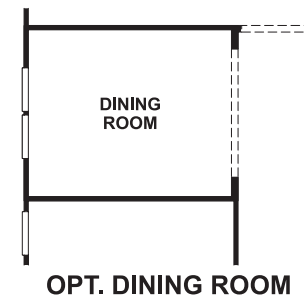
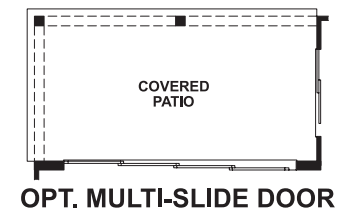
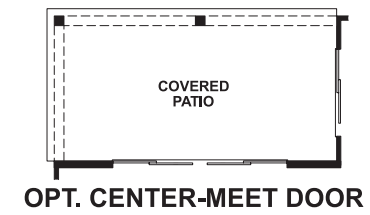
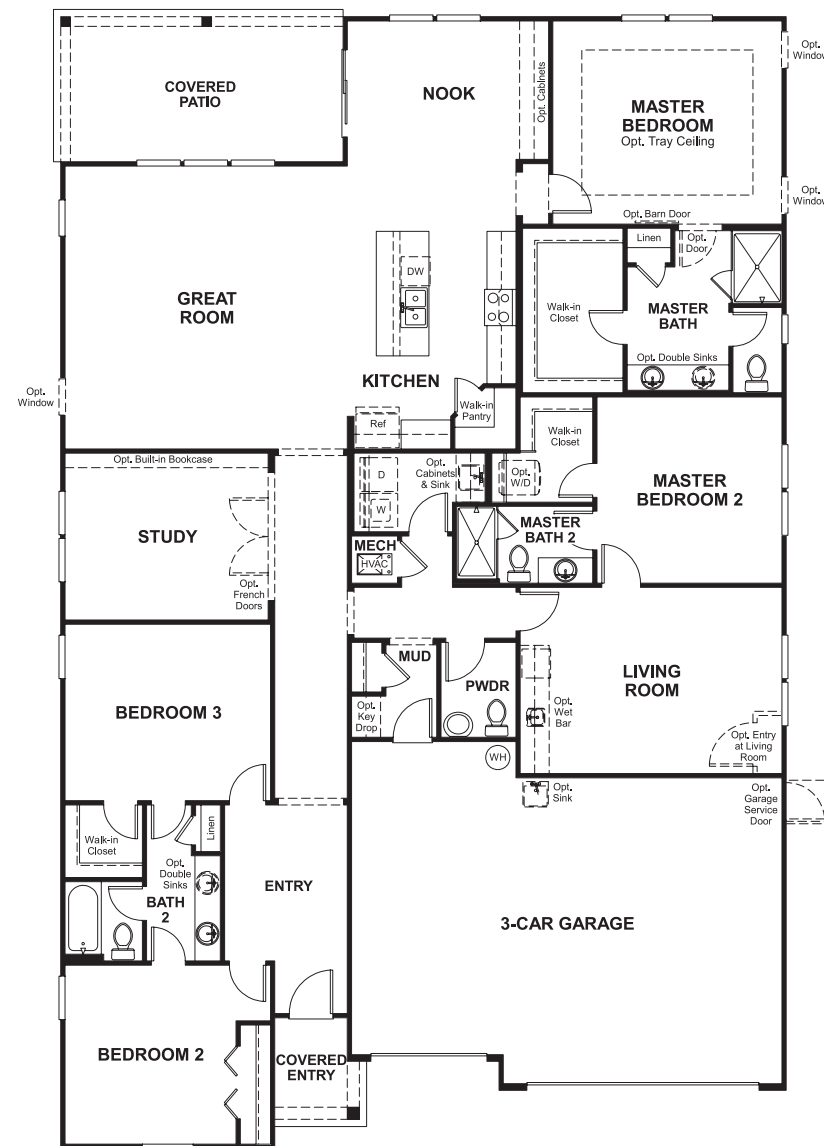


ELEVATION L



## MAIN FLOOR

## MAIN FLOOR OPTIONS



THIS PLAN'S PROJECTED  
**HERS® INDEX = 62\***  
Projected Rating Based on Plans – Field Confirmation required

### How does this floor plan rate?

Take a look: **100** = Standard new home+ **130** = Typical resale Home++  
The lower number, the better! Refer to the RESNET® HERS index brochure or  
go to **www.RESNET.us** and **www.HERSindex.com**

**What's a HERS® Index?** *HERS stands for Home Energy Rating System, a system created by RESNET® to measure home energy efficiency.<sup>^</sup>*

A Projected HERS index or rating is a computer simulation performed prior to construction by a third-party HERS rater using RESNET-accredited rating software, rated feature and specification data derived from home plans, features and specifications, and other data selected or assumed by the rater. The projected HERS index is approximate and is subject to change without notice. Actual results will vary.