



ELEVATION C

ABOUT THE ALAN II

At the heart of the ranch-style Alan II plan is an open layout with a great room, a nook and a kitchen with a center island. A formal dining room is adjacent. The impressive owner's suite offers a large walk-in closet and an attached bath, complete with dual sinks, a shower and a separate soaking tub. A private study, two additional bedrooms, a bath, a laundry and a powder room round out the residence. Personalize this floor plan with deluxe or gourmet features in the kitchen, or a walk-in shower at the owner's bath. You can also choose a fourth bedroom and third bath in place of the study and the powder room, a suite in lieu of the second and third bedrooms, or one of two patio options.

COMMUNITY LOCATION:

Revere at Independence | 221 Livingston Court | Lincoln, CA 95648 | 916.512.2000

HOME GALLERY LOCATION:

Northern California Home Gallery™ | One Harbor Center, Suite 150 | Suisun City, CA 94585 | 707.416.2800

\*This information is presented for education purposes only. The HERS index for a confirmed rating will be determined by a third-party HERS rater based on data gathered from on-site observations and, if required, testing of rated features for a home as featured, optioned, located, oriented and/or built.

+Standard new home is based on the RESNET® Reference Home definition with a HERS® index of 100 (based on the 2006 International Energy Conservation Code).

++Typical resale home is based on the U.S. Department of Energy definition with a HERS® index of 130.

^RESNET® has developed the HERS® index to indicate the comparative efficiencies of homes. It is no guarantee that energy efficiencies will be achieved.

Floor plans and renderings are conceptual drawings and may vary from actual plans and homes as built. Options and features may not be available on all homes and are subject to change without notice. Actual homes may vary from photos and/or drawings which show upgraded landscaping and may not represent the lowest-priced homes in the community. Features may include optional upgrades and may not be available on all homes. Square footage numbers are approximate and are subject to change without notice. ©2021 Richmond American Homes, Richmond American Homes of Maryland, Inc., California Department of Real Estate – Real Estate Broker, Corporation License Number 01842595. 1/13/2021

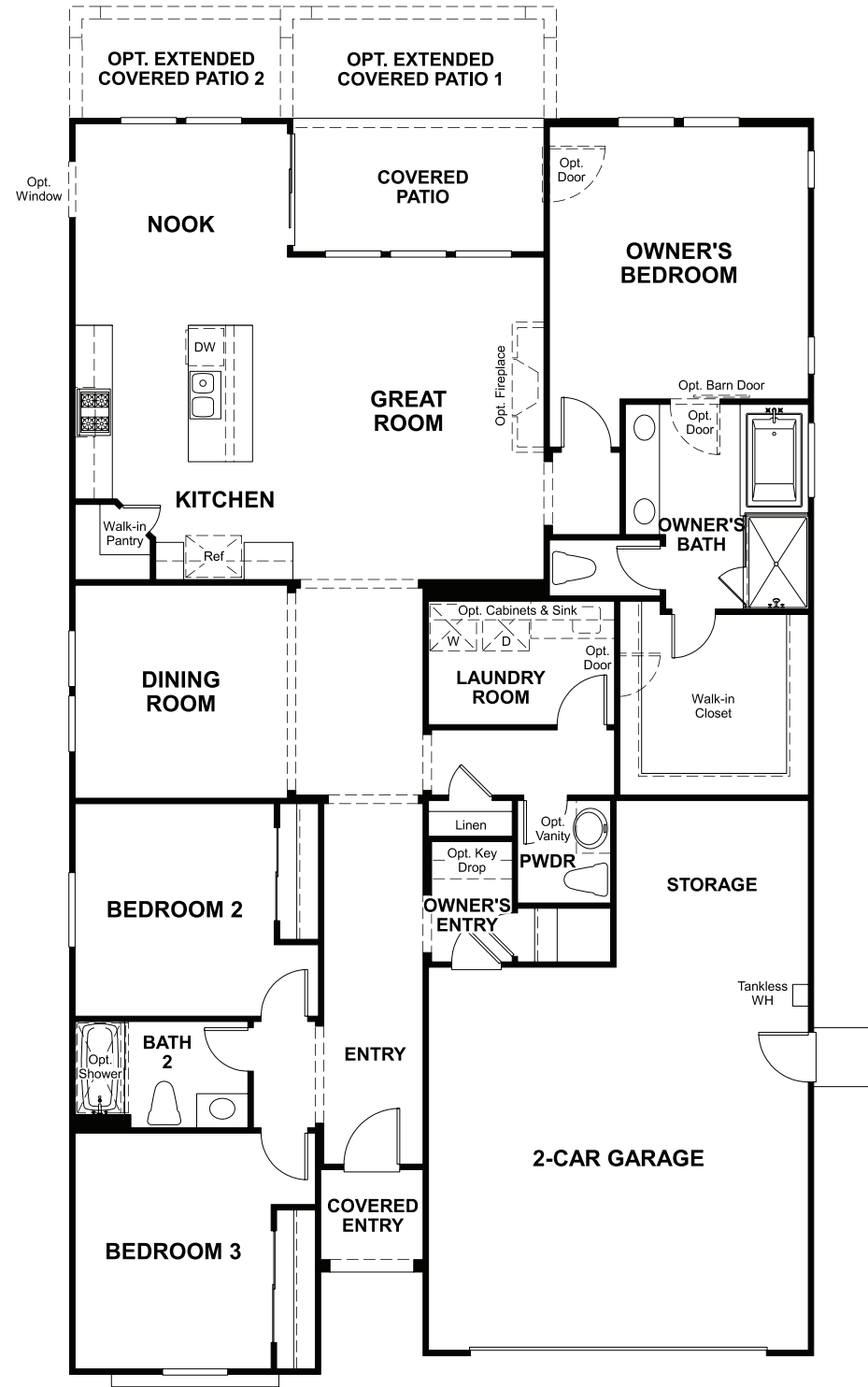


ELEVATION A

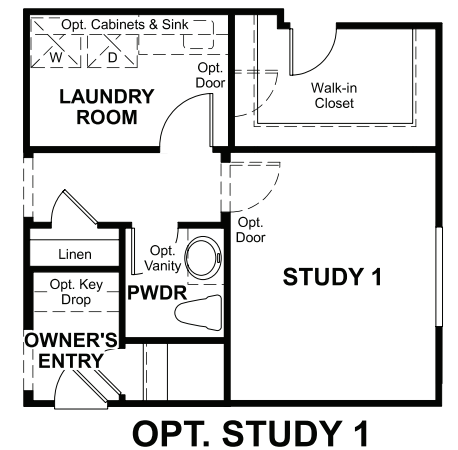
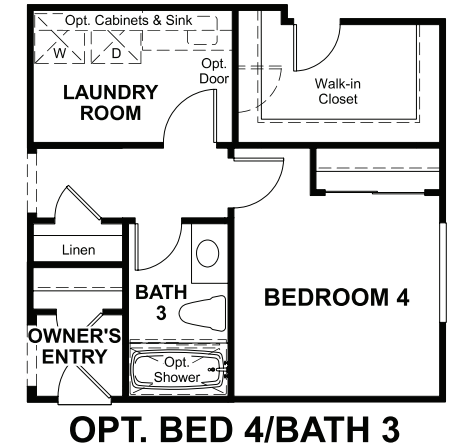
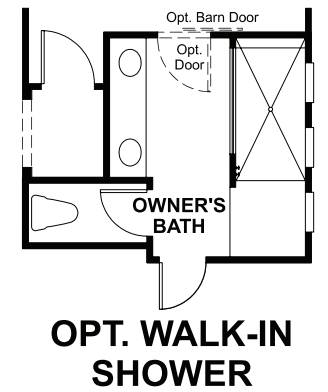
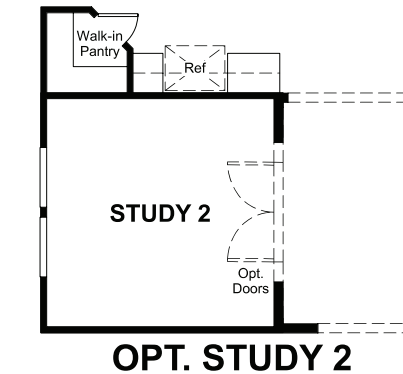
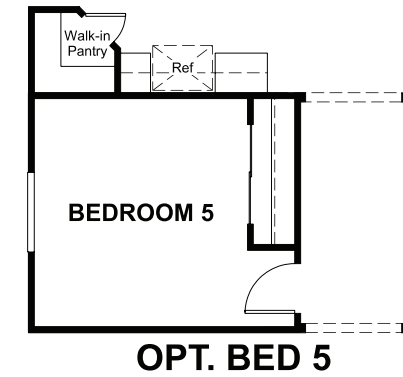
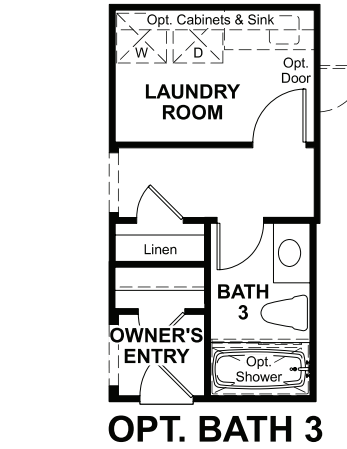
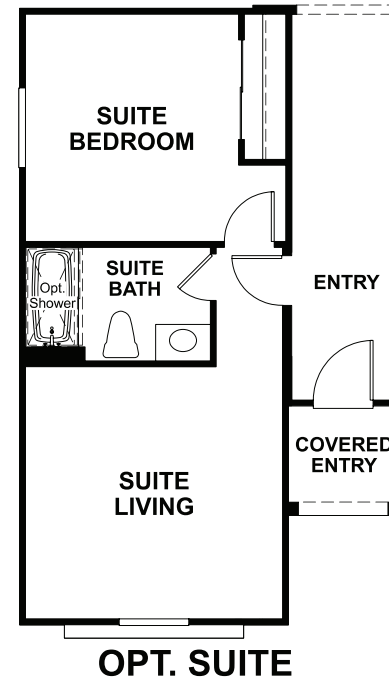
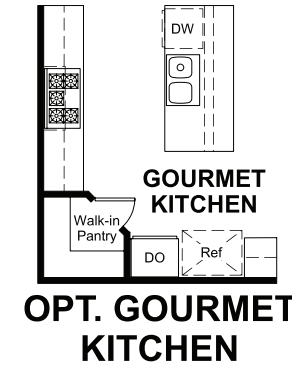


ELEVATION B

MAIN FLOOR  
PRELIMINARY



MAIN FLOOR OPTIONS  
PRELIMINARY



THIS PLAN'S PROJECTED  
**HERS® INDEX = 31** \*  
Projected Rating Based on Plans – Field Confirmation required

**How does this floor plan rate?**  
Take a look: 100 = Standard new home+ 130 = Typical resale Home++  
The lower number, the better! Refer to the RESNET® HERS index brochure or go to [www.RESNET.us](http://www.RESNET.us) and [www.HERSindex.com](http://www.HERSindex.com)

**What's a HERS® Index?** HERS stands for Home Energy Rating System, a system created by RESNET® to measure home energy efficiency. A Projected HERS index or rating is a computer simulation performed prior to construction by a third-party HERS rater using RESNET-accredited rating software, rated feature and specification data derived from home plans, features and specifications, and other data selected or assumed by the rater. The projected HERS index is approximate and is subject to change without notice. Actual results will vary.