

THE EMERALD

Approx. 2,260 sq. ft. | 4-5 bedrooms | 3 bathrooms | 2-car garage | Plan #F926



ELEVATION C

ABOUT THE EMERALD

Boasting a versatile single-story layout, the Emerald plan is ready to fit your family's wish list. A guest suite with a bedroom, living room and private bath offers multi-generational living possibilities. The guest suite living room can also be optioned as an additional bedroom, if desired. Toward the front of the home, you'll appreciate the convenience of two bedrooms—one of which can be optioned as a private study—with shared access to a full hall bath. At the heart of the home, an open kitchen flows into a dining area and great room, with access to a relaxing covered patio via sophisticated center-meet sliding doors. Completing the home, a secluded master suite features an attached bath and roomy walk-in closet.



ELEVATION A



ELEVATION B

*This information is presented for education purposes only. The HERS index for a confirmed rating will be determined by a third-party HERS rater based on data gathered from on-site observations and, if required, testing of rated features for a home as featured, optioned, located, oriented and/or built.

+Standard new home is based on the RESNET® Reference Home definition with a HERS® index of 100 (based on the 2006 International Energy Conservation Code).

++Typical resale home is based on the U.S. Department of Energy definition with a HERS® index of 130.

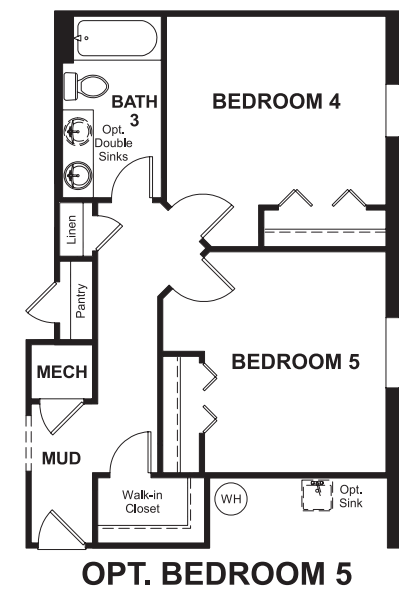
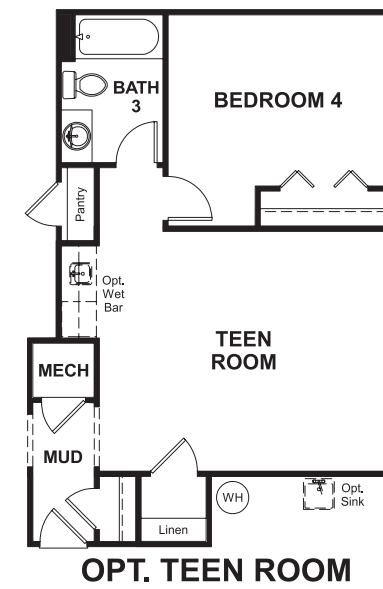
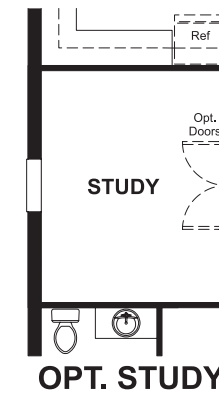
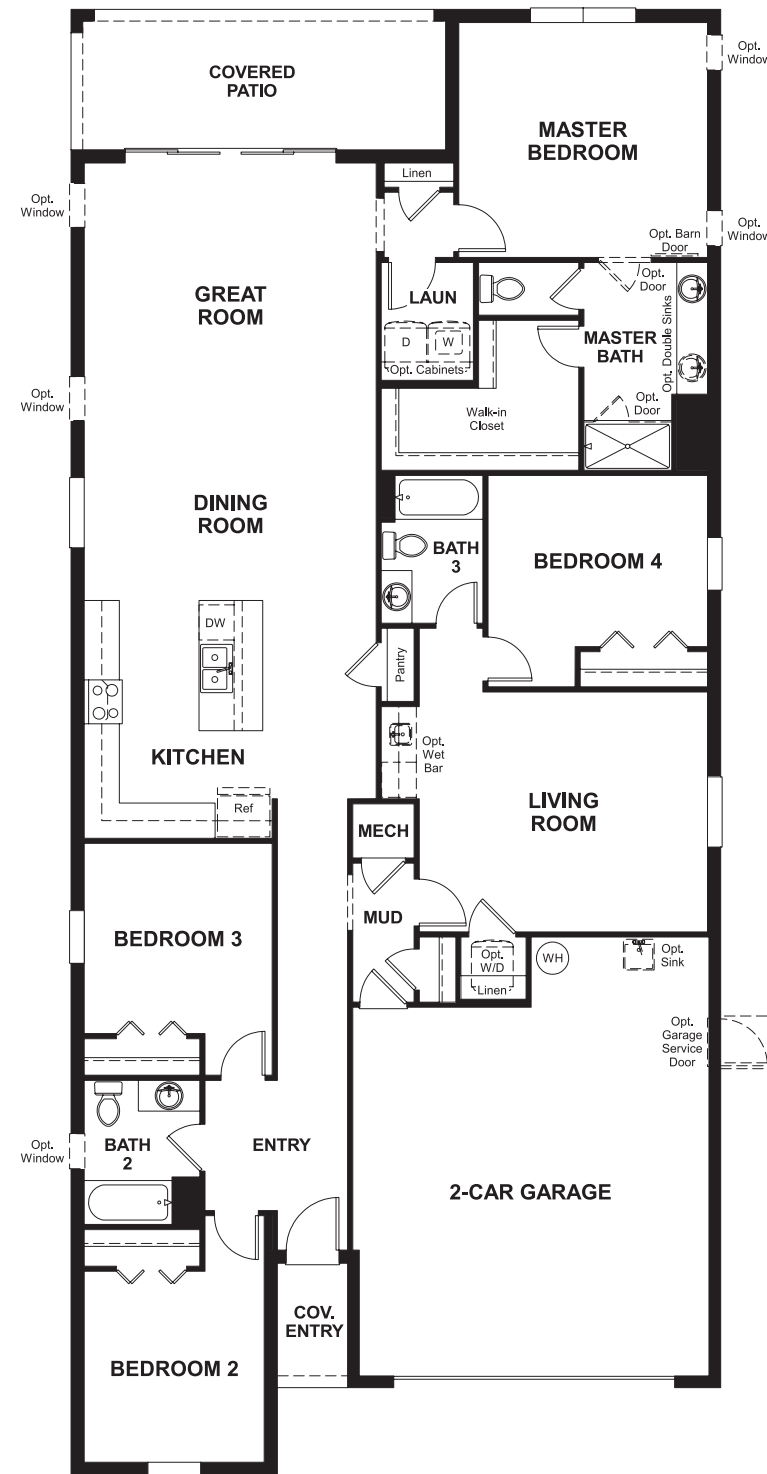
^RESNET® has developed the HERS® index to indicate the comparative efficiencies of homes. It is no guarantee that energy efficiencies will be achieved.



Floor plans and renderings are conceptual drawings and may vary from actual plans and homes as built. Options and features may not be available on all homes and are subject to change without notice. Actual homes may vary from photos and/or drawings which show upgraded landscaping and may not represent the lowest-priced homes in the community. Features may include optional upgrades and may not be available on all homes. Square footage numbers are approximate and are subject to change without notice. ©2022 Richmond American Homes, Richmond American Homes of Florida, LP, CBC1257429 1/26/2022

MAIN FLOOR

MAIN FLOOR OPTIONS



THIS PLAN'S PROJECTED **HERS® INDEX = 62***
 Projected Rating Based on Plans – Field Confirmation required

How does this floor plan rate?
 Take a look: **100** = Standard new home+ **130** = Typical resale Home++
 The lower number, the better! Refer to the RESNET® HERS index brochure or go to www.RESNET.us and www.HERSindex.com

What's a HERS® Index? HERS stands for Home Energy Rating System, a system created by RESNET® to measure home energy efficiency. ^
 A Projected HERS index or rating is a computer simulation performed prior to construction by a third-party HERS rater using RESNET-accredited rating software, rated feature and specification data derived from home plans, features and specifications, and other data selected or assumed by the rater. The projected HERS index is approximate and is subject to change without notice. Actual results will vary.