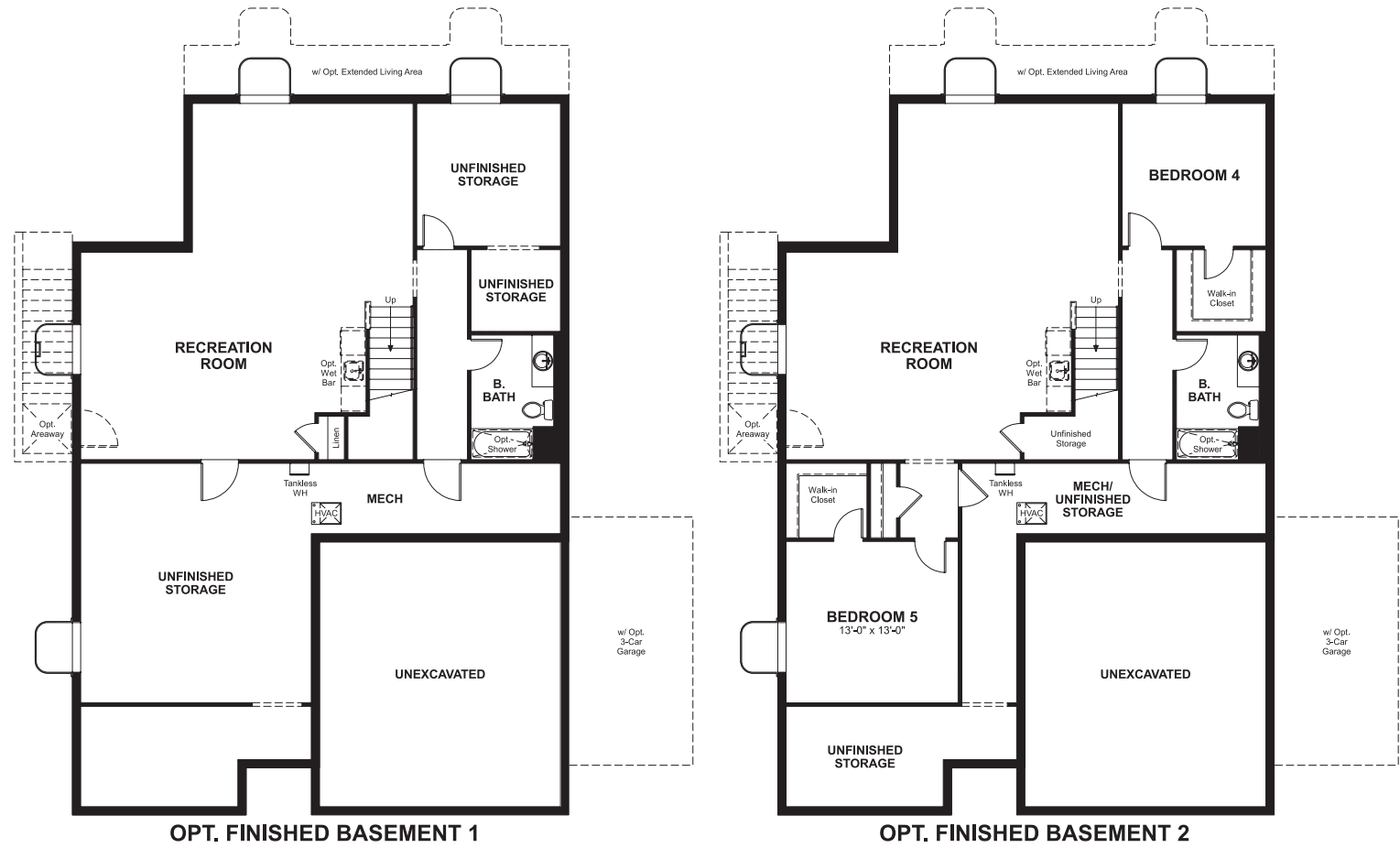


THE ANIKA

Approx. Sq. Ft.: 3,280 • Finished Sq. Ft.: 1,740 • Unfinished Sq. Ft.: 1,540 ^^  
1 story • 2-5 bedrooms • 2- to 3-car garage • Plan #U175

BASEMENT



ELEVATION F

ABOUT THE ANIKA

Comfort, convenience and luxurious options set this single-story home apart from the crowd. An open layout boasts a great room, a breakfast nook and a kitchen with optional gourmet features. The spacious master suite is adjacent and offers a generous walk-in closet and an attached bath with two deluxe options, including a walk-in shower. You'll also find a convenient laundry, a dining room that can be personalized as a study or a third bedroom, and a relaxing covered patio. Options include a 3-car garage, extended living area and finished basement complete with rec room, optional wet bar, bath and up to two additional bedrooms.

COMMUNITY LOCATION:

Jackson | 6232 West Antelope Flat Way | Herriman, UT 84096 | 801.590.6939

HOME GALLERY LOCATION:

Utah Home Gallery™ | 849 West LeVoy Drive, Suite 108 | Salt Lake City, UT 84123 | 801.545.5167

^^Square footage and plan dimensions are approximate and may show approximate total available footage with finished and unfinished footages listed separately. Unfinished areas may be available to be finished. Finished basement areas below-grade may vary in value from finished above-grade areas. Actual homes may vary from renderings, which may depict optional features, furniture layout and/or an elevation that may not be available on all homes which may change the footages and could change without notice. Drawings may not be to scale. Some structural options may not be available in combination. Ask a sales associate if you need assistance in personalizing your plan. Floor plans and renderings are conceptual drawings and may vary from actual plans and homes as built. Options and features may not be available on all homes and are subject to change without notice. Actual homes may vary from photos and/or drawings which show upgraded landscaping and may not represent the lowest-priced homes in the community. Features may include optional upgrades and may not be available on all homes. Square footage and plan dimensions are approximate and may show approximate total available footage with finished and unfinished footages listed separately. Unfinished areas may be available to be finished. Actual homes may vary from renderings, which may depict optional features, furniture layout and/or an elevation that may not be available on all homes which may change the footages and could change without notice. Drawings may not be to scale. Some structural options may not be available in combination. Ask a sales associate if you need assistance in personalizing your plan. Prices, specifications and availability subject to change without notice. ©2020 Richmond American Homes, Richmond American Homes of Utah, Inc. (866-400-4131). 8/14/2020



ELEVATION C



ELEVATION D

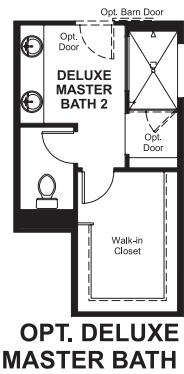
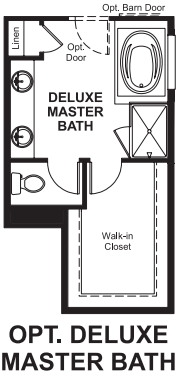
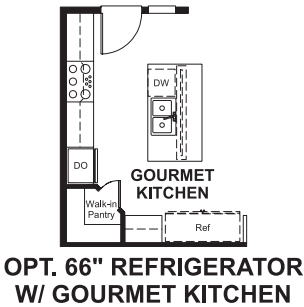
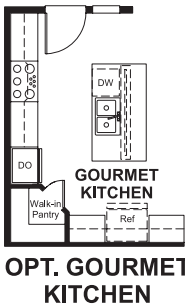
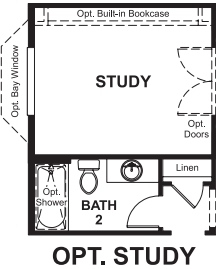
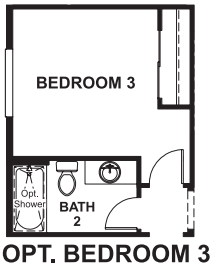
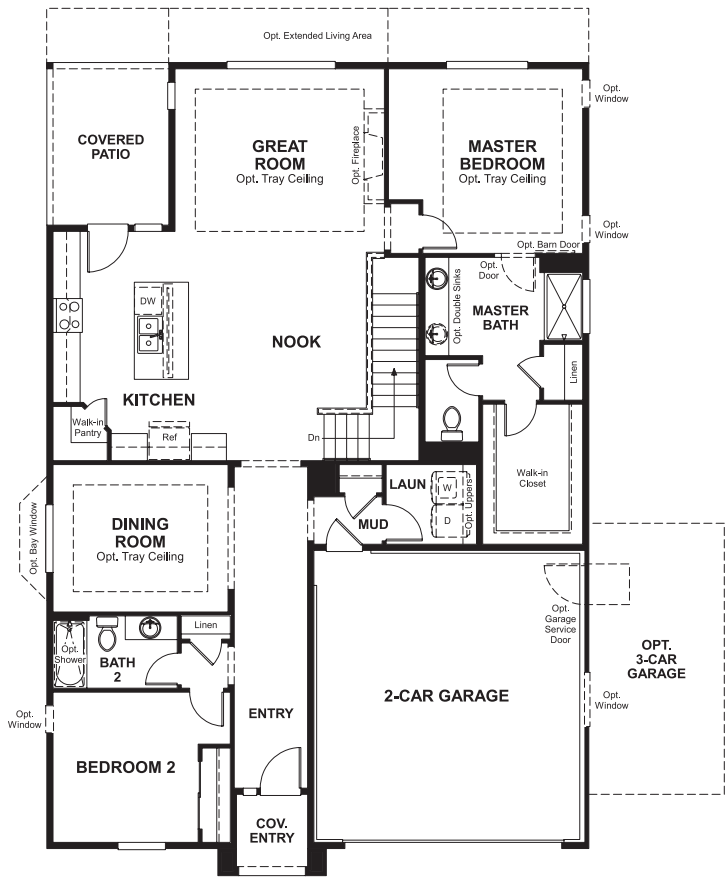


ELEVATION E



MAIN FLOOR

MAIN FLOOR OPTIONS



^^Square footage and plan dimensions are approximate and may show approximate total available footage with finished and unfinished footages listed separately. Unfinished areas may be available to be finished. Finished basement areas below-grade may vary in value from finished above-grade areas. Actual homes may vary from renderings, which may depict optional features, furniture layout and/or an elevation that may not be available on all homes which may change the footages and could change without notice. Drawings may not be to scale. Some structural options may not be available in combination. Ask a sales associate if you need assistance in personalizing your plan. Floor plans and renderings are conceptual drawings and may vary from actual plans and homes as built. Options and features may not be available on all homes and are subject to change without notice. Actual homes may vary from photos and/or drawings which show upgraded landscaping and may not represent the lowest-priced homes in the community. Features may include optional upgrades and may not be available on all homes. Square footage and plan dimensions are approximate and may show approximate total available footage with finished and unfinished footages listed separately. Unfinished areas may be available to be finished. Actual homes may vary from renderings, which may depict optional features, furniture layout and/or an elevation that may not be available on all homes which may change the footages and could change without notice. Drawings may not be to scale. Some structural options may not be available in combination. Ask a sales associate if you need assistance in personalizing your plan. Prices, specifications and availability subject to change without notice. ©2020 Richmond American Homes, Richmond American Homes of Utah, Inc. (866-400-4131). 8/14/2020

^^Square footage and plan dimensions are approximate and may show approximate total available footage with finished and unfinished footages listed separately. Unfinished areas may be available to be finished. Finished basement areas below-grade may vary in value from finished above-grade areas. Actual homes may vary from renderings, which may depict optional features, furniture layout and/or an elevation that may not be available on all homes which may change the footages and could change without notice. Drawings may not be to scale. Some structural options may not be available in combination. Ask a sales associate if you need assistance in personalizing your plan. Floor plans and renderings are conceptual drawings and may vary from actual plans and homes as built. Options and features may not be available on all homes and are subject to change without notice. Actual homes may vary from photos and/or drawings which show upgraded landscaping and may not represent the lowest-priced homes in the community. Features may include optional upgrades and may not be available on all homes. Square footage and plan dimensions are approximate and may show approximate total available footage with finished and unfinished footages listed separately. Unfinished areas may be available to be finished. Actual homes may vary from renderings, which may depict optional features, furniture layout and/or an elevation that may not be available on all homes which may change the footages and could change without notice. Drawings may not be to scale. Some structural options may not be available in combination. Ask a sales associate if you need assistance in personalizing your plan. Prices, specifications and availability subject to change without notice. ©2020 Richmond American Homes, Richmond American Homes of Utah, Inc. (866-400-4131). 8/14/2020