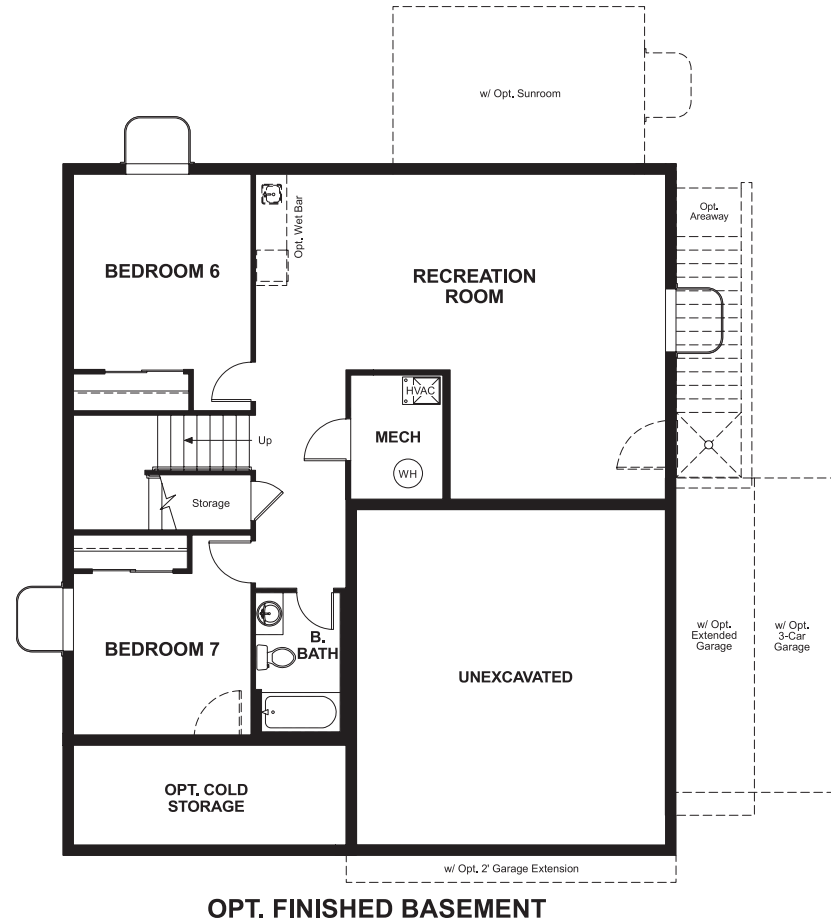


BASEMENT



OPT. FINISHED BASEMENT



ELEVATION G

ABOUT THE HEMINGWAY

This plan features an entryway with adjacent flex space that can be personalized to suit your needs. At the back of the home, you'll find a great room with optional corner fireplace, a large kitchen with island and mudroom with walk-in pantry. An upstairs laundry room, loft and sunroom off the kitchen complete this elegant home.

COMMUNITY LOCATION:

Jackson | 6232 West Antelope Flat Way | Herriman, UT 84096 | 801.590.6939

HOME GALLERY LOCATION:

Utah Home Gallery™ | 849 West LeVoy Drive, Suite 108 | Salt Lake City, UT 84123 | 801.545.5167

\*This information is presented for education purposes only. The HERS index for a confirmed rating will be determined by a third-party HERS rater based on data gathered from on-site observations and, if required, testing of rated features for a home as featured, optioned, located, oriented and/or built.

+Standard new home is based on the RESNET® Reference Home definition with a HERS® index of 100 (based on the 2006 International Energy Conservation Code).

++Typical resale home is based on the U.S. Department of Energy definition with a HERS® index of 130.

^RESNET® has developed the HERS® index to indicate the comparative efficiencies of homes. It is no guarantee that energy efficiencies will be achieved.

^^Square footage and plan dimensions are approximate and may show approximate total available footage with finished and unfinished footages listed separately. Unfinished areas may be available to be finished. Finished basement areas below-grade may vary in value from finished above-grade areas. Actual homes may vary from renderings, which may depict optional features, furniture layout and/or an elevation that may not be available on all homes which may change the footages and could change without notice. Drawings may not be to scale. Some structural options may not be available in combination. Ask a sales associate if you need assistance in personalizing your plan. Floor plans and renderings are conceptual drawings and may vary from actual plans and homes as built. Options and features may not be available on all homes and are subject to change without notice. Actual homes may vary from photos and/or drawings which show upgraded landscaping and may not represent the lowest-priced homes in the community. Features may include optional upgrades and may not be available on all homes. Square footage and plan dimensions are approximate and may show approximate total available footage with finished and unfinished footages listed separately. Unfinished areas may be available to be finished. Actual homes may vary from renderings, which may depict optional features, furniture layout and/or an elevation that may not be available on all homes which may change the footages and could change without notice. Drawings may not be to scale. Some structural options may not be available in combination. Ask a sales associate if you need assistance in personalizing your plan. Prices, specifications and availability subject to change without notice. ©2020 Richmond American Homes.

are approximate and may show approximate total available footage with finished and unfinished footages listed separately. Unfinished areas may be available to be finished. Actual homes may vary from renderings, which may depict optional features, furniture layout and/or an elevation that may not be available on all homes which may change the footages and could change without notice. Drawings may not be to scale. Some structural options may not be available in combination. Ask a sales associate if you need assistance in personalizing your plan. Prices, specifications and availability subject to change without notice. ©2020 Richmond American Homes of Utah, Inc. (866-400-4131). 8/14/2020



ELEVATION D



ELEVATION E



ELEVATION F



