

THE CITRINE

Approx. 1,870 sq. ft. | 3 to 4 bed | 2.5 to 3 bath | 2- to 3-car garage | Plan #N904



ELEVATION C

ABOUT THE CITRINE

Imagine your life in the two-story Citrine plan. On the main floor, you can enjoy breakfast at the spacious kitchen island or in the nearby dining nook, or entertain friends and family in the great room. Upstairs, melt the stress of the day away in the luxurious owner's suite, complete with a walk-in closet and a private bath with a large shower and optional dual sinks. The second floor also boasts two additional bedrooms, a convenient laundry and another full bath. Options include a main-floor bedroom in lieu of the study, a great room fireplace, and a covered patio.

COMMUNITY LOCATION:

Seasons at Thoroughbred Acres | 4162 Affirmed Drive | Olivehurst, CA 95961 | **530.491.7101**

DESIGN CENTER LOCATION:

Northern California Home Gallery[™] | One Harbor Center, Suite 150 | Suisun City, CA 94585 | **707.416.2800**

*This information is presented for education purposes only. The HERS index for a confirmed rating will be determined by a third-party HERS rater based on data gathered from on-site observations and, if required, testing of rated features for a home as featured, optioned, located, oriented and/or built.

+Standard new home is based on the RESNET® Reference Home definition with a HERS® index of 100 (based on the 2006 International Energy Conservation Code).

++Typical resale home is based on the U.S. Department of Energy definition with a HERS® index of 130.

^RESNET® has developed the HERS® index to indicate the comparative efficiencies of homes. It is no guarantee that energy efficiencies will be achieved.

Floor plans and renderings are conceptual drawings and may vary from actual plans and homes as built. Options and features may not be available on all homes and are subject to change without notice. Actual homes may vary from photos and/or drawings which show upgraded landscaping and may not represent the lowest-priced homes in the community. Features may include optional upgrades and may not be available on all homes. Square footage numbers are approximate and are subject to change without notice. Prices, specifications and availability subject to change without notice. ©2022 Richmond American Homes, Richmond American Homes of Maryland, Inc., California Department of Real Estate – Real Estate Broker, Corporation License Number 01842595. 2/25/2022

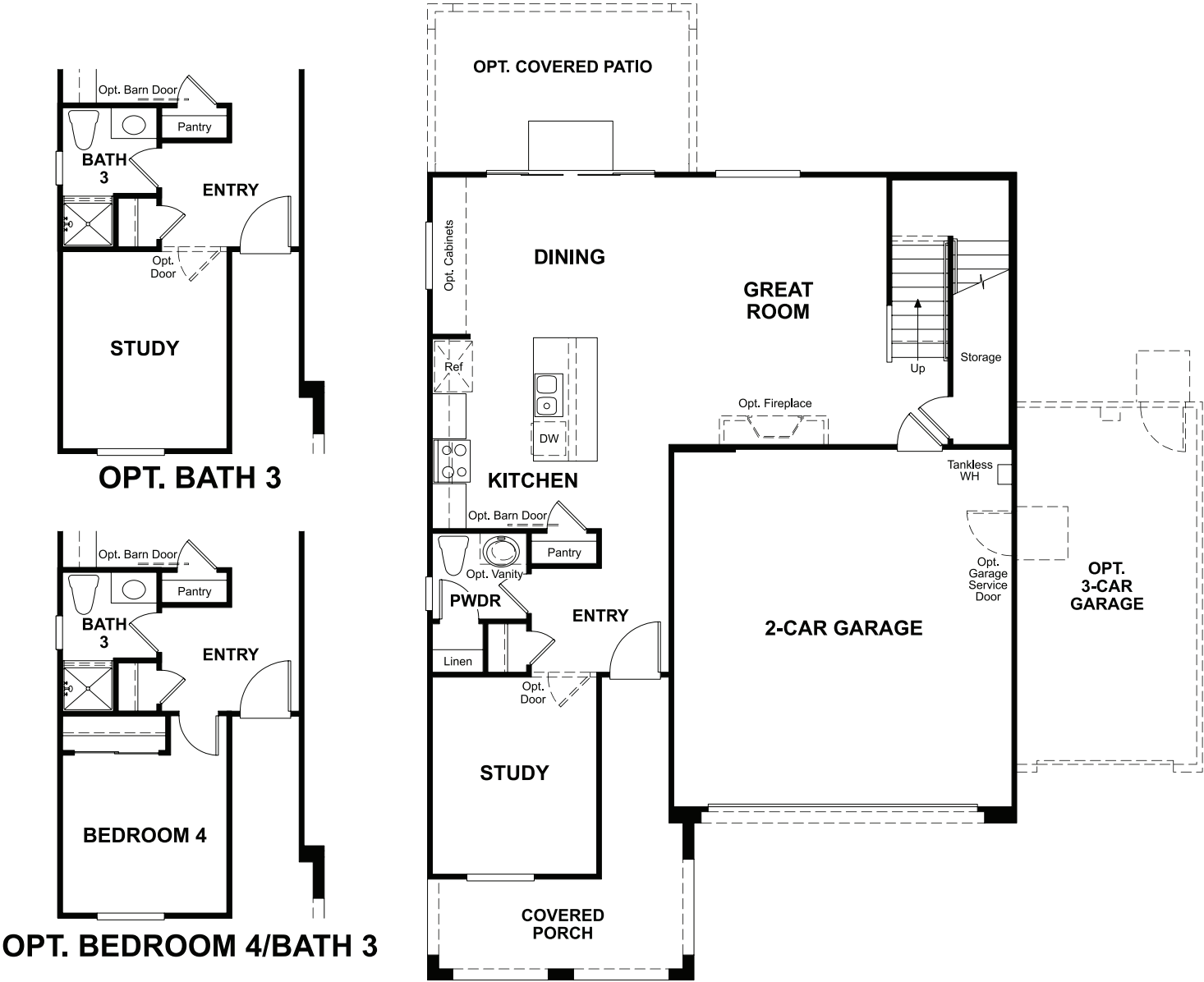


ELEVATION A

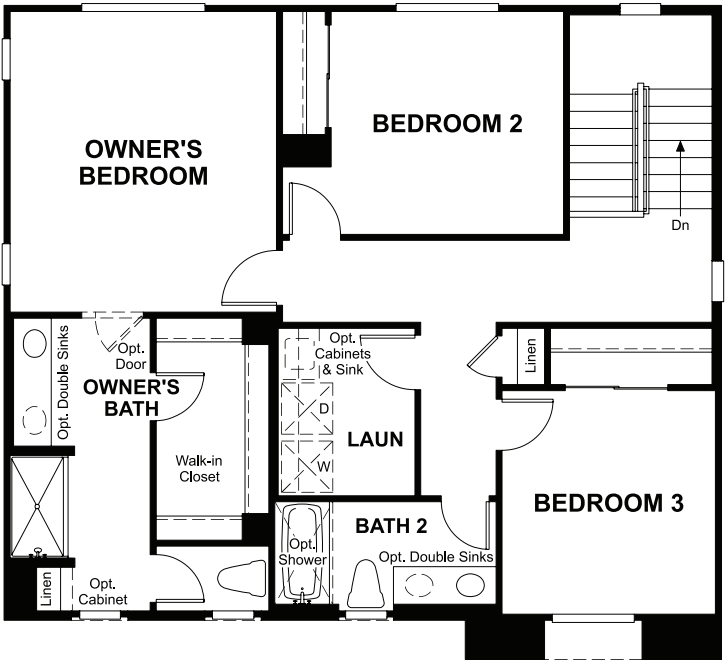


ELEVATION B

MAIN FLOOR
PRELIMINARY



SECOND FLOOR
PRELIMINARY



THIS PLAN'S PROJECTED
HERS® INDEX = 23
Projected rating based on plans – field confirmation required

How does this floor plan rate?
Take a look: **100** = standard new home™ **130** = typical resale home™
The lower the number, the better! Refer to the RESNET® HERS index brochure
or go to **RESNET.us** and **HERSindex.com**

What's a HERS® index? HERS stands for Home Energy Rating System, a system created by RESNET® to measure home energy efficiency.^
A projected HERS index or rating is a computer simulation performed prior to construction by a third-party HERS rater using RESNET-accredited rating software, rated feature and specification data derived from home plans, features and specifications, and other data selected or assumed by the rater. The projected HERS index is approximate and is subject to change without notice. Actual results will vary.