

THE SUNSTONE

Approx. 1,860 sq. ft. | 4 bed | 2 bath | 2- to 3-car garage | Plan #N919



ELEVATION D

ABOUT THE SUNSTONE

A covered entry gives the Sunstone plan ample curb appeal. Inside the charming ranch-style home, you'll find a spacious great room and an inviting kitchen, complete with center island, walk-in pantry and breakfast nook. You'll also appreciate a private study and four generous bedrooms, including a relaxing owner's suite with dual walk-in closets and an attached bath with optional double sinks. A central laundry and large covered patio complete the home. Personalization options include a tech center, fifth bedroom in lieu of the study and convenient 3-car garage.

COMMUNITY LOCATION:

Seasons at Thoroughbred Acres | 4162 Affirmed Drive | Olivehurst, CA 95961 | **530.491.7101**

DESIGN CENTER LOCATION:

Northern California Home Gallery[™] | One Harbor Center, Suite 150 | Suisun City, CA 94585 | **707.416.2800**

*This information is presented for education purposes only. The HERS index for a confirmed rating will be determined by a third-party HERS rater based on data gathered from on-site observations and, if required, testing of rated features for a home as featured, optioned, located, oriented and/or built.

+Standard new home is based on the RESNET® Reference Home definition with a HERS® index of 100 (based on the 2006 International Energy Conservation Code).

++Typical resale home is based on the U.S. Department of Energy definition with a HERS® index of 130.

^RESNET® has developed the HERS® index to indicate the comparative efficiencies of homes. It is no guarantee that energy efficiencies will be achieved.



Floor plans and renderings are conceptual drawings and may vary from actual plans and homes as built. Options and features may not be available on all homes and are subject to change without notice. Actual homes may vary from photos and/or drawings which show upgraded landscaping and may not represent the lowest-priced homes in the community. Features may include optional upgrades and may not be available on all homes. Square footage numbers are approximate and are subject to change without notice. Prices, specifications and availability subject to change without notice. ©2022 Richmond American Homes, Richmond American Homes of Maryland, Inc., California Department of Real Estate – Real Estate Broker, Corporation License Number 01842595. 2/24/2022

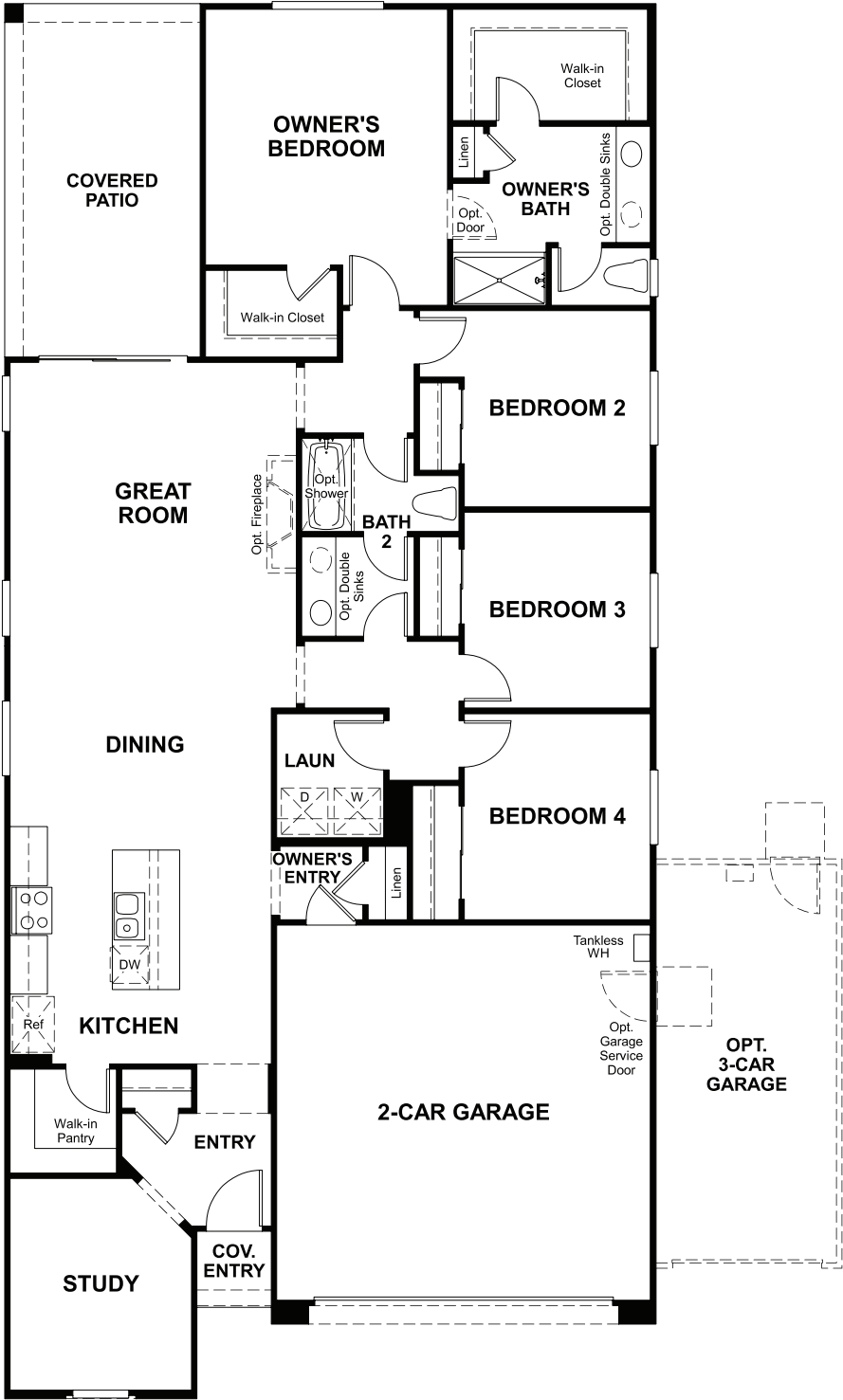


ELEVATION A

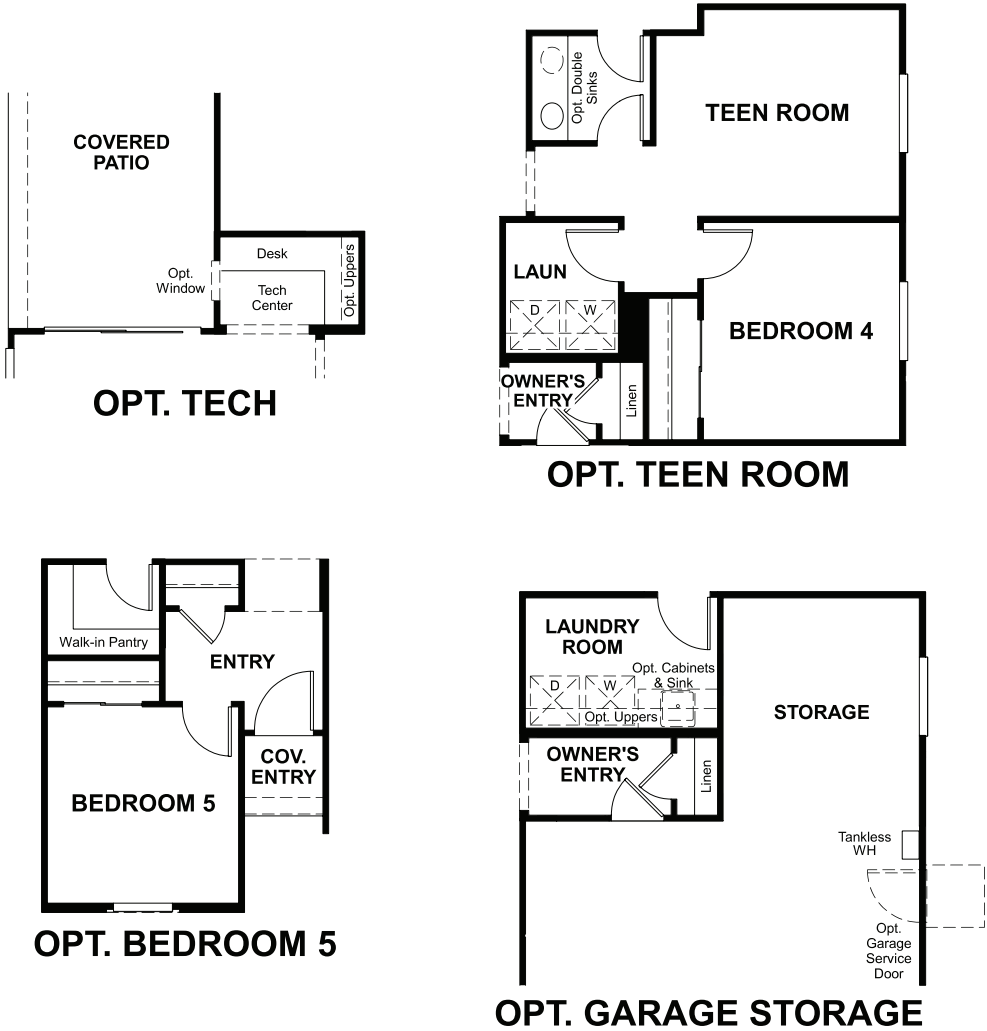


ELEVATION B

MAIN FLOOR
PRELIMINARY



MAIN-FLOOR OPTIONS
PRELIMINARY



THIS PLAN'S PROJECTED
HERS® INDEX = 25
Projected rating based on plans – field confirmation required

How does this floor plan rate?
Take a look: **100** = standard new home™ **130** = typical resale home™
The lower the number, the better! Refer to the RESNET® HERS index brochure
or go to **RESNET.us** and **HERSindex.com**

What's a HERS® index? HERS stands for Home Energy Rating System, a system created by RESNET® to measure home energy efficiency.^
A projected HERS index or rating is a computer simulation performed prior to construction by a third-party HERS rater using RESNET-accredited rating software, rated feature and specification data derived from home plans, features and specifications, and other data selected or assumed by the rater. The projected HERS index is approximate and is subject to change without notice. Actual results will vary.