

THE PEWTER

Approx. 1,820 sq. ft. | 3 bedrooms | 2 baths | 2-car + RV garage | Plan #P929



ELEVATION C - Shown with Optional Stone

ABOUT THE PEWTER

The ranch-style Pewter floor plan includes a very exciting feature—an attached RV garage! The interior of the home is just as attractive, and centers around an open layout with a great room with center meet doors to the covered patio, a dining area and a kitchen with a center island and a large walk-in pantry. Off the great room, the master suite showcases a walk-in closet and a private bath, and can be optioned with a door to the covered patio. Two additional bedrooms and a bath round out the residence. Make this dream home your own and opt for a study in place of the third bedroom.

COMMUNITY LOCATION:

Seasons at Lakes at Rancho El Dorado | 21908 North Daniel Drive | Maricopa, AZ 85138 | **520.348.7117**

HOME GALLERY LOCATION:

Phoenix Home Gallery™ | 16427 North Scottsdale Road, Suite 175 | Scottsdale, AZ 85254 | **877.444.1485 Select Opt. 3**

*This information is presented for education purposes only. The HERS index for a confirmed rating will be determined by a third-party HERS rater based on data gathered from on-site observations and, if required, testing of rated features for a home as featured, optioned, located, oriented and/or built.

+Standard new home is based on the RESNET® Reference Home definition with a HERS® index of 100 (based on the 2006 International Energy Conservation Code).

++Typical resale home is based on the U.S. Department of Energy definition with a HERS® index of 130.

^RESNET® has developed the HERS® index to indicate the comparative efficiencies of homes. It is no guarantee that energy efficiencies will be achieved.

Floor plans and renderings are conceptual drawings and may vary from actual plans and homes as built. Options and features may not be available on all homes and are subject to change without notice. Actual homes may vary from photos and/or drawings which show upgraded landscaping and may not represent the lowest-priced homes in the community. Features may include optional upgrades and may not be available on all homes. Square footage numbers are approximate and are subject to change without notice. ©2020 Richmond American Homes, Richmond American Homes of Arizona, Inc. (a public report is available on the state real estate department's website), Richmond American Construction, Inc. ROC #206612. 6/18/2020



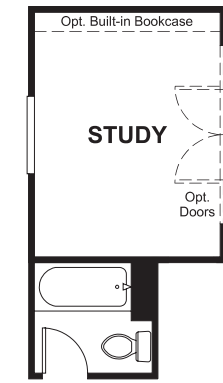
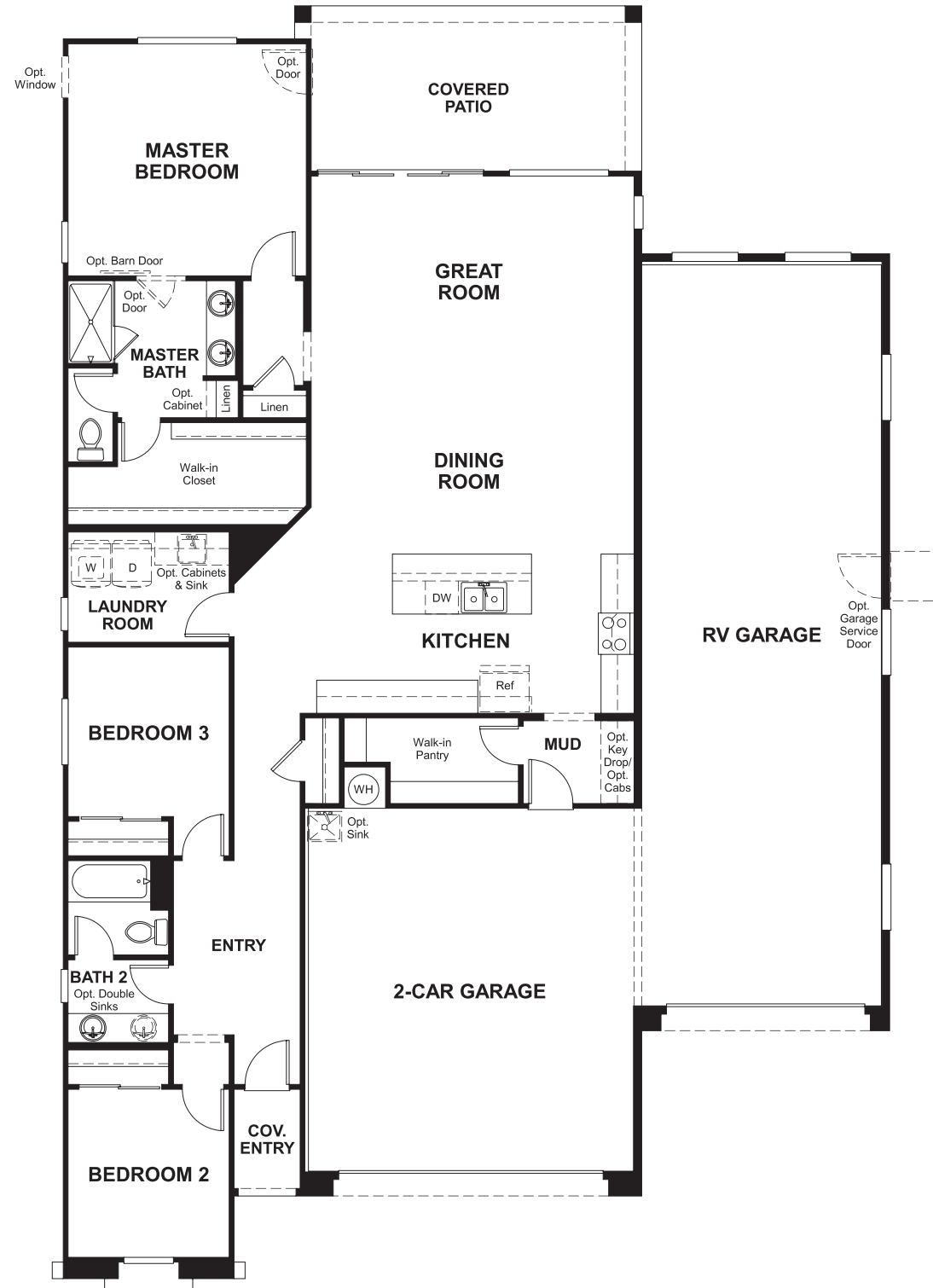
ELEVATION A



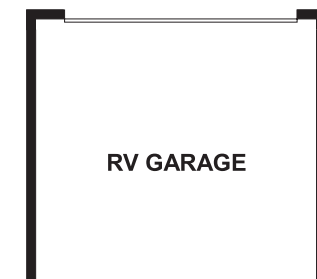
ELEVATION B

MAIN FLOOR

MAIN FLOOR OPTIONS



OPT. STUDY



OPT. REAR OVERHEAD RV GARAGE DOOR

THIS PLAN'S PROJECTED
HERS® INDEX = 57*
 Projected Rating Based on Plans – Field Confirmation required

How does this floor plan rate?

Take a look: **100** = Standard new home+ **130** = Typical resale Home++
 The lower number, the better! Refer to the RESNET® HERS index brochure or go to www.RESNET.us and www.HERSindex.com

What's a HERS® Index? HERS stands for Home Energy Rating System, a system created by RESNET® to measure home energy efficiency. ^
 A Projected HERS index or rating is a computer simulation performed prior to construction by a third-party HERS rater using RESNET-accredited rating software, rated feature and specification data derived from home plans, features and specifications, and other data selected or assumed by the rater. The projected HERS index is approximate and is subject to change without notice. Actual results will vary.