



ELEVATION C

ABOUT THE ARLINGTON

Looking for a single-story floor plan? Put the Arlington at the top of your list! This smartly designed home offers an open great room, dining room and kitchen, two bedrooms with a shared bath, and a lavish owner’s suite with a private bath and walk-in closet. A quiet study can be optioned as a fourth bedroom, and conveniences like a mudroom, laundry room with optional cabinets and sink, large kitchen island and walk-in pantry add to the plan’s single-floor appeal. Make this home your own with optional deluxe or gourmet kitchen features, center-meet patio doors and more!

COMMUNITY LOCATION:

Beechtree at Harvest at Limoneira | 380 Autumn Path Lane | Santa Paula, CA 93060 | **805.222.4571**

HOME GALLERY LOCATION:

Southern California Home Gallery™ | 5171 California Avenue, Suite 110 | Irvine, CA 92617 | **800.852.9714**

\*This information is presented for education purposes only. The HERS index for a confirmed rating will be determined by a third-party HERS rater based on data gathered from on-site observations and, if required, testing of rated features for a home as featured, optioned, located, oriented and/or built.

+Standard new home is based on the RESNET® Reference Home definition with a HERS® index of 100 (based on the 2006 International Energy Conservation Code).

++Typical resale home is based on the U.S. Department of Energy definition with a HERS® index of 130.

^RESNET® has developed the HERS® index to indicate the comparative efficiencies of homes. It is no guarantee that energy efficiencies will be achieved.

Floorplans and renderings are conceptual drawings and may vary from actual plans and homes as built. Options and features may not be available on all homes and are subject to change without notice. Actual homes may vary from photos and/or drawings which show upgraded landscaping and may not represent the lowest-priced homes in the community. Features may include optional upgrades and may not be available on all homes. Square footage numbers are approximate and are subject to change without notice. Prices, specifications and availability subject to change without notice. ©2021 Richmond American Homes, Richmond American Homes of Maryland, Inc., California Bureau of Real Estate – Real Estate Broker, Corporation License Number 01842595. 2/8/2021



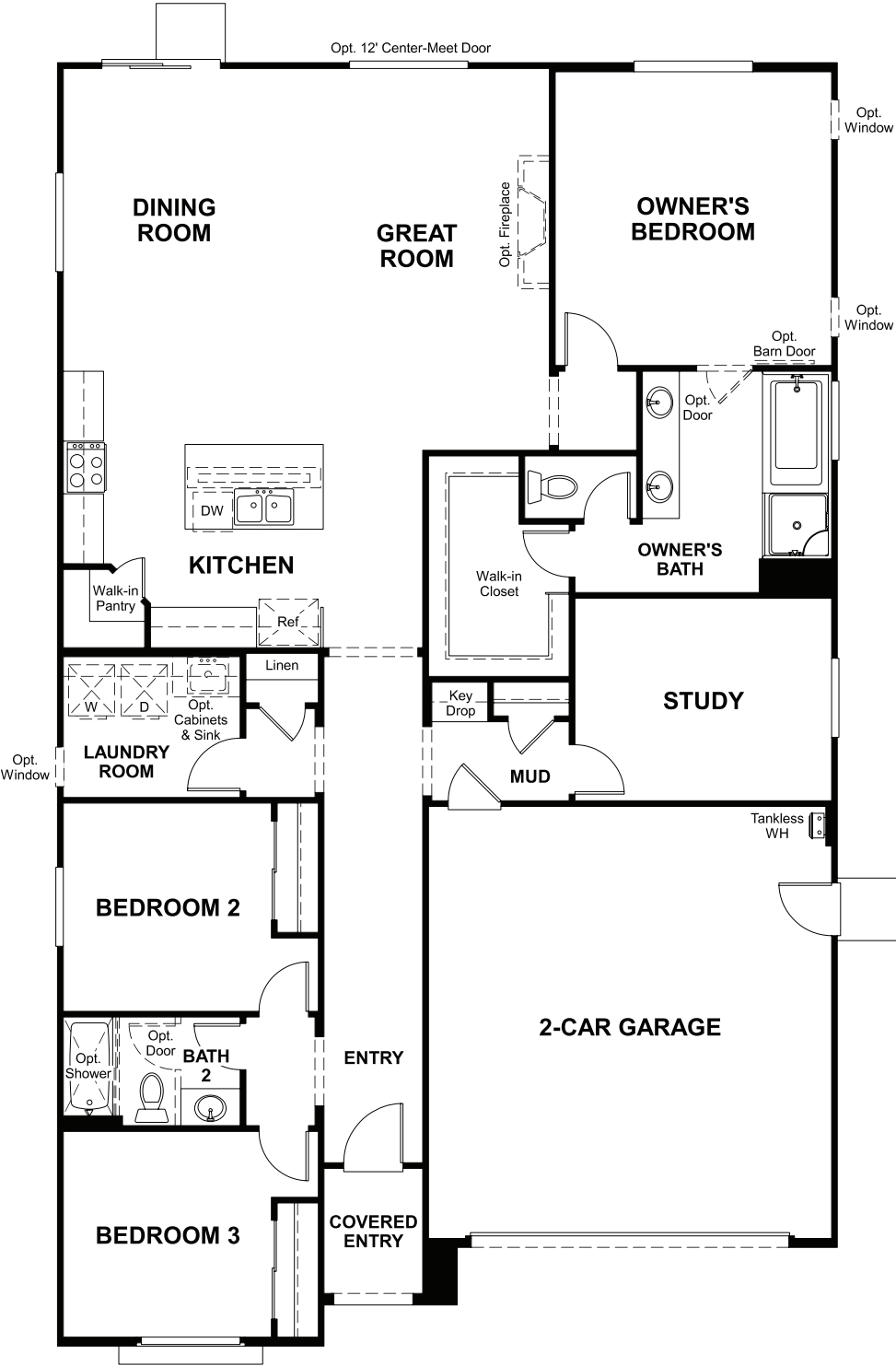
ELEVATION A



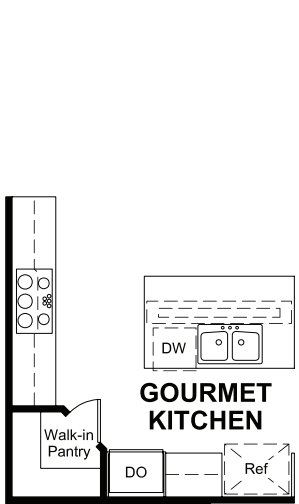
ELEVATION B



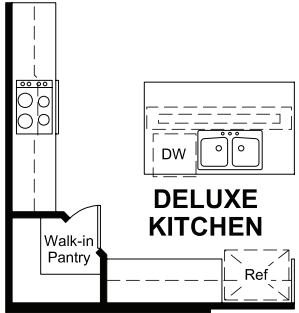
MAIN FLOOR



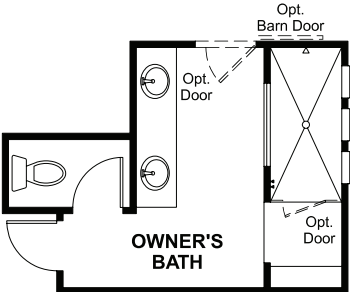
MAIN FLOOR OPTIONS



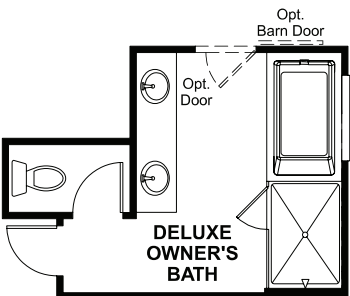
OPT. GOURMET KITCHEN



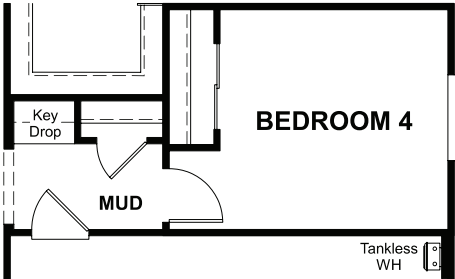
OPT. DELUXE KITCHEN



OPT. WALK-IN SHOWER AT OWNER'S BATH



OPT. DELUXE OWNER'S BATH



OPT. BEDROOM 4

THIS PLAN'S PROJECTED  
**HERS® INDEX = 27\***  
Projected Rating Based on Plans – Field Confirmation required

**How does this floor plan rate?**  
Take a look: **100** = Standard new home+ **130** = Typical resale Home++  
The lower number, the better! Refer to the RESNET® HERS index brochure or go to [www.RESNET.us](http://www.RESNET.us) and [www.HERSindex.com](http://www.HERSindex.com)

**What's a HERS® Index?** HERS stands for Home Energy Rating System, a system created by RESNET® to measure home energy efficiency.^  
A Projected HERS index or rating is a computer simulation performed prior to construction by a third-party HERS rater using RESNET-accredited rating software, rated feature and specification data derived from home plans, features and specifications, and other data selected or assumed by the rater. The projected HERS index is approximate and is subject to change without notice. Actual results will vary.