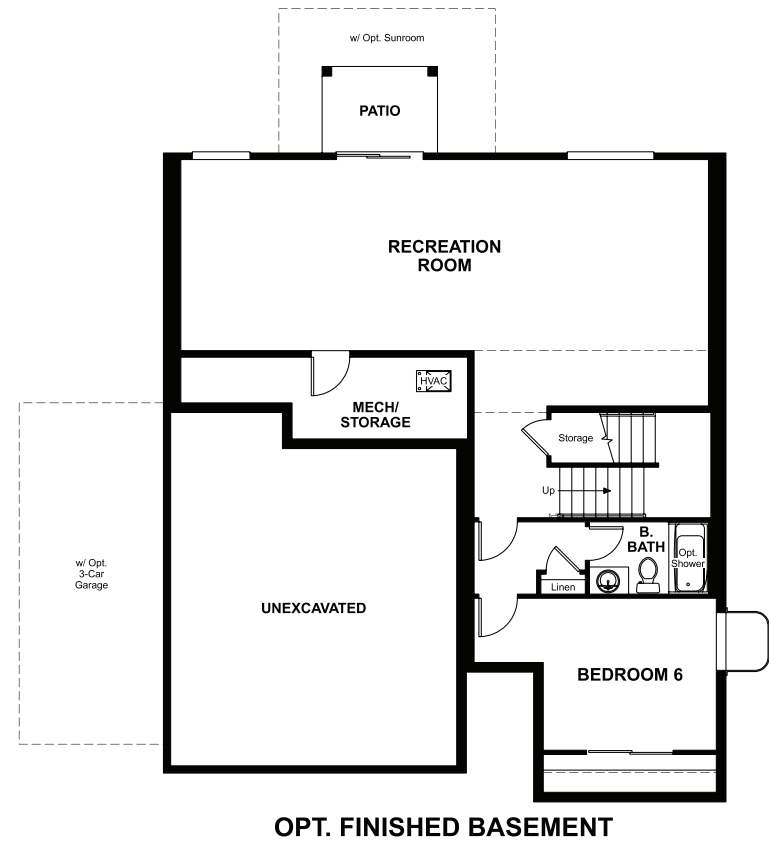


BASEMENT



ELEVATION F

ABOUT THE CORONADO

The main floor of the inviting Coronado plan offers an open layout with a spacious great room, an impressive gourmet kitchen and a dining area. A study and a powder room are adjacent. Upstairs, you'll find a laundry, a versatile loft and three generous bedrooms, including a lavish owner's suite with an expansive walk-in closet and a private bath. Opt for a walk-in shower for added luxury! For extra sleeping space, the loft can be optioned as a bedroom, as can the study. From chef's features in the kitchen and an adjacent sunroom to a fully finished walkout basement with a bedroom, a bath and a rec room, you'll love the exciting options that come with the Coronado.

COMMUNITY LOCATION:

Forest Glen | 2241 54th Street South East | Auburn, WA 98092 | **253.235.4570**

HOME GALLERY LOCATION:

Washington Home Gallery™ | 20829 72nd Avenue South, Suite 115 | Kent, WA 98032 | **253.446.7277**

*This information is presented for education purposes only. The HERS index for a confirmed rating will be determined by a third-party HERS rater based on data gathered from on-site observations and, if required, testing of rated features for a home as featured, optioned, located, oriented and/or built.

+Standard new home is based on the RESNET® Reference Home definition with a HERS® index of 100 (based on the 2006 International Energy Conservation Code).

++Typical resale home is based on the U.S. Department of Energy definition with a HERS® index of 130.

^RESNET® has developed the HERS® index to indicate the comparative efficiencies of homes. It is no guarantee that energy efficiencies will be achieved.

Floor plans and renderings are conceptual drawings and may vary from actual plans and homes as built. Options and features may not be available on all homes and are subject to change without notice. Actual homes may vary from photos and/or drawings which show upgraded landscaping and may not represent the lowest-priced homes in the community. Features may include optional upgrades and may not be available on all homes. Square footage numbers are approximate and are subject to change without notice. Prices, specifications and availability subject to change without notice. ©2020 Richmond American Homes, Richmond American Homes of Washington, Inc. 12/22/2020



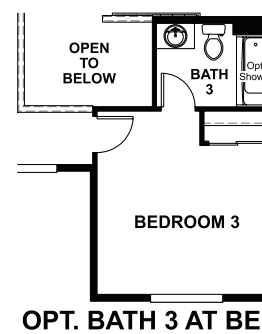
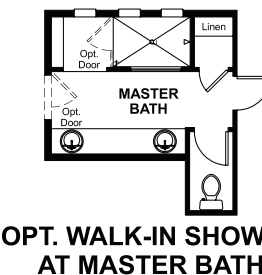
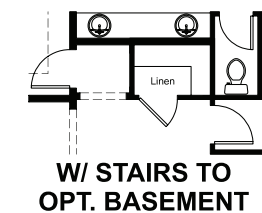
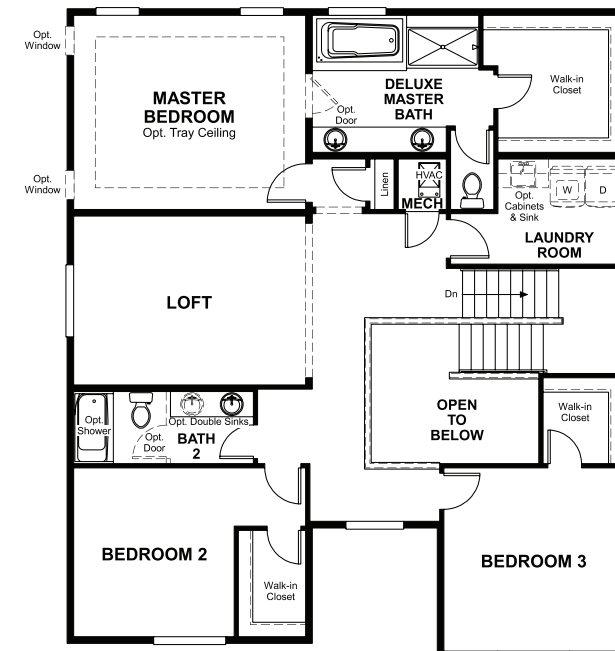
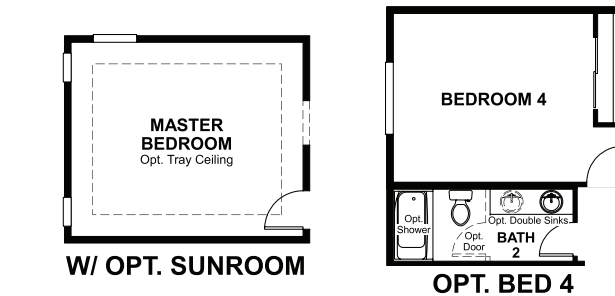
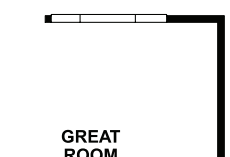
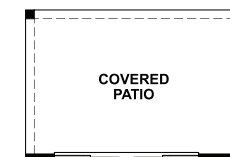
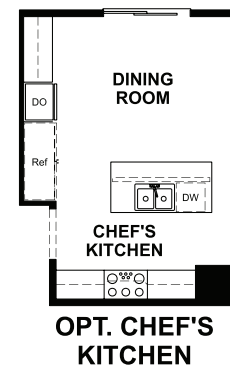
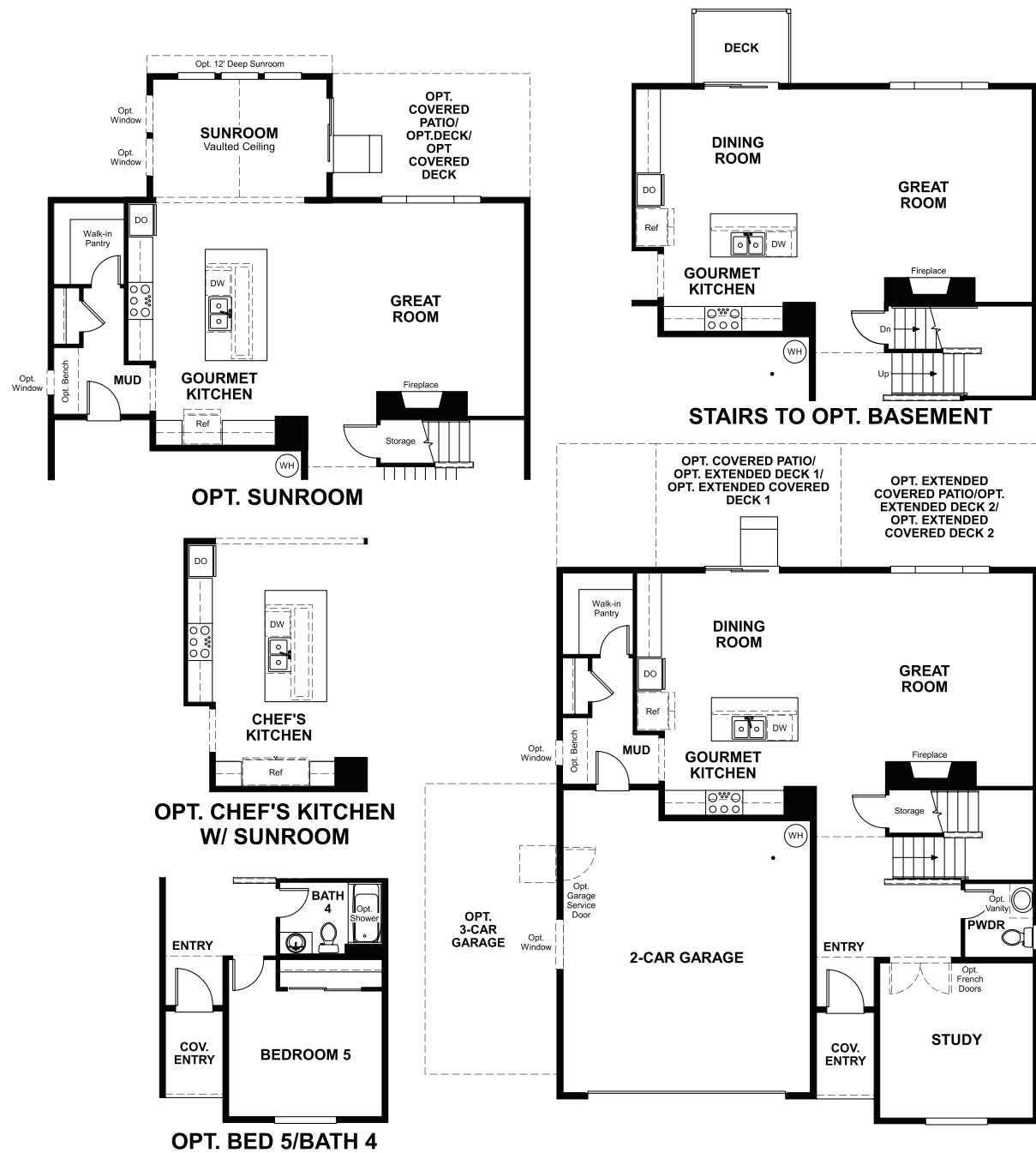
ELEVATION D



ELEVATION E

MAIN FLOOR

SECOND FLOOR



THIS PLAN'S PROJECTED **HERS® INDEX = 54***
Projected Rating Based on Plans – Field Confirmation required

How does this floor plan rate?
Take a look: **100** = Standard new home+ **130** = Typical resale Home++
The lower number, the better! Refer to the RESNET® HERS index brochure or go to www.RESNET.us and www.HERSindex.com

What's a HERS® Index? HERS stands for Home Energy Rating System, a system created by RESNET® to measure home energy efficiency. A Projected HERS index or rating is a computer simulation performed prior to construction by a third-party HERS rater using RESNET-accredited rating software, rated feature and specification data derived from home plans, features and specifications, and other data selected or assumed by the rater. The projected HERS index is approximate and is subject to change without notice. Actual results will vary.