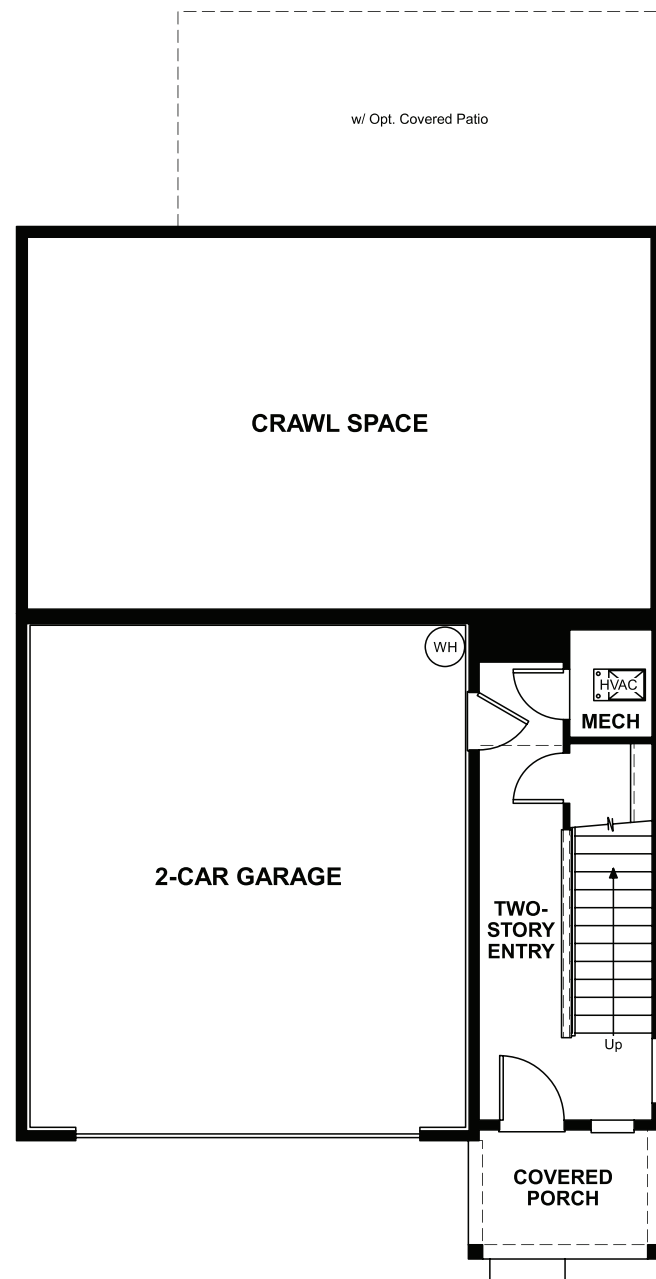


BASEMENT



ELEVATION C

ABOUT THE LEO

The Leo plan was designed for entertaining. It has a spacious great room with optional fireplace, an open dining room and an inviting kitchen with a center island offering ample seating. A large loft and three inviting bedrooms, including an elegant master suite with private bath, occupy the home's upper floor. Personalization options include a gourmet or chef's kitchen, covered patio, master sitting room and deluxe master bath.



ELEVATION A



ELEVATION B

COMMUNITY LOCATION:

Emerald Meadows | 35341 Fairfield Court | St. Helens, OR 97051 | 503.966.6362

HOME GALLERY LOCATION:

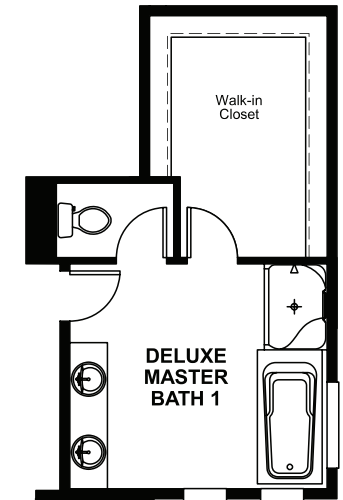
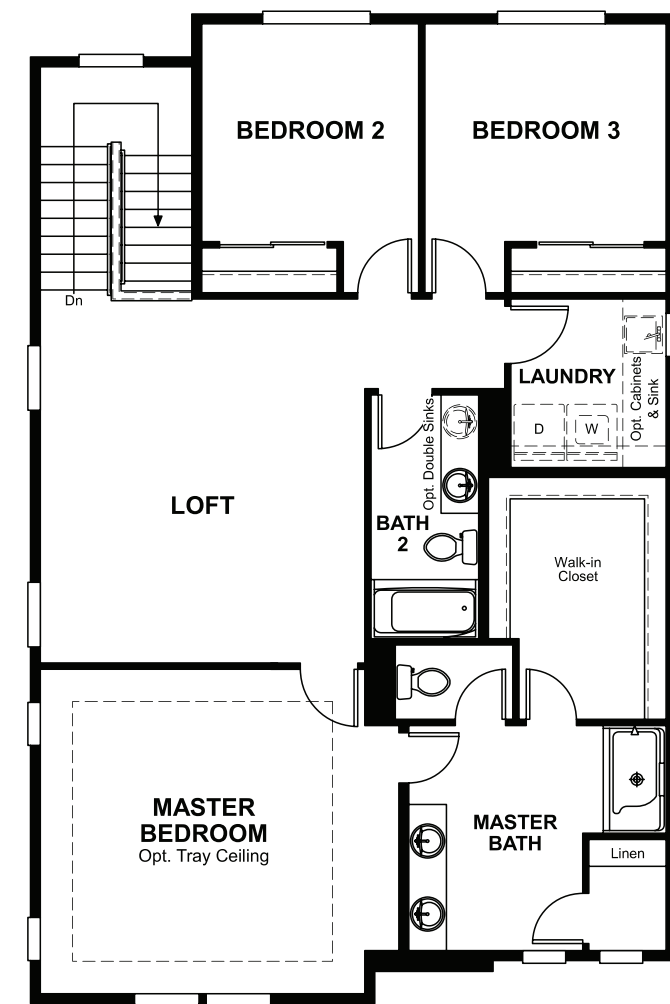
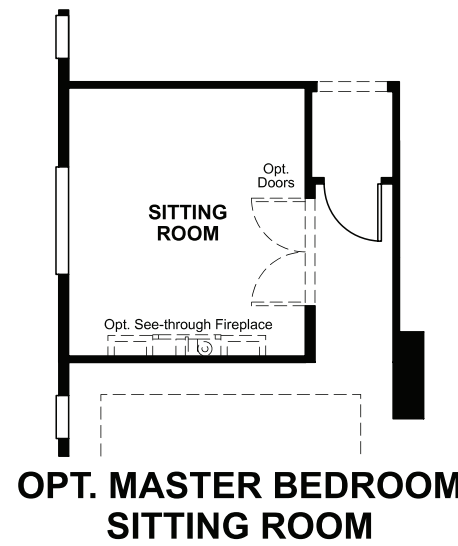
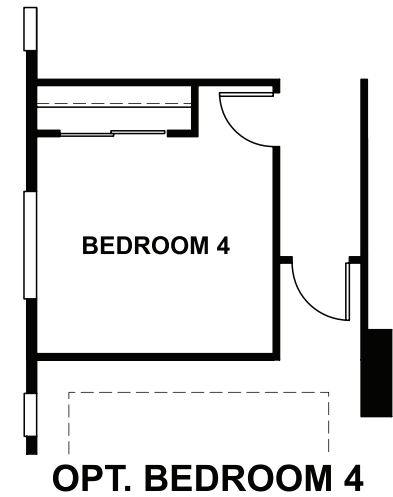
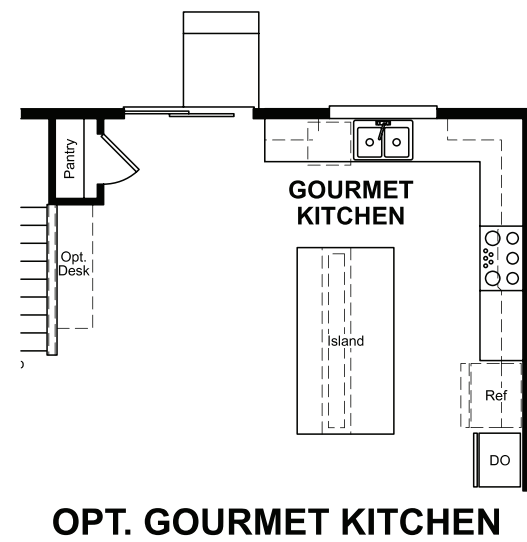
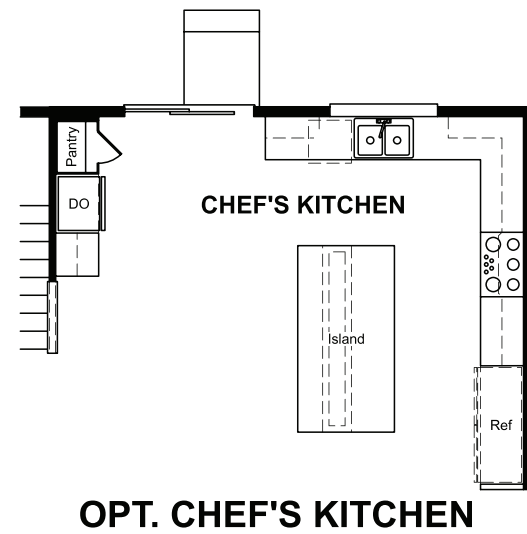
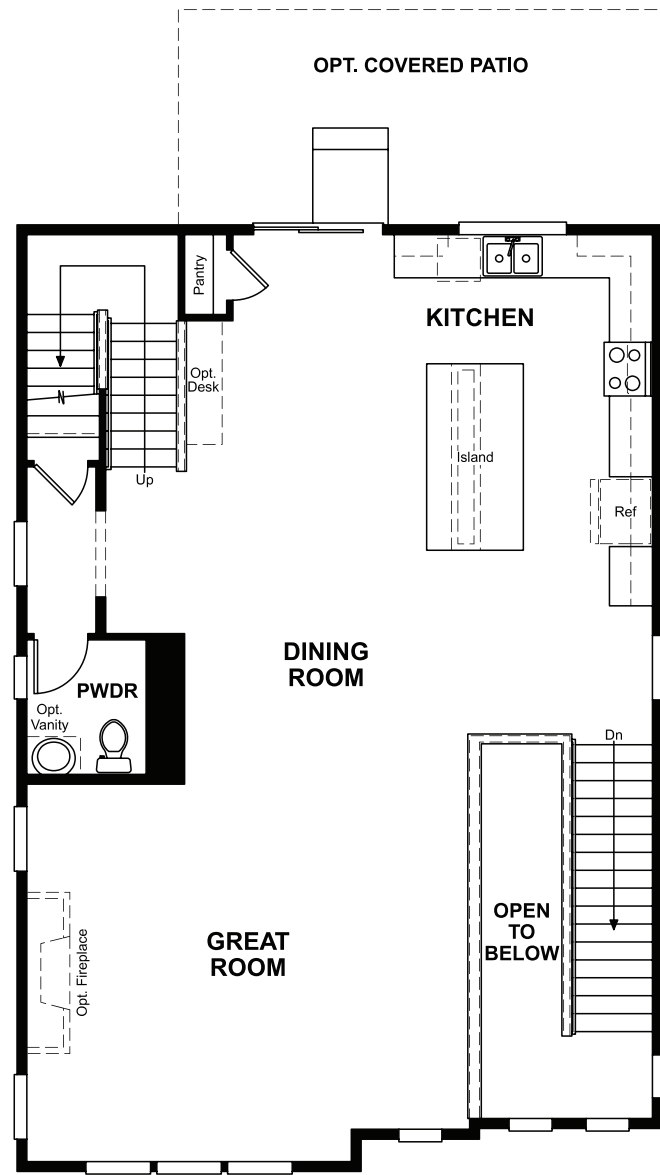
Oregon Home Gallery™ | 9899 Southwest 173rd Avenue | Beaverton, OR 97007 | 971.317.7520



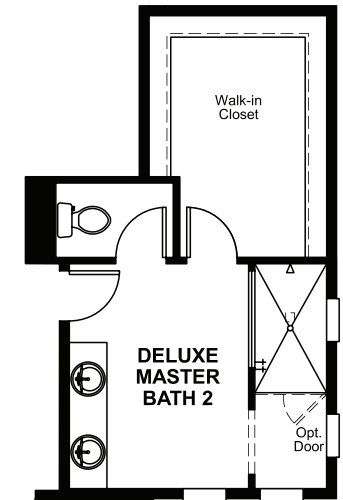
Floor plans and renderings are conceptual drawings and may vary from actual plans and homes as built. Options and features may not be available on all homes and are subject to change without notice. Actual homes may vary from photos and/or drawings which show upgraded landscaping and may not represent the lowest-priced homes in the community. Features may include optional upgrades and may not be available on all homes. Square footage numbers are approximate and are subject to change without notice. Prices, specifications and availability subject to change without notice. ©2020 Richmond American Homes, Richmond American Homes of Oregon, Inc., CCB #218193. 07/29/2020

MAIN FLOOR

SECOND FLOOR



OPT. DELUXE MASTER BATH 1



OPT. DELUXE MASTER BATH 2

Floor plans and renderings are conceptual drawings and may vary from actual plans and homes as built. Options and features may not be available on all homes and are subject to change without notice. Actual homes may vary from photos and/or drawings which show upgraded landscaping and may not represent the lowest-priced homes in the community. Features may include optional upgrades and may not be available on all homes. Square footage numbers are approximate and are subject to change without notice. Prices, specifications and availability subject to change without notice. ©2020 Richmond American Homes, Richmond American Homes of Oregon, Inc., CCB #218193. 07/29/2020

Floor plans and renderings are conceptual drawings and may vary from actual plans and homes as built. Options and features may not be available on all homes and are subject to change without notice. Actual homes may vary from photos and/or drawings which show upgraded landscaping and may not represent the lowest-priced homes in the community. Features may include optional upgrades and may not be available on all homes. Square footage numbers are approximate and are subject to change without notice. Prices, specifications and availability subject to change without notice. ©2020 Richmond American Homes, Richmond American Homes of Oregon, Inc., CCB #218193. 07/29/2020