

# THE BALSAM

Approx. 1,390 sq. ft. | 1 story | 2-3 bedrooms | 2-car garage | Plan #F932



ELEVATION C - SHOWN WITH OPT. STONE

## ABOUT THE BALSAM

This inspired ranch-style floor plan includes a covered patio directly off the great room. From the great room, you'll also enjoy open access to a dining nook and a charming kitchen with a built-in pantry and eat-in island. Additional highlights include a flex room—also available as an extra bedroom—a laundry room and two bedrooms, including a generous master suite with a walk-in closet and attached bath.

### HOME GALLERY INFORMATION:


Orlando Home Gallery™ | 2822 Commerce Park Drive, Suite 100 | Orlando, FL 32819 | **407.450.7320**

\*This information is presented for education purposes only. The HERS index for a confirmed rating will be determined by a third-party HERS rater based on data gathered from on-site observations and, if required, testing of rated features for a home as featured, optioned, located, oriented and/or built.

+Standard new home is based on the RESNET® Reference Home definition with a HERS® index of 100 (based on the 2006 International Energy Conservation Code).

++Typical resale home is based on the U.S. Department of Energy definition with a HERS® index of 130.

^RESNET® has developed the HERS® index to indicate the comparative efficiencies of homes. It is no guarantee that energy efficiencies will be achieved.



Floor plans and renderings are conceptual drawings and may vary from actual plans and homes as built. Options and features may not be available on all homes and are subject to change without notice. Actual homes may vary from photos and/or drawings which show upgraded landscaping and may not represent the lowest-priced homes in the community. Features may include optional upgrades and may not be available on all homes. Square footage numbers are approximate and are subject to change without notice. Prices, specifications and availability subject to change without notice. ©2019 Richmond American Homes, Richmond American Homes of Florida, LP, CBC1257429 9/4/2019



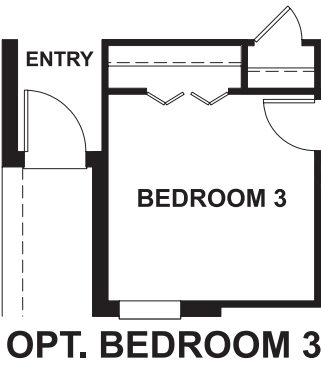
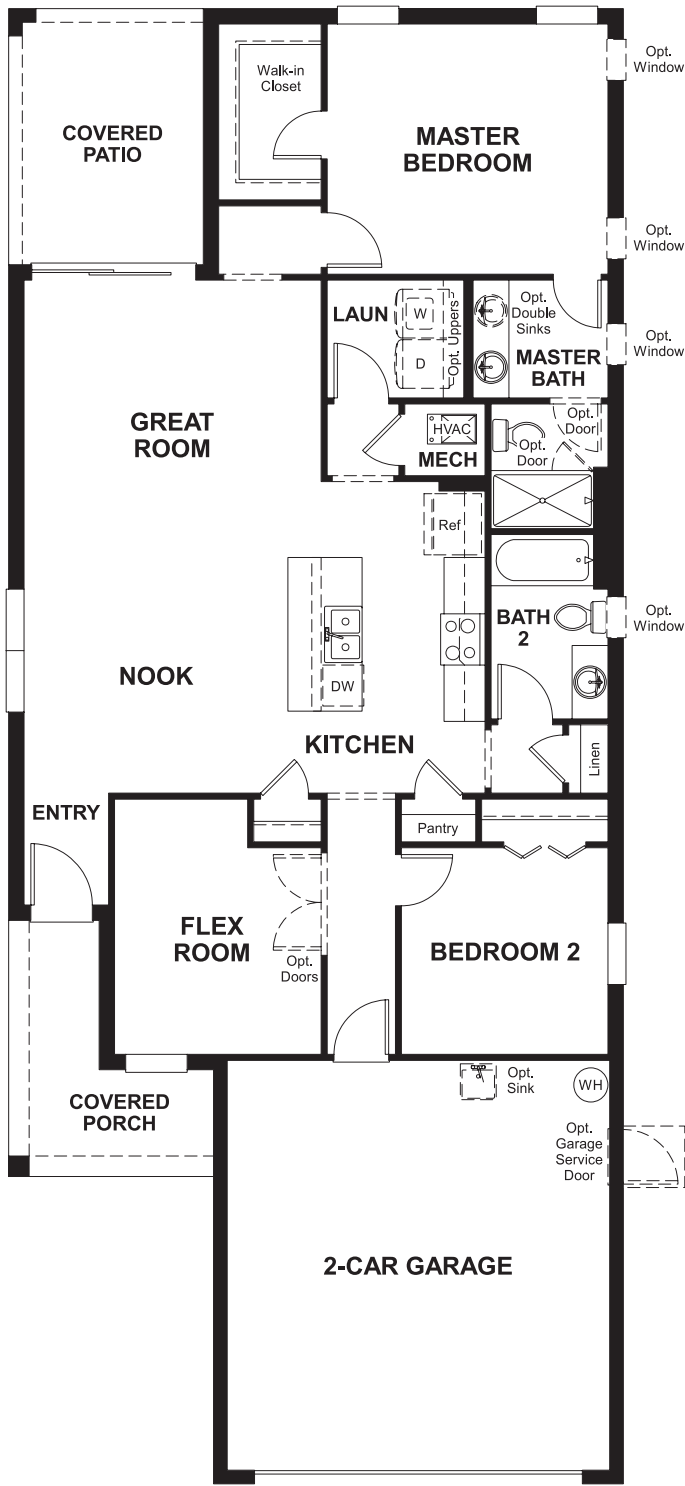
ELEVATION A



ELEVATION B - SHOWN WITH OPT. STONE

MAIN FLOOR

MAIN FLOOR OPTIONS



THIS PLAN’S PROJECTED  
**HERS® INDEX = 63\***  
Projected Rating Based on Plans – Field Confirmation required

**How does this floor plan rate?**  
Take a look: **100** = Standard new home+ **130** = Typical resale Home++  
The lower number, the better! Refer to the RESNET® HERS index brochure or go to **www.RESNET.us** and **www.HERSindex.com**

**What’s a HERS® Index?** HERS stands for Home Energy Rating System, a system created by RESNET® to measure home energy efficiency.^  
A Projected HERS index or rating is a computer simulation performed prior to construction by a third-party HERS rater using RESNET-accredited rating software, rated feature and specification data derived from home plans, features and specifications, and other data selected or assumed by the rater. The projected HERS index is approximate and is subject to change without notice. Actual results will vary.