

THE RALEIGH

Approx. 2,220-2,370 sq. ft. | 3-5 bedrooms | 2-3 baths | 2- to 3-car garage | Plan #P741



ELEVATION C

ABOUT THE RALEIGH

You'll find plenty to love about the Raleigh plan! The center of the home boasts a large kitchen with a convenient center island and walk-in pantry, which flows into an open-concept dining nook and great room. The owner's suite is adjacent, with a private bath and a walk-in closet. There are two bedrooms and a bath off the great room and off the entry is a private study that can be optioned as a dining room, an extra bedroom and even a guest suite with a full bath and walk-in closet. Additional options include a fifth bedroom in lieu of garage storage space, a gourmet kitchen, butlers pantry or tech center, and three deluxe owner's bath layouts. Includes covered patio!

COMMUNITY LOCATION:

The Preserve at Desert Oasis | 27647 North 176<sup>th</sup> Drive | Surprise, AZ 85387 | **623.289.6409**

HOME GALLERY LOCATION:

Phoenix Home Gallery™ | 16427 North Scottsdale Road, Suite 175 | Scottsdale, AZ 85254 | **877.444.1485** **Select Opt. 3**

\*This information is presented for education purposes only. The HERS index for a confirmed rating will be determined by a third-party HERS rater based on data gathered from on-site observations and, if required, testing of rated features for a home as featured, optioned, located, oriented and/or built.

+Standard new home is based on the RESNET® Reference Home definition with a HERS® index of 100 (based on the 2006 International Energy Conservation Code).

++Typical resale home is based on the U.S. Department of Energy definition with a HERS® index of 130.

^RESNET® has developed the HERS® index to indicate the comparative efficiencies of homes. It is no guarantee that energy efficiencies will be achieved.



Floor plans and renderings are conceptual drawings and may vary from actual plans and homes as built. Options and features may not be available on all homes and are subject to change without notice. Actual homes may vary from photos and/or drawings which show upgraded landscaping and may not represent the lowest-priced homes in the community. Features may include optional upgrades and may not be available on all homes. Square footage numbers are approximate and are subject to change without notice. ©2020 Richmond American Homes, Richmond American Homes of Arizona, Inc. (a public report is available on the state real estate department's website), Richmond American Construction, Inc. ROC #206612. 12/18/2020



ELEVATION A

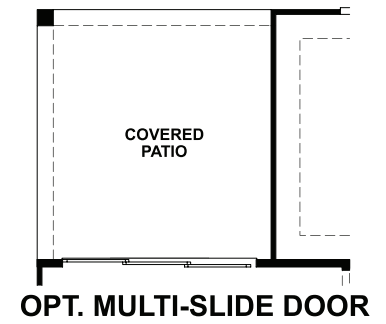
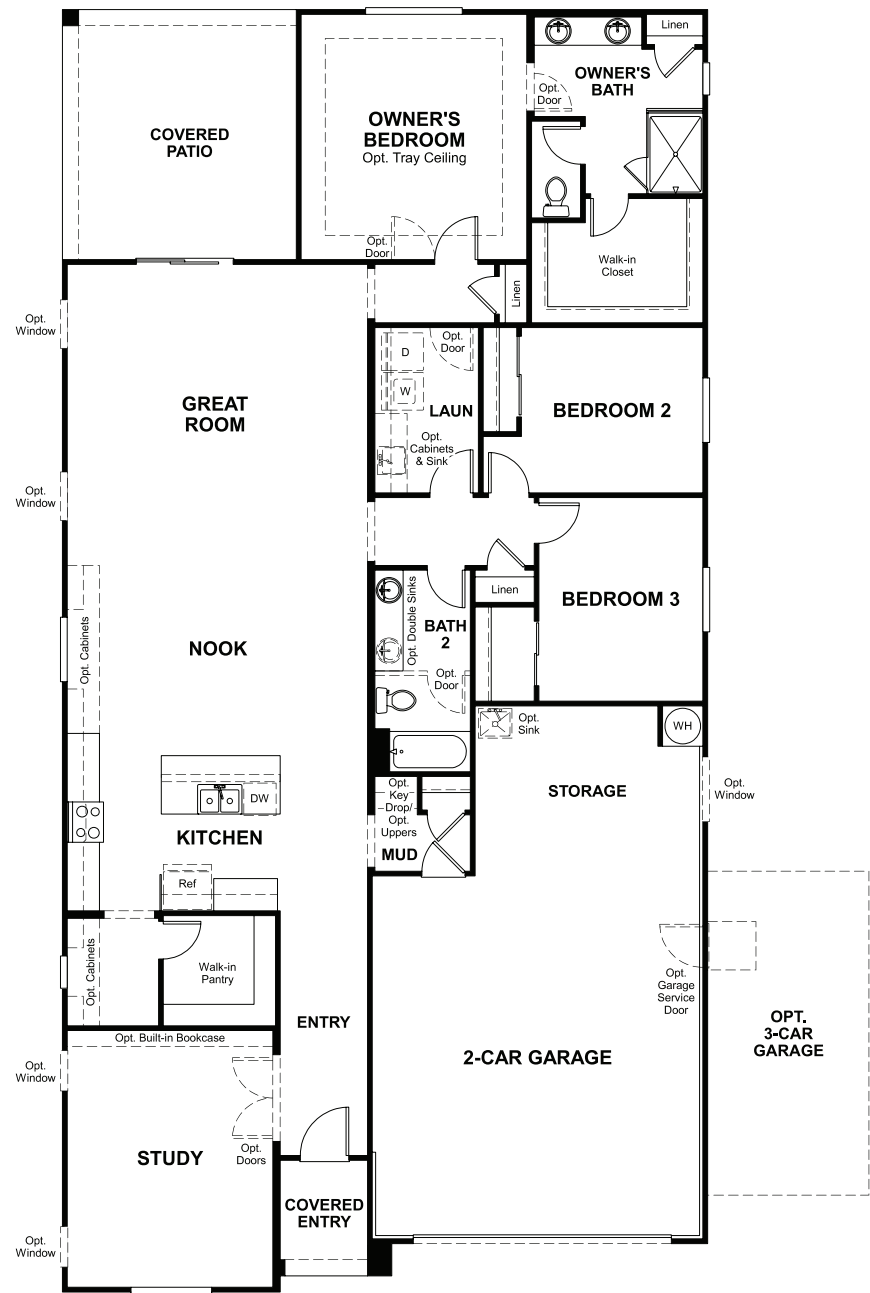


ELEVATION B

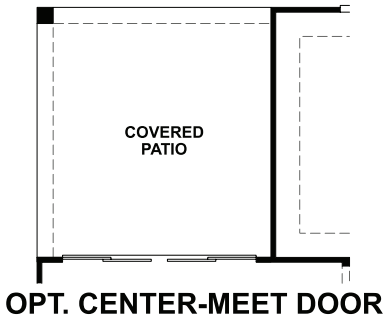


MAIN FLOOR

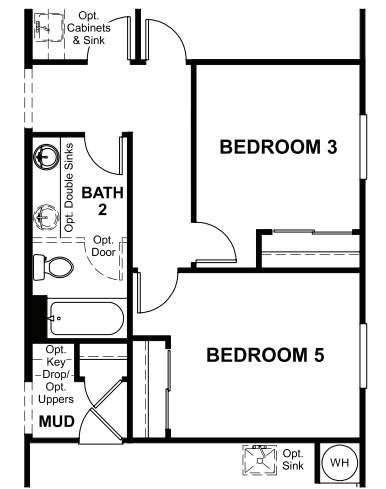
MAIN FLOOR OPTIONS



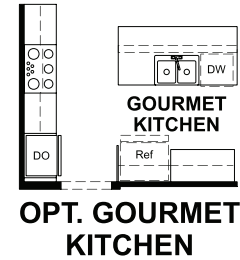
OPT. MULTI-SLIDE DOOR



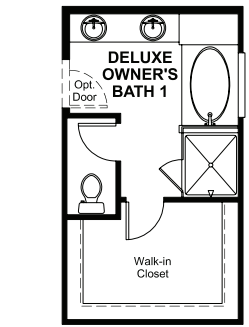
OPT. CENTER-MEET DOOR



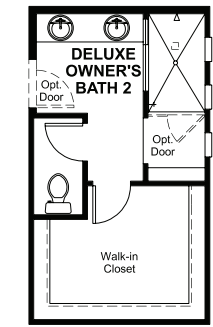
OPT. BEDROOM 5



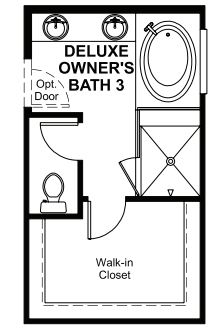
OPT. GOURMET KITCHEN



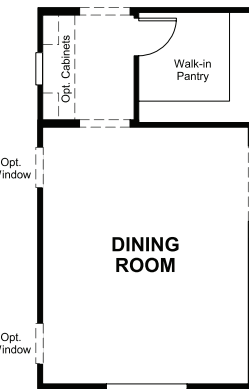
OPT. DELUXE OWNER'S BATH #1



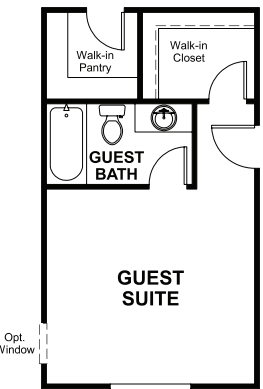
OPT. DELUXE OWNER'S BATH #2



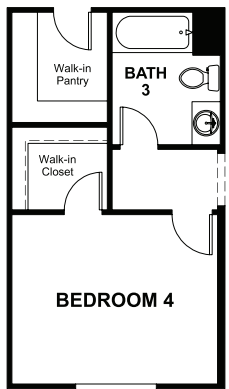
OPT. DELUXE OWNER'S BATH #3



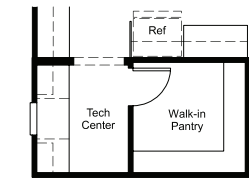
OPT. DINING ROOM



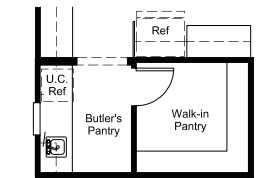
OPT. GUEST SUITE



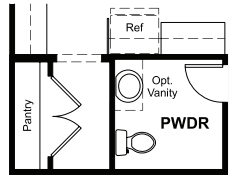
OPT. BEDROOM 4



OPT. TECH



OPT. BUTLER'S PANTRY



OPT. POWDER

THIS PLAN'S PROJECTED  
**HERS® INDEX = 57\***  
Projected Rating Based on Plans – Field Confirmation required

**How does this floor plan rate?**  
Take a look: **100** = Standard new home+ **130** = Typical resale Home++  
The lower number, the better! Refer to the RESNET® HERS index brochure or go to [www.RESNET.us](http://www.RESNET.us) and [www.HERSindex.com](http://www.HERSindex.com)

**What's a HERS® Index?** HERS stands for Home Energy Rating System, a system created by RESNET® to measure home energy efficiency.^  
A Projected HERS index or rating is a computer simulation performed prior to construction by a third-party HERS rater using RESNET-accredited rating software, rated feature and specification data derived from home plans, features and specifications, and other data selected or assumed by the rater. The projected HERS index is approximate and is subject to change without notice. Actual results will vary.