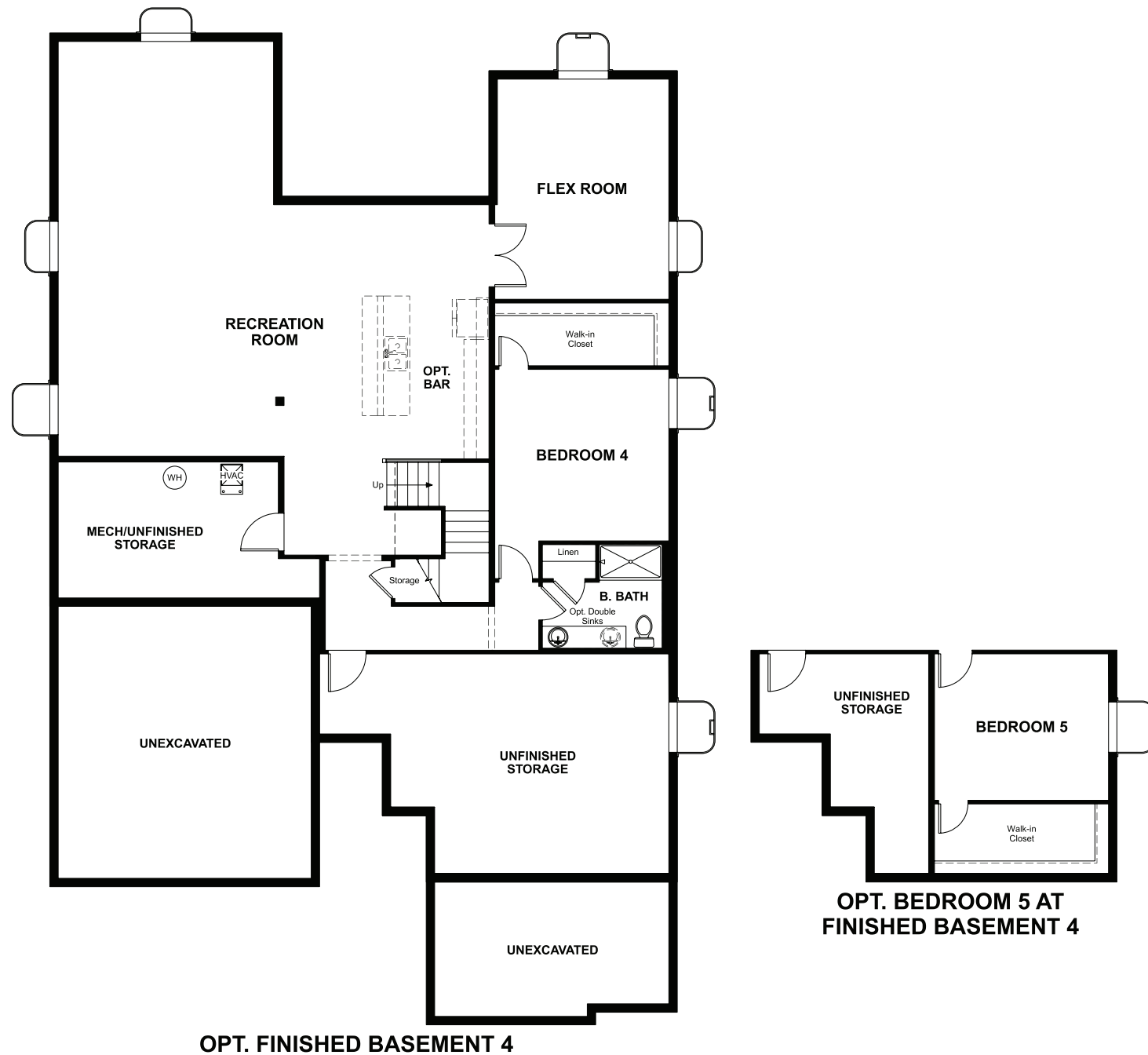


# THE RIVERBEND

Approx. 2,490 sq. ft. | 1 story | 3-5 bedrooms | 3-car garage | Plan #D853

## BASEMENT



ELEVATION D

### ABOUT THE RIVERBEND

At the heart of the ranch-style Riverbend plan is an expansive great room that overlooks a generous covered patio. An adjacent dining room flows into an inviting kitchen featuring a spacious island and walk-in pantry, and a private master suite boasts dual walk-in closets. You'll also appreciate convenient laundry and powder rooms, two additional bedrooms with a shared bath, and a quiet study. Make this home your own with an optional deluxe master bath, a guest suite with a living room, and a finished basement.



ELEVATION A



ELEVATION B



ELEVATION C

#### COMMUNITY LOCATION:

Ascent Village at Sterling Ranch | 9873 Eagle River Street | Littleton, CO 80125 | 303.850.5750

#### HOME GALLERY LOCATION:

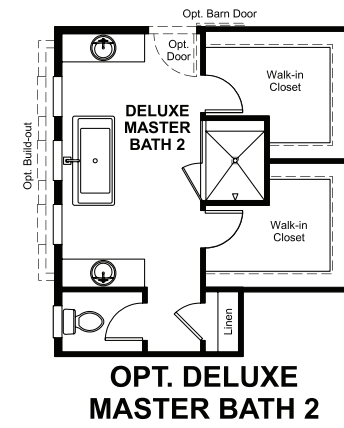
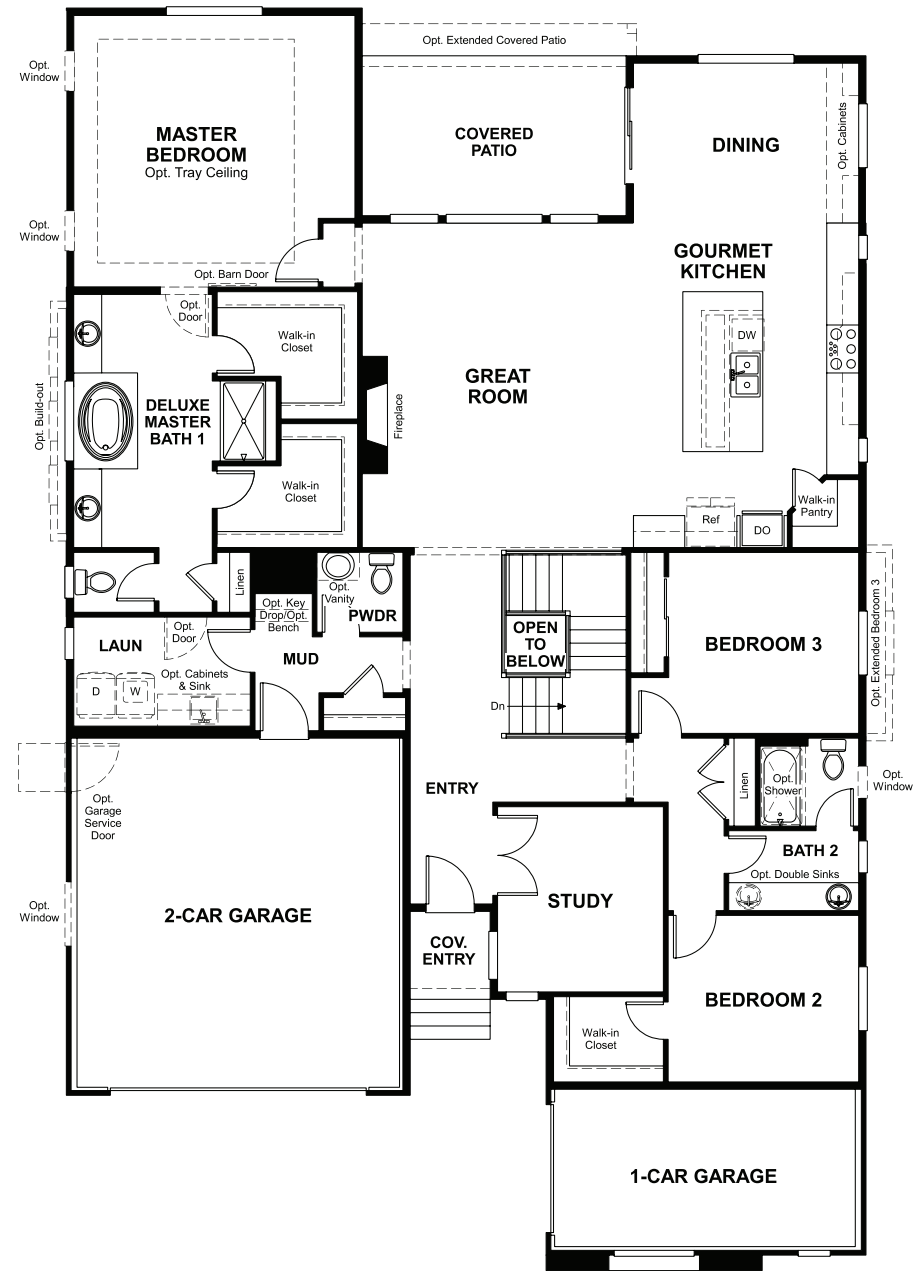
Denver Metro Home Gallery™ | 8000 East Belleview Avenue, Suite C-12 | Greenwood Village, CO 80111 | 888.402.4663



Floor plans and renderings are conceptual drawings and may vary from actual plans and homes as built. Options and features may not be available on all homes and are subject to change without notice. Actual homes may vary from photos and/or drawings which show upgraded landscaping and may not represent the lowest-priced homes in the community. Features may include optional upgrades and may not be available on all homes. Square footage numbers are approximate and are subject to change without notice. Prices, specifications and availability subject to change without notice. ©2020 Richmond American Homes, Richmond American Homes of Colorado, Inc. 9/21/2020

MAIN FLOOR

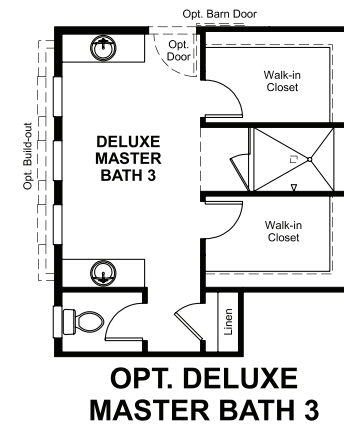
MAIN FLOOR OPTIONS



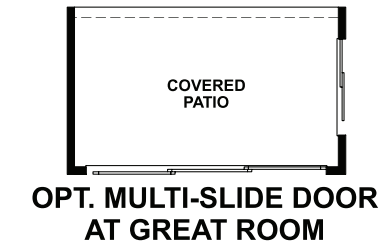
OPT. DELUXE MASTER BATH 2



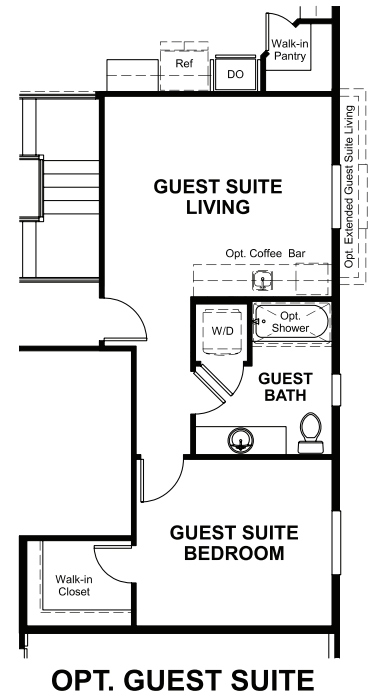
OPT. CENTER MEET DOOR AT GREAT ROOM



OPT. DELUXE MASTER BATH 3



OPT. MULTI-SLIDE DOOR AT GREAT ROOM



OPT. GUEST SUITE

Floor plans and renderings are conceptual drawings and may vary from actual plans and homes as built. Options and features may not be available on all homes and are subject to change without notice. Actual homes may vary from photos and/or drawings which show upgraded landscaping and may not represent the lowest-priced homes in the community. Features may include optional upgrades and may not be available on all homes. Square footage numbers are approximate and are subject to change without notice. Prices, specifications and availability subject to change without notice. ©2020 Richmond American Homes, Richmond American Homes of Colorado, Inc. 9/21/2020

Floor plans and renderings are conceptual drawings and may vary from actual plans and homes as built. Options and features may not be available on all homes and are subject to change without notice. Actual homes may vary from photos and/or drawings which show upgraded landscaping and may not represent the lowest-priced homes in the community. Features may include optional upgrades and may not be available on all homes. Square footage numbers are approximate and are subject to change without notice. Prices, specifications and availability subject to change without notice. ©2020 Richmond American Homes, Richmond American Homes of Colorado, Inc. 9/21/2020