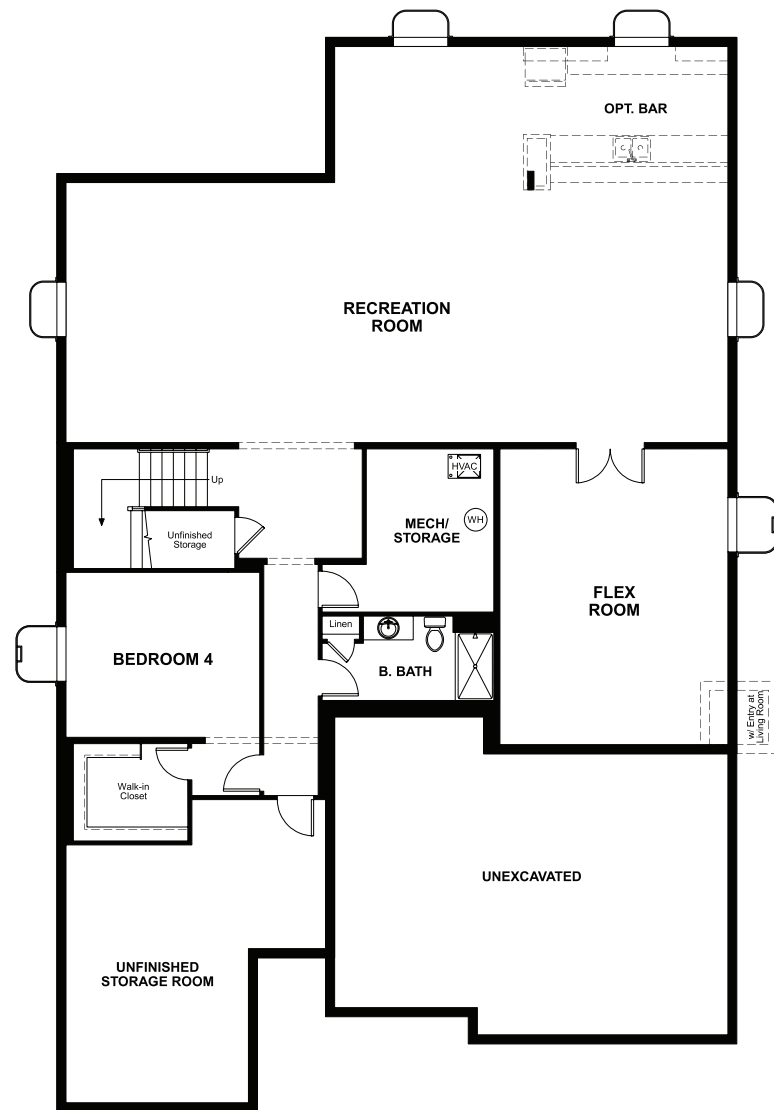
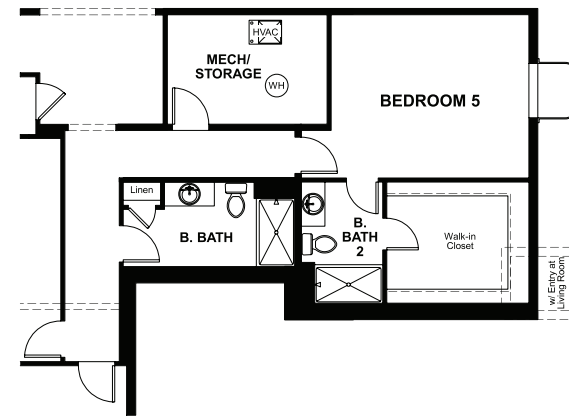


BASEMENT



OPT. FINISHED BASEMENT



OPT. BEDROOM 5 & B. BATH 2
 AT FINISHED BASEMENT



ELEVATION D

ABOUT THE NOTTINGHAM

Part of the Modern Living™ Collection, the Nottingham provides a sophisticated and accommodating ranch-style layout. In addition to a lavish master suite—with a roomy walk-in closet and attached double-sink bath—this home includes a second master suite with an adjacent living room, perfect for multi-generational living. For a more complete secondary residence, opt for a separate entrance to the living room on the side of the house, in addition to a kitchenette with a sink, refrigerator and cabinets. You'll also enjoy a 3-car garage, a study, a great room with an adjacent covered patio—featuring optional center-meet and multi-slide doors—and an inviting kitchen with a generous island, built-in pantry, dining nook and optional gourmet features. Additional options: formal dining room, master retreat, club room, deluxe master bath.



ELEVATION A



ELEVATION B



ELEVATION C

COMMUNITY LOCATION:

Ascent Village at Sterling Ranch | 9873 Eagle River Street | Littleton, CO 80125 | 303.850.5750

HOME GALLERY LOCATION:

Denver Metro Home Gallery™ | 8000 East Belleview Avenue, Suite C-12 | Greenwood Village, CO 80111 | 888.402.4663



Floor plans and renderings are conceptual drawings and may vary from actual plans and homes as built. Options and features may not be available on all homes and are subject to change without notice. Actual homes may vary from photos and/or drawings which show upgraded landscaping and may not represent the lowest-priced homes in the community. Features may include optional upgrades and may not be available on all homes. Square footage numbers are approximate and are subject to change without notice. Prices, specifications and availability subject to change without notice. ©2020 Richmond American Homes, Richmond American Homes of Colorado, Inc. 9/21/2020

