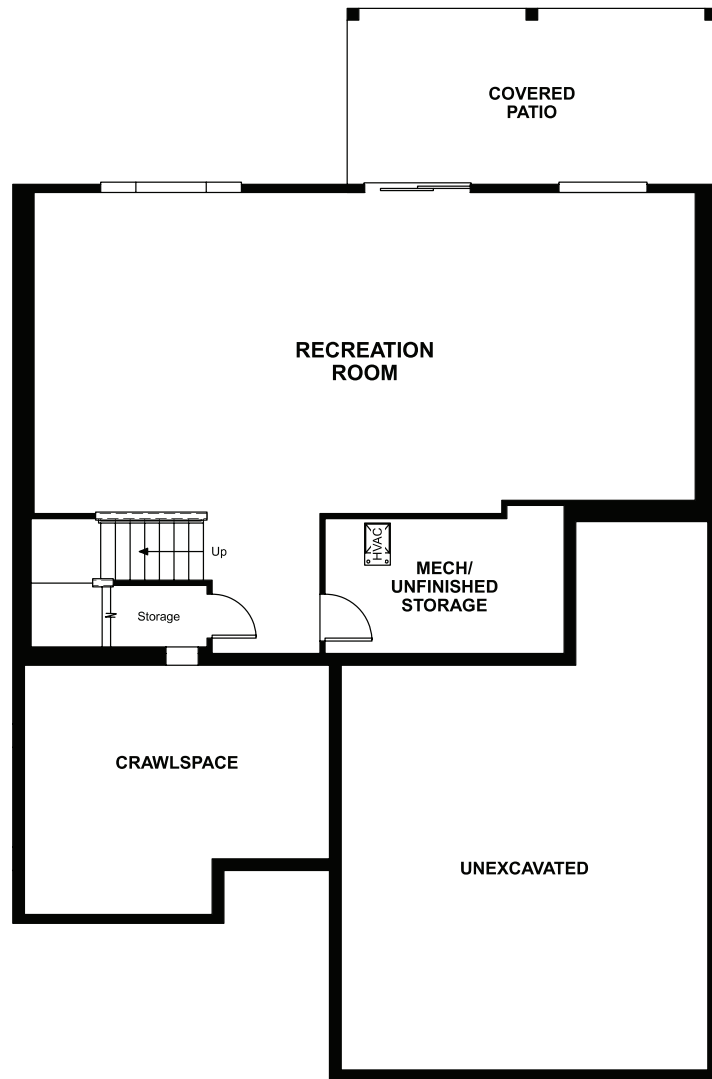
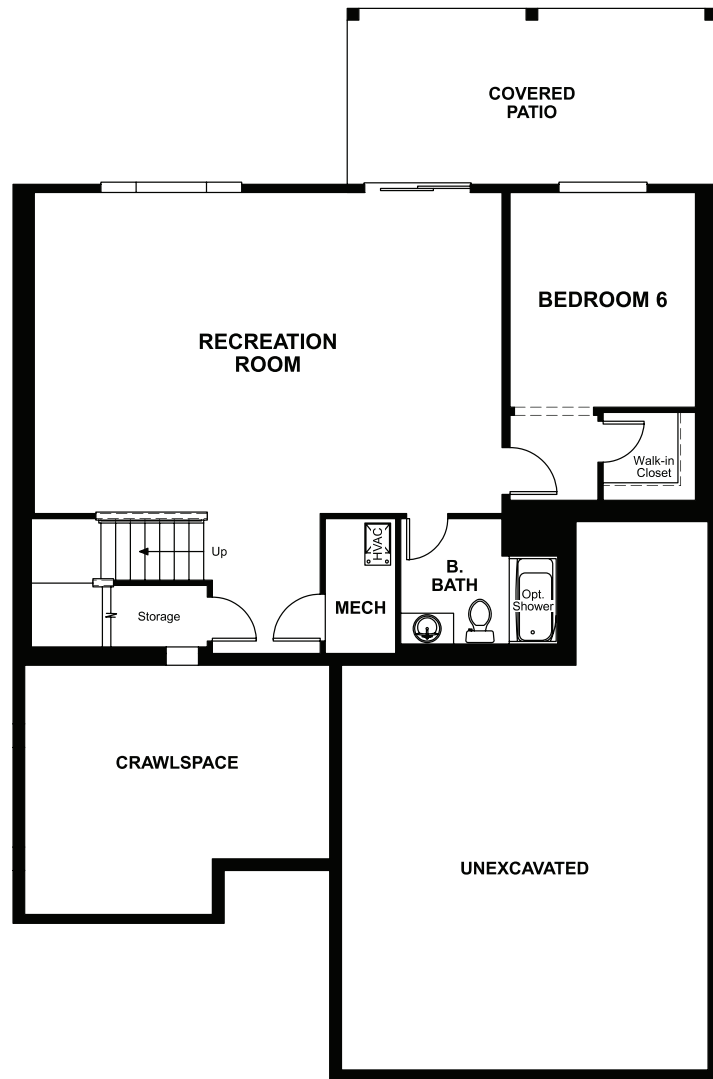


BASEMENT



OPT. WALK-OUT BASEMENT



OPT. WALK-OUT BASEMENT 2



ELEVATION C

ABOUT THE ALEXA

A covered front porch gives the must-see Alexa plan abundant curb appeal. On the main floor, you'll find a quiet study, an inviting great room and an impressive kitchen with a spacious center island, walk-in pantry and breakfast nook. Upstairs, enjoy a convenient laundry, four generous bedrooms, including an elegant master suite, and a loft that can be optioned as a fifth bedroom or bonus room. Also personalize this plan with a gourmet kitchen, deluxe master bath and more!



ELEVATION A



ELEVATION B

COMMUNITY LOCATION:

Scouters Mountain | 15117 Southeast Baden Powell Road | Happy Valley, OR 97086 | 503.966.6363

HOME GALLERY LOCATION:

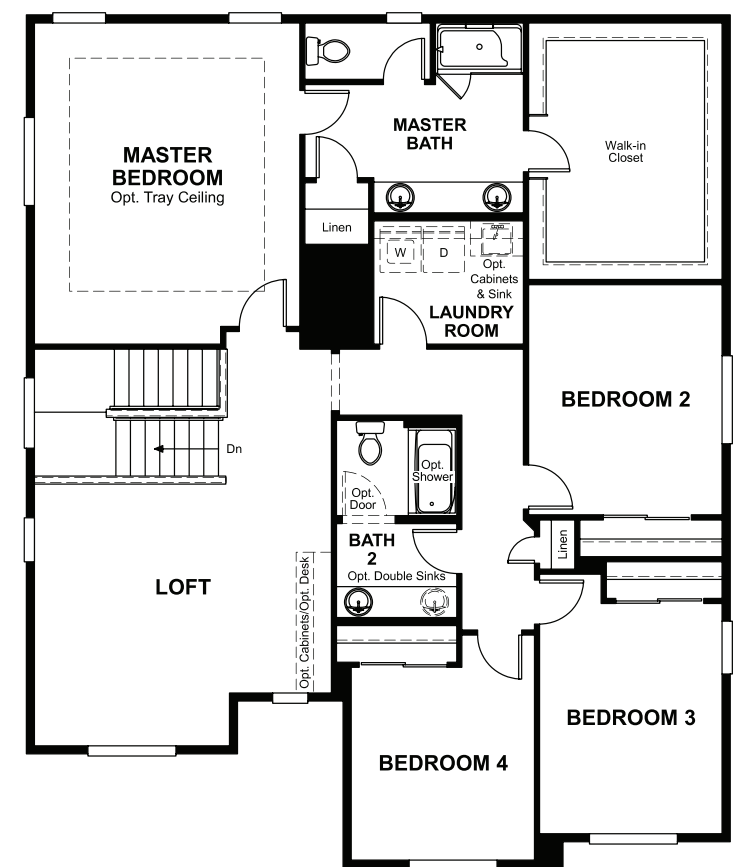
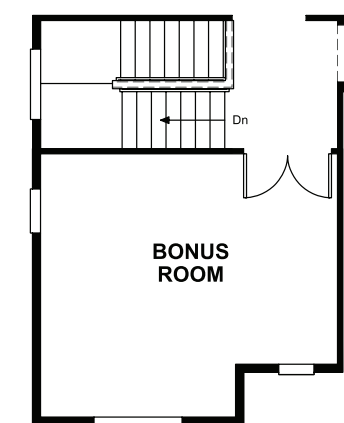
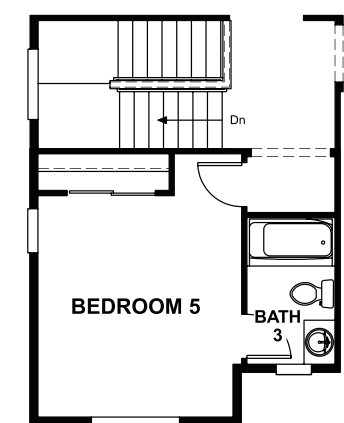
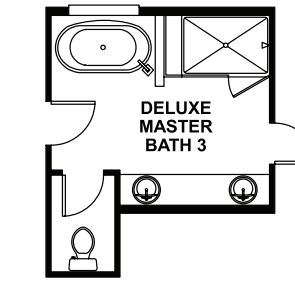
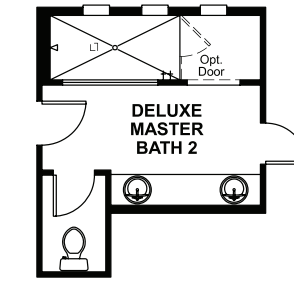
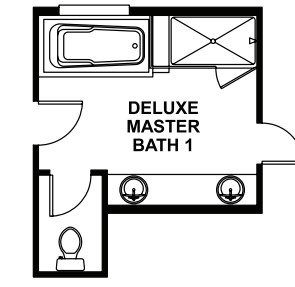
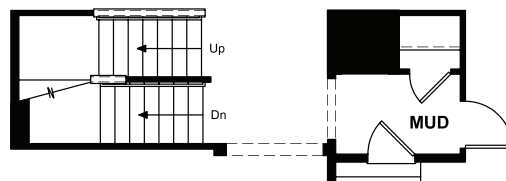
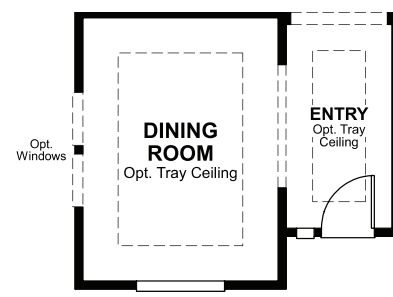
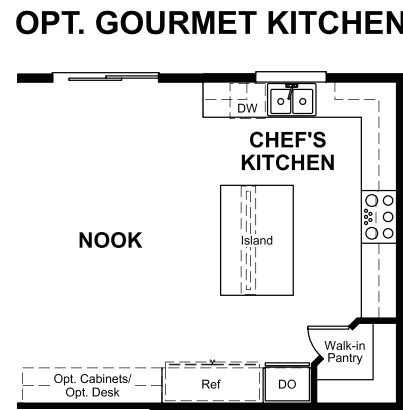
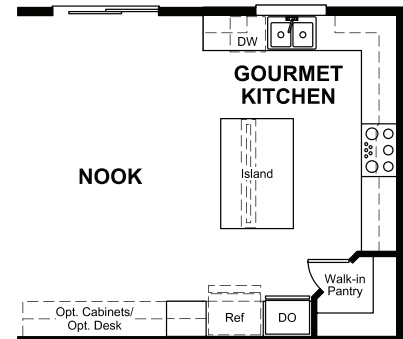
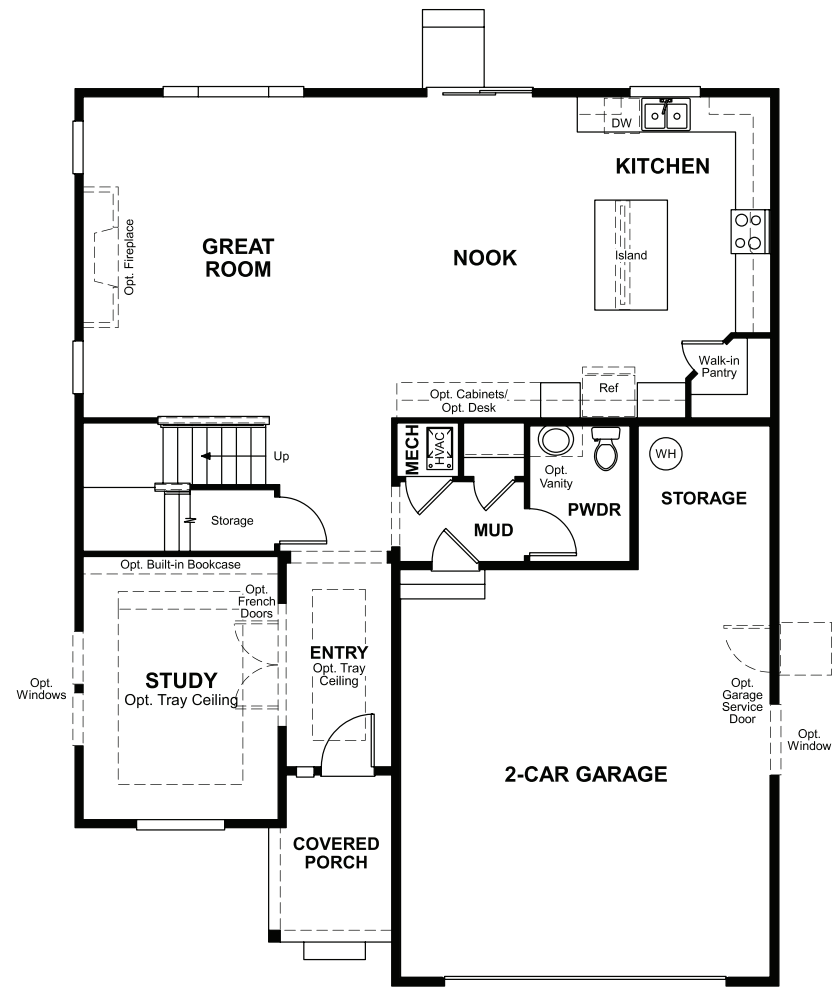
Oregon Home Gallery™ | 9899 Southwest 173rd Avenue | Beaverton, OR 97007 | 971.317.7520



Floor plans and renderings are conceptual drawings and may vary from actual plans and homes as built. Options and features may not be available on all homes and are subject to change without notice. Actual homes may vary from photos and/or drawings which show upgraded landscaping and may not represent the lowest-priced homes in the community. Features may include optional upgrades and may not be available on all homes. Square footage numbers are approximate and are subject to change without notice. Prices, specifications and availability subject to change without notice. ©2020 Richmond American Homes, Richmond American Homes of Oregon, Inc., CCB #218193. 9/14/2020

MAIN FLOOR

SECOND FLOOR



Floor plans and renderings are conceptual drawings and may vary from actual plans and homes as built. Options and features may not be available on all homes and are subject to change without notice. Actual homes may vary from photos and/or drawings which show upgraded landscaping and may not represent the lowest-priced homes in the community. Features may include optional upgrades and may not be available on all homes. Square footage numbers are approximate and are subject to change without notice. Prices, specifications and availability subject to change without notice. ©2020 Richmond American Homes, Richmond American Homes of Oregon, Inc., CCB #218193. 9/14/2020

Floor plans and renderings are conceptual drawings and may vary from actual plans and homes as built. Options and features may not be available on all homes and are subject to change without notice. Actual homes may vary from photos and/or drawings which show upgraded landscaping and may not represent the lowest-priced homes in the community. Features may include optional upgrades and may not be available on all homes. Square footage numbers are approximate and are subject to change without notice. Prices, specifications and availability subject to change without notice. ©2020 Richmond American Homes, Richmond American Homes of Oregon, Inc., CCB #218193. 9/14/2020