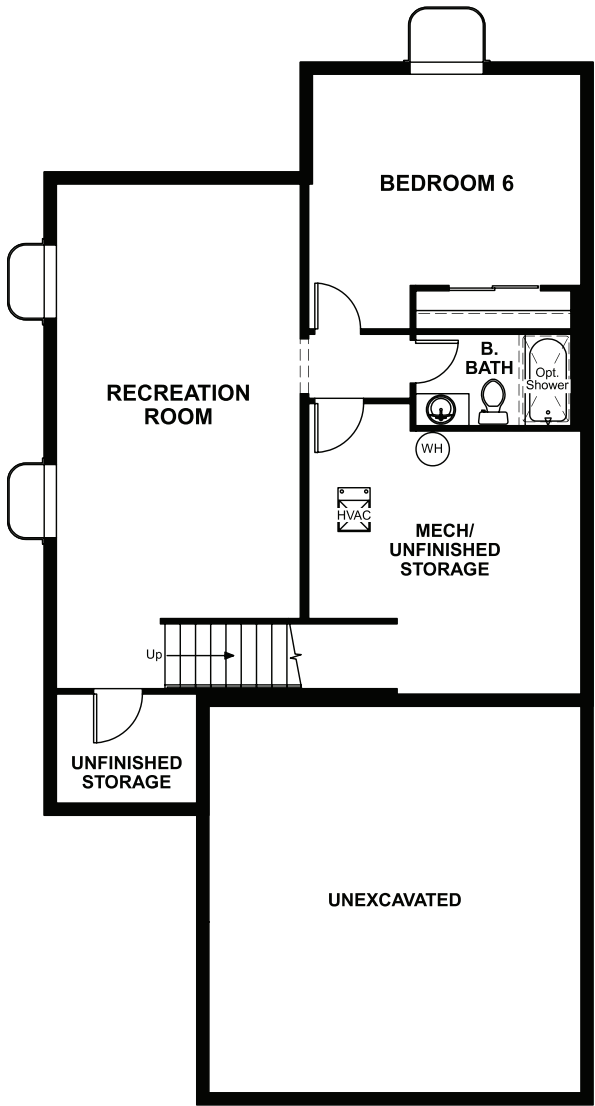


BASEMENT



OPT. FINISHED BASEMENT



ELEVATION D

ABOUT THE LAYLA

The versatile Layla floor plan offers two levels of thoughtfully designed living space. On the main floor, a two-story great room and dining area open onto an inviting kitchen with a large center island and optional gourmet features. Nearby, there's a private study and a powder room, which can be optioned as a full bath. Upstairs, you'll find three secondary bedrooms with a shared bath, and a lavish owner's suite boasting a private bath and immense walk-in closet. A convenient laundry rounds out the floor. Need extra space? Add a loft, an additional bedroom or an owner's retreat to fit your lifestyle.

COMMUNITY LOCATION:

Red Maple Ridge Neighborhood at Copperleaf | 4313 South Liverpool Court | Aurora, CO 80015 | **303.850.5750**

HOME GALLERY LOCATION:

Denver Metro Home Gallery™ | 8000 East Bellevue Avenue, Suite C-12 | Greenwood Village, CO 80111 | **888.402.4663**



Floor plans and renderings are conceptual drawings and may vary from actual plans and homes as built. Options and features may not be available on all homes and are subject to change without notice. Actual homes may vary from photos and/or drawings which show upgraded landscaping and may not represent the lowest-priced homes in the community. Features may include optional upgrades and may not be available on all homes. Square footage numbers are approximate and are subject to change without notice. Prices, specifications and availability subject to change without notice. ©2020 Richmond American Homes, Richmond American Homes of Colorado, Inc. 10/5/2020



ELEVATION A

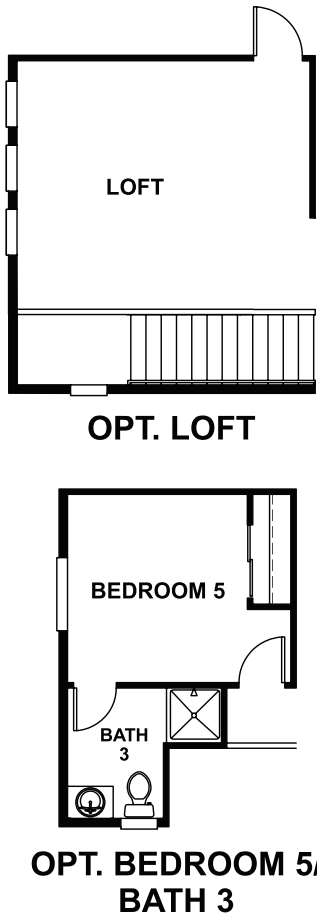
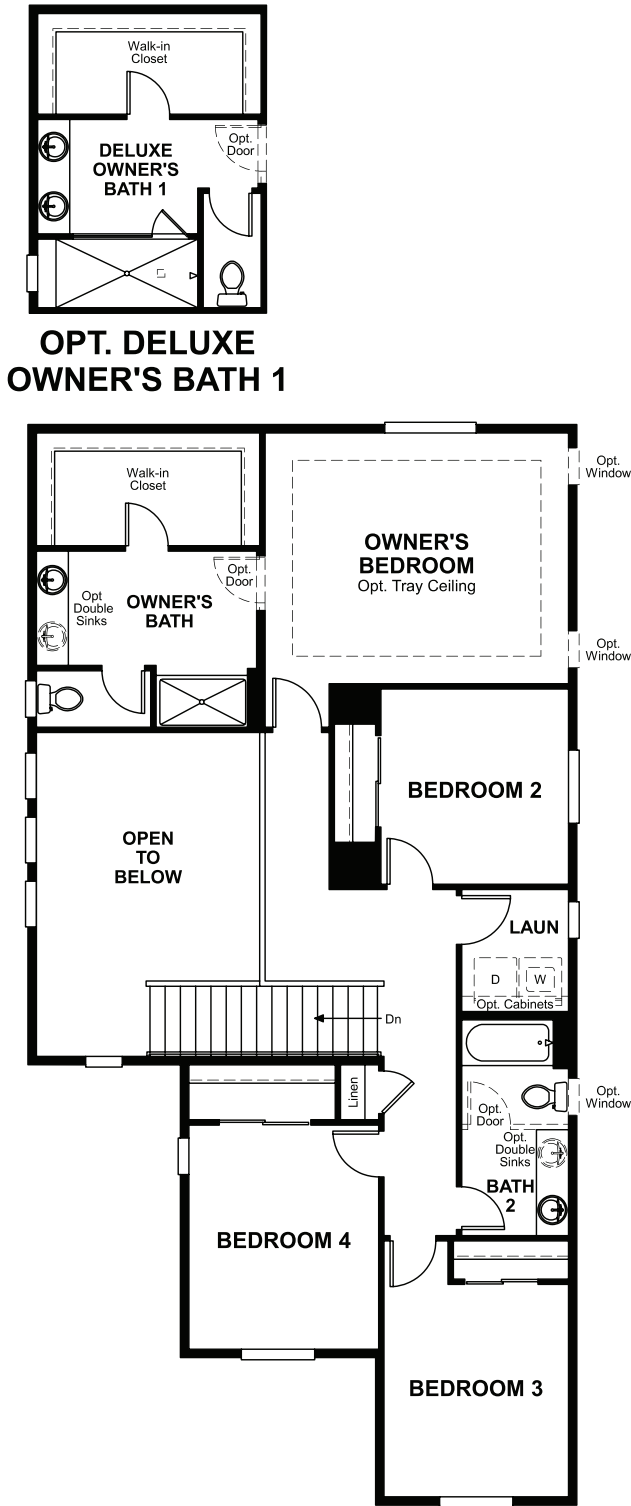
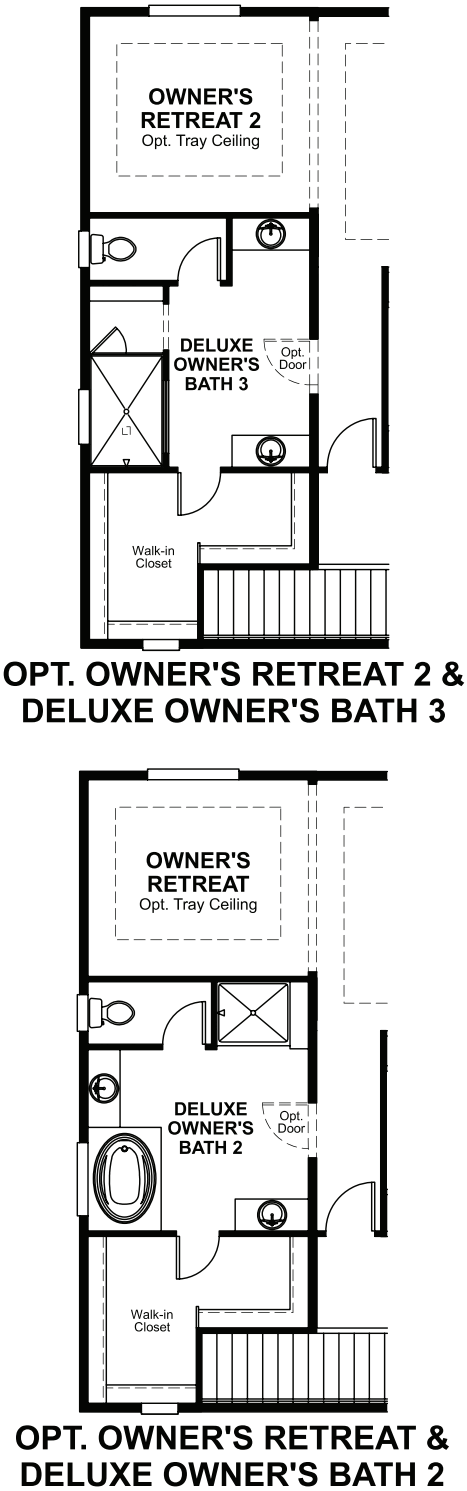
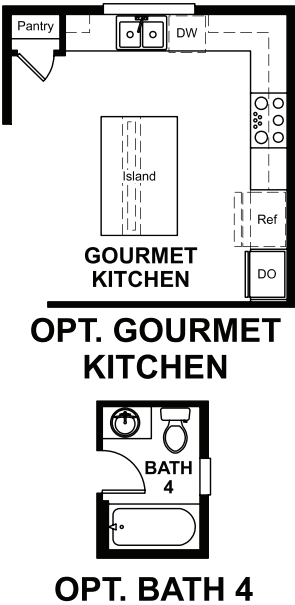
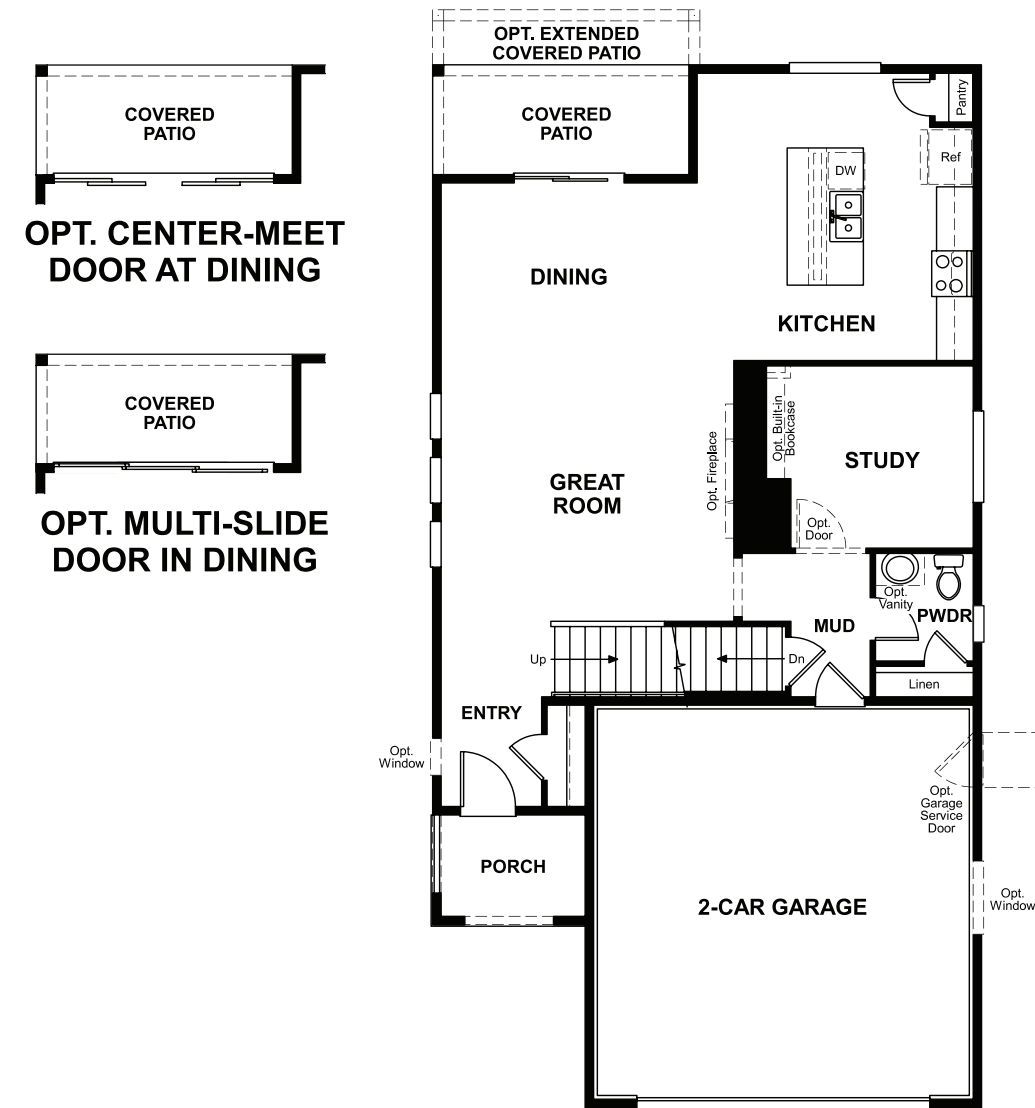


ELEVATION B



ELEVATION C

MAIN FLOOR



SECOND FLOOR

Floor plans and renderings are conceptual drawings and may vary from actual plans and homes as built. Options and features may not be available on all homes and are subject to change without notice. Actual homes may vary from photos and/or drawings which show upgraded landscaping and may not represent the lowest-priced homes in the community. Features may include optional upgrades and may not be available on all homes. Square footage numbers are approximate and are subject to change without notice. Prices, specifications and availability subject to change without notice. ©2020 Richmond American Homes, Richmond American Homes of Colorado, Inc. 10/5/2020

Floor plans and renderings are conceptual drawings and may vary from actual plans and homes as built. Options and features may not be available on all homes and are subject to change without notice. Actual homes may vary from photos and/or drawings which show upgraded landscaping and may not represent the lowest-priced homes in the community. Features may include optional upgrades and may not be available on all homes. Square footage numbers are approximate and are subject to change without notice. Prices, specifications and availability subject to change without notice. ©2020 Richmond American Homes, Richmond American Homes of Colorado, Inc. 10/5/2020