

TEHALEH
THE ARLINGTON

Approx. 1,950 sq. ft. | 1 story | 3-4 bedrooms | 2-car garage | Plan #W721



ELEVATION R

ABOUT THE ARLINGTON

Searching for a single-story plan that's perfect for entertaining? Add the Arlington to your list! This luxurious home offers an open layout with a spacious great room, a dining room and an impressive gourmet kitchen with a center island, a walk-in pantry and optional chef's features. A lavish owner's suite featuring a private bath and an oversized walk-in closet is separated from two additional bedrooms for privacy, and a study can be optioned as a fourth bedroom. Additional options include a covered patio.

COMMUNITY LOCATION:

Tehaleh | 12842 193rd Avenue East | Bonney Lake, WA 98391 | **253.693.4804**

HOME GALLERY LOCATION:

Washington Home Gallery™ | 20829 72nd Avenue South, Suite 115 | Kent, WA 98032 | **253.446.7277**

*This information is presented for education purposes only. The HERS index for a confirmed rating will be determined by a third-party HERS rater based on data gathered from on-site observations and, if required, testing of rated features for a home as featured, optioned, located, oriented and/or built.

+Standard new home is based on the RESNET® Reference Home definition with a HERS® index of 100 (based on the 2006 International Energy Conservation Code).

++Typical resale home is based on the U.S. Department of Energy definition with a HERS® index of 130.

^RESNET® has developed the HERS® index to indicate the comparative efficiencies of homes. It is no guarantee that energy efficiencies will be achieved.



Floor plans and renderings are conceptual drawings and may vary from actual plans and homes as built. Options and features may not be available on all homes and are subject to change without notice. Actual homes may vary from photos and/or drawings which show upgraded landscaping and may not represent the lowest-priced homes in the community. Features may include optional upgrades and may not be available on all homes. Square footage numbers are approximate and are subject to change without notice. Prices, specifications and availability subject to change without notice. ©2020 Richmond American Homes, Richmond American Homes of Washington, Inc. 11/03/2020



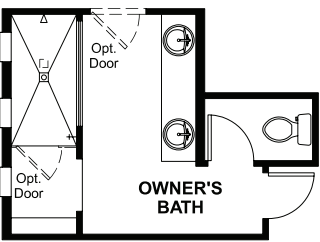
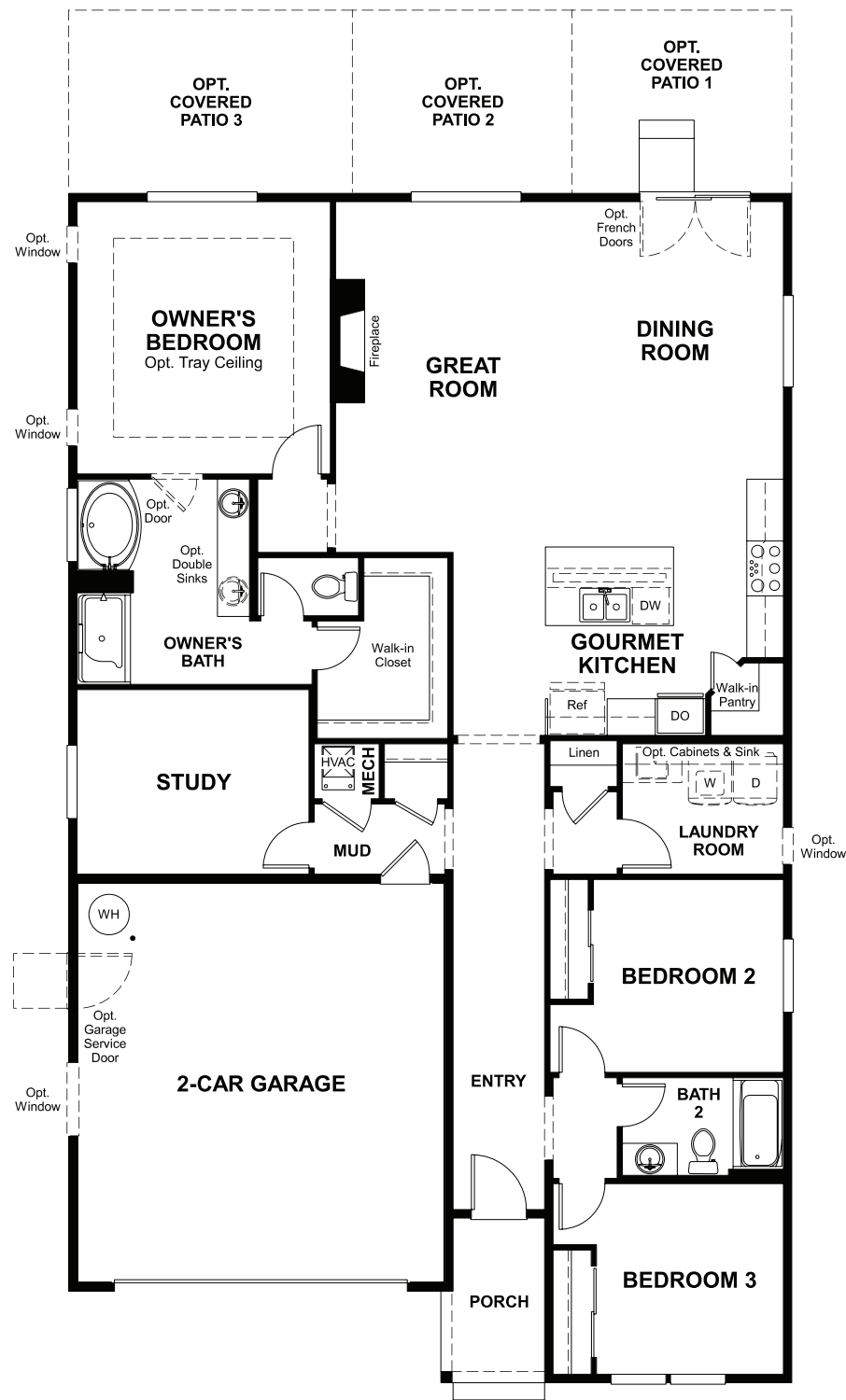
ELEVATION P



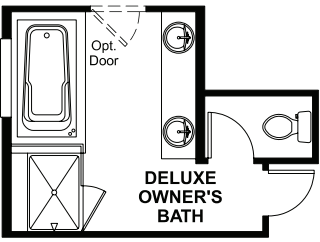
ELEVATION Q

MAIN FLOOR

MAIN FLOOR OPTIONS



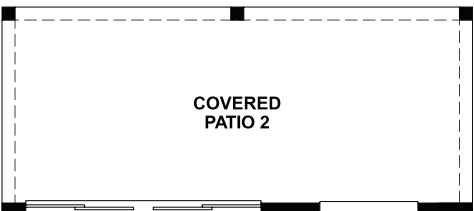
OPT. WALK-IN SHOWER



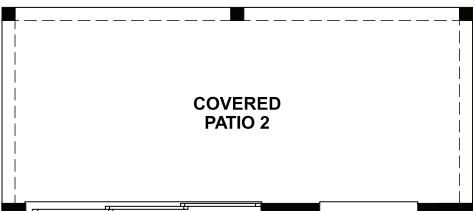
OPT. DELUXE OWNER'S BATH



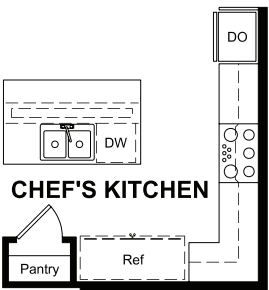
OPT. BED 4



OPT. CENTER-MEET DOORS



OPT. MULTI-SLIDE DOORS



OPT. CHEF'S KITCHEN

THIS PLAN'S PROJECTED
HERS® INDEX = 54*
Projected Rating Based on Plans – Field Confirmation required

How does this floor plan rate?
Take a look: **100** = Standard new home+ **130** = Typical resale Home++
The lower number, the better! Refer to the RESNET® HERS index brochure or go to www.RESNET.us and www.HERSindex.com

What's a HERS® Index? HERS stands for Home Energy Rating System, a system created by RESNET® to measure home energy efficiency.^
A Projected HERS index or rating is a computer simulation performed prior to construction by a third-party HERS rater using RESNET-accredited rating software, rated feature and specification data derived from home plans, features and specifications, and other data selected or assumed by the rater. The projected HERS index is approximate and is subject to change without notice. Actual results will vary.