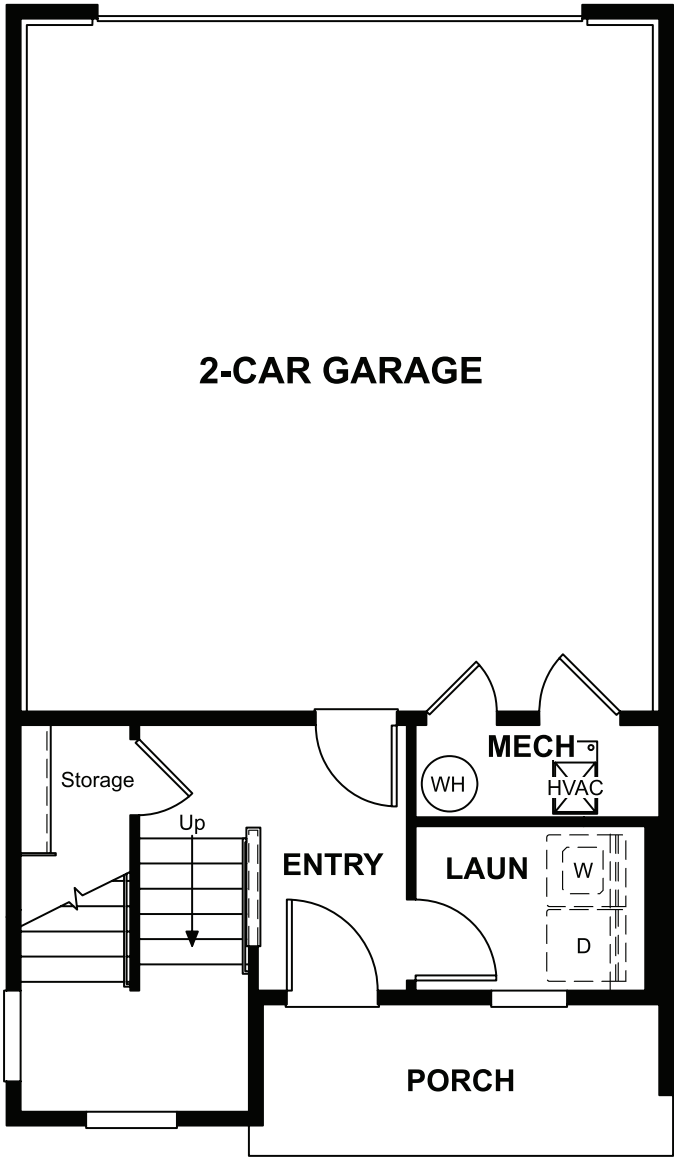


LOWER FLOOR



ELEVATION D

ABOUT THE GREENWICH

The standalone Greenwich plan is ideal for entertaining. Its open, inviting main floor includes a spacious kitchen with optional gourmet features, an adjacent dining area and an inviting living room with a private deck. Upstairs, you'll find relaxing primary suite with an optional deluxe bath. The convenient laundry is located on the lower floor, and the rooftop terrace offers additional space to enjoy.



ELEVATION C

COMMUNITY LOCATION:

Cityscape at Haskins Station | 5315 B Queen Court | Arvada, CO 80002 | **303.694.4788**

DESIGN CENTER LOCATION:

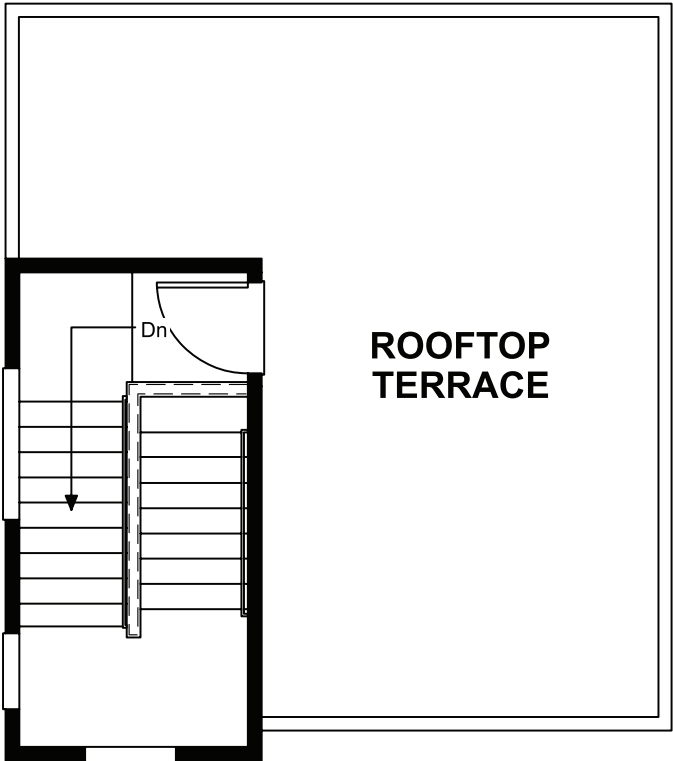
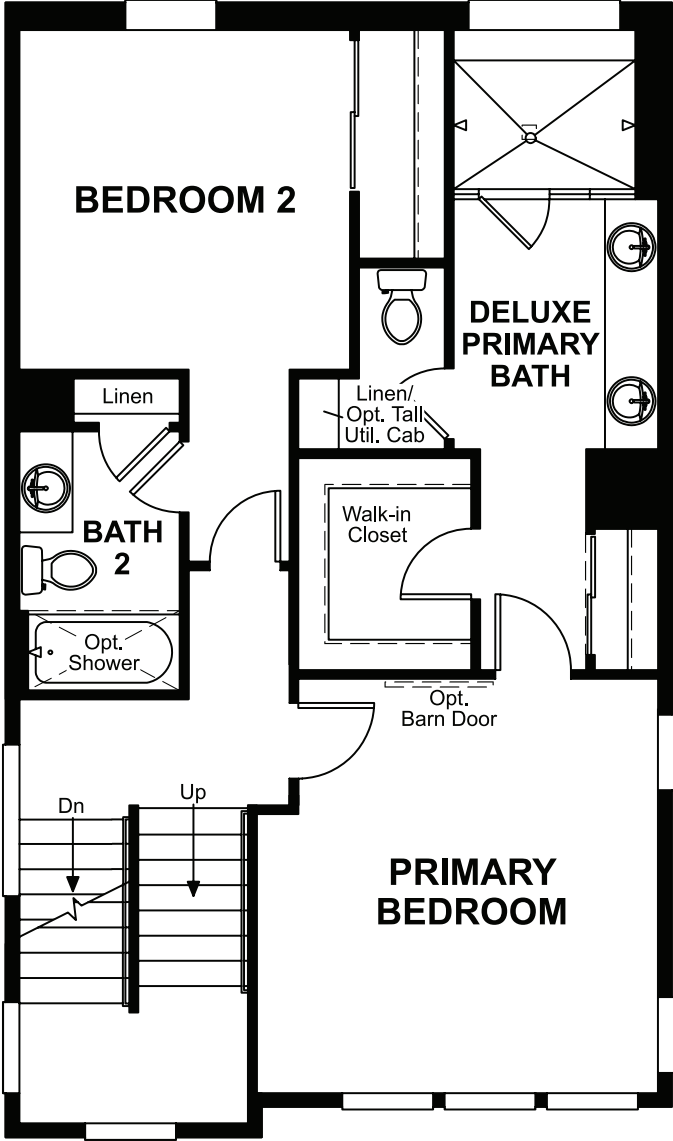
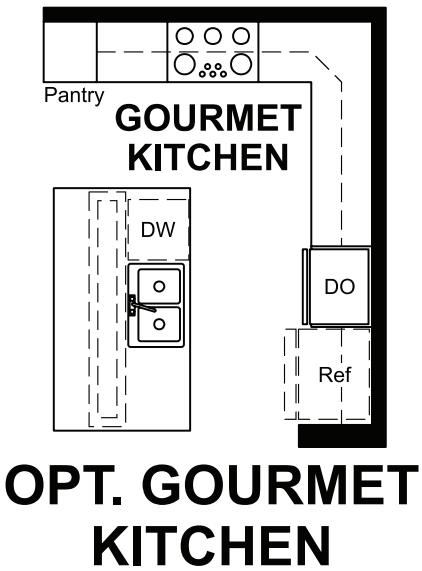
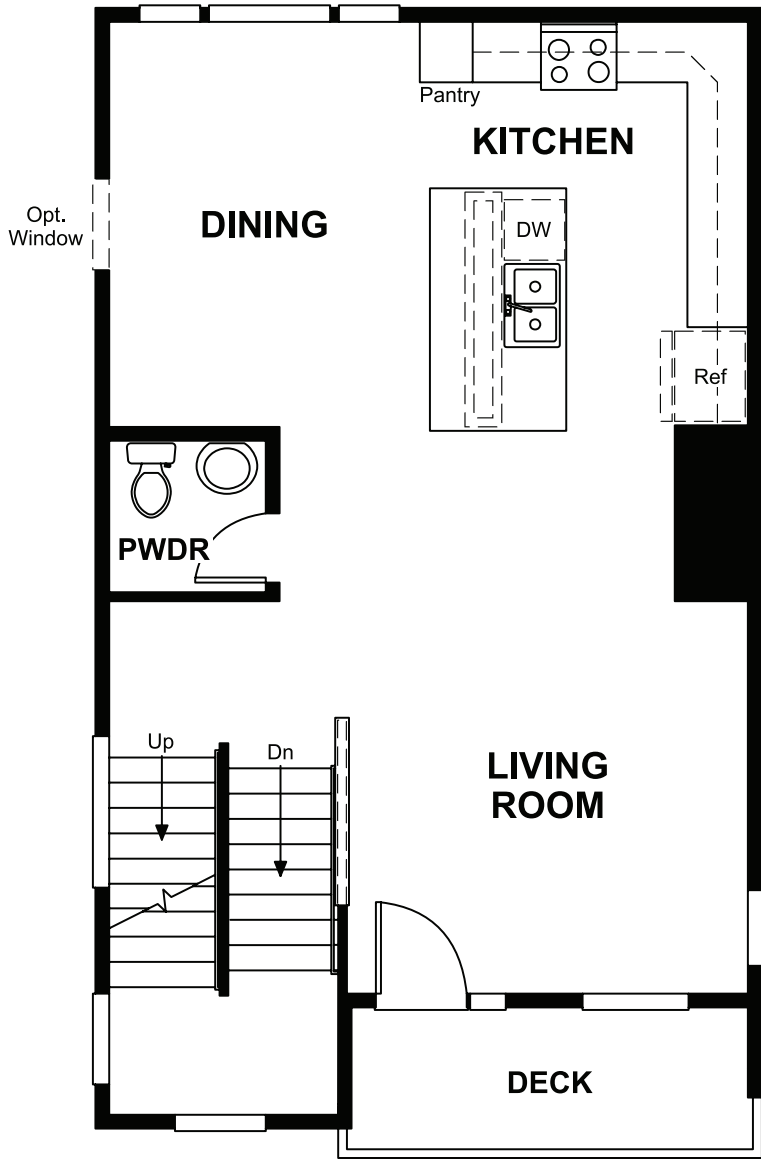
Denver Metro Home Gallery™ | 8000 E. Belview Avenue, Suite C-12 | Greenwood Village, CO 80111 | **888.402.4663**



Floor plans and renderings are conceptual drawings and may vary from actual plans and homes as built. Options and features may not be available on all homes and are subject to change without notice. Actual homes may vary from photos and/or drawings which show upgraded landscaping and may not represent the lowest-priced homes in the community. Features may include optional upgrades and may not be available on all homes. Prices, specifications and availability are subject to change without notice. Square footage is approximate and subject to change without notice. ©2023 Richmond American Homes, Richmond American Homes of Colorado, Inc. 9/20/2023

MAIN FLOOR

UPPER FLOOR



ROOFTOP TERRACE