



ELEVATION B

ABOUT THE EDEN

The Eden floor plan offers an open main-floor great room and a kitchen with convenient center island and built-in pantry, as well as a covered porch entry, under-stair storage and a powder room off the 2-car garage. Upstairs, you'll find the living quarters: two bedrooms, each with a walk-in closet and easy access to a shared bath at the back of the home, and a large owner's suite at the front, offering a private bath, dual walk-in closets and a outdoor deck overlooking the front. The third floor has a large bonus room with optional wet bar and a covered deck for additional outdoor entertaining. Gourmet kitchen features available!

CADENCE PARK  
At Great Park Neighborhoods

COMMUNITY LOCATION:

Caballetta at Cadence Park | I I I Frame | Irvine, CA 92618 | 949.734.4282

HOME GALLERY LOCATION:


Southern California Home Gallery™ | 5171 California Avenue, Suite 110 | Irvine, CA 92617 | 909.579.3288

\*This information is presented for education purposes only. The HERS index for a confirmed rating will be determined by a third-party HERS rater based on data gathered from on-site observations and, if required, testing of rated features for a home as featured, optioned, located, oriented and/or built.

+Standard new home is based on the RESNET® Reference Home definition with a HERS® index of 100 (based on the 2006 International Energy Conservation Code).

++Typical resale home is based on the U.S. Department of Energy definition with a HERS® index of 130.

^RESNET® has developed the HERS® index to indicate the comparative efficiencies of homes. It is no guarantee that energy efficiencies will be achieved.



Floor plans and renderings are conceptual drawings and may vary from actual plans and homes as built. Options and features may not be available on all homes and are subject to change without notice. Actual homes may vary from photos and/or drawings which show upgraded landscaping and may not represent the lowest-priced homes in the community. Features may include optional upgrades and may not be available on all homes. Square footage numbers are approximate and are subject to change without notice. ©2020 Richmond American Homes, Richmond American Homes of Maryland, Inc., California Department of Real Estate – Real Estate Broker, Corporation License Number 01842595. 10/20/2020

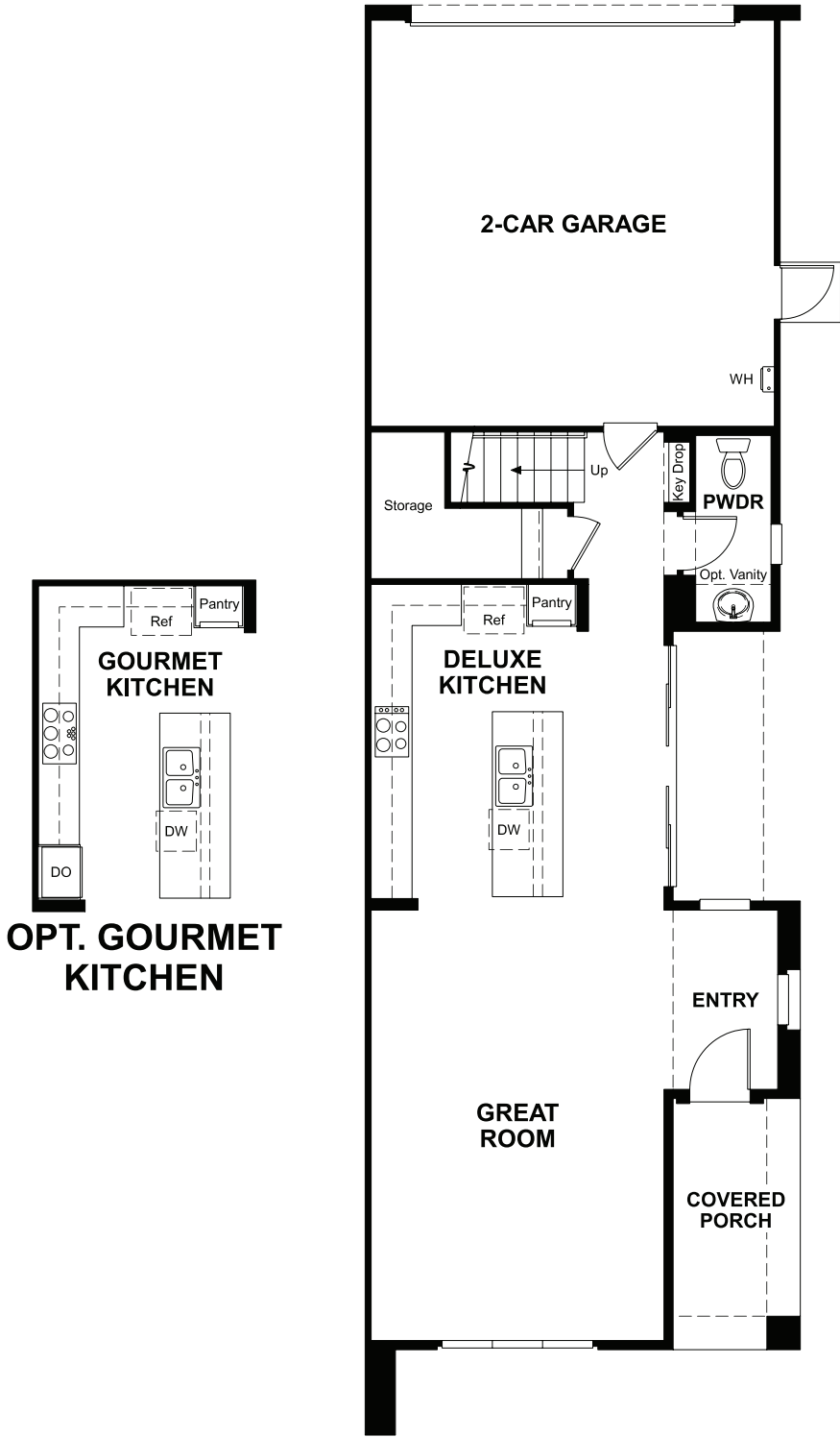


ELEVATION A

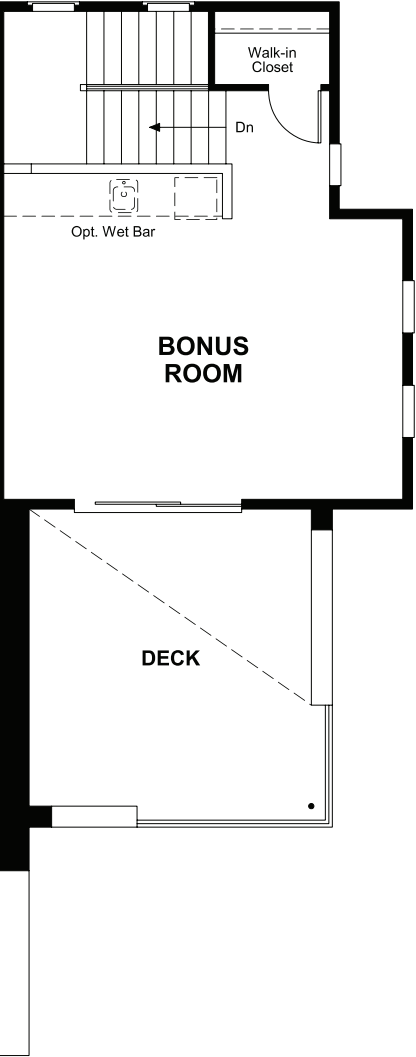
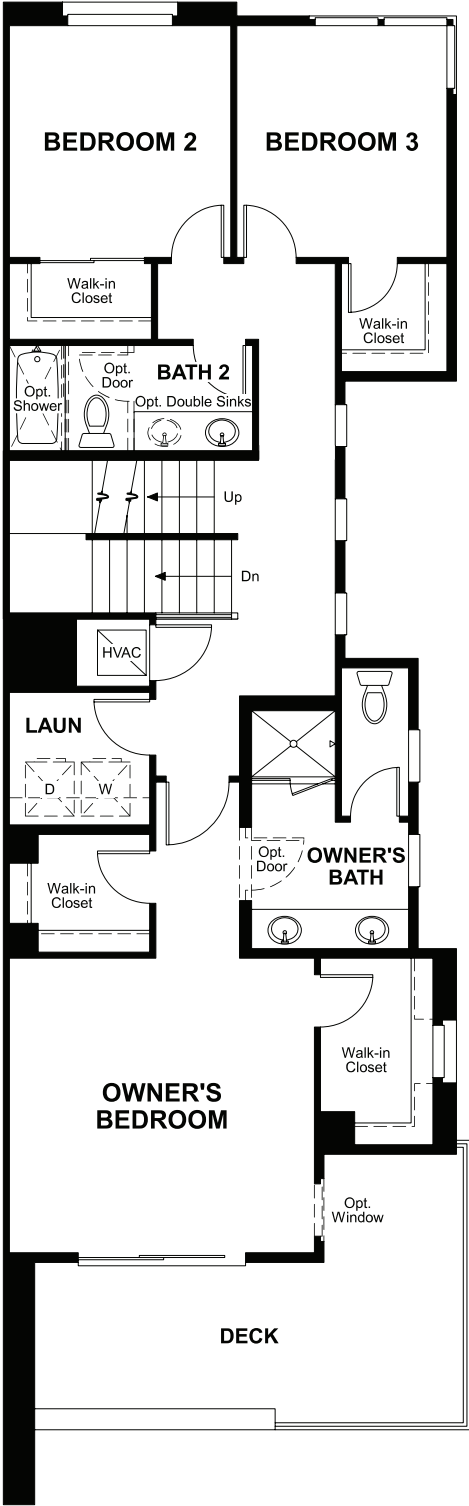


ELEVATION C

MAIN FLOOR



SECOND & THIRD FLOORS



THIS PLAN'S PROJECTED  
**HERS® INDEX = 60\***  
Projected Rating Based on Plans – Field Confirmation required

**How does this floor plan rate?**  
Take a look: **100** = Standard new home+ **130** = Typical resale Home++  
The lower number, the better! Refer to the RESNET® HERS index brochure or go to [www.RESNET.us](http://www.RESNET.us) and [www.HERSindex.com](http://www.HERSindex.com)

**What's a HERS® Index?** HERS stands for Home Energy Rating System, a system created by RESNET® to measure home energy efficiency.^  
A Projected HERS index or rating is a computer simulation performed prior to construction by a third-party HERS rater using RESNET-accredited rating software, rated feature and specification data derived from home plans, features and specifications, and other data selected or assumed by the rater. The projected HERS index is approximate and is subject to change without notice. Actual results will vary.