

THE SLATE

Approx. 2,070 sq. ft. | 1 story | 4 bedrooms | 3-car garage | Plan #J927



ELEVATION M

ABOUT THE SLATE

The thoughtfully designed Slate floor plan opens with two bedrooms flanking a bath. Further down the foyer, you'll find an open layout with a dining nook, a great room with access to the covered patio, and a kitchen with a center island. The owner's suite is adjacent, and offers a generous walk-in closet and a private bath with dual sinks, a shower and a separate soaking tub. A fourth bedroom and a laundry complete the home.

HOME GALLERY LOCATION:

Jacksonville Home Gallery™ | 10255 Fortune Parkway, Suite 150 | Jacksonville, FL 32256 | **904.541.2555**



Floor plans and renderings are conceptual drawings and may vary from actual plans and homes as built. Options and features may not be available on all homes and are subject to change without notice. Actual homes may vary from photos and/or drawings which show upgraded landscaping and may not represent the lowest-priced homes in the community. Features may include optional upgrades and may not be available on all homes. Square footage numbers are approximate and are subject to change without notice. Prices, specifications and availability subject to change without notice. ©2020 Richmond American Homes, Richmond American Homes of Florida, LP, CBC1257429 10/30/2020

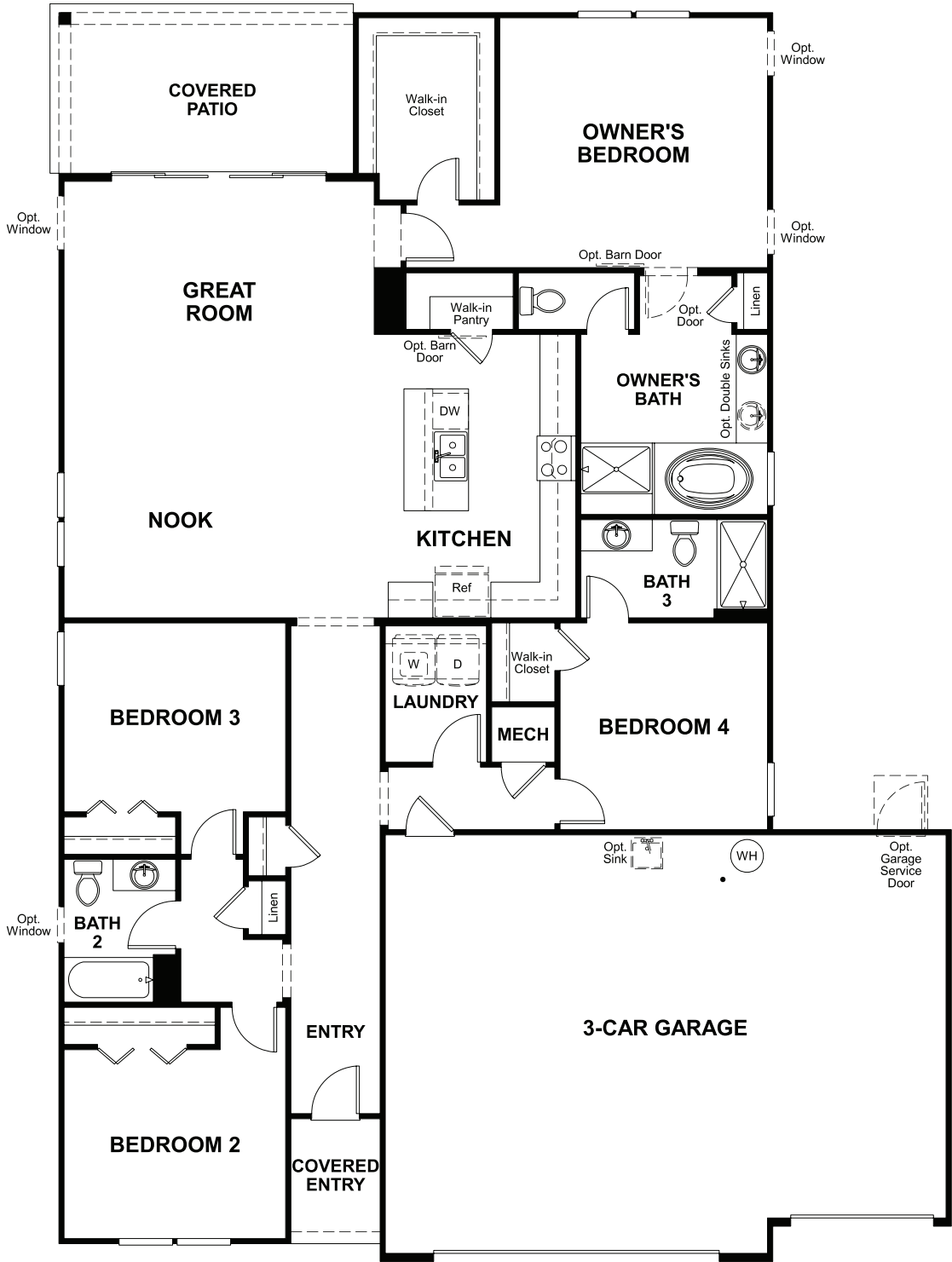


ELEVATION K



ELEVATION L

MAIN FLOOR



Floor plans and renderings are conceptual drawings and may vary from actual plans and homes as built. Options and features may not be available on all homes and are subject to change without notice. Actual homes may vary from photos and/or drawings which show upgraded landscaping and may not represent the lowest-priced homes in the community. Features may include optional upgrades and may not be available on all homes. Square footage numbers are approximate and are subject to change without notice. Prices, specifications and availability subject to change without notice. ©2020 Richmond American Homes, Richmond American Homes of Florida, LP, CBC1257429 10/30/2020

Floor plans and renderings are conceptual drawings and may vary from actual plans and homes as built. Options and features may not be available on all homes and are subject to change without notice. Actual homes may vary from photos and/or drawings which show upgraded landscaping and may not represent the lowest-priced homes in the community. Features may include optional upgrades and may not be available on all homes. Square footage numbers are approximate and are subject to change without notice. Prices, specifications and availability subject to change without notice. ©2020 Richmond American Homes, Richmond American Homes of Florida, LP, CBC1257429 10/30/2020