



ELEVATION C

ABOUT THE JULIA

The ranch-style Julia plan greets guests with a charming covered front porch. Once inside, an extended entry leads to an expansive kitchen with a center island, large walk-in pantry, breakfast nook and great room for entertaining. You'll also appreciate the flex room which can be turned into a tech center or pool bath and a formal dining room with adjacent covered courtyard off to the side of the home. This plan offers two additional bedrooms and a bath; for more space, choose another bedroom and bathroom in lieu of storage. Personalization options include gourmet features in the kitchen, center meet and multi-slide doors in the great room, multi slide and center meet door options and more!

COMMUNITY LOCATION:

Falcon Ridge | 12721 West Sierra Vista Drive | Glendale, AZ 85307 | **623.404.7262**

HOME GALLERY LOCATION:

Phoenix Home Gallery™ | 16427 North Scottsdale Road, Suite 175 | Scottsdale, AZ 85254 | **877.444.1485** **Select Opt. 3**

*This information is presented for education purposes only. The HERS index for a confirmed rating will be determined by a third-party HERS rater based on data gathered from on-site observations and, if required, testing of rated features for a home as featured, optioned, located, oriented and/or built.

+Standard new home is based on the RESNET® Reference Home definition with a HERS® index of 100 (based on the 2006 International Energy Conservation Code).

++Typical resale home is based on the U.S. Department of Energy definition with a HERS® index of 130.

^RESNET® has developed the HERS® index to indicate the comparative efficiencies of homes. It is no guarantee that energy efficiencies will be achieved.

Floor plans and renderings are conceptual drawings and may vary from actual plans and homes as built. Options and features may not be available on all homes and are subject to change without notice. Actual homes may vary from photos and/or drawings which show upgraded landscaping and may not represent the lowest-priced homes in the community. Features may include optional upgrades and may not be available on all homes. Square footage numbers are approximate and are subject to change without notice. ©2021 Richmond American Homes, Richmond American Homes of Arizona, Inc. (a public report is available on the state real estate department's website), Richmond American Construction, Inc. ROC #206612. 4/2/2021



ELEVATION A

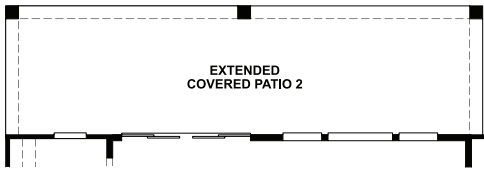


ELEVATION B - Shown with Optional Stone

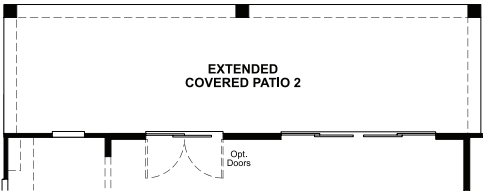
MAIN FLOOR



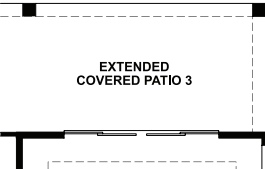
MAIN FLOOR OPTIONS



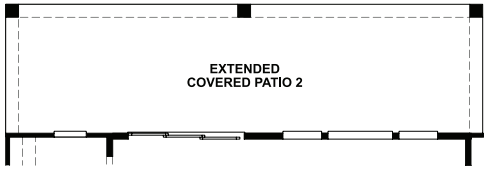
OPT. CENTER-MEET AT NOOK WITH OPT. PATIO #2



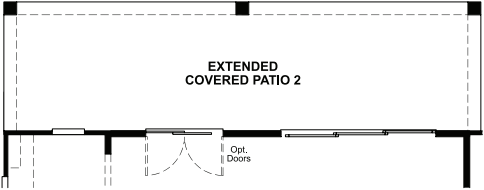
OPT. CENTER-MEET AT GREAT ROOM WITH OPT. PATIO #2



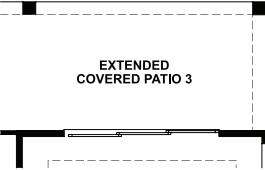
OPT. CENTER-MEET AT OWNER'S BEDROOM WITH OPT. PATIO #3



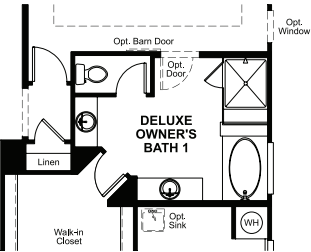
OPT. MULTI-SLIDE AT NOOK WITH OPT. PATIO #2



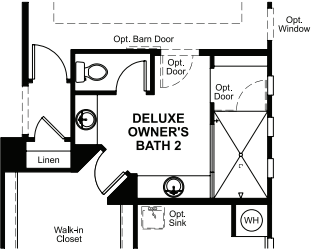
OPT. 3-PANEL MULTI-SLIDE DOORS AT GREAT ROOM WITH OPT. PATIO #2



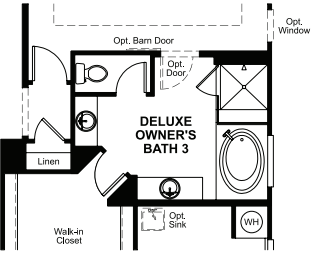
OPT. 3-PANEL MULTI-SLIDE DOORS AT OWNER'S BEDROOM WITH OPT. PATIO #3



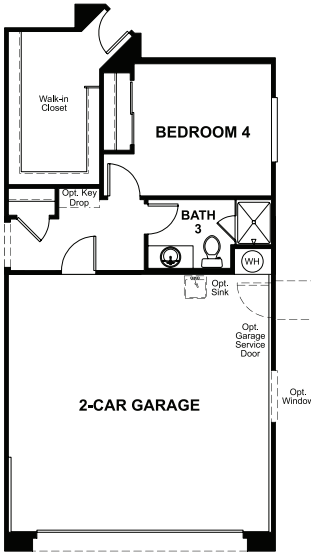
OPT. DELUXE OWNER'S BATH #1



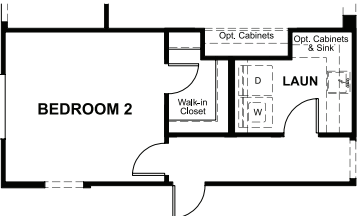
OPT. DELUXE OWNER'S BATH #2



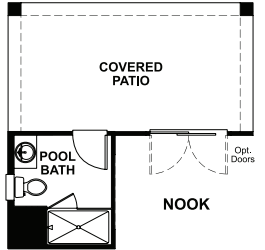
OPT. DELUXE OWNER'S BATH #3



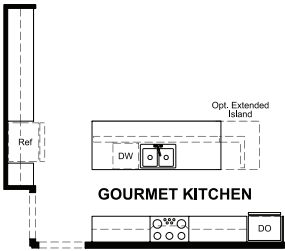
OPT. BEDROOM 4 W/ BATH 3



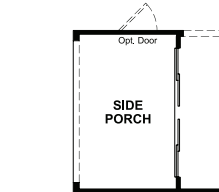
OPT. NICHE AT DINING ROOM



OPT. POOL BATH



OPT. GOURMET KITCHEN



OPT. 10' CENTER-MEET DOOR AT DINING ROOM

THIS PLAN'S PROJECTED
HERS® INDEX = 60*
Projected Rating Based on Plans – Field Confirmation required

How does this floor plan rate?
Take a look: **100** = Standard new home+ **130** = Typical resale Home++
The lower number, the better! Refer to the RESNET® HERS index brochure or go to www.RESNET.us and www.HERSindex.com

What's a HERS® Index? HERS stands for Home Energy Rating System, a system created by RESNET® to measure home energy efficiency.^\nA Projected HERS index or rating is a computer simulation performed prior to construction by a third-party HERS rater using RESNET-accredited rating software, rated feature and specification data derived from home plans, features and specifications, and other data selected or assumed by the rater. The projected HERS index is approximate and is subject to change without notice. Actual results will vary.