

THE JONQUIL

Approx. 1,320 sq. ft. | 2-3 bedrooms | 2 baths | 2-car garage | Plan #N925



ELEVATION C

ABOUT THE JONQUIL

Looking for a ranch-style new home? Consider the smartly designed Jonquil floor plan, which welcomes you with a covered entry. The inviting great room flows into a large, light-filled dining room and well-appointed kitchen boasting a roomy center island and walk-in pantry. The primary suite features a spacious walk-in closet and a lavish bathroom with optional double sinks. A second bedroom and bath are ideal for family and guests, and a third bedroom can be optioned as a study. A convenient laundry is also included. For even more personalization, add a covered patio!

COMMUNITY LOCATION:

Seasons at Stanford Crossing | 272 Pico Street | Lathrop, CA 95330 | **209.650.7026**

*This information is presented for education purposes only. The HERS index for a confirmed rating will be determined by a third-party HERS rater based on data gathered from on-site observations and, if required, testing of rated features for a home as featured, optioned, located, oriented and/or built.

+Standard new home is based on the RESNET® Reference Home definition with a HERS® index of 100 (based on the 2006 International Energy Conservation Code).

++Typical resale home is based on the U.S. Department of Energy definition with a HERS® index of 130.

^RESNET® has developed the HERS® index to indicate the comparative efficiencies of homes. It is no guarantee that energy efficiencies will be achieved.

Floor plans and renderings are conceptual drawings and may vary from actual plans and homes as built. Options and features may not be available on all homes and are subject to change without notice. Actual homes may vary from photos and/or drawings which show upgraded landscaping and may not represent the lowest-priced homes in the community. Features may include optional upgrades and may not be available on all homes. Square footage numbers are approximate and are subject to change without notice. Prices, specifications and availability subject to change without notice. ©2023 Richmond American Homes, Richmond American Homes of Maryland, Inc., California Department of Real Estate – Real Estate Broker, Corporation License Number 01842595. 12/10/2023



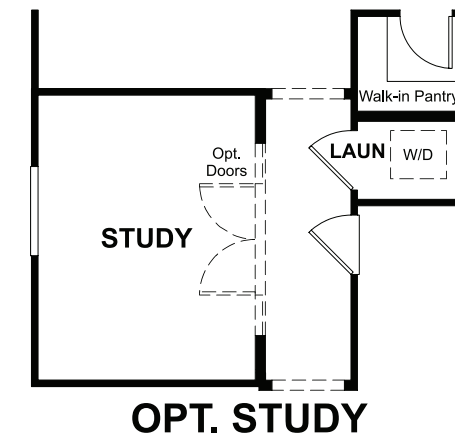
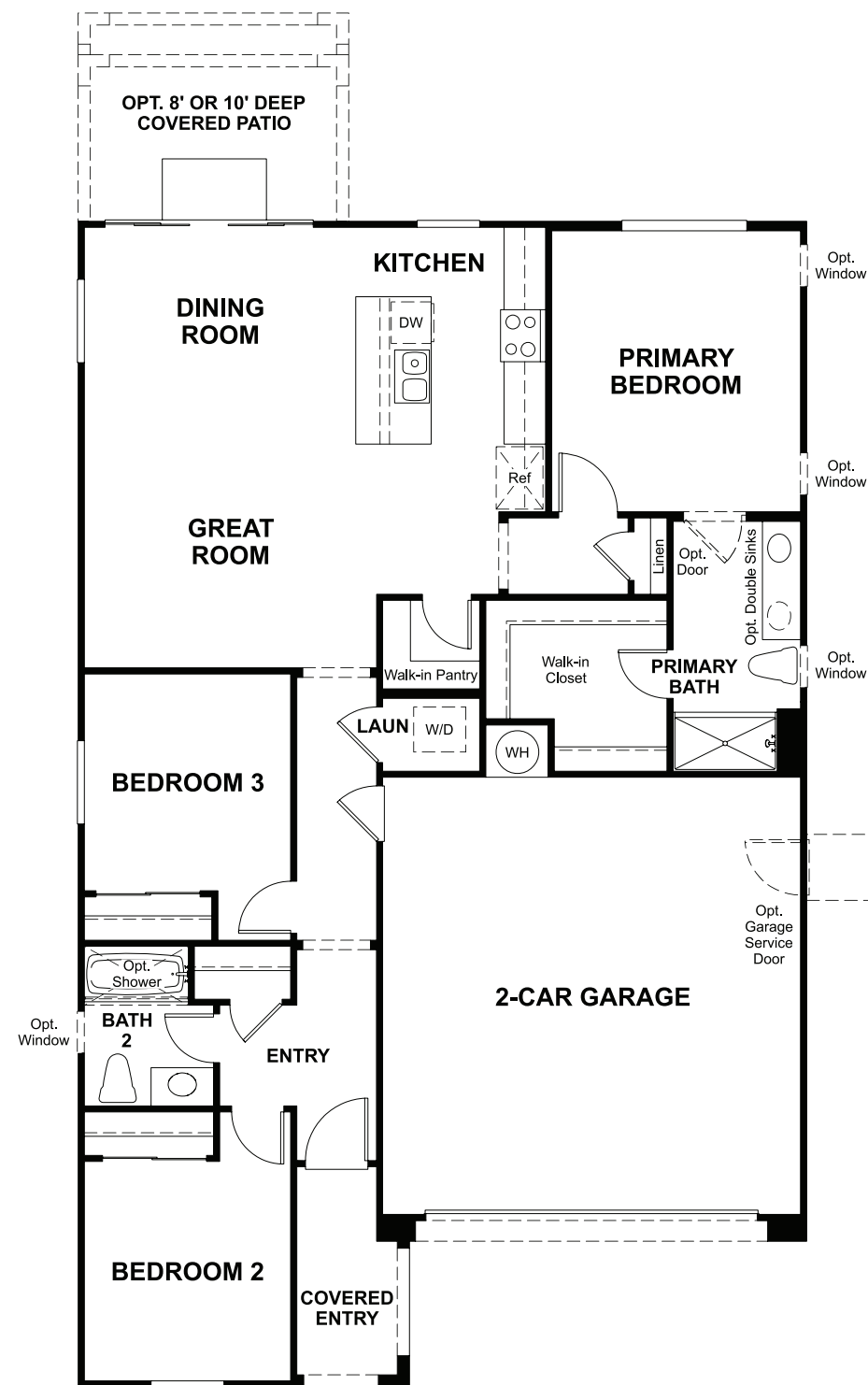
ELEVATION A



ELEVATION B

MAIN FLOOR
PRELIMINARY

MAIN-FLOOR OPTIONS
PRELIMINARY



THIS PLAN'S PROJECTED
HERS® INDEX = 25*
Projected rating based on plans – field confirmation required

How does this floor plan rate?
Take a look: **100** = standard new home™ **130** = typical resale home™
The lower the number, the better! Refer to the RESNET® HERS index brochure
or go to RESNET.us and HERSindex.com

What's a HERS® index? HERS stands for Home Energy Rating System, a system created by RESNET® to measure home energy efficiency. ^
A projected HERS index or rating is a computer simulation performed prior to construction by a third-party HERS rater using RESNET-accredited rating software, rated feature and specification data derived from home plans, features and specifications, and other data selected or assumed by the rater. The projected HERS index is approximate and is subject to change without notice. Actual results will vary.