

SEASONS AT RIVER OAKS
THE MOONSTONE

Approx. 2,630 sq. ft. | 4-6 bedrooms | 2.5 baths | 2-car garage | Plan #N914



ELEVATION C

ABOUT THE MOONSTONE

Discover sky-high style with the stellar Moonstone plan! At the heart of the home, an open layout showcases an airy great room and a spacious kitchen, complete with a center island and a walk-in pantry. Want more space for entertaining? Opt for a covered patio off the nearby dining room. A study and a powder room complete the main floor, and can be personalized as a fifth bedroom and a full bath. There are four bedrooms upstairs, including an elegant owner’s suite with a private bath and an oversized walk-in closet. A laundry and a versatile loft space that can be optioned as a sixth bedroom round out the floor. Personalization options also include an alternate kitchen layout, an extended covered patio and additional windows throughout the home.

COMMUNITY LOCATION:

Seasons at River Oaks | 893 Pine Creek Place | Plumas Lake, CA 95961 | **916.581.7001**

HOME GALLERY LOCATION:

Northern California Home Gallery™ | One Harbor Center, Suite 150 | Suisun City, CA 94585 | **707.416.2800**

*This information is presented for education purposes only. The HERS index for a confirmed rating will be determined by a third-party HERS rater based on data gathered from on-site observations and, if required, testing of rated features for a home as featured, optioned, located, oriented and/or built.

+Standard new home is based on the RESNET® Reference Home definition with a HERS® index of 100 (based on the 2006 International Energy Conservation Code).

++Typical resale home is based on the U.S. Department of Energy definition with a HERS® index of 130.

^RESNET® has developed the HERS® index to indicate the comparative efficiencies of homes. It is no guarantee that energy efficiencies will be achieved.

Floor plans and renderings are conceptual drawings and may vary from actual plans and homes as built. Options and features may not be available on all homes and are subject to change without notice. Actual homes may vary from photos and/or drawings which show upgraded landscaping and may not represent the lowest-priced homes in the community. Features may include optional upgrades and may not be available on all homes. Square footage numbers are approximate and are subject to change without notice. ©2021 Richmond American Homes, Richmond American Homes of Maryland, Inc., California Department of Real Estate – Real Estate Broker, Corporation License Number 01842595. 4/1/2021

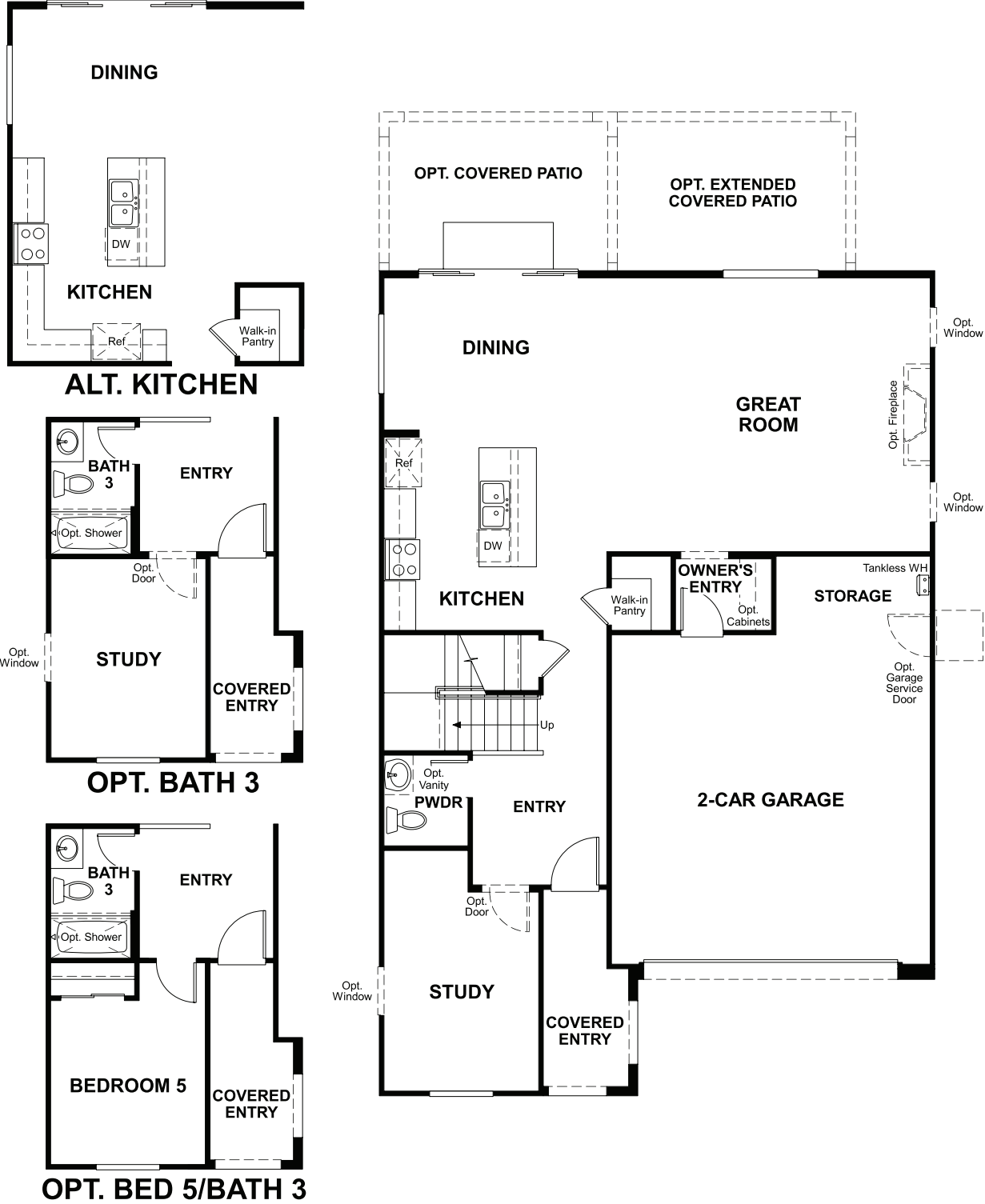


ELEVATION A

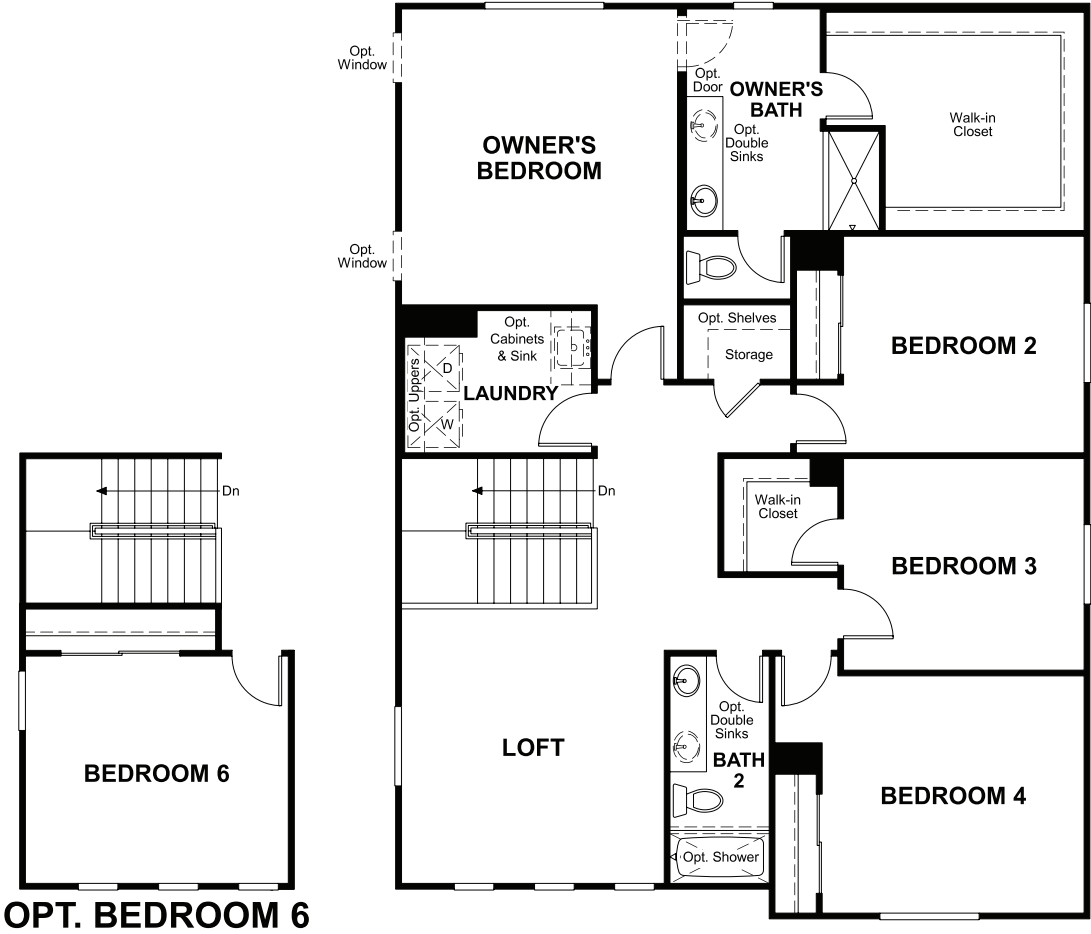


ELEVATION B

MAIN FLOOR
PRELIMINARY



SECOND FLOOR
PRELIMINARY



THIS PLAN'S PROJECTED
HERS® INDEX = 22*
Projected Rating Based on Plans – Field Confirmation required

How does this floor plan rate?
Take a look: **100** = Standard new home+ **130** = Typical resale Home++
The lower number, the better! Refer to the RESNET® HERS index brochure or go to www.RESNET.us and www.HERSindex.com

What's a HERS® Index? HERS stands for Home Energy Rating System, a system created by RESNET® to measure home energy efficiency.^
A Projected HERS index or rating is a computer simulation performed prior to construction by a third-party HERS rater using RESNET-accredited rating software, rated feature and specification data derived from home plans, features and specifications, and other data selected or assumed by the rater. The projected HERS index is approximate and is subject to change without notice. Actual results will vary.